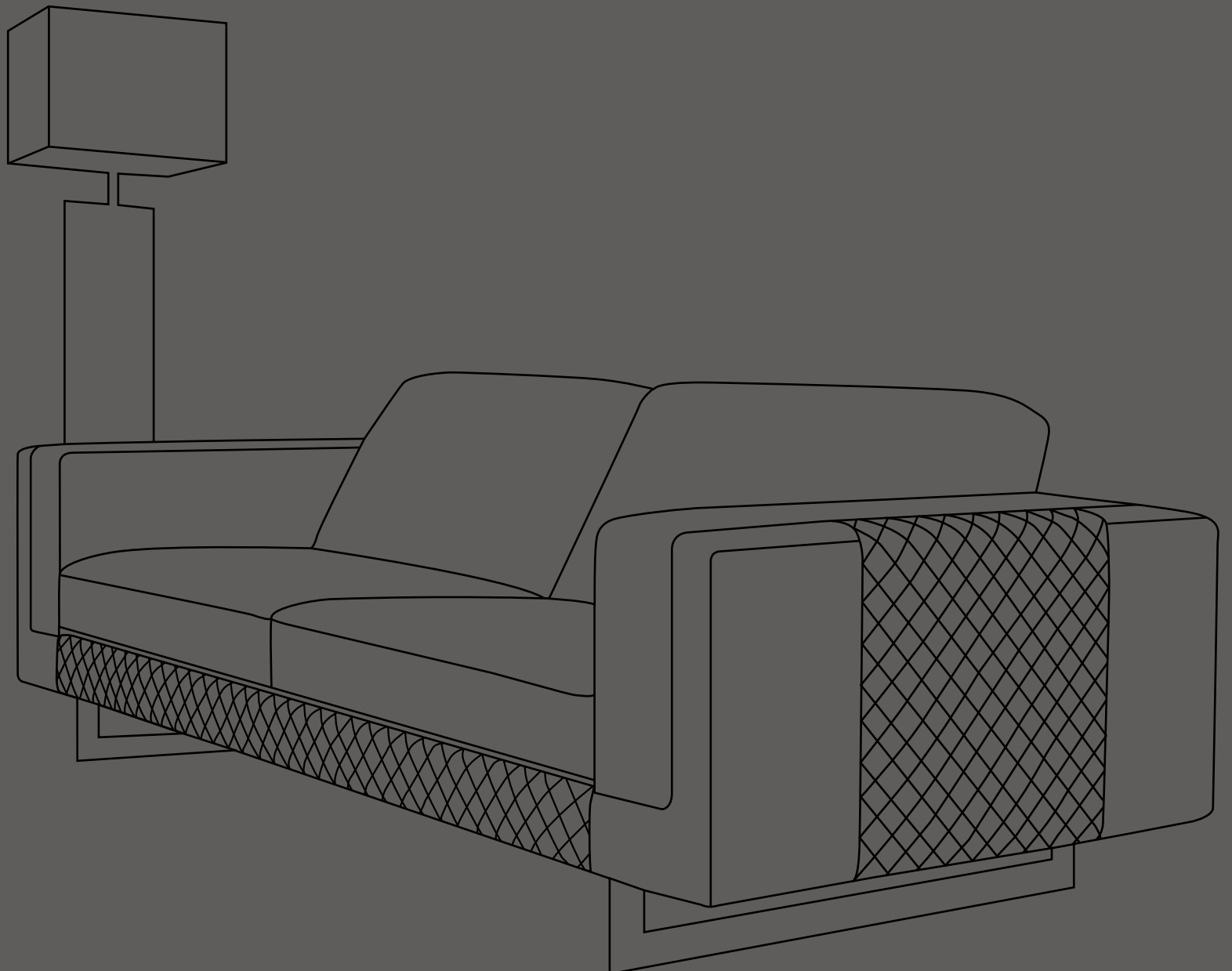




KELVIN GIORMANI

Luxury Sofas



KELVIN GIORMANI Modern Sofas with Showy Details Spring 2011 Collection

Modern Sofas with Showy Details

KELVIN GIORMANI
Luxury Sofas



4RABM



SXLBM

ARSIZIO 0233



There are two options of the back cushion style. Cushion Style A offers firmer support at the back which also enhances the consistency of the cushion appearance after years of sitting.

ARSIZIO I 0233A



Appearances of Cushion Style A after the back mechanisms are flipped up.

ARSIZIO I 0233A



Cushion Style B is a lighter & softer version, and the cushion is primarily filled with feather inside. It delivers extra comfort and easy appearance of the cushions.

ARSIZIO II 0233B



Appearances of Cushion Style B after the back mechanisms are flipped up.

ARSIZIO II 0233B





Model ARSIZIO has a unique kind of beauty when it is viewed from the top.



The optional stool (no. ST2) always comes with matching sofa legs.



ARSIZIO II 0233B

The solid stainless steel that supports the sofa arm frames well matches the chromed metal back frames of the back mechanisms. The clean-and-stylish solid stainless leg is perfectly in line with the modern and minimal design concept of the sofa main body.



07



The concept of Model ARSIZIO is to achieve a new "low" level of European contemporary low-back sofa design.



The optional headrest (no. HR) delivers extra support for your head. When it is not used, the headrest can be inserted at the side or the back of the sofa frames.





ARSIZIO 0233



The transparent feature of the sofa back frames is appreciated even when Model ARSIZIO is looked from the back side of the sofa set. It's a perfect choice for placing in the center of a large living room with an open interior design concept.



ARSIZIO II 0233B



The placement of back cushion belongs to a free-style concept. It is arbitrary and is a form of beauty. To personalize the back comfort, you shall feel free to move around the back cushions in the front of the back frames.

The introduced composition includes the Large-chaise (no. LXLBM or LXRBM) as shown on photos. It has three independent back mechanisms which deliver back support at 2 different sitting orientations. It can seat at least one more person comfortably comparing with the smaller chaises (no. SXLBM or SXRBM; JXLBM or JXRBM) can do.



The German-made back mechanisms allow various locking positions for different sitting angle requirement.



ARSIZIO II 0233B



Thanks to the German-made back mechanisms, the entire back frames can be moved from the perfect flat level to almost 90 degree which gives a nice pitch for comfortable sitting. This particular mechanism also enables a more transparent design feature for Model ARSIZIO.





KELVIN GIORMANI
Luxury Sofas



4RA



SXL

ELANA II M0235B



Besides metal legs, a wooden leg style is provided as an option. The corresponding model name is ELANA III (H0235).



The optional stool (no. ST2) always comes with matching sofa legs and a woven base frame.

Woven effect is always a wonderful way to present the beauty of genuine leather and the high-level leather craftsmanship. Every leather strip is wrapped by skillful hands. The weaving process is also done manually which makes every sofa of Model ELANA a unique artwork accomplished by hands like those of artists.

The woven effect is particularly designed to place in between regularly upholstered leather pieces from the sofa-arm side to seat-front frame. Its a good balance between over-exposure and lack-of-character.



ELANA II M0235B



ELANA II M0235B



There are 2 options of metal legs. The Metal Leg Style B has a special cross-shape which matches perfectly with the cross-woven effect on the sofa main body. Its unique and elegant.

The optional headrest (no. HR4) delivers extra support for your head.



ELANA I M0235A



To add some luxury flares to the woven effect, you can choose to have Model ELANA being made with MARCO (full grain aniline leather with silky gloss).

For those who do not want the sofa leg style to outweigh the design of the sofa main body, the Metal Leg Style A is a simple and timeless choice.

The optional headrest (no. HR3) delivers extra support for your head.



The optional stool (no. ST2) always comes with matching sofa legs and a woven base frame.



ELANA I M0235A

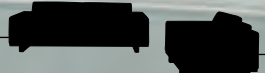


Model ELANA presents a new definition of luxury sofas. They do not only need to come with first class materials, the luxury craftsmanship is also a key element.





4D



1D

ZENA 0236



ZENA 0236



The beauty of nature solid wood has become the main design feature of Model ZENA.

Model ZENA is a timeless and minimal design piece with some unusual design features. The double-leg design is perfectly in line with the double-arm design which gives the uniqueness to Model ZENA.



The optional stool (no. ST2) always comes with matching sofa legs.



ZENA 0236



The optional headrest (no. HR3) delivers extra support for your head.



4RA CN 1.5LA

MORINI II 0239



The design concept of Model MORINI is to incorporate unconventional materials in sofas, namely, acrylic plates or wood-veneer panels.

Model MORINI II features a wood-veneer panel with checkers pattern being fixed in the middle of a hollowed sofa arm. It also has a semi-see-through feature between the outer side and the inner side of a sofa arm.



The optional headrest (no. HR4) delivers extra support for your head.



The slightly curved back shape is also an additional design feature which makes Model MORINI look appealing 360 degree while being placed at the center of a living room.



The optional coffee table (no. STW3) has a wood-veneer panel top that matches the color of the sofa arm side decorative panels of Model MORINI II.



0240-4D



0237-1D

MORINI III 0240

MORINI I 0237



MORINI III 0240 MORINI I 0237



The optional stool (no. ST2) always comes with the cushion and frame that match the sofas.



Model MORINI III features an acrylic plate with checkers pattern being fixed in the middle of a hollowed sofa arm. It also has a see-through feature between the outer side and the inner side of a sofa arm.



The design concept of Model MORINI is to incorporate unconventional materials in sofas, namely, acrylic plates or wood-veneer panels.



To completely appreciate the see-through feature of Model MORINI, you might want to choose MORINI I (no. 0237) whose arms are free of any decorative panel.

The optional headrest (no. HR3) delivers extra support for your head.

For any 1-seater (no. 1D) of the 3 versions of Model MORINI, the arms are 7cm narrower than that of the sofas.



KELVIN GIORMANI

Luxury Sofas



LXRHM

4LA90

NOVARA II 0230



Specially hand-made leathercraft details (at the back cushion front) are given to Model NOVARA which becomes the showy version, NOVARA II (no. 0230).

The strip patterns with irregular widths are popularly found in contemporary graphics which well match with modern-style living room interior settings. The alternate perforated leather strips have created the visual layers, and yet, without degrading the comfort level of back cushions

The introduced composition includes the Large-chaise (no. LXLHM or LXRHM) as shown on photos. It has two independent head-mechanisms which deliver extra back-and-neck support at 2 different sitting orientations. It can seat at least one more person comfortably comparing with the smaller chaises (no. SXLHM or SXRHM; JXLHM or JXRHM) can do.



To give a good support at the back and neck of every user, Model NOVARA has a head mechanism on each back cushion.

To enable the flat sofa arms to serve as arm rests, the arm mechanism is an option for users.

The mechanisms which come from Germany have multi-locking positions.



The strip patterns with irregular widths are popularly found in contemporary graphics which well match with modern-style living room interior settings. The alternate perforated leather strips have created the visual layers, and yet, without degrading the comfort level of back cushions.





SXR90



4LA90

NOVARA I 0229



NOVARA I is the minimal version of the model where perforated patterns are not found at the back cushion front.

To give a good support at the back and neck of every user, Model NOVARA has a head mechanism on each back cushion.

To enable the flat sofa arms to serve as arm rests, the arm mechanism is an option for users.

The mechanisms which come from Germany have multi-locking positions.



The optional stool (no. ST2) always come with matching sofa legs.

Model NOVARA was designed for creating a sofa appearance of low backs, low & flat arms and thin seat-frames, yet at the same time, coming with good sitting comfort and support.



NOVARA I 0229



The tall and see-through solid stainless steel legs are not only well in line with the thin seat-frame design; the simple-and-unique rectangular shape matches perfectly with the minimal design concept of Model NOVARA.



PICENARDI I 0231



PICENARDI I 0231

Model PICENARDI I was designed for those who are fond of minimal designs and appreciate the aesthetics of straight lines and clear profiles.

To consistently maintain clear-and-straight edges and sharp corners of Model PICENARDI I is always a challenge of high-level tailoring

As an option to give some luxury flares to Model PICENARDI I, crocodile skin printed leather can be applied to the arm, seat and back frame leather covers.

The optional coffee table (no. STG3B) can always come with the matching leather color and pattern of the sofa set.

The optional headrest (no. HR3) delivers extra support for your head.





4RA



SXL

PICENARDI II 0232



The optional stool (no. ST2) always come with matching sofa legs

The beauty of solid stainless steel has always been a focal point of the KELVIN GIORMANI Collection. In Model PICENARDI II, an L-shape solid stainless steel decorative panel is fixed at each side of the sofa arm. The solid stainless steel sofa leg appears as the continuation of the "L-shape focus."



PICENARDI II 0232

The beauty of straight lines and clear profiles appears from the front to the back side of Model PICENARDI.





Model PICENARDI II was designed for those who are fond of minimal designs and appreciate the aesthetics of straight lines and clear profiles.

To consistently maintain clear-and-straight edges and sharp corners of Model PICENARDI II is always a challenge of high-level tailoring.



The angular shape of the solid stainless steel legs is not only well in line with the straight-and-clean design concept of the sofa main body, it also creates a nice pitch for the possibility of combining a very thin seat-frame base with good sitting comfort.





KELVIN GIORMANI
Luxury Sofas



4RASM2

SXL

MASONE 0234



The optional coffee table (no. STC3W) can always come with the matching leather color of the sofa set. It also has the same frame base design as of the sofa.

The small tapering shape at the side of the back cushions matches perfectly with the inclination of sofa arms.

The stainless steel frame runs from the side to the front of each sofa arm. It gives a good transition between the impressive sofa arm side design feature and the minimal design of the front of Model MASONE.



MASONE 0234

Model MASONE presents the visual impact created by the intercrossing of genuine leather strips and stainless steel bars.





MASONE 0234



The waist pillow at each back cushion provides extra lumbar support.

The optional seat sliding mechanism (no. SM2) has 2 locking positions at both ends.

The optional headrest (no. HR4) delivers extra support for your head.





SXR



4LA

RINCINE I 0241



In contrary to the straight and flat back side of most contemporary style sofas, the back design of Model RINCINE has various curves and multi levels.



The optional stool (no. ST2) always comes with the cushion and frame that match the sofas.

Model RINCINE has unique "S" shape arms which smoothly connect to the back frame top. The arms have created an "illusion," when the sofa is viewed from certain angles, like they are "free-standing" on the top of the sofa seat. The "illusion" is even enhanced when you can see through each side of the sofa arm while sitting.

The optional stool (no. ST2) always comes with the cushion and frame that match the sofas.



RINCINE I 0241



RINCINE I 0241



The optional headrest (no. HR4) delivers extra support for your head.





CN

3RA



4LA

RINCINE II 0242



The optional coffee table (STG3B) comes with the frame design that matches the seat frame of the sofa.



RINCINE II 0242

Model RINCINE II has the back frame top 8cm deeper than that of Model RINCINE I. The extra wide back frame top becomes like a wide and flat platform on the top of the sofa group. The larger it is the sofa composition, the more grand the view (of the flat platform) from above becomes.





3RAHMESE

SXLHM

CASALE II 0248Y



Model CASALE has both reclining mechanisms and adjustable head mechanisms working independently.



The head mechanisms which come from Germany have multi-locking positions.





There are 2 different widths of sofa arm within Model CASALE. Model CASALE II (no. 0248Y) has a narrower arm which is 7cm different from the arm width of CASALE I (no. 0247Y).



The German head mechanisms can be adjusted even when the recliner function is not effected.



The American reclining mechanism can be operated electrically with a simple switch button (no. ES) or a remote control (ER)



CNRHM 2.5CHMERE
3RAHMESE SXLHM

CASALE I 0247Y



Model CASALE has both reclining mechanisms and adjustable head mechanisms working independently.

There are 2 different widths of sofa arm within Model CASALE. Model CASALE I (no. 0247Y) has a wider arm which is 7cm different from the arm width of CASALE II (no. 0248Y).

Even when the chaise unit of Model CASALE does not recline, it has the head mechanism which is in line with every connecting unit within the CASALE family.



CASALE I 0247Y



101



CASALE I 0247Y



The German head mechanisms can be adjusted even when the recliner function is not effected.

The American reclining mechanism can be operated electrically with a simple switch button (no. ES) or a remote control (ER)



KELVIN GIORMANI
Luxury Sofas



SXR



4LA

VENANZIO II 0243B



The design concept of Model VENANZIO is to have a sofa that gives you a lot of freedom. The freedom to see through the front and back, the inner arm and outer arm. The freedom to move the back cushions around to create different sitting orientations, angles and seat depths.

The ultra thin design of seat cushions offers an exceptional feeling of seating comfort. The cushions are filled with multi-layers of polyester fibers and high density polyurethane foam cores.



For a chaise-and-sofa composition (as seen on photos), it comes with 6 back cushions and 3 waist pillows which offer different sitting angles, orientations and seat depths.

Each back cushion or pillow is filled with natural feather that maximizes the back comfort.

KELVIN GIORMANI
Luxury Sofas





VENANZIO II 0243B



The transparent construction from the sofa arms to the back is supported by a number of "V" shape patterns. They are structural as well as decorative.

The various "V's" create a stunning pattern at the side and back of Model VENANZIO.



The optional coffee table (STC3W) comes with the frame design that matches the seat frame of the sofa.



4D  1D

VENANZIO I 0243A



VENANZIO I 0243A



For those who prefer conventional back comfort while sitting, Model VENANZIO I is certainly a perfect option.

The particularly designed back cushion comes with a leather rod. It is attached behind the back cushion which is supplementary to the straight and open back frame of Model VENANZIO I. It creates an optimum pitch for sitting.



The optional stool (no. ST2) always comes with the cushion and frame that match the sofas.



VENANZIO I 0243A



Swivel 1-seater (no. 1DV) is an option for easy appreciation of the magnificent see-through view of Model VENANZIO.

The optional headrest (no. HR3) delivers extra support for your head.





4DHM [REDACTED] [REDACTED] AC54

MORA 0246



The optional stool (no. ST2) always comes with the matching stainless steel base profiles.

Model MORA is by and large a timeless design piece that matches very well with any contemporary interior setting and will always be a classic. To add some flares to this timeless piece, the designer implanted very fine straight-lines pattern onto popularly-used stainless steel sofa base profiles which makes it exceptional and unique. Another special design element is the dotted straight-lines graphics being stitched onto the waist pillows. Both unusual design details are very well incorporated in the straight and clear-cut outline of Model MORA.

The head mechanisms which are operated with STABILUS German made gas lifts enhance back support.





4RA90

SXLHM

MORA 0246



The optional coffee table (STG3B) always comes with the matching stainless steel base profiles. To add some flares to a timeless design piece, the designer implanted very fine straight-lines pattern onto popularly-used stainless steel sofa base profiles which makes it exceptional and unique.



The optional seat sliding mechanism (no. SM2) has 2 locking positions at both ends.



Another special design element is the dotted straight-lines graphics being stitched onto the waist pillows. Both unusual design details are very well incorporated in the straight and clear-cut outline of Model MORA.



MORA is a design piece that can be both long lasting and one-of-a-kind.





BRENTO AC54

Model BRENTO has the swivel function and stainless steel base profile with the unique and fine straight-lines pattern.



CASI AC58

Model CASI has a swivel and chromed metal base. Its high back and inclined & narrowed arms express the elegance of the armchair.