

 **KELVIN GIORMANI**

2021



# SET OF TEXTURES

We present a new collection that wants to be a celebration: a celebration of shapes, design lines, a celebration of the highest quality materials and their combination. We wanted to celebrate the mixture of textures, the combination of opposites and the search for balance, offering with this collection more customization possibilities, a total customization so that our designs can fully adapt to your lifestyle. Let's celebrate it!



AMANDA  
LUCY  
LUCY-h  
OLA  
CUBE  
THAI  
DOLCE VITA  
CHORUS  
ROGER  
NEW YORK  
PLANO  
GNOMO



AMANDA	6
LUCY	12
LUCY-h	16
OLA	20
CUBE	24
THAI	28
DOLCE VITA	32
CHORUS	38
ROGER	40
NEW YORK	42
PLANO	44
GNOMO	46





# AMANDA

An unusual elegance that revalues contemporary lines and plays with the combination of finishes and curved surfaces.





The Amanda line has been designed with each and every detail in mind; from its comfort to the combination of shapes and volumes.

Amanda armchair can be combined with your sofa or become a contrasting element that stands out in the living room. The excellent craftsmanship of the leather of its curved piece that opens at the back, is the distinctive point of this piece of contemporary design.





The lightness of its volumes is achieved by refining the curves of the backrest and the arms, which subtly gather the body of the seat, making this sofa an essential piece for a modern and exclusive interior design.





# LUCY

We celebrate and honor the purest Italian design of the 60s and 70s with Lucy, an iconic and versatile armchair.









# LUCY-h

The tall version of Lucy, Lucy-h, lengthens its backrest to offer more support and comfort.







Both Lucy and Lucy-h are available in a wide variety of finishes, which makes them truly versatile pieces that adapt according to the taste and needs of its user.

The details of Lucy and Lucy-h are radically modern: from the tubular foot available in different finishes, which includes the “shell” of the seat, the leather support of said tubular structure or the meticulous work of the cutting and sewing pattern of everything. her body...





# OLA

A reinterpretation of the classic chaise longue, the curves of Ola are directly inspired by the lines of the designs of the universal architect, Gaudí.







Ola is an ode to the possibilities of organic design, play, comfort and pleasant living. Its large downward curve of the main body marks a unique and unmatched design. The combination of leather and fabrics together with the set of different cushions and backrests, give this sofa a voluptuous character that is inspired by nature.







# CUBE

True mastery is demonstrated in simple line pieces, with elements developed seeking excellence and selecting the most suitable fabrics, woods and leathers for the design: all this is Cube.





The value of comfort is what defines the character of Cube the most. The study of the internal structure of the sofa has been done to provide a high level of comfort and to mark a characteristic line of sponginess. The folds and seams that have been developed for the fabric and leather upholstery of Cube are an essential part of the design. The geometric elements in wood with upholstery in leather, give a fully architectural contrast to the whole.













# DOLCE

This sofa is much more than a sofa, it is the soul of Italian design with the quality standards and the taste for the form, the technique and the functionality of the same. Dolce Vita combines 100% Italian leather and fabrics in a masterful way to offer warmth, comfort and elegance.



According to the popular Italian voice, life without beauty loses its meaning. Dolce Vita is a declaration of intent for a true Italian design.

# VITA







## An essential accompaniment.

As a novelty 2021, we present the new collection of side tables and pouffs that definitely complement Kelvin Giormani's living ambient.

It is a set of pieces with a luxurious and extremely sophisticated design that combine all the signature finishes, adding marbles and crystals.

This allows customizing and coordinating the design of the coffee tables and auxiliary tables with the finishes of the sofa and the other elements of the environment.







# CHORUS

A combination of light, dynamic elements and subtle sophistication to mark the counterpoint to the most exclusive combinations.





ROGER

An architectural assemblage of pure materials; the beauty of the union of marble, glass and metal in a sculptural piece of avant-garde design.





# NEW YORK

The combination of different geometric bodies on stylized legs, a rhythmic set of containers with a perfectly balanced soft combination of materials.







Family of side tables and coffee tables perfect to combine with a comprehensive living room design. The sumptuousness of the leather with the elegance of marble and wood give these pieces a unique and versatile character.





These small customizable seats and supports (with finishes in leather, fabric and types of stitching to choose from) provide the counterpoint to any space by providing combinations of color and shape and auxiliary seats.





v i s u a l  
i n d e x

Leather: 7509/7507-4D  
(subject to availability)



A M A N D A    0 6 5 3 A H 1

Leather: 7509/7506-1D  
(subject to availability)



A M A N D A    0 6 5 3 C H 1

F I N I S H E S  
R E F E R E N C E S  
&  
P R O D U C T    C O D E

Leather: 3313/3319-4DB  
(subject to availability)



T H A I    0 6 5 4 A H 1

Leather:7018-1D  
(subject to availability)



L U C Y    C 0 0 7 A M 1



visual  
index

Leather: 3313-1D  
(subject to availability)



L U C Y - h C O O 8 A M 1

Fabric:96/6031/A-720  
Leather:3119-2EL+DXR  
(subject to availability)



O L A O 6 6 1 B M 1

FINISHES  
REFERENCES  
&  
PRODUCT CODE

Fabric:00/280/A-970  
Leather:3313-4DB  
(subject to availability)



C U B E O 6 5 6 B

Leather: 3313/3319-4DB  
(subject to availability)



T H A I O 6 5 4 A H 1



visual  
index

Fabric:00/280/A-970  
Leather:7559-3LA+DXR  
(subject to availability)



D O L C E V I T A 0 6 5 2 B M 1

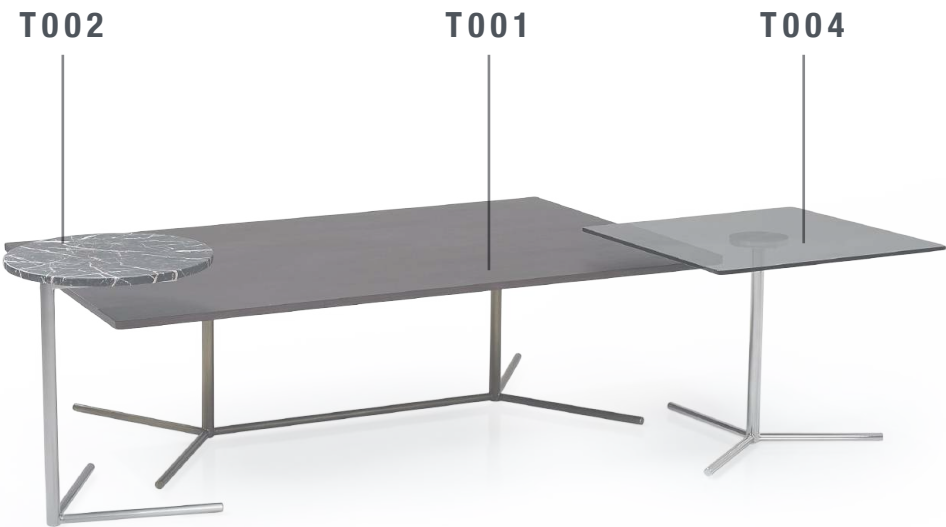
FINISHES  
REFERENCES  
&  
PRODUCT CODE

White Marble Top: T009  
(subject to availability)



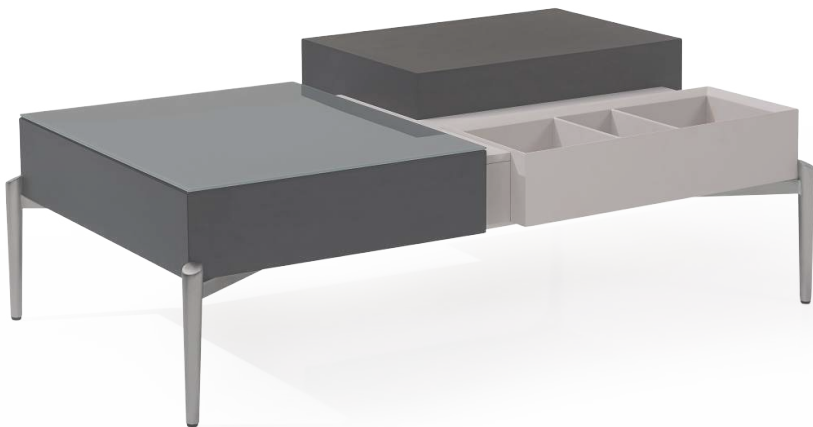
R O G E R T 0 0 9

Wood Veneer Top: CVL-16-T001  
Black Marble Top: T002  
Grey Smoked Glass Top: T004  
(subject to availability)



C H O R U S

Wood Veneer Top: CVL16-T015AM1  
Dark Gray Glass Top  
(subject to availability)



N E W Y O R K T 0 1 5 A M 1



visual  
index

FINISHES  
REFERENCES  
&  
PRODUCT CODE

PLANO I  
White Marble Top: T016AM1  
Leather: 3365  
(subject to availability)

PLANO I  
Black Marble Top: T016AM1  
Leather: 3365  
(subject to availability)



P L A N O I

PLANO II  
Black Glass Top: T017BM1  
Leather: 5615  
(subject to availability)

PLANO IV  
White Marble Top: T019AM1  
Leather: 5615  
(subject to availability)



P L A N O I I - P L A N O I V



P L A N O I I - P L A N O I V

PLANO II  
Wood Veneer Top: CVL16-  
T017CM1  
Leather: 8115  
(subject to availability)

PLANO IV  
White Marble Top: T019AM1  
Leather: 8115  
(subject to availability)

PLANO IV  
White Marble Top: T019AM1  
Leather: 5615  
(subject to availability)



P L A N O I I I - P L A N O V

PLANO V  
Black Marble Top: T020AM1  
Leather: 8115  
(subject to availability)

PLANO III  
White Marble Top: T018AM1  
Leather: 8115  
(subject to availability)



visual  
index

FINISHES  
REFERENCES  
&  
PRODUCT CODE

PLANO VI  
Black Glass Top: T021BM1  
Leather: 7516  
(subject to availability)

PLANO IV  
Black Glass Top: T019BM1  
Leather: 7516  
(subject to availability)



P L A N O   V I   -   P L A N O   I V

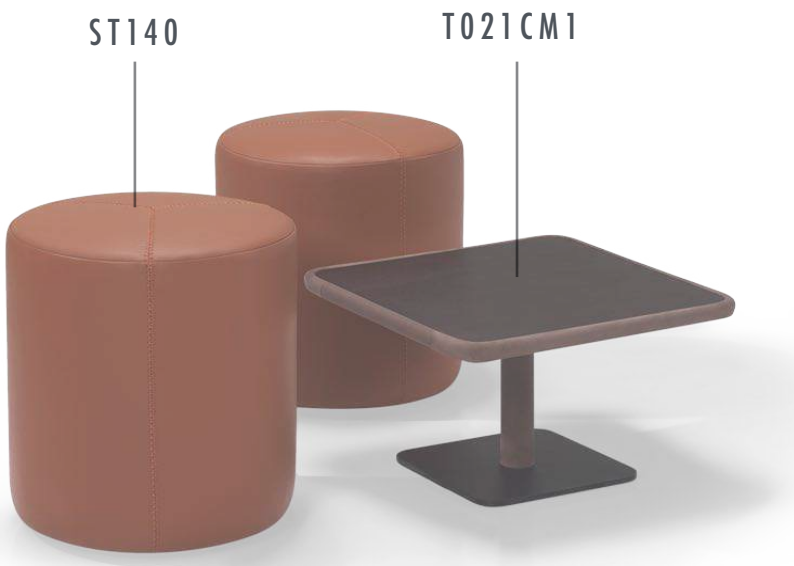


GNOMO C  
Leather: 3365-ST139  
Leather: 3365-ST140  
Fabric: 96/6301/A-222-ST139  
(subject to availability)

G N O M O   C

PLANO VI  
Wood Veneer Top: CVL02-T021CM1  
Leather: 8115  
(subject to availability)

GNOMO C  
Leather: 7543-ST140  
(subject to availability)



G N O M O   C   -   P L A N O   V I



GNOMO S  
Leather: 5613-ST141  
(subject to availability)

G N O M O   S



# Kelvin Giormani values of quality and sustainability

Kelvin Giormani has always sought the main international suppliers and manufacturing processes to offer a product of the highest quality and with unique designs that are recognized around the world.

All the leathers we use come from Italy, with the highest quality and environmental standards. Likewise, our selection of fabrics, also made 100% Italian, offer the customer the contemporary and international touch that accompanies our product lines, always thinking about aesthetic values and maximum resistance, washing facilities and comfort.





# MICHELE MANTOVANI STUDIO

Michele Mantovani is an Italian architect and CEO of MICHELE MANTOVANI STUDIO based in Barcelona. His career started at Politecnico di Milano in 2010 and carried on as a professional in Carlo Colombo studio, where developed several projects of interior and furniture design.

Nowadays, the multidisciplinary team of Michele Mantovani Studio works with a broad concept of the different fields of design: architecture, interior design, corporate art direction, contemporary furniture design and graphic design.

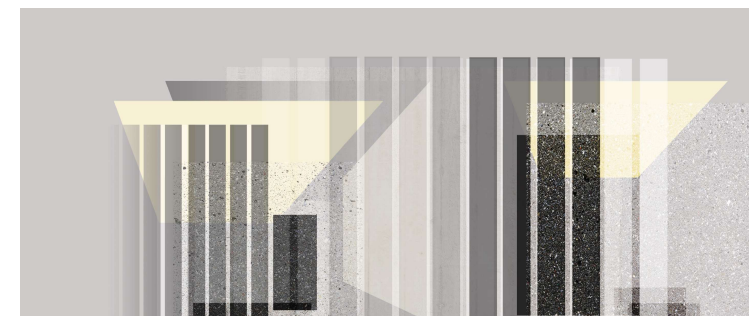
The Michele Mantovani signature can be found around the world in numerous projects of architecture and furniture design, showrooms and interior design projects, architecture and art direction in Asia, the United States, Italy, Spain and Russia.

MMS works for international clients developing projects of open and complete design concept, adapting in each case to the need of each corporation or person to make the most demanding and innovative designs come true.

To sum up, MMS is not just a studio, is a dreams maker.



*Michele Mantovani*  
MICHELE MANTOVANI STUDIO



## CREDITS

FURNITURE DESIGN  
MICHELE MANTOVANI STUDIO

ART DIRECTION AND GRAPHIC DESIGN  
ALBERTO MERINO

RENDERING  
DPB STUDIO

9

PRINTED IN 2021





ARREDAMENTI COMPANY LTD.

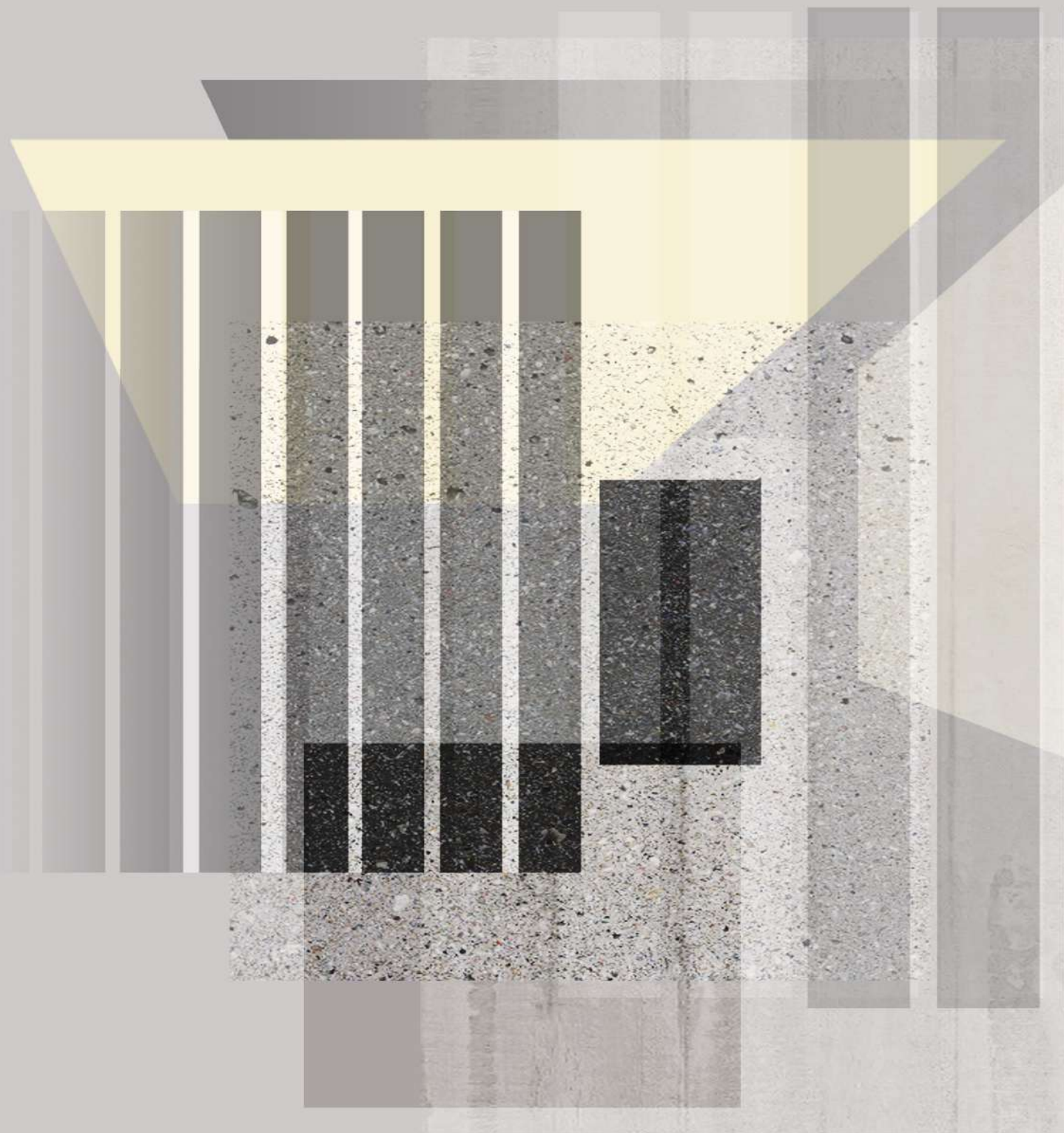
HONG KONG HEADQUARTER  
ADDRESS: 6/F. , YAN HING CENTRE, 9-13  
WONG CHUK YEUNG ST. , FO TAN,  
N.T.,

HONG KONG  
PHONE: 852 2690 3884  
FAX: 852 2947 0835

CHINA FACTORY

ADDRESS: PAN SHAN, DA LING  
SHAN,  
DONG GUAN,  
GUANG DONG, CHINA  
PHONE: 86 769 8560 4810  
FAX: 86 769 8335 3409





2021

 KELVIN GIORMANI