

ALEAL Finishes

LACQUER FINISHES



LC01 BLACK



LC02 WHITE



LC07 BRICK RED



LC11 TOMATO RED



LC12 SLATE GRAY



LC13 IVORY



LC14 METALLIC
GRAY



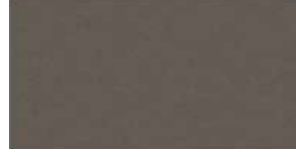
LC15 GRAY BEIGE



LC16 FOG GRAY



LC18 METALLIC
TAUPE



LC19 CAMOUFLAGE



LC20 GUN
METAL GRAY



LC21 MUSTARD
YELLOW



LC22 ASH GRAY



LC23 SILVER
GRAY



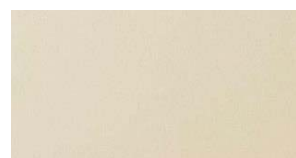
LC26 BURGANDY



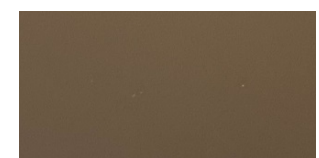
LC27 RUBY



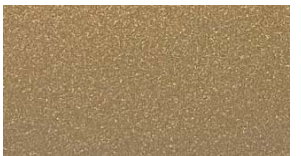
LC28 CAPPUCCINO



LC36 PEARL



LC37 PEWTER



LC38 PALOMINO



LC39 PETROL BLUE



BRONZE



SILVER



GOLD



CHAMPAGNE

PLEASE NOTE ABOVE LACQUERS ARE AVAILABLE IN THE BELOW SHEENS:

5% MATTE OR 30% SEMIGLOSS - USE MATTE PRICING

100% SHEEN - USE HIGH GLOSS PRICING

ALEAL Finishes

OAK & WALNUT FINISHES



BLACK OAK CV01



CHOCOLATE OAK
CV02



SLATE GRAY OAK
CV03



IVORY OAK CV12



METALLIC TAUPE
OAK CV11



METALLIC GRAY
OAK CV10



OPAL GRAY OAK
CVL15



GRAY BEIGE OAK
CV09



WHITE OAK CV04



CHERRY OAK CV05



NATURAL OAK CV06



STEEL GRAY OAK
CVL14



SMOOTH CHOCOALTE
OAK CVL16



CVL19



WILD OAK CV06



WALNUT NG01

PLEASE NOTE ABOVE WOODS ARE AVAILABLE IN THE BELOW SHEENS:

5% MATTE OR 30% SEMIGLOSS - USE MATTE PRICING

*THEY ARE NOT AVAILABLE IN 100% SHEEN HIGH GLOSS**

ALEAL Finishes

STANDARD CERAMIC FINISHES



ARENA



ARTIC WHITE



AVORIO



BARRO



BASALT BEIGE



BASALT BLACK



BELGIAN BLUE



BASALT GREY



CEMENT



IRON COPPER



IRON CORTEN



IRON GREY



IRON MOSS



LAVA



PERLA

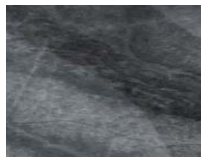
SPECIAL CERAMIC FINISHES (MARBLE IMITATIONS w/ GLOSS FINISH)



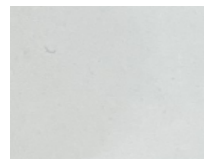
SILK GRISS



CARRARA
POLIDO



MEDUSA



ESTUARIO
POLIDO



CALCATA



SILK GRIS
NATURAL



ONICE BEJE
(MATTE FINISH)

PLEASE NOTE :

The above ceramic finishes cannot be applied to Extension tables -- they are too thick (5.6 MM).

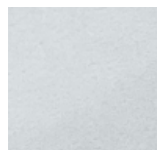
SPECIAL CERAMIC FINISHES (MARBLE IMITATIONS w/ MATTE FINISH)



THUNDER
LIGHT



CALCATA MIX



ESTATUARIO



CARRARA
NATURAL



TEMPO SMOKE



SUPREME
NATURAL

PLEASE NOTE :

Special Pricing for Marble Imitation Ceramics - Must Get Quote