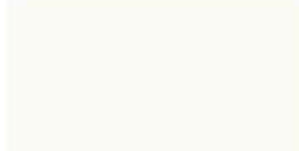


# ALEAL Finishes

## LACQUER FINISHES



LC01 BLACK



LC02 WHITE



LC07 BRICK RED



LC11 TOMATO RED



LC12 SLATE GRAY



LC13 IVORY



LC14 METALLIC  
GRAY



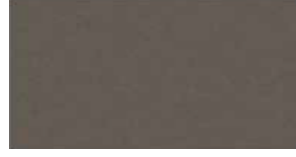
LC15 GRAY BEIGE



LC16 FOG GRAY



LC18 METALLIC  
TAUPE



LC19 CAMOUFLAGE



LC20 GUN  
METAL GRAY



LC21 MUSTARD  
YELLOW



LC22 ASH GRAY



LC23 SILVER  
GRAY



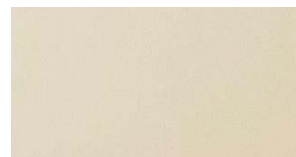
LC26 BURGANDY



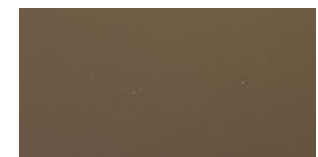
LC27 RUBY



LC28 CAPPUCCINO



LC36 PEARL



LC37 PEWTER



LC38 PALOMINO



LC39 PETROL BLUE



BRONZE



SILVER



GOLD



CHAMPAGNE

**PLEASE NOTE ABOVE LACQUERS ARE AVAILABLE IN THE BELOW SHEENS:**

5% MATTE OR 30% SEMIGLOSS - USE MATTE PRICING

100% SHEEN - USE HIGH GLOSS PRICING

# ALEAL Finishes

## OAK & WALNUT FINISHES



BLACK OAK CV01



CHOCOLATE OAK  
CV02



SLATE GRAY OAK  
CV03



IVORY OAK CV12



METALLIC TAUPE  
OAK CV11



METALLIC GRAY  
OAK CV10



OPAL GRAY OAK  
CVL15



GRAY BEIGE OAK  
CV09



WHITE OAK CV04



CHERRY OAK CV05



NATURAL OAK CV06



STEEL GRAY OAK  
CVL14



SMOOTH CHOCOLATE  
OAK CVL16



CVL19



RUSTIC OAK CVL17



WILD OAK CV06



WALNUT NG01

**PLEASE NOTE ABOVE WOODS ARE AVAILABLE IN THE BELOW SHEENS:**

5% MATTE OR 30% SEMIGLOSS - USE MATTE PRICING

\*THEY ARE NOT AVAILABLE IN 100% SHEEN HIGH GLOSS\*\*

# ALEAL Finishes

## EBONY



RECONSTITUTED  
EBONY



NATURAL EBONY

## ROSEWOOD



RECONSTITUTED  
ROSEWOOD

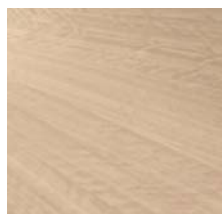


NATURAL  
ROSEWOOD

## EUCALYPTUS FRISE



GREY EUCALYPTUS

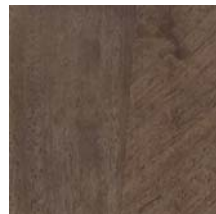


POLAR EUCALYPTUS



ESPRESSO EUCALYPTUS

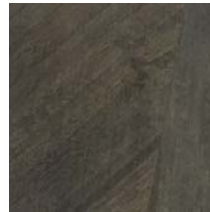
## PLAIN STAINED EUCALYPTUS



SOFT PLUM



ARGENTO



SOFT GREY



TOFFEE

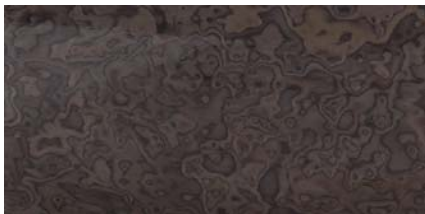
## TULIP WOOD



## OAK FUME



## ASH BURL



BURGANDY



LIGHT GRAY

**PLEASE NOTE ABOVE WOODS ARE AVAILABLE IN THE BELOW SHEENS:**

5% MATTE OR 30% SEMIGLOSS - USE MATTE PRICING

100% SHEEN - USE HIGH GLOSS PRICING

# ALEAL Finishes

## STAINLESS STEEL



**POLISHED STAINLESS  
STEEL**



**BRUSHED STAINLESS  
STEEL**

## BRASS



**BRUSHED BRASS**



**BRUSHED ANTIQUE BRASS**

## POLISHED PLATED STAINLESS STEEL



**COPPER**



**NICKEL NOIR**



**GOLD**

# ALEAL Finishes

## CERAMIC FINISHES



ARENA



ARTIC WHITE



AVORIO



BARRO



BASALT BEIGE



BASALT BLACK



BELGIAN BLUE



BASALT GREY



CEMENT



IRON COPPER



IRON CORTEN



IRON GREY



IRON MOSS



LAVA



PERLA

## CERAMIC FINISHES (MARBLE IMITATIONS w/ GLOSS FINISH)



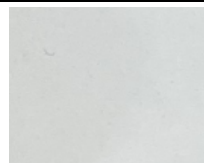
SILK GRISS



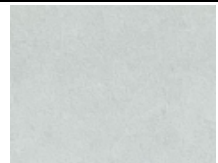
CARRARA  
POLIDO



MEDUSA



ESTUARIO POLIDO



CALCATA



SILK GRIS  
NATURAL



ONICE BEJE  
(MATTE FINISH)

### **PLEASE NOTE :**

The above ceramic finishes cannot be applied to Extension tables -- they are too thick (5.6 MM).

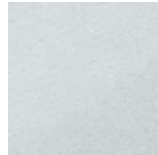
## CERAMIC FINISHES (MARBLE IMITATIONS w/ MATTE FINISH)



THUNDER  
LIGHT



CALCATA MIX



ESTUARIO



CARRARA  
NATURAL



TEMPO SMOKE



SUPREME  
NATURAL

### **PLEASE NOTE :**

Special Pricing for Marble Imitation Ceramics - Must Get Quote