

# Finishes

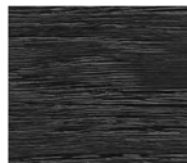
## OAK (ROBLE)



White Feather Oak  
(Blanco Pluma)



Coffee Oak  
(Cafe)



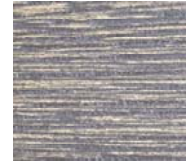
Black Night Oak  
(Negro Noche)



North Gray Oak  
(Gris Norte)



Brown Volcano Oak  
(Marron Volcanico)



Gold Volcano Oak  
(Oro Volcanico)

## OAK BURL (ROBLE RAIZ)



Warm White Oak Burl  
(Blanco Calido)



Coffee Oak Burl  
(Cafe)



Black Night Oak Burl  
(Negro Noche)



North Gray Oak Burl  
(Gris Norte)



Brown Volcano Oak Burl  
(Marron Volcanico)

## WALNUT (NOGAL)

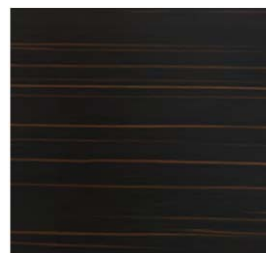


Dark Walnut  
(Nogal Oscuro Color 1)



Light Walnut  
(Nogal Claro Color 2)

## EBONY



## METAL



High Gloss Brass  
(Laton Brillo)



Antique Brass  
(Laton Antiguo)



Matte Brass  
(Laton Mate)



Rose Brass  
(Laton Rosa)



Brushed Stainless Steel  
(Acero Patinado)



Shiny Stainless Steel  
(Acero Brillo)



Black Copper  
(Cobre Negro)

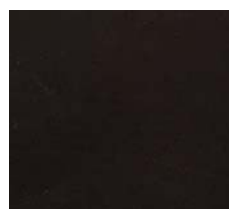
## PAINTED METAL



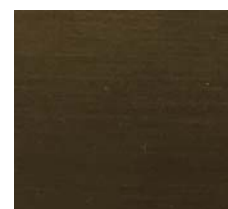
Dark Silver  
(Silver Oscuro)



Light Silver  
(Silver Claor)



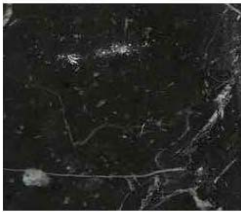
Black Copper  
(Cobre Vital)



Brushed Brass  
(Ambar Patindao)

# Finishes

## MARBLE



Black Marble  
(Negro Marquina)



Emperador Gold  
(Emperador Oro)



White Marble  
(Blanco Macael)



Luzinda White Marble  
(Blanco Luzinda)

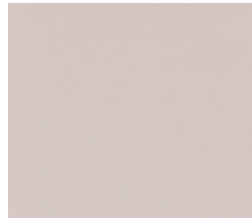
## LACQUERS



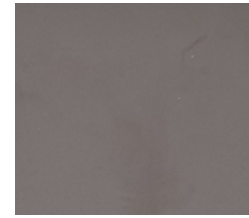
Black Pizarra  
(Negro Pizarra)



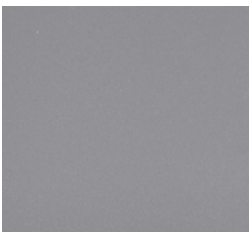
Mustard  
(Mostaza)



Clear Beige  
(Beige Claro)



Brown Pizarra  
(Marron Pizarra)



Land  
(Tierra)



Cobalt Blue  
(Cobalto)

**Lacquer Finishes:  
5% Sheen Standard**

**100% Sheen Available--  
5% Upcharge**

## LACQUER PAINTED FINISHES ON OAK OPEN PORE



Black Pizarra  
(Negro Pizarra)



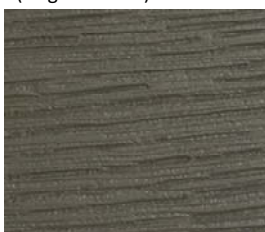
Mustard  
(Mostaza)



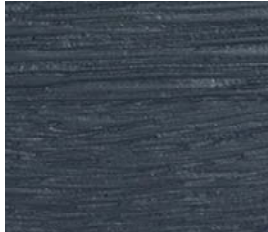
Clear Beige  
(Beige Claro)



Brown Pizarra  
(Marron Pizarra)



Land



Cobalt Blue