

# Finishes

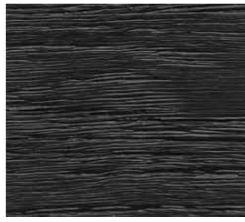
## OAK (ROBLE)



White Feather Oak  
(Blanco Pluma)



Coffee Oak



Black Night Oak  
(Negro Noche)



North Gray Oak  
(Gris Norte)



Brown Volcano Oak  
(Marron Volcano)

## OAK BURL (ROBLE RAIZ)



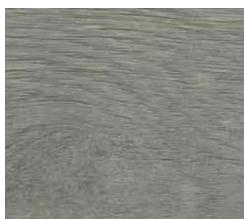
Warm White Oak Burl  
(Blanco Calido)



Coffee Oak Burl  
(Cafe)



Black Night Oak Burl  
(Negro Noche)



North Gray Oak Burl  
(Gris Norte)



Brown Volcano Oak Burl  
(Marron Volcanico)

## WALNUT (NOGAL)



Dark Walnut  
(Nogal Oscuro Color 1)



Light Walnut  
(Nogal Claro Color 2)

# Finishes

## LACQUERS



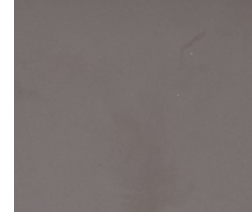
Black Pizarra  
(Negro Pizarra)



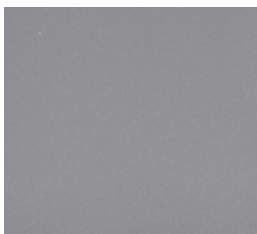
Mustard  
(Mostaza)



Clear Beige  
(Beige Claro)



Brown Pizarra  
(Marron Pizarra)



Land  
(Tierra)



Cobalt Blue  
(Cobalto)

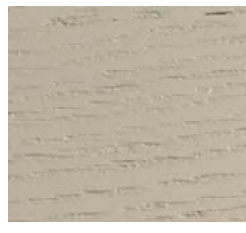
## LACQUER PAINTED FINISHES ON OAK OPEN PORE



Black Pizarra  
(Negro Pizarra)



Mustard  
(Mostaza)



Clear Beige  
(Beige Claro)



Brown Pizarra  
(Marron Pizarra)



Land  
(Tierra)



Cobalt Blue  
(Cobalto)