

ALEAL Finishes

LACQUER FINISHES



LC01 BLACK



LC02 WHITE



LC07 BRICK RED



LC11 TOMATO RED



LC12 SLATE GRAY



LC13 IVORY



LC14 METALLIC
GRAY



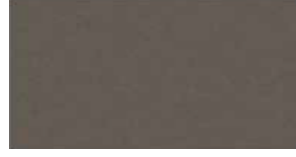
LC15 GRAY BEIGE



LC16 FOG GRAY



LC18 METALLIC
TAUPE



LC19 CAMOUFLAGE



LC20 GUN
METAL GRAY



LC21 MUSTARD
YELLOW



LC22 ASH GRAY



LC23 SILVER
GRAY



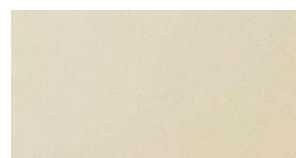
LC26 BURGANDY



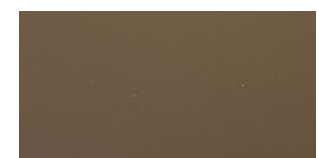
LC27 RUBY



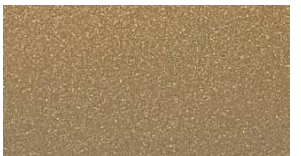
LC28 CAPPUCCINO



LC36 PEARL



LC37 PEWTER



LC38 PALOMINO



LC39 PETROL BLUE



BRONZE



SILVER



GOLD



CHAMPAGNE

PLEASE NOTE ABOVE LACQUERS ARE AVAILABLE IN THE BELOW SHEENS:

5% MATTE OR 30% SEMIGLOSS - USE MATTE PRICING

100% SHEEN - USE HIGH GLOSS PRICING

ALEAL Finishes

OAK & WALNUT FINISHES



BLACK OAK CV01



CHOCOLATE OAK
CV02



SLATE GRAY OAK
CV03



IVORY OAK CV12



METALLIC TAUPE
OAK CV11



METALLIC GRAY
OAK CV10



OPAL GRAY OAK
CVL15



GRAY BEIGE OAK
CV09



WHITE OAK CV04



CHERRY OAK CV05



NATURAL OAK CV06



STEEL GRAY OAK
CVL14



SMOOTH CHOCOLATE
OAK CVL16



CVL19



RUSTIC OAK CVL17



WILD OAK CV06



WALNUT NG01

PLEASE NOTE ABOVE WOODS ARE AVAILABLE IN THE BELOW SHEENS:

5% MATTE OR 30% SEMIGLOSS - USE MATTE PRICING

*THEY ARE NOT AVAILABLE IN 100% SHEEN HIGH GLOSS**

ALEAL Finishes

EBONY



RECONSTITUTED
EBONY

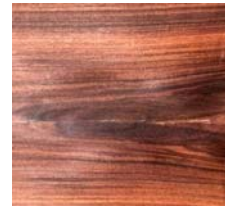


NATURAL EBONY

ROSEWOOD



RECONSTITUTED
ROSEWOOD

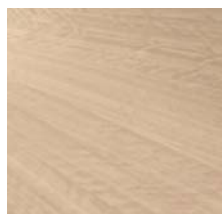


NATURAL
ROSEWOOD

EUCALYPTUS FRISE



GREY EUCALYPTUS

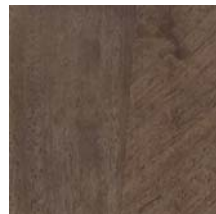


POLAR EUCALYPTUS



ESPRESSO EUCALYPTUS

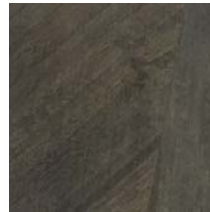
PLAIN STAINED EUCALYPTUS



SOFT PLUM



ARGENTO



SOFT GREY



TOFFEE

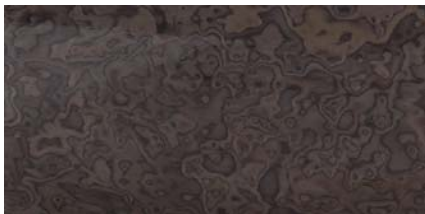
TULIP WOOD



OAK FUME



ASH BURL



BURGANDY



LIGHT GRAY

PLEASE NOTE ABOVE WOODS ARE AVAILABLE IN THE BELOW SHEENS:

5% MATTE OR 30% SEMIGLOSS - USE MATTE PRICING

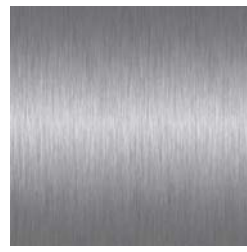
100% SHEEN - USE HIGH GLOSS PRICING

ALEAL Finishes

STAINLESS STEEL



**POLISHED STAINLESS
STEEL**



**BRUSHED STAINLESS
STEEL**

BRASS



BRUSHED BRASS



BRUSHED ANTIQUE BRASS

POLISHED PLATED STAINLESS STEEL



COPPER



NICKEL NOIR



GOLD

MARBLES



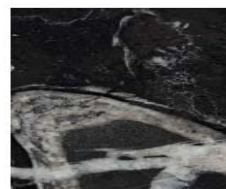
M06



M07



M08



M09



M10