

Please also note our general details and sales information

Edition 29.08.2024

Errors and amendments excepted. Our General Terms and Conditions are effective. / WEEE-Reg.-No. DE 69718127

## DESIGN

### CONSTRUCTIVE DESIGN

All the materials used correspond to the requirements according to RAL-GZ 430/3

Single chair, metal base frame, form foam

Seat upholstery structure: zig-zag springs, Dacron, form foam, Diolen

Back upholstery structure: form foam, Diolen

### UPHOLSTERY CASUAL / LOOSE

With casual upholsteries you are rather sitting „in the sofa“ than on it, the upholstery snuggles. A casual/loose upholstery is characterized by a smooth upholstery structure. The cover is not wavel-ess. The ridge of the covers on the seat, back and armrests as well as sitzmarks due to the model and design are typical.

### BACK TENSIONING SECTIONS

All back tensioning sections are supplied as standard with the original cover.

## COVERING MATERIALS

You may find the information concerning the specific properties of the covering materials on the sample labels.

Alternative covers of the wide upholstery covering material collection (**exception N-NATURO**) are possible as custom-made product. Therefor an extra charge of all in 20% is valid for fabric and leather.

## LEATHER HOLDER

Leather holder (against extra charge see price sheet) optionally available in:

- black
- brown



## INDICATIONS OF DIMENSIONS AND REQUIREMENTS

All the values given are approximate values: dimensions in centimetres, material requirements in metres, leather requirements in square metres.

## LEGS

### Chairs SAVX, SAV, SVX and SV

Leg solid wood (UV laminated with oil effect) optionally available in:

- beech
- wild oak natural
- wild oak bianco
- walnut (against extra charge see price sheet)

or

- wild oak black stained (lacquered)

from the left to the right:



**Please note:** With the chairs SAVX and SVX the seat is rotatable by 320°. In addition the seat has an automatic return. Here the seat returns self-acting into the basic position on standing up.



### Chairs SAF and SF

Cantilever optionally available in:

- stainless steel optics
- metal powder-coated structural black mat



## SEAM

Depending on the model, the seam on leather covers may be different from fabric covers, especially on fitted items. Decorative leather seam (as felled seams or double seams) may be omitted depending on the model according to suitability of the fabric covering material.



Please also note our general details and sales information

Edition 29.08.2024

Errors and amendments excepted. Our General Terms and Conditions are effective.

## CONTRAST STITCHING

The seam construction diagram and the thread size are defined due to the model.

With leather covers the production is carried out either **with contrast stitching** or with a **thread (tone on tone)** matching the leather in terms of colour. Therefore in such cases the finish must be chosen.

By processing with contrast stitching **the best matching colour of the contrast stitching** was chosen for each leather colour. It will be worked automatically while a certain colour of contrast stitching is not explicitly indicated on the order. More for it in the general sales information.

The below displayed combinations of seam colour and leather colour are recommended, exemplary assignments of the 6 available colours of contrast stitching.



LIGHT GREY 0321



BEIGE 1222



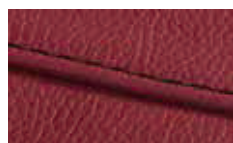
NOUGAT 0281



GREY 0415



DARK BROWN 1002



BLACK 4000



Unfortunately with fabric- and microfiber covers contrast stitching is not possible.

### Exception fabric 13-BISON:

With these fabric it can also be chosen between production with contrast stitching or a thread matching the fabric in terms of colour (tone-on-tone).

## ORDER CHECK LIST

Please pay attention to the following issues respectively to complete specifications when ordering:

- **article**
- **covering material**, (in general N-NATURO is not possible)
- with leather covers production **with or without contrast stitching**
- with SAVX, SAV, SVX and SV: **finish of solid wooden leg**
- with SAF and SF: **finish of cantilever**
- **finish of leather holder** if desired



Errors and amendments excepted. Our General Terms and Conditions are effective.

## I CHAIRS



SD  
SH

45  
50

AR-chair leg rotatable	AR-chair leg	Chair leg rotatable	Chair leg	AR-chair cantilever	Chair cantilever
<b>SAVX</b> 	<b>SAV</b> 	<b>SVX</b> 	<b>SV</b> 	<b>SAF</b> 	<b>SF</b> 
H 90 D 66	H 90 D 66	H 91 D 63	H 91 D 63	H 92 D 65	H 92 D 61
57	57	48	48	57	46

W

<b>Requirement</b>	1,50	1,50	1,10	1,10	1,50	1,10
<b>COM</b>						
<b>Price in fabric:</b>						
<b>Price in fabric Q2 - for Rohleder Studioline-Concept (bound to showroom orders):</b>						

FABRIC

<b>Requirement</b>	2,50	2,50	1,80	1,80	2,50	1,80
<b>COM</b>						
<b>Price in leather (except N-NATURO):</b>						
<b>Extra charge for solid wooden legs in walnut:</b>						
<b>Extra charge for leather holder:</b>						
<b>For all fabrics and leathers of the current DINING Collection only one price is valid in each case. (Exception Rohleder Studioline-Concept).</b>						
<b>If desired alternative covers of the wide upholstery covering material collection (exception N-NATURO) are possible as custom-made product. Therefore an extra charge of all in 20% is valid for fabric and leather.</b>						

LEATHER