

ALEAL BEDROOMS

BOOK 2



PLANUM[®]
F U R N I T U R E

Swedesford Corporate Center
619 B Swedesford Road
Frazer, PA 19355

Email: info@planumfurniture.com
Website: planumfurniture.com

Tel : 610/251-2120
Tel : 800/343-0042
Fax : 610/251-2290

ALEAL Finishes

LACQUER FINISHES



LC01 BLACK



LC02 WHITE



LC07 BRICK RED



LC11 TOMATO RED



LC12 SLATE GRAY



LC13 IVORY



LC14 METALLIC
GRAY



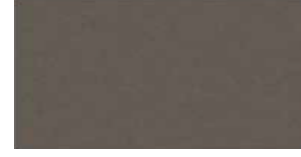
LC15 GRAY BEIGE



LC16 FOG GRAY



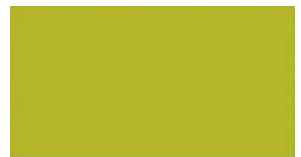
LC18 METALLIC
TAUPE



LC19 CAMOUFLAGE



LC20 GUN
METAL GRAY



LC21 MUSTARD
YELLOW



LC22 ASH GRAY



LC23 SILVER
GRAY



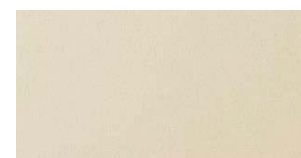
LC26 BURGANDY



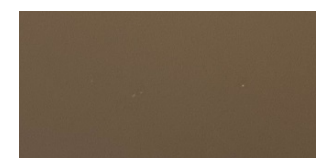
LC27 RUBY



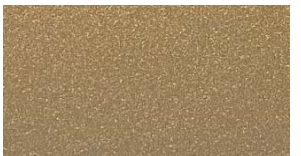
LC28 CAPPUCCINO



LC36 PEARL



LC37 PEWTER



LC38 PALOMINO



LC39 PETROL BLUE



BRONZE



SILVER



GOLD



CHAMPAGNE

PLEASE NOTE ABOVE LACQUERS ARE AVAILABLE IN THE BELOW SHEENS:

5% MATTE OR 30% SEMIGLOSS - USE MATTE PRICING

100% SHEEN - USE HIGH GLOSS PRICING

ALEAL Finishes

OAK & WALNUT FINISHES



BLACK OAK CV01



CHOCOLATE OAK
CV02



SLATE GRAY OAK
CV03



IVORY OAK CV12



METALLIC TAUPE
OAK CV11



METALLIC GRAY
OAK CV10



OPAL GRAY OAK
CVL15



GRAY BEIGE OAK
CV09



WHITE OAK CV04



CHERRY OAK CV05



NATURAL OAK CV06



STEEL GRAY OAK
CVL14



SMOOTH CHOCOALTE
OAK CVL16



CVL19



RUSTIC OAK CVL17



WILD OAK CV06



WALNUT NG01

PLEASE NOTE ABOVE WOODS ARE AVAILABLE IN THE BELOW SHEENS:

5% MATTE OR 30% SEMIGLOSS - USE MATTE PRICING

*HIGH GLOSS 100% SHEEN IS AVAILABLE AT 6% UPCHARGE**

ALEAL Finishes

EBONY



RECONSTITUTED
EBONY

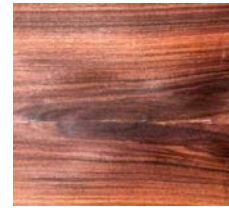


NATURAL EBONY

ROSEWOOD



RECONSTITUTED
ROSEWOOD

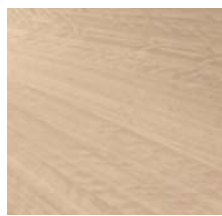


NATURAL
ROSEWOOD

EUCALYPTUS FRISE



GREY EUCALYPTUS



POLAR EUCALYPTUS



ESPRESSO EUCALYPTUS

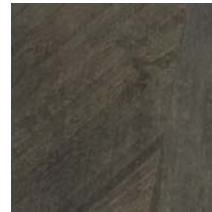
PLAIN STAINED EUCALYPTUS



SOFT PLUM



ARGENTO



SOFT GREY



TOFFEE

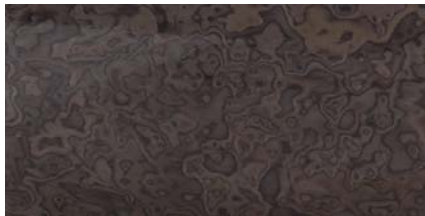
TULIP WOOD



OAK FUME



ASH BURL



BURGANDY



LIGHT GRAY

PLEASE NOTE ABOVE WOODS ARE AVAILABLE IN THE BELOW SHEENS:

5% MATTE OR 30% SEMIGLOSS - USE MATTE PRICING

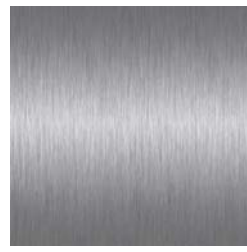
100% SHEEN - USE HIGH GLOSS PRICING

ALEAL Finishes

STAINLESS STEEL



**POLISHED STAINLESS
STEEL**



**BRUSHED STAINLESS
STEEL**

BRASS



BRUSHED BRASS



BRUSHED ANTIQUE BRASS

POLISHED PLATED STAINLESS STEEL



COPPER



NICKEL NOIR



GOLD

MARBLES



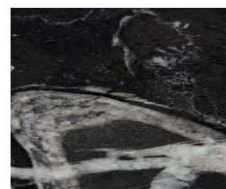
M06



M07



M08



M09



M10

****PLEASE NOTE: FINISHES ARE SPECIFIED IN THE BEDROOM PRICE LISTS, ALL FINISHES ARE NOT AVAILABLE ON ALL BEDROOMS. PLEASE READ THE FINISH DESCRIPTION IN EACH BEDROOM COLLECTION TO KNOW WHAT FINISH IS SPECIFIED.****

ALEAL

TABLE OF CONTENTS

	<u>PAGE #</u>
MADISON BEDROOM	7
MAJESTIC BEDROOM	17
NOAH BEDROOM	23
PRESTIGE BEDROOM	27
SCARLETT BEDROOM	30
TIFFANY BEDROOM	40
VERONA BEDROOM	44
VIENA BEDROOM	48

MADISON Bed	Description		Dimensions in Inches		
	Item No.	Finish	W	H	D

FINISH SPECIFICATION:

-UPHOLSTERED HEADBOARD WITH WOOD OR LACQUER HEADBOARD SIDES

-UPHOLSTERED BEDFRAME WITH MITERED CORNERS IN WOOD OR LACQUER

-WOOD OR LACQUER PLINTH

PLEASE NOTE:

-IF IN WOOD, PARTS ARE VENEERED



MADISON Queen Size Bed w/ Slats

70 5/8" 63" 85 3/4"

FINISH: EUCALYPTUS PLAIN STAIN OR LACQUER	MADI-110/AB1	Grade A/B	
	MADI-110/CD1	Grade C/D & COM	
	MADI-110/E1	Grade E/ Mastrotto Leather/ Ultrasuede	
	MADI-110/SUP1	<i>Superior Leather Grade SUP</i>	
FINISH: EUCALYPTUS FRISE, TULIP WOOD, OR NATURAL ROSEWOOD, ASH BURL	MADI-110/AB2	Grade A/B	
	MADI-110/CD2	Grade C/D & COM	
	MADI-110/E2	Grade E/ Mastrotto Leather/ Ultrasuede	
	MADI-110/SUP2	<i>Superior Leather Grade SUP</i>	
FINISH: OAK OR WALNUT (5% or 30% SHEEN)	MADI-110/AB3	Grade A/B	
	MADI-110/CD3	Grade C/D & COM	
	MADI-110/E3	Grade E/ Mastrotto Leather/ Ultrasuede	
	MADI-110/SUP3	<i>Superior Leather Grade SUP</i>	
FINISH: RECONSTITUTED EBONY, OAK FUME, OR RECONSTITUTED ROSEWOOD	MADI-110/AB4	Grade A/B	
	MADI-110/CD4	Grade C/D & COM	
	MADI-110/E4	Grade E/ Mastrotto Leather/ Ultrasuede	
	MADI-110/SUP4	<i>Superior Leather Grade SUP</i>	
FINISH: NATURAL EBONY	MADI-110/AB5	Grade A/B	
	MADI-110/CD5	Grade C/D & COM	
	MADI-110/E5	Grade E/ Mastrotto Leather/ Ultrasuede	
	MADI-110/SUP5	<i>Superior Leather Grade SUP</i>	

C.O.M Requirement for 55"W plain fabric is 4 1/2yards

MADISON Bed	Description		Dimensions in Inches		
	Item No.	Finish	W	H	D

FINISH SPECIFICATION:

-UPHOLSTERED HEADBOARD WITH WOOD OR LACQUER HEADBOARD SIDES

-UPHOLSTERED BEDFRAME WITH MITERED CORNERS IN WOOD OR LACQUER

-WOOD OR LACQUER PLINTH

PLEASE NOTE:

-IF IN WOOD, PARTS ARE VENEERED



MADISON King Size Bed w/ Slats

86 5/8" 63" 85 3/4"

FINISH: EUCALYPTUS PLAIN STAIN OR LACQUER	MADI-111/AB1	Grade A/B	
	MADI-111/CD1	Grade C/D & COM	
	MADI-111/E1	Grade E/ Mastrotto Leather/ Ultrasuede	
	MADI-111/SUP1	Superior Leather Grade SUP	
FINISH: EUCALYPTUS FRISE, TULIP WOOD, OR NATURAL ROSEWOOD, ASH BURL	MADI-111/AB2	Grade A/B	
	MADI-111/CD2	Grade C/D & COM	
	MADI-111/E2	Grade E/ Mastrotto Leather/ Ultrasuede	
	MADI-111/SUP2	Superior Leather Grade SUP	
FINISH: OAK OR WALNUT (5% or 30% SHEEN)	MADI-111/AB3	Grade A/B	
	MADI-111/CD3	Grade C/D & COM	
	MADI-111/E3	Grade E/ Mastrotto Leather/ Ultrasuede	
	MADI-111/SUP3	Superior Leather Grade SUP	
FINISH: RECONSTITUTED EBONY, OAK FUME, OR RECONSTITUTED ROSEWOOD	MADI-111/AB4	Grade A/B	
	MADI-111/CD4	Grade C/D & COM	
	MADI-111/E4	Grade E/ Mastrotto Leather/ Ultrasuede	
	MADI-111/SUP4	Superior Leather Grade SUP	
FINISH: NATURAL EBONY	MADI-111/AB5	Grade A/B	
	MADI-111/CD5	Grade C/D & COM	
	MADI-111/E5	Grade E/ Mastrotto Leather/ Ultrasuede	
	MADI-111/SUP5	Superior Leather Grade SUP	

C.O.M Requirement for 55"W plain fabric is 5 1/2yards

MADISON Bed	Description		Dimensions in Inches		
	Item No.	Finish	W	H	D

FINISH SPECIFICATION:

-UPHOLSTERED HEADBOARD WITH WOOD OR LACQUER HEADBOARD SIDES

-UPHOLSTERED BEDFRAME WITH MITERED CORNERS IN WOOD OR LACQUER

-WOOD OR LACQUER PLINTH

PLEASE NOTE:

-IF IN WOOD, PARTS ARE VENEERED



MADISON California King Size Bed w/ Slats

82 5/8" 63" 89 3/4"

FINISH: EUCALYPTUS PLAIN STAIN OR LACQUER	MADI-112/AB1	Grade A/B	
	MADI-112/CD1	Grade C/D & COM	
	MADI-112/E1	Grade E/ Mastrotto Leather/ Ultrasuede	
	MADI-112/SUP1	<i>Superior Leather Grade SUP</i>	
FINISH: EUCALYPTUS FRISE, TULIP WOOD, OR NATURAL ROSEWOOD, ASH BURL	MADI-112/AB2	Grade A/B	
	MADI-112/CD2	Grade C/D & COM	
	MADI-112/E2	Grade E/ Mastrotto Leather/ Ultrasuede	
	MADI-112/SUP2	<i>Superior Leather Grade SUP</i>	
FINISH: OAK OR WALNUT (5% or 30% SHEEN)	MADI-112/AB3	Grade A/B	
	MADI-112/CD3	Grade C/D & COM	
	MADI-112/E3	Grade E/ Mastrotto Leather/ Ultrasuede	
	MADI-112/SUP3	<i>Superior Leather Grade SUP</i>	
FINISH: RECONSTITUTED EBONY, OAK FUME, OR RECONSTITUTED ROSEWOOD	MADI-112/AB4	Grade A/B	
	MADI-112/CD4	Grade C/D & COM	
	MADI-112/E4	Grade E/ Mastrotto Leather/ Ultrasuede	
	MADI-112/SUP4	<i>Superior Leather Grade SUP</i>	
FINISH: NATURAL EBONY	MADI-112/AB5	Grade A/B	
	MADI-112/CD5	Grade C/D & COM	
	MADI-112/E5	Grade E/ Mastrotto Leather/ Ultrasuede	
	MADI-112/SUP5	<i>Superior Leather Grade SUP</i>	

C.O.M Requirement for 55"W plain fabric is 5 1/2yards

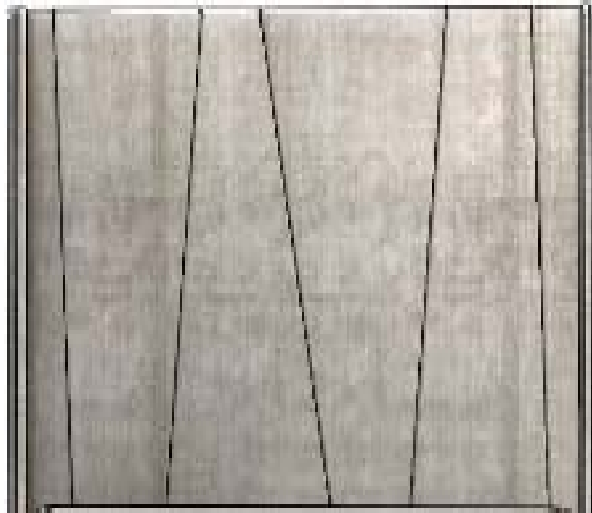
MADISON Headboard	Description		Dimensions in Inches		
	Item No.	Finish	W	H	D

FINISH SPECIFICATION:

-UPHOLSTERED HEADBOARD WITH WOOD OR LACQUER HEADBOARD SIDES

PLEASE NOTE:

-IF IN WOOD, PARTS ARE VENEERED



MADISON Queen Size Headboard ONLY

70 5/8"

63"

6"

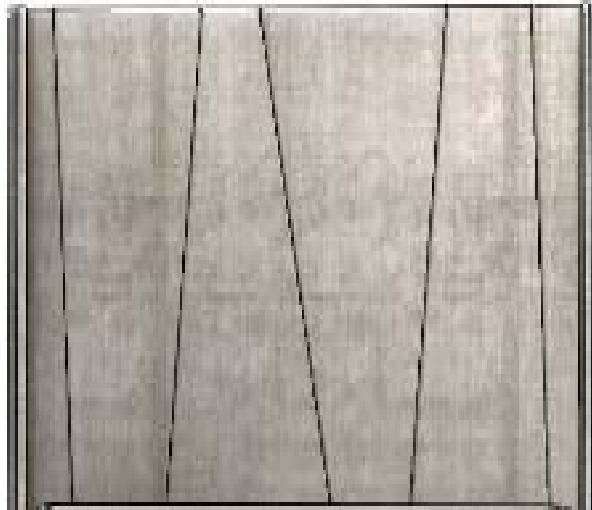
FINISH: EUCALYPTUS PLAIN STAIN OR LACQUER	MADI-116/AB1	Grade A/B	
	MADI-116/CD1	Grade C/D & COM	
	MADI-116/E1	Grade E/ Mastrotto Leather/ Ultrasuede	
	MADI-116/SUP1	<i>Superior Leather Grade SUP</i>	
FINISH: EUCALYPTUS FRISE, TULIP WOOD, OR NATURAL ROSEWOOD, ASH BURL	MADI-116/AB2	Grade A/B	
	MADI-116/CD2	Grade C/D & COM	
	MADI-116/E2	Grade E/ Mastrotto Leather/ Ultrasuede	
	MADI-116/SUP2	<i>Superior Leather Grade SUP</i>	
FINISH: OAK OR WALNUT (5% or 30% SHEEN)	MADI-116/AB3	Grade A/B	
	MADI-116/CD3	Grade C/D & COM	
	MADI-116/E3	Grade E/ Mastrotto Leather/ Ultrasuede	
	MADI-116/SUP3	<i>Superior Leather Grade SUP</i>	
FINISH: RECONSTITUTED EBONY, OAK FUME, OR RECONSTITUTED ROSEWOOD	MADI-116/AB4	Grade A/B	
	MADI-116/CD4	Grade C/D & COM	
	MADI-116/E4	Grade E/ Mastrotto Leather/ Ultrasuede	
	MADI-116/SUP4	<i>Superior Leather Grade SUP</i>	
FINISH: NATURAL EBONY	MADI-116/AB5	Grade A/B	
	MADI-116/CD5	Grade C/D & COM	
	MADI-116/E5	Grade E/ Mastrotto Leather/ Ultrasuede	
	MADI-116/SUP5	<i>Superior Leather Grade SUP</i>	

C.O.M Requirement for 55"W plain fabric is 4 yards

MADISON Headboard	Description		Dimesions in Inches		
	Item No.	Finish	W	H	D

FINISH SPECIFICATION:

-UPHOLSTERED HEADBOARD WITH WOOD OR LACQUER HEADBOARD SIDES



PLEASE NOTE :

-IF IN WOOD, PARTS ARE VENEERED

MADISON King Size Headboard ONLY

86 5/8"

63"

6"

FINISH: EUCALYPTUS PLAIN STAIN OR LACQUER	MADI-117/AB1	Grade A/B	
	MADI-117/CD1	Grade C/D & COM	
	MADI-117/E1	Grade E/ Mastrotto Leather/ Ultrasuede	
	MADI-117/SUP1	<i>Superior Leather Grade SUP</i>	
FINISH: EUCALYPTUS FRISE, TULIP WOOD, OR NATURAL ROSEWOOD, ASH BURL	MADI-117/AB2	Grade A/B	
	MADI-117/CD2	Grade C/D & COM	
	MADI-117/E2	Grade E/ Mastrotto Leather/ Ultrasuede	
	MADI-117/SUP2	<i>Superior Leather Grade SUP</i>	
FINISH: OAK OR WALNUT (5% or 30% SHEEN)	MADI-117/AB3	Grade A/B	
	MADI-117/CD3	Grade C/D & COM	
	MADI-117/E3	Grade E/ Mastrotto Leather/ Ultrasuede	
	MADI-117/SUP3	<i>Superior Leather Grade SUP</i>	
FINISH: RECONSTITUTED EBONY, OAK FUME, OR RECONSTITUTED ROSEWOOD	MADI-117/AB4	Grade A/B	
	MADI-117/CD4	Grade C/D & COM	
	MADI-117/E4	Grade E/ Mastrotto Leather/ Ultrasuede	
	MADI-117/SUP4	<i>Superior Leather Grade SUP</i>	
FINISH: NATURAL EBONY	MADI-117/AB5	Grade A/B	
	MADI-117/CD5	Grade C/D & COM	
	MADI-117/E5	Grade E/ Mastrotto Leather/ Ultrasuede	
	MADI-117/SUP5	<i>Superior Leather Grade SUP</i>	

C.O.M Requirement for 55"W plain fabric is 5 yards

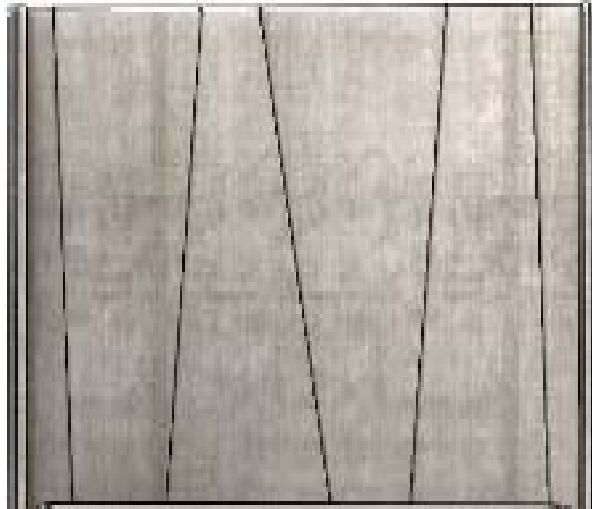
MADISON Headboard	Description		Dimensions in Inches		
	Item No.	Finish	W	H	D

FINISH SPECIFICATION:

-UPHOLSTERED HEADBOARD WITH WOOD OR LACQUER HEADBOARD SIDES

PLEASE NOTE :

-IF IN WOOD, PARTS ARE VENEERED



MADISON California King Size Headboard ONLY

82 5/8" 63" 6"

FINISH: EUCALYPTUS PLAIN STAIN OR LACQUER	MADI-118/AB1	Grade A/B	
	MADI-118/CD1	Grade C/D & COM	
	MADI-118/E1	Grade E/ Mastrotto Leather/ Ultrasuede	
	MADI-118/SUP1	<i>Superior Leather Grade SUP</i>	
FINISH: EUCALYPTUS FRISE, TULIP WOOD, OR NATURAL ROSEWOOD, ASH BURL	MADI-118/AB2	Grade A/B	
	MADI-118/CD2	Grade C/D & COM	
	MADI-118/E2	Grade E/ Mastrotto Leather/ Ultrasuede	
	MADI-118/SUP2	<i>Superior Leather Grade SUP</i>	
FINISH: OAK OR WALNUT (5% or 30% SHEEN)	MADI-118/AB3	Grade A/B	
	MADI-118/CD3	Grade C/D & COM	
	MADI-118/E3	Grade E/ Mastrotto Leather/ Ultrasuede	
	MADI-118/SUP3	<i>Superior Leather Grade SUP</i>	
FINISH: RECONSTITUTED EBONY, OAK FUME, OR RECONSTITUTED ROSEWOOD	MADI-118/AB4	Grade A/B	
	MADI-118/CD4	Grade C/D & COM	
	MADI-118/E4	Grade E/ Mastrotto Leather/ Ultrasuede	
	MADI-118/SUP4	<i>Superior Leather Grade SUP</i>	
FINISH: NATURAL EBONY	MADI-118/AB5	Grade A/B	
	MADI-118/CD5	Grade C/D & COM	
	MADI-118/E5	Grade E/ Mastrotto Leather/ Ultrasuede	
	MADI-118/SUP5	<i>Superior Leather Grade SUP</i>	

C.O.M Requirement for 55"W plain fabric is 5 yards

MADISON Bedroom

Description		Dimensions in Inches		
Item No.	Finish	W	H	D

1 Drawer Night Stand

Lacquer Top
Metal Accents

29 1/2" 25 5/8" 17"



2 vol. / 0,209 m3 / 20 Kg

EUCALYPTUS PLAIN STAIN OR LACQUER				
MADI-105/1	Polished Stainless Steel			
MADI-105/2	Polished Plated Stainless Steel Colors			
MADI-105/3	Brass			

EUCALYPTUS FRISE, ASH BURL OR NATURAL ROSEWOOD				
MADI-105/4	Polished Stainless Steel			
MADI-105/5	Polished Plated Stainless Steel Colors			
MADI-105/6	Brass			

OAK OR WALNUT (5% or 30% SHEEN)				
MADI-105/7	Polished Stainless Steel			
MADI-105/8	Polished Plated Stainless Steel Colors			
MADI-105/9	Brass			

RECONSTITUTED EBONY, OAK FUME, OR RECONSTITUTED ROSEWOOD				
MADI-105/10	Polished Stainless Steel			
MADI-105/11	Polished Plated Stainless Steel Colors			
MADI-105/12	Brass			

NATURAL EBONY				
MADI-105/13	Polished Stainless Steel			
MADI-105/14	Polished Plated Stainless Steel Colors			
MADI-105/15	Brass			

TULIP WOOD				
MADI-105/16	Polished Stainless Steel			
MADI-105/17	Polished Plated Stainless Steel Colors			
MADI-105/18	Brass			

UPCHARGE	Marble Top			
----------	------------	--	--	--

2 Drawer Night Stand

Lacquer Top
Metal Accents

29 1/2" 25 5/8" 17"



2 vol. / 0,219 m3 / 29 Kg

EUCALYPTUS PLAIN STAIN OR LACQUER				
MADI-106/1	Polished Stainless Steel			
MADI-106/2	Polished Plated Stainless Steel Colors			
MADI-106/3	Brass			

EUCALYPTUS FRISE, ASH BURL OR NATURAL ROSEWOOD				
MADI-106/4	Polished Stainless Steel			
MADI-106/5	Polished Plated Stainless Steel Colors			
MADI-106/6	Brass			

OAK OR WALNUT (5% or 30% SHEEN)				
MADI-106/7	Polished Stainless Steel			
MADI-106/8	Polished Plated Stainless Steel Colors			
MADI-106/9	Brass			

RECONSTITUTED EBONY, OAK FUME, OR RECONSTITUTED ROSEWOOD				
MADI-106/10	Polished Stainless Steel			
MADI-106/11	Polished Plated Stainless Steel Colors			
MADI-106/12	Brass			

MADISON Bedroom

Description		Dimesions in Inches		
Item No.	Finish	W	H	D



2 vol. / 0,219 m3 / 29 Kg

2 Drawer Night Stand

Lacquer Top
Metal Accents

29 1/2" 25 5/8" 17"

NATURAL EBONY	
MADI-106/13	Polished Stainless Steel
MADI-106/14	Polished Plated Stainless Steel Colors
MADI-106/15	Brass

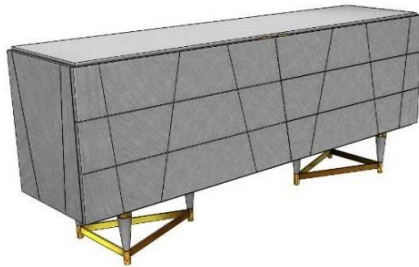
TULIP WOOD	
MADI-106/16	Polished Stainless Steel
MADI-106/17	Polished Plated Stainless Steel Colors
MADI-106/18	Brass

UPCHARGE	Marble Top
----------	------------

6 Drawer Dresser

Lacquer Top
Metal Accents

78 3/4" 34 5/8" 19 5/8"



3 vol. / 0,187 m3 / 129 Kg

EUCALYPTUS PLAIN STAIN OR LACQUER	
MADI-107/1	Polished Stainless Steel
MADI-107/2	Polished Plated Stainless Steel Colors
MADI-107/3	Brass

EUCALYPTUS FRISE, ASH BURL OR NATURAL ROSEWOOD	
MADI-107/4	Polished Stainless Steel
MADI-107/5	Polished Plated Stainless Steel Colors
MADI-107/6	Brass

OAK OR WALNUT (5% or 30% SHEEN)	
MADI-107/7	Polished Stainless Steel
MADI-107/8	Polished Plated Stainless Steel Colors
MADI-107/9	Brass

RECONSTITUTED EBONY, OAK FUME, OR RECONSTITUTED ROSEWOOD	
MADI-107/10	Polished Stainless Steel
MADI-107/11	Polished Plated Stainless Steel Colors
MADI-107/12	Brass

NATURAL EBONY	
MADI-107/13	Polished Stainless Steel
MADI-107/14	Polished Plated Stainless Steel Colors
MADI-107/15	Brass

TULIP WOOD	
MADI-107/16	Polished Stainless Steel
MADI-107/17	Polished Plated Stainless Steel Colors
MADI-107/18	Brass

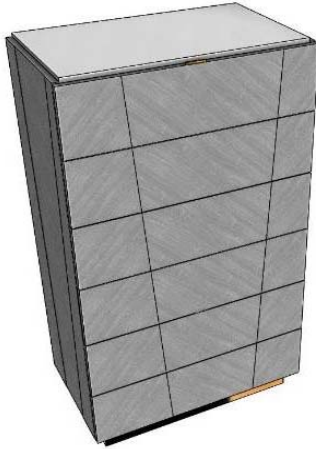
UPCHARGE	Marble Top
----------	------------

MADISON Bedroom	Description		Dimesions in Inches		
	Item No.	Finish	W	H	D

6 Drawer High Chest

Lacquer Top
Metal Accents

31 1/2" 55 1/8" 18 1/8"



2 vol. / 0,537 m3 / 75 Kg

*** RECOMMENDED THAT UNIT
BE ATTACHED TO WALL ***

EUCALYPTUS PLAIN STAIN OR LACQUER		
MADI-108/1	Polished Stainless Steel	
MADI-108/2	Polished Plated Stainless Steel Colors	
MADI-108/3	Brass	

EUCALYPTUS FRISE, ASH BURL OR NATURAL ROSEWOOD		
MADI-108/4	Polished Stainless Steel	
MADI-108/5	Polished Plated Stainless Steel Colors	
MADI-108/6	Brass	

OAK OR WALNUT (5% or 30% SHEEN)		
MADI-108/7	Polished Stainless Steel	
MADI-108/8	Polished Plated Stainless Steel Colors	
MADI-108/9	Brass	

RECONSTITUTED EBONY, OAK FUME, OR RECONSTITUTED ROSEWOOD		
MADI-108/10	Polished Stainless Steel	
MADI-108/11	Polished Plated Stainless Steel Colors	
MADI-108/12	Brass	

NATURAL EBONY		
MADI-108/13	Polished Stainless Steel	
MADI-108/14	Polished Plated Stainless Steel Colors	
MADI-108/15	Brass	

TULIP WOOD		
MADI-108/16	Polished Stainless Steel	
MADI-108/17	Polished Plated Stainless Steel Colors	
MADI-108/18	Brass	

UPCHARGE	Marble Top	
----------	------------	--

Vanity Desk

1x Door
1x Interior Drawer w/ Jewelry Box
Metal Plinth

63" 30" 17 3/4"



EUCALYPTUS PLAIN STAIN OR LACQUER		
MADI-109/1	Polished Stainless Steel	
MADI-109/2	Polished Plated Stainless Steel Colors	
MADI-109/3	Brass	

EUCALYPTUS FRISE, ASH BURL OR NATURAL ROSEWOOD		
MADI-109/4	Polished Stainless Steel	
MADI-109/5	Polished Plated Stainless Steel Colors	
MADI-109/6	Brass	

OAK OR WALNUT (5% or 30% SHEEN)		
MADI-109/7	Polished Stainless Steel	
MADI-109/8	Polished Plated Stainless Steel Colors	
MADI-109/9	Brass	

RECONSTITUTED EBONY, OAK FUME, OR RECONSTITUTED ROSEWOOD		
MADI-109/10	Polished Stainless Steel	
MADI-109/11	Polished Plated Stainless Steel Colors	
MADI-109/12	Brass	



1 vol. / 0,421 m3 / 39 Kg

MADISON Bedroom	Description		Dimesions in Inches		
	Item No.	Finish	W	H	D



Vanity Desk
 1x Door
 1x Interior Drawer w/ Jewelry Box
 Metal Plinth

63" 30" 17 3/4"

NATURAL EBONY	
MADI-109/13	Polished Stainless Steel
MADI-109/14	Polished Plated Stainless Steel Colors
MADI-109/15	Brass



1 vol. / 0,421 m3 / 39 Kg

TULIP WOOD	
MADI-109/16	Polished Stainless Steel
MADI-109/17	Polished Plated Stainless Steel Colors
MADI-109/18	Brass

UPCHARGE	Mirror
-----------------	--------

*** Mirror Dimensions: 23 5/8" x 13 3/4" x 7 1/4"***



1 vol. / 0,600 m3 / 39 Kg

Upholstered Bench
 w/ Wood Stained Legs

50 3/8" 15 3/8" 18 1/8"

MADI-101/AB	Grade A/B
MADI-101/CD	Grade C/D & COM
MADI-101/E	Grade E/ Mastrotto Leather/ Ultrasuede
MADI-101/SUP	Superior Leather Grade SUP

C.O.M Requirement for 55"W
 plain fabric is 2 yards

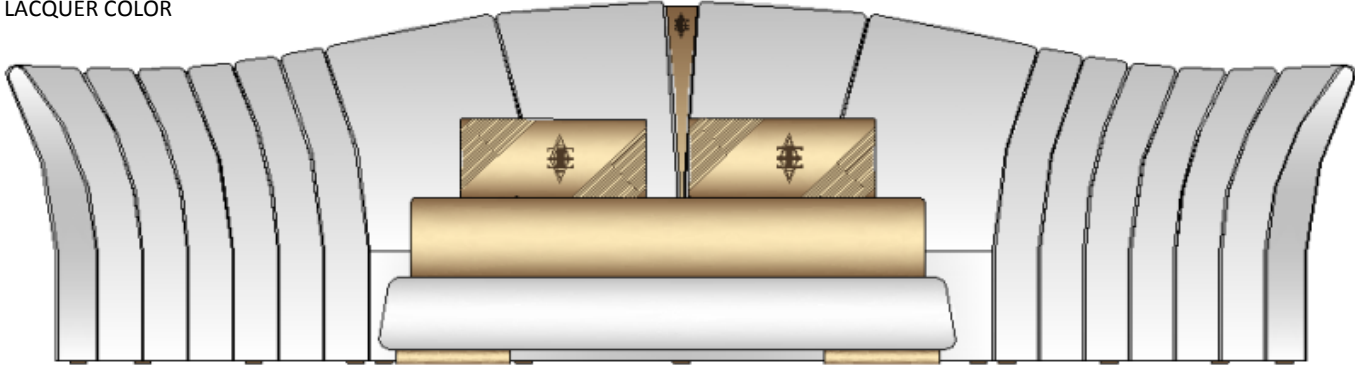
MAJESTIC Bed	Description		Dimesions in Inches		
	Item No.	Finish	W	H	D

FINISH SPECIFICATION:

- UPHOLSTERED HEADBOARD & BEDFRAME
- ALEAL LOGO IN CENTER OF HEADBOARD. CAN BE REMOVED - MUST NOTE ON ORDER
- FEET AVAILABLE IN ANY WOOD STAIN OR LACQUER COLOR

PLEASE NOTE:

- WOOD FEET ARE SOLID ASH; WHEN STAINED IN ANY OAK/WALNUT WOOD COLOR
- WOOD FEET ARE SOLID BEECHWOOD; WHEN STAINED IN ANY EUCALYPTUS COLOR



MAJESTIC Queen Size Bed w/ Slats

163 5/8" 49 1/4" 93"

FEET FINISH: WOOD (ANY SPECIES)	MAJE-110/AB1	Grade A/B	
	MAJE-110/CD1	Grade C/D & COM	
	MAJE-110/E1	Grade E/ Mastrotto Leather/ Ultrasuede	
	MAJE-110/SUP1	<i>Superior Leather Grade SUP</i>	

C.O.M Requirement for 55"W plain fabric is 9 yards

MAJESTIC King Size Bed w/ Slats

179 1/2" 49 1/4" 93"

FEET FINISH: WOOD (ANY SPECIES)	MAJE-111/AB1	Grade A/B	
	MAJE-111/CD1	Grade C/D & COM	
	MAJE-111/E1	Grade E/ Mastrotto Leather/ Ultrasuede	
	MAJE-111/SUP1	<i>Superior Leather Grade SUP</i>	

C.O.M Requirement for 55"W plain fabric is 13 1/2 yards

MAJESTIC California King Size Bed w/ Slats

175 5/8" 49 1/4" 96 7/8"

FEET FINISH: WOOD (ANY SPECIES)	MAJE-112/AB1	Grade A/B	
	MAJE-112/CD1	Grade C/D & COM	
	MAJE-112/E1	Grade E/ Mastrotto Leather/ Ultrasuede	
	MAJE-112/SUP1	<i>Superior Leather Grade SUP</i>	

C.O.M Requirement for 55"W plain fabric is 11 yards

UPCHARGE	<i>Center of headboard with leather detail</i>	
-----------------	--	--

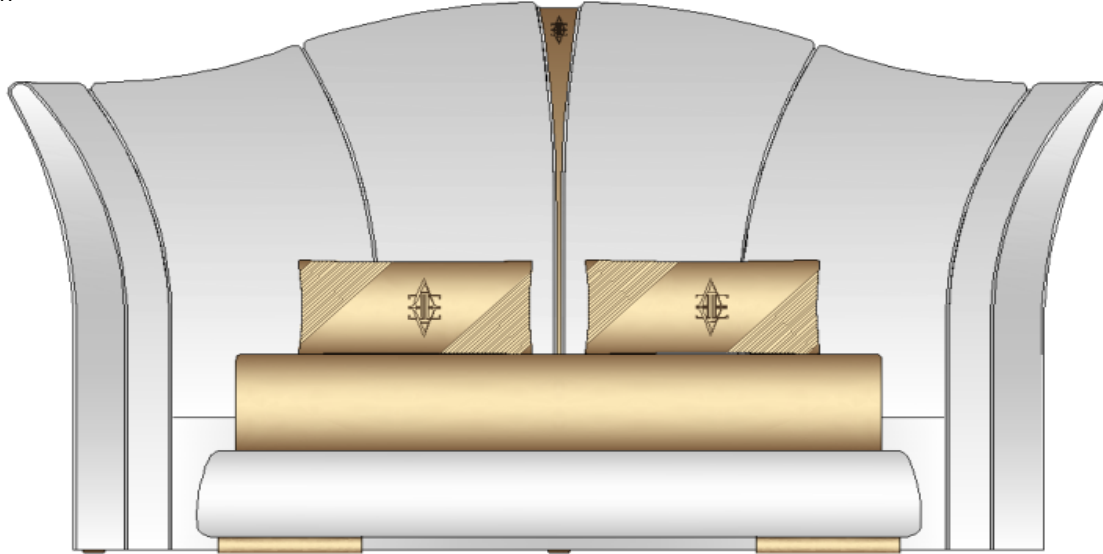
MAJESTIC B Bed	Description		Dimesions in Inches		
	Item No.	Finish	W	H	D

FINISH SPECIFICATION:

- UPHOLSTERED HEADBOARD & BEDFRAME
- ALEAL LOGO IN CENTER OF HEADBOARD. CAN BE REMOVED - MUST NOTE ON ORDER
- FEET AVAILABLE IN ANY WOOD STAIN OR LACQUER COLOR

PLEASE NOTE:

- WOOD FEET ARE SOLID ASH; WHEN STAINED IN ANY OAK/WALNUT WOOD COLOR
- WOOD FEET ARE SOLID BEECHWOOD; WHEN STAINED IN ANY EUCALYPTUS COLOR



MAJESTIC B Queen Size Bed w/ Slats

108 1/2" 67" 93"

FEET FINISH: WOOD (ANY SPECIES)	MAJE-113/AB1	Grade A/B	
	MAJE-113/CD1	Grade C/D & COM	
	MAJE-113/E1	Grade E/ Mastrotto Leather/ Ultrasuede	
	MAJE-113/SUP1	<i>Superior Leather Grade SUP</i>	

C.O.M Requirement for 55"W plain fabric is 7 yards

MAJESTIC B King Size Bed w/ Slats

124 1/8" 67" 93"

FEET FINISH: WOOD (ANY SPECIES)	MAJE-114/AB1	Grade A/B	
	MAJE-114/CD1	Grade C/D & COM	
	MAJE-114/E1	Grade E/ Mastrotto Leather/ Ultrasuede	
	MAJE-114/SUP1	<i>Superior Leather Grade SUP</i>	

C.O.M Requirement for 55"W plain fabric is 9 1/2 yards

MAJESTIC B California King Size Bed w/ Slats

120" 67" 96 7/8"

FEET FINISH: WOOD (ANY SPECIES)	MAJE-115/AB1	Grade A/B	
	MAJE-115/CD1	Grade C/D & COM	
	MAJE-115/E1	Grade E/ Mastrotto Leather/ Ultrasuede	
	MAJE-115/SUP1	<i>Superior Leather Grade SUP</i>	

C.O.M Requirement for 55"W plain fabric is 8 1/4 yards

UPCHARGE	<i>Center of headboard with leather detail</i>	
-----------------	--	--

MAJESTIC C Bed	Description		Dimesions in Inches		
	Item No.	Finish	W	H	D

FINISH SPECIFICATION:

-UPHOLSTERED HEADBOARD & BEDFRAME

-POLISHED STAINLESS STEEL HEADBOARD
DETAILS

-FEET AVAILABLE IN ANY LACQUER COLOR



MAJESTIC C Queen Size Bed w/ Slats

73" 70 7/8" 87 1/2"

MAJE-116/AB1	Grade A/B	
MAJE-116/CD1	Grade C/D & COM	
MAJE-116/E1	Grade E/ Mastrotto Leather/ Ultrasuede	
MAJE-116/SUP1	<i>Superior Leather Grade SUP</i>	

MAJESTIC C King Size Bed w/ Slats

89" 70 7/8" 87 1/2"

MAJE-117/AB1	Grade A/B	
MAJE-117/CD1	Grade C/D & COM	
MAJE-117/E1	Grade E/ Mastrotto Leather/ Ultrasuede	
MAJE-117/SUP1	<i>Superior Leather Grade SUP</i>	

MAJESTIC C California King Size Bed w/ Slats

85" 70 7/8" 91 3/8"

MAJE-118/AB1	Grade A/B	
MAJE-118/CD1	Grade C/D & COM	
MAJE-118/E1	Grade E/ Mastrotto Leather/ Ultrasuede	
MAJE-118/SUP1	<i>Superior Leather Grade SUP</i>	

UPCHARGE	Upcharge for Polished Plated Stainless Steel: Gold, Copper, Nickel Noir	
-----------------	---	--

MAJESTIC C Headboard	Description		Dimesions in Inches		
	Item No.	Finish	W	H	D

FINISH SPECIFICATION:

-UPHOLSTERED HEADBOARD

-POLISHED STAINLESS STEEL HEADBOARD
DETAILS



MAJESTIC C Queen Size Headboard ONLY

73" 70 7/8" 87 1/2"

MAJE-119/AB1	Grade A/B	
MAJE-119/CD1	Grade C/D & COM	
MAJE-119/E1	Grade E/ Mastrotto Leather/ Ultrasuede	
MAJE-119/SUP1	<i>Superior Leather Grade SUP</i>	

MAJESTIC C King Size Headboard ONLY

89" 70 7/8" 87 1/2"

MAJE-120/AB1	Grade A/B	
MAJE-120/CD1	Grade C/D & COM	
MAJE-120/E1	Grade E/ Mastrotto Leather/ Ultrasuede	
MAJE-120/SUP1	<i>Superior Leather Grade SUP</i>	

MAJESTIC C California King Size Headboard ONLY

85" 70 7/8" 91 3/8"

MAJE-121/AB1	Grade A/B	
MAJE-121/CD1	Grade C/D & COM	
MAJE-121/E1	Grade E/ Mastrotto Leather/ Ultrasuede	
MAJE-121/SUP1	<i>Superior Leather Grade SUP</i>	

UPCHARGE	Upcharge for Polished Plated Stainless Steel: Gold, Copper, Nickel Noir	
-----------------	---	--

MAJESTIC Bedroom

Description		Dimensions in Inches		
Item No.	Finish	W	H	D

2 Drawer Night Stand
Metal Feet & Handle Detail

27 1/2" 23 5/8" 17"



2 vol. / 1,167 m3 / 38 kg

NATURAL EBONY TOP & HANDLE DETAIL

MAJE-102/1	Lacquer Structure w/ Polished Stainless Steel
MAJE-102/2	Lacquer w/ Polished Plated Stainless Steel
MAJE-102/3	Lacquer w/ Brass

OAK FUME, RECON. EBONY OR EUCALYPTUS FRISE TOP & HANDLE DETAIL

MAJE-102/4	Lacquer Structure w/ Polished Stainless Steel
MAJE-102/5	Lacquer w/ Polished Plated Stainless Steel
MAJE-102/6	Lacquer w/ Brass

PLAIN EUCALYPTUS STAIN TOP & HANDLE DETAIL

MAJE-102/7	Lacquer Structure w/ Polished Stainless Steel
MAJE-102/8	Lacquer w/ Polished Plated Stainless Steel
MAJE-102/9	Lacquer w/ Brass

OAK OR WALNUT TOP & HANDLE DETAIL

MAJE-102/10	Lacquer Structure w/ Polished Stainless Steel
MAJE-102/11	Lacquer w/ Polished Plated Stainless Steel
MAJE-102/12	Lacquer w/ Brass

6 Drawer Double Dresser
Metal Feet & Handle Detail

78 3/4" 34 5/8" 19 5/8"



2 vol. / 0,844 m3 / 138 kg

NATURAL EBONY TOP & HANDLE DETAIL

MAJE-107/1	Lacquer Structure w/ Polished Stainless Steel
MAJE-107/2	Lacquer w/ Polished Plated Stainless Steel
MAJE-107/3	Lacquer w/ Brass

OAK FUME, RECON. EBONY OR EUCALYPTUS FRISE TOP & HANDLE DETAIL

MAJE-107/4	Lacquer Structure w/ Polished Stainless Steel
MAJE-107/5	Lacquer w/ Polished Plated Stainless Steel
MAJE-107/6	Lacquer w/ Brass

PLAIN EUCALYPTUS STAIN TOP & HANDLE DETAIL

MAJE-107/7	Lacquer Structure w/ Polished Stainless Steel
MAJE-107/8	Lacquer w/ Polished Plated Stainless Steel
MAJE-107/9	Lacquer w/ Brass

OAK OR WALNUT TOP & HANDLE DETAIL

MAJE-107/10	Lacquer Structure w/ Polished Stainless Steel
MAJE-107/11	Lacquer w/ Polished Plated Stainless Steel
MAJE-107/12	Lacquer w/ Brass

MAJESTIC Bedroom	Description		Dimesions in Inches		
	Item No.	Finish	W	H	D



Upholstered Bench

Lacquer Plinth

55 1/8"

16 1/2"

17 3/4"

MAJE-122/AB	Grade A/B
MAJE-122/CD	Grade C/D & COM
MAJE-122/E	Grade E/ Mastrotto Leather/ Ultrasuede
MAJE-122/SUP	<i>Superior Leather Grade SUP</i>

***Please note: Leather Option comes with seam down the middle**

1 vol. / 0,265 m3 / 40 kg

NOAH Bed	Description		Dimensions in Inches			
	Item No.	Finish	W	H	D	

FINISH SPECIFICATIONS:

-UPHOLSTERED HEADBOARD

-INNER HDBD TRIM WHEN IN WOOD IS SOLID ASH; STAINED IN ANY WOOD COLOR

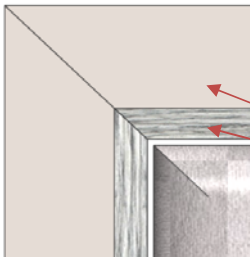
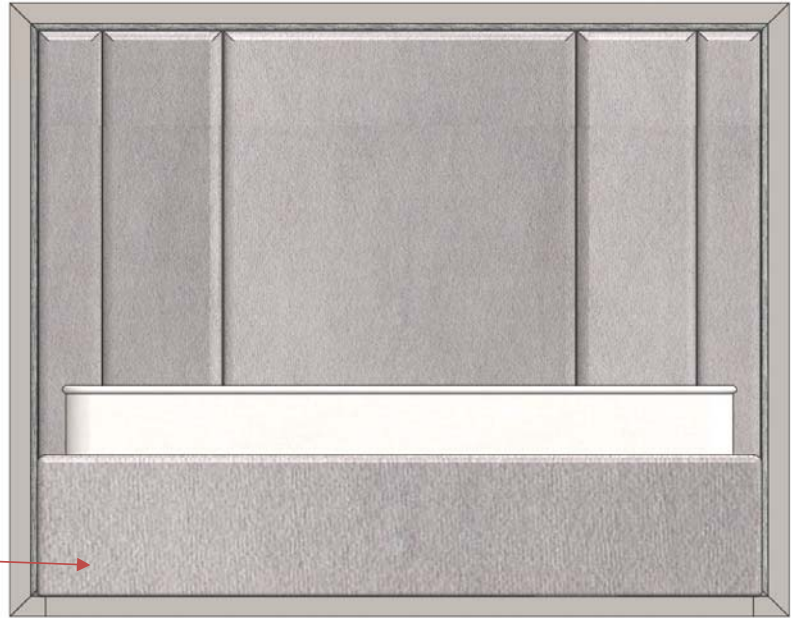
-OUTER HDBD TRIM WHEN IN WOOD IS VENEERED



PLEASE NOTE:

- LACQUER OR WOOD FEET AS SHOWN IN ABOVE IMAGE (NOT LIKE DRAWING)

- BEDFRAME AS SHOWN IN ABOVE IMAGE (NOT 'SQUARED' LIKE DRAWING)



FINISH SPECIFICATIONS:

- LACQUERED EXTERIOR HDBD TRIM(CAN BE WOOD VENEER - SAME PRICE)
- WOOD ON INNER HEADBOARD TRIM (CAN BE LACQUER - SAME PRICE)

C.O.M Requirement for 55"W plain fabric is 9 1/2 yards

NOAH Queen Size Bed w/ Slats

70 5/8" 63" 88"

NOAH-110/AB1	Grade A/B	
NOAH-110/CD1	Grade C/D & COM	
NOAH-110/E1	Grade E/ Mastrotto Leather/ Ultrasuede	
NOAH-110/SUP1	Superior Leather Grade SUP	

NOAH King Size Bed w/ Slats

86 5/8" 63" 88"

C.O.M Requirement for 55"W plain fabric is 10 1/2 yards

NOAH-111/AB1	Grade A/B	
NOAH-111/CD1	Grade C/D & COM	
NOAH-111/E1	Grade E/ Mastrotto Leather/ Ultrasuede	
NOAH-111/SUP1	Superior Leather Grade SUP	

NOAH California King Size Bed w/ Slats

82 5/8" 63" 91 7/8"

C.O.M Requirement for 55"W plain fabric is 10 1/2 yards

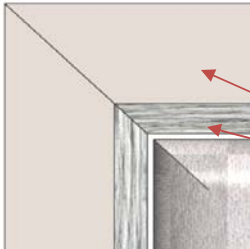
NOAH-112/AB1	Grade A/B	
NOAH-112/CD1	Grade C/D & COM	
NOAH-112/E1	Grade E/ Mastrotto Leather/ Ultrasuede	
NOAH-112/SUP1	Superior Leather Grade SUP	

5 vol. / 11.434 m3 / 174 Kg

NOAH Headboard	Description		Dimensions in Inches		
	Item No.	Finish	W	H	D

FINISH SPECIFICATIONS:

- UPHOLSTERED HEADBOARD
- INNER HDBD TRIM WHEN IN WOOD IS SOLID ASH; STAINED IN ANY WOOD COLOR
- OUTER HDBD TRIM WHEN IN WOOD IS VENEERED



PLEASE NOTE:

- LACQUERED EXTERIOR HDBD TRIM(CAN BE WOOD VENEER - SAME PRICE)
- WOOD ON INNER HEADBOARD TRIM (CAN BE LACQUER - SAME PRICE)

C.O.M Requirement for 55"W plain fabric is 6 3/4 yards

NOAH Queen Size Headboard ONLY

70 5/8" 63" 2"

NOAH-113/AB1	Grade A/B	
NOAH-113/CD1	Grade C/D & COM	
NOAH-113/E1	Grade E/ Mastrotto Leather/ Ultrasuede	
NOAH-113/SUP1	<i>Superior Leather Grade SUP</i>	

C.O.M Requirement for 55"W plain fabric is 7 3/4 yards

NOAH King Size Headboard ONLY

86 5/8" 63" 2"

NOAH-114/AB1	Grade A/B	
NOAH-114/CD1	Grade C/D & COM	
NOAH-114/E1	Grade E/ Mastrotto Leather/ Ultrasuede	
NOAH-114/SUP1	<i>Superior Leather Grade SUP</i>	

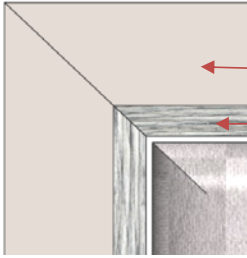
C.O.M Requirement for 55"W plain fabric is 7 3/4 yards

NOAH California King Size Headboard ONLY

82 5/8" 63" 2"

NOAH-115/AB1	Grade A/B	
NOAH-115/CD1	Grade C/D & COM	
NOAH-115/E1	Grade E/ Mastrotto Leather/ Ultrasuede	
NOAH-115/SUP1	<i>Superior Leather Grade SUP</i>	

NOAH Headboard Wing	Description		Dimesions in Inches			
	Item No.	Finish	W	H	D	

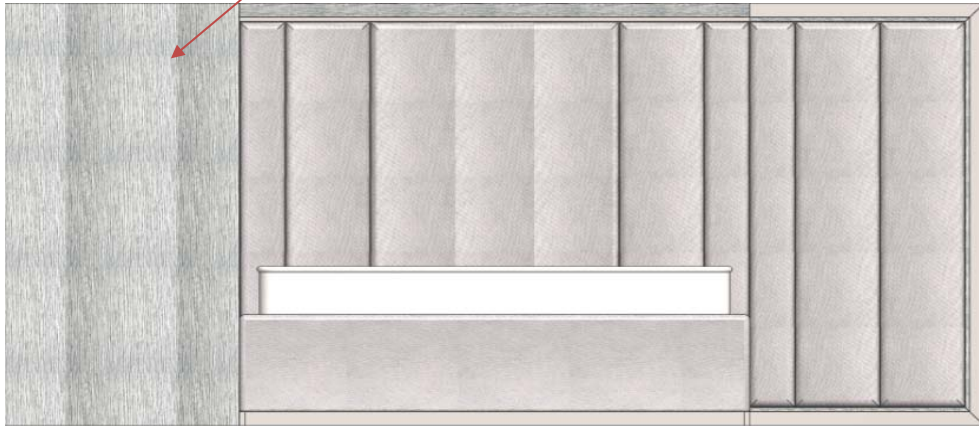


PLEASE NOTE WHEN ORDERING MIRROR OR UPHOLSTERED WINGS:

- LACQUERED EXTERIOR HDBD TRIM(WOOD IS SAME PRICE)
- WOOD ON INNER HEADBOARD TRIM (LACQUER SAME PRICE)

PLEASE NOTE WHEN ORDERING WOODEN WINGS :

- IT WILL BE ALL ONE FINISH (NO WOOD OR LACQUER TRIM)



C.O.M Requirement for 55"W plain fabric is 5 yards

NOAH Headboard Wing Finish Options			
Add below prices to Headboard/Bed Prices - Includes both wings			
	W:35"	H:63"	D:2"
NOAH-116	Upholstered		
NOAH-117	Mirrored or All Oak or All Walnut		
NOAH-118	Plain Stain Eucalyptus		
NOAH-119	Oak Fume or Reconstituted Ebony		
NOAH-120	Eucalyptus Frise		
NOAH-121	Natural Ebony		
NOAH-122	All Lacquer		

NOAH Bedroom	Description		Dimensions in Inches		
	Item No.	Finish	W	H	D



3 Drawer Night Stand

Polished Stainless Steel Handle w/ Lacquered detail

27 1/2" 21 5/8" 17 3/4"

FINISH OPTIONS		
NOAH-105/1	Oak or Walnut (5% or 30% Sheen)	
NOAH-105/2	Natural Ebony	
NOAH-105/3	Reconstituted Ebony, Oak Fume or Reconstituted Rosewood	
NOAH-105/4	Eucalyptus Frise, Ash Burl or Natural Rosewood	
NOAH-105/5	Tulip Wood	
NOAH-105/6	Eucalyptus Stain	
NOAH-105/7	All Lacquer	

OPTIONAL METAL FINISHES		
UPCHARGE	Polished Plated Stainless Steel Colors	
UPCHARGE	Brushed Brass	

6 Drawer Double Dresser

Polished Stainless Steel Handle w/ Lacquered detail

78 3/4" 32 5/8" 19 5/8"



FINISH OPTIONS		
NOAH-107/1	Oak or Walnut (5% or 30% Sheen)	
NOAH-107/2	Natural Ebony	
NOAH-107/3	Reconstituted Ebony, Oak Fume or Reconstituted Rosewood	
NOAH-107/4	Eucalyptus Frise, Ash Burl or Natural Rosewood	
NOAH-107/5	Tulip Wood	
NOAH-107/6	Eucalyptus Stain	
NOAH-107/7	All Lacquer	

OPTIONAL METAL FINISHES		
UPCHARGE	Polished Plated Stainless Steel Colors	
UPCHARGE	Brushed Brass	

6 Drawer Double Dresser

Polished Stainless Steel Handle w/ Lacquered detail

31 1/2" 55 1/8" 19 5/8"



FINISH OPTIONS		
NOAH-108/1	Oak or Walnut (5% or 30% Sheen)	
NOAH-108/2	Natural Ebony	
NOAH-108/3	Reconstituted Ebony, Oak Fume or Reconstituted Rosewood	
NOAH-108/4	Eucalyptus Frise, Ash Burl or Natural Rosewood	
NOAH-108/5	Tulip Wood	
NOAH-108/6	Eucalyptus Stain	
NOAH-108/7	All Lacquer	

OPTIONAL METAL FINISHES		
UPCHARGE	Polished Plated Stainless Steel Colors	
UPCHARGE	Brushed Brass	

PRESTIGE Bed	Description		Dimensions in Inches		
	Item No.	Finish	W	H	D

FINISH SPECIFICATION:

- UPHOLSTERED HEADBOARD & BEDFRAME
- BRUSHED BRASS HEADBOARD ACCENTS
- BRUSHED BRASS PLINTH



PRESTIGE Queen Size Bed w/ Slats

80 1/8" 57" 102 3/8"

PREST-110/AB1	Grade A/B	
PREST-110/CD1	Grade C/D & COM	
PREST-110/E1	Grade E/ Mastrotto Leather/ Ultrasuede	
PREST-110/SUP1	Superior Leather Grade SUP	

C.O.M Requirement for 55"W
plain fabric is 8 3/4 yards

PRESTIGE King Size Bed w/ Slats

96" 57" 102 3/8"

PREST-111/AB1	Grade A/B	
PREST-111/CD1	Grade C/D & COM	
PREST-111/E1	Grade E/ Mastrotto Leather/ Ultrasuede	
PREST-111/SUP1	Superior Leather Grade SUP	

C.O.M Requirement for 55"W
plain fabric is 10 yards

PRESTIGE California King Size Bed w/ Slats

92 7/8" 57" 106 1/4"

PREST-112/AB1	Grade A/B	
PREST-112/CD1	Grade C/D & COM	
PREST-112/E1	Grade E/ Mastrotto Leather/ Ultrasuede	
PREST-112/SUP1	Superior Leather Grade SUP	

C.O.M Requirement for 55"W
plain fabric is 10 yards

OPTIONAL METAL FINISHES		
DEDUCT	For Polished Stainless Steel	
DEDUCT	For Polished Plated Stainless Steel	

PRESTIGE Bedroom	Description		Dimensions in Inches		
	Item No.	Finish	W	H	D



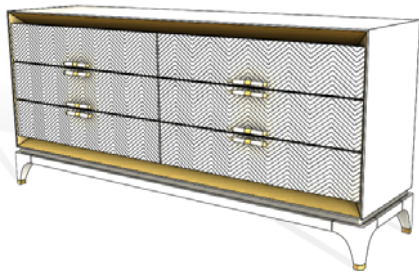
2 vol. / 0,255 m3 / 42 Kg

1 Drawer Night Stand
 Upholstered Drawer Fronts
 HG Lacquer Structure w/ Brushed Brass Accents
 29 1/2" 21 5/8" 19 1/8"

PREST-105/AB	Grade A/B
PREST-105/CD	Grade C/D & COM
PREST-105/E	Grade E/ Mastrotto Leather/ Ultrasuede
PREST-105/SUP	Superior Leather Grade SUP

OPTIONAL METAL FINISHES	
DEDUCT	For Polished Stainless Steel
DEDUCT	For Polished Plated Stainless Steel

C.O.M Requirement for 55"W
 plain fabric is 1/4 yard



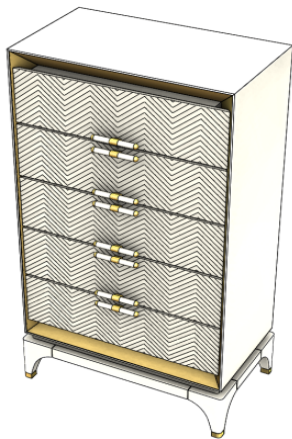
2 vol. / 1,187 m3 / 175 Kg

6 Drawer Double Dresser
 Upholstered Drawer Fronts
 HG Lacquer Structure w/ Brushed Brass Accents
 78 3/4" 39 3/8" 21 1/8"

PREST-106/AB	Grade A/B
PREST-106/CD	Grade C/D & COM
PREST-106/E	Grade E/ Mastrotto Leather/ Ultrasuede
PREST-106/SUP	Superior Leather Grade SUP

OPTIONAL METAL FINISHES	
DEDUCT	For Polished Stainless Steel
DEDUCT	For Polished Plated Stainless Steel

C.O.M Requirement for 55"W
 plain fabric is 2 1/2 yards



5 Drawer High Chest
 Upholstered Fronts
 HG Lacquer Structure w/ Brushed Brass Accents
 31 1/2" 57" 19 1/8"

PREST-107/AB	Grade A/B
PREST-107/CD	Grade C/D & COM
PREST-107/E	Grade E/ Mastrotto Leather/ Ultrasuede
PREST-107/SUP	Superior Leather Grade SUP

OPTIONAL METAL FINISHES	
DEDUCT	For Polished Stainless Steel
DEDUCT	For Polished Plated Stainless Steel

C.O.M Requirement for 55"W
 plain fabric is 1 3/4 yards

*** RECOMMENDED THAT UNIT BE ATTACHED TO WALL ***

PRESTIGE Bedroom	Description		Dimensions in Inches		
	Item No.	Finish	W	H	D



3 vol. / 1,279 m3 / 158 Kg

Vanity Desk
 6x Drawers
 Mirror
 Upholstered Fronts
 HG Lacquer Structure w/ Brushed Brass Accents

63" 29 1/2" 20 3/4"

PREST-114/AB	Grade A/B
PREST-114/CD	Grade C/D & COM
PREST-114/E	Grade E/ Mastrotto Leather/ Ultrasuede
PREST-114/SUP	Superior Leather Grade SUP

UPCHARGE	Jewelry Box
-----------------	-------------

OPTIONAL METAL FINISHES

DEDUCT	For Polished Stainless Steel
DEDUCT	For Polished Plated Stainless Steel

C.O.M Requirement for 55"W
 plain fabric is 1 3/4 yards



1 vol. / 0,190 m3 / 56 Kg

Bedroom Bench
 Brushed Brass Accents

37 1/2" 25 5/8" 63"

PREST-108/AB	Grade A/B
PREST-108/CD	Grade C/D & COM
PREST-108/E	Grade E/ Mastrotto Leather/ Ultrasuede
PREST-108/SUP	Superior Leather Grade SUP

OPTIONAL METAL FINISHES

DEDUCT	For Polished Stainless Steel
DEDUCT	For Polished Plated Stainless Steel

C.O.M Requirement for 55"W
 plain fabric is 6 1/8 yards



1 vol. / 0,090 m3 / 20 Kg

Ottoman
 Brush Brass Trim

17 3/4" 17" 17 3/4"

PREST-109/AB	Grade A/B
PREST-109/CD	Grade C/D & COM
PREST-109/E	Grade E/ Mastrotto Leather/ Ultrasuede
PREST-109/SUP	Superior Leather Grade SUP

OPTIONAL METAL FINISHES

DEDUCT	For Polished Stainless Steel
DEDUCT	For Polished Plated Stainless Steel

C.O.M Requirement for 55"W
 plain fabric is 2 yards

SCARLETT Bed	Description		Dimensions in Inches		
	Item No.	Finish	W	H	D

FINISH SPECIFICATIONS:

- UPHOLSTERED HEADBOARD WITH WOOD OR LACQUER TRIM
- HEADBOARD HAS POLISHED STAINLESS STEEL PINSTRIPE ACCENT
- UPHOLSTERED BEDFRAME
- WOOD OR LACQUER PLINTH



PLEASE NOTE :

- HEADBOARD FRAMES & BEDFRAME PLINTHS, IF IN WOOD, ARE VENEERED

SCARLETT Queen Size Bed w/ Slats

66" 60 7/8" 89 3/4"

FINISH: EUCALYPTUS FRISE, TULIP WOOD, OR NATURAL ROSEWOOD, ASH BURL	SCAR-110/AB1	Grade A/B	
	SCAR-110/CD1	Grade C/D & COM	
	SCAR-110/E1	Grade E/ Mastrotto Leather/ Ultrasuede	
	SCAR-110/SUP1	<i>Superior Leather Grade SUP</i>	
FINISH: EUCALYPTUS PLAIN STAIN	SCAR-110/AB2	Grade A/B	
	SCAR-110/CD2	Grade C/D & COM	
	SCAR-110/E2	Grade E/ Mastrotto Leather/ Ultrasuede	
	SCAR-110/SUP2	<i>Superior Leather Grade SUP</i>	
FINISH: OAK OR WALNUT (5% or 30% SHEEN)	SCAR-110/AB3	Grade A/B	
	SCAR-110/CD3	Grade C/D & COM	
	SCAR-110/E3	Grade E/ Mastrotto Leather/ Ultrasuede	
	SCAR-110/SUP3	<i>Superior Leather Grade SUP</i>	
FINISH: RECONSTITUTED EBONY, OAK FUME, OR RECONSTITUTED ROSEWOOD	SCAR-110/AB4	Grade A/B	
	SCAR-110/CD4	Grade C/D & COM	
	SCAR-110/E4	Grade E/ Mastrotto Leather/ Ultrasuede	
	SCAR-110/SUP4	<i>Superior Leather Grade SUP</i>	
FINISH: NATURAL EBONY	SCAR-110/AB5	Grade A/B	
	SCAR-110/CD5	Grade C/D & COM	
	SCAR-110/E5	Grade E/ Mastrotto Leather/ Ultrasuede	
	SCAR-110/SUP5	<i>Superior Leather Grade SUP</i>	
FINISH: LACQUER	SCAR-110/AB6	Grade A/B	
	SCAR-110/CD6	Grade C/D & COM	
	SCAR-110/E6	Grade E/ Mastrotto Leather/ Ultrasuede	
	SCAR-110/SUP6	<i>Superior Leather Grade SUP</i>	

C.O.M Requirement for 55"W plain fabric is 6 3/4 yards

SCARLETT Bed

Description		Dimensions in Inches		
Item No.	Finish	W	H	D

FINISH SPECIFICATIONS:

- UPHOLSTERED HEADBOARD WITH WOOD OR LACQUER TRIM
- HEADBOARD HAS POLISHED STAINLESS STEEL PINSTRIPE ACCENT
- UPHOLSTERED BEDFRAME
- WOOD OR LACQUER PLINTH



PLEASE NOTE:

- HEADBOARD FRAMES & BEDFRAME PLINTHS, IF IN WOOD, ARE VENEERED

SCARLETT King Size Bed w/ Slats

66" 60 7/8" 89 3/4"

FINISH: EUCALYPTUS FRISE, TULIP WOOD, OR NATURAL ROSEWOOD, ASH BURL	SCAR-111/AB1	Grade A/B	
	SCAR-111/CD1	Grade C/D & COM	
	SCAR-111/E1	Grade E/ Mastrotto Leather/ Ultrasuede	
	SCAR-111/SUP1	<i>Superior Leather Grade SUP</i>	
FINISH: EUCALYPTUS PLAIN STAIN	SCAR-111/AB2	Grade A/B	
	SCAR-111/CD2	Grade C/D & COM	
	SCAR-111/E2	Grade E/ Mastrotto Leather/ Ultrasuede	
	SCAR-111/SUP2	<i>Superior Leather Grade SUP</i>	
FINISH: OAK OR WALNUT (5% or 30% SHEEN)	SCAR-111/AB3	Grade A/B	
	SCAR-111/CD3	Grade C/D & COM	
	SCAR-111/E3	Grade E/ Mastrotto Leather/ Ultrasuede	
	SCAR-111/SUP3	<i>Superior Leather Grade SUP</i>	
FINISH: RECONSTITUTED EBONY, OAK FUME, OR RECONSTITUTED ROSEWOOD	SCAR-111/AB4	Grade A/B	
	SCAR-111/CD4	Grade C/D & COM	
	SCAR-111/E4	Grade E/ Mastrotto Leather/ Ultrasuede	
	SCAR-111/SUP4	<i>Superior Leather Grade SUP</i>	
FINISH: NATURAL EBONY	SCAR-111/AB5	Grade A/B	
	SCAR-111/CD5	Grade C/D & COM	
	SCAR-111/E5	Grade E/ Mastrotto Leather/ Ultrasuede	
	SCAR-111/SUP5	<i>Superior Leather Grade SUP</i>	
FINISH: LACQUER	SCAR-111/AB6	Grade A/B	
	SCAR-111/CD6	Grade C/D & COM	
	SCAR-111/E6	Grade E/ Mastrotto Leather/ Ultrasuede	
	SCAR-111/SUP6	<i>Superior Leather Grade SUP</i>	

SCARLETT Bed	Description		Dimensions in Inches		
	Item No.	Finish	W	H	D

FINISH SPECIFICATIONS:

- UPHOLSTERED HEADBOARD WITH WOOD OR LACQUER TRIM

-HEADBOARD HAS POLISHED STAINLESS STEEL PINSTRIPE ACCENT

-UPHOLSTERED BEDFRAME

-WOOD OR LACQUER PLINTH



PLEASE NOTE:

- HEADBOARD FRAMES & BEDFRAME PLINTHS, IF IN WOOD, ARE VENEERED

SCARLETT California King Size Bed w/ Slats

66" 60 7/8" 89 3/4"

FINISH: EUCALYPTUS FRISE, TULIP WOOD, OR NATURAL ROSEWOOD, ASH BURL	SCAR-112/AB1	Grade A/B	
	SCAR-112/CD1	Grade C/D & COM	
	SCAR-112/E1	Grade E/ Mastrotto Leather/ Ultrasuede	
	SCAR-112/SUP1	<i>Superior Leather Grade SUP</i>	
FINISH: EUCALYPTUS PLAIN STAIN	SCAR-112/AB2	Grade A/B	
	SCAR-112/CD2	Grade C/D & COM	
	SCAR-112/E2	Grade E/ Mastrotto Leather/ Ultrasuede	
	SCAR-112/SUP2	<i>Superior Leather Grade SUP</i>	
FINISH: OAK OR WALNUT (5% or 30% SHEEN)	SCAR-112/AB3	Grade A/B	
	SCAR-112/CD3	Grade C/D & COM	
	SCAR-112/E3	Grade E/ Mastrotto Leather/ Ultrasuede	
	SCAR-112/SUP3	<i>Superior Leather Grade SUP</i>	
FINISH: RECONSTITUTED EBONY, OAK FUME, OR RECONSTITUTED ROSEWOOD	SCAR-112/AB4	Grade A/B	
	SCAR-112/CD4	Grade C/D & COM	
	SCAR-112/E4	Grade E/ Mastrotto Leather/ Ultrasuede	
	SCAR-112/SUP4	<i>Superior Leather Grade SUP</i>	
FINISH: NATURAL EBONY	SCAR-112/AB5	Grade A/B	
	SCAR-112/CD5	Grade C/D & COM	
	SCAR-112/E5	Grade E/ Mastrotto Leather/ Ultrasuede	
	SCAR-112/SUP5	<i>Superior Leather Grade SUP</i>	
FINISH: LACQUER	SCAR-112/AB6	Grade A/B	
	SCAR-112/CD6	Grade C/D & COM	
	SCAR-112/E6	Grade E/ Mastrotto Leather/ Ultrasuede	
	SCAR-112/SUP6	<i>Superior Leather Grade SUP</i>	

SCARLETT Headboard

Description		Dimensions in Inches		
Item No.	Finish	W	H	D

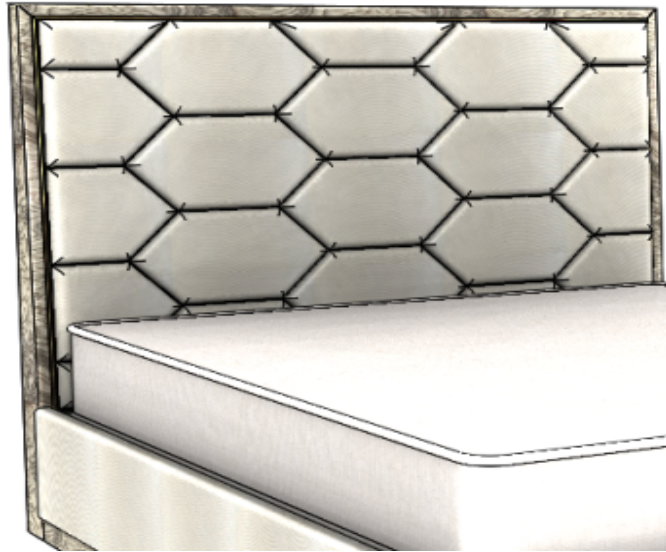
FINISH SPECIFICATIONS:

- UPHOLSTERED HEADBOARD WITH WOOD OR LACQUER TRIM

-HEADBOARD HAS POLISHED STAINLESS STEEL PINSTRIPE ACCENT

PLEASE NOTE:

- HEADBOARD FRAMES, IF IN WOOD, ARE VENEERED



SCARLETT Queen Size Headboard ONLY

		66"	60 7/8"	6"
FINISH: EUCALYPTUS FRISE, TULIP WOOD, OR NATURAL ROSEWOOD, ASH BURL	SCAR-113/AB1	Grade A/B		
	SCAR-113/CD1	Grade C/D & COM		
	SCAR-113/E1	Grade E/ Mastrotto Leather/ Ultrasuede		
	SCAR-113/SUP1	Superior Leather Grade SUP		
FINISH: EUCALYPTUS PLAIN STAIN	SCAR-113/AB2	Grade A/B		
	SCAR-113/CD2	Grade C/D & COM		
	SCAR-113/E2	Grade E/ Mastrotto Leather/ Ultrasuede		
	SCAR-113/SUP2	Superior Leather Grade SUP		
FINISH: OAK OR WALNUT (5% or 30% SHEEN)	SCAR-113/AB3	Grade A/B		
	SCAR-113/CD3	Grade C/D & COM		
	SCAR-113/E3	Grade E/ Mastrotto Leather/ Ultrasuede		
	SCAR-113/SUP3	Superior Leather Grade SUP		
FINISH: RECONSTITUTED EBONY, OAK FUME, OR RECONSTITUTED ROSEWOOD	SCAR-113/AB4	Grade A/B		
	SCAR-113/CD4	Grade C/D & COM		
	SCAR-113/E4	Grade E/ Mastrotto Leather/ Ultrasuede		
	SCAR-113/SUP4	Superior Leather Grade SUP		
FINISH: NATURAL EBONY	SCAR-113/AB5	Grade A/B		
	SCAR-113/CD5	Grade C/D & COM		
	SCAR-113/E5	Grade E/ Mastrotto Leather/ Ultrasuede		
	SCAR-113/SUP5	Superior Leather Grade SUP		
FINISH: LACQUER	SCAR-113/AB6	Grade A/B		
	SCAR-113/CD6	Grade C/D & COM		
	SCAR-113/E6	Grade E/ Mastrotto Leather/ Ultrasuede		
	SCAR-113/SUP6	Superior Leather Grade SUP		

C.O.M Requirement for 55"W plain fabric is 6 3/4 yards

SCARLETT Headboard

Description		Dimensions in Inches		
Item No.	Finish	W	H	D

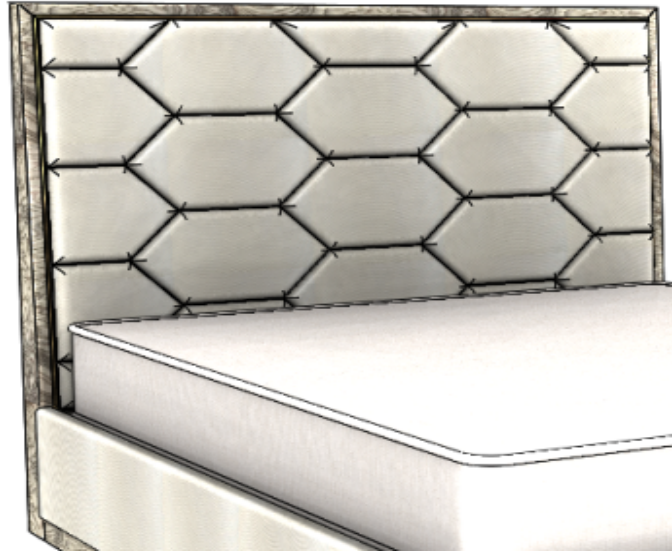
FINISH SPECIFICATIONS:

- UPHOLSTERED HEADBOARD WITH WOOD OR LACQUER TRIM

-HEADBOARD HAS POLISHED STAINLESS STEEL PINSTRIPE ACCENT

PLEASE NOTE:

- HEADBOARD FRAMES, IF IN WOOD, ARE VENEERED



SCARLETT King Size Headboard ONLY

66" 60 7/8" 6"

FINISH: EUCALYPTUS FRISE, TULIP WOOD, OR NATURAL ROSEWOOD, ASH BURL	SCAR-114/AB1	Grade A/B	
	SCAR-114/CD1	Grade C/D & COM	
	SCAR-114/E1	Grade E/ Mastrotto Leather/ Ultrasuede	
	SCAR-114/SUP1	<i>Superior Leather Grade SUP</i>	
FINISH: EUCALYPTUS PLAIN STAIN	SCAR-114/AB2	Grade A/B	
	SCAR-114/CD2	Grade C/D & COM	
	SCAR-114/E2	Grade E/ Mastrotto Leather/ Ultrasuede	
	SCAR-114/SUP2	<i>Superior Leather Grade SUP</i>	
FINISH: OAK OR WALNUT (5% or 30% SHEEN)	SCAR-114/AB3	Grade A/B	
	SCAR-114/CD3	Grade C/D & COM	
	SCAR-114/E3	Grade E/ Mastrotto Leather/ Ultrasuede	
	SCAR-114/SUP3	<i>Superior Leather Grade SUP</i>	
FINISH: RECONSTITUTED EBONY, OAK FUME, OR RECONSTITUTED ROSEWOOD	SCAR-114/AB4	Grade A/B	
	SCAR-114/CD4	Grade C/D & COM	
	SCAR-114/E4	Grade E/ Mastrotto Leather/ Ultrasuede	
	SCAR-114/SUP4	<i>Superior Leather Grade SUP</i>	
FINISH: NATURAL EBONY	SCAR-114/AB5	Grade A/B	
	SCAR-114/CD5	Grade C/D & COM	
	SCAR-114/E5	Grade E/ Mastrotto Leather/ Ultrasuede	
	SCAR-114/SUP5	<i>Superior Leather Grade SUP</i>	
FINISH: LACQUER	SCAR-114/AB6	Grade A/B	
	SCAR-114/CD6	Grade C/D & COM	
	SCAR-114/E6	Grade E/ Mastrotto Leather/ Ultrasuede	
	SCAR-114/SUP6	<i>Superior Leather Grade SUP</i>	

SCARLETT Headboard

Description		Dimensions in Inches		
Item No.	Finish	W	H	D

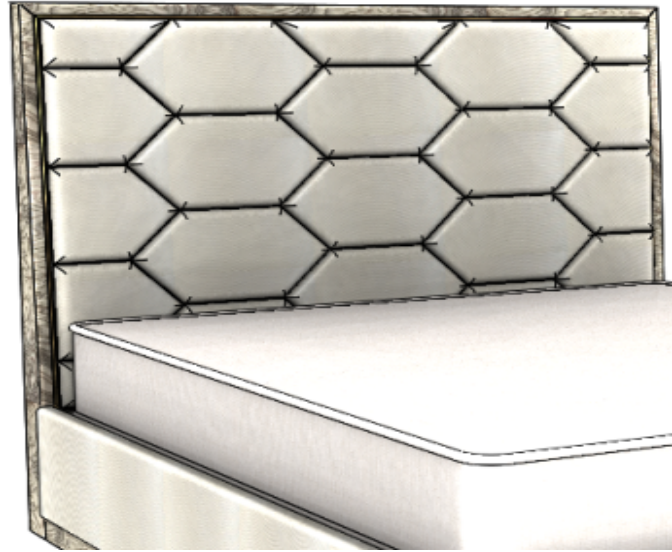
FINISH SPECIFICATIONS:

- UPHOLSTERED HEADBOARD WITH WOOD OR LACQUER TRIM

- HEADBOARD HAS POLISHED STAINLESS STEEL PINSTRIPE ACCENT

PLEASE NOTE:

- HEADBOARD FRAMES, IF IN WOOD, ARE VENEERED



SCARLETT California King Size Headboard ONLY

66" 60 7/8" 6"

FINISH: EUCALYPTUS FRISE, TULIP WOOD, OR NATURAL ROSEWOOD, ASH BURL	SCAR-115/AB1	Grade A/B	
	SCAR-115/CD1	Grade C/D & COM	
	SCAR-115/E1	Grade E/ Mastrotto Leather/ Ultrasuede	
	SCAR-115/SUP1	Superior Leather Grade SUP	
FINISH: EUCALYPTUS PLAIN STAIN	SCAR-115/AB2	Grade A/B	
	SCAR-115/CD2	Grade C/D & COM	
	SCAR-115/E2	Grade E/ Mastrotto Leather/ Ultrasuede	
	SCAR-115/SUP2	Superior Leather Grade SUP	
FINISH: OAK OR WALNUT (5% or 30% SHEEN)	SCAR-115/AB3	Grade A/B	
	SCAR-115/CD3	Grade C/D & COM	
	SCAR-115/E3	Grade E/ Mastrotto Leather/ Ultrasuede	
	SCAR-115/SUP3	Superior Leather Grade SUP	
FINISH: RECONSTITUTED EBONY, OAK FUME, OR RECONSTITUTED ROSEWOOD	SCAR-115/AB4	Grade A/B	
	SCAR-115/CD4	Grade C/D & COM	
	SCAR-115/E4	Grade E/ Mastrotto Leather/ Ultrasuede	
	SCAR-115/SUP4	Superior Leather Grade SUP	
FINISH: NATURAL EBONY	SCAR-115/AB5	Grade A/B	
	SCAR-115/CD5	Grade C/D & COM	
	SCAR-115/E5	Grade E/ Mastrotto Leather/ Ultrasuede	
	SCAR-115/SUP5	Superior Leather Grade SUP	
FINISH: LACQUER	SCAR-115/AB6	Grade A/B	
	SCAR-115/CD6	Grade C/D & COM	
	SCAR-115/E6	Grade E/ Mastrotto Leather/ Ultrasuede	
	SCAR-115/SUP6	Superior Leather Grade SUP	

SCARLETT Bedroom	Description		Dimesions in Inches		
	Item No.	Finish	W	H	D

2 Drawer Night Stand
 Lacquer Top, Feet & Interior
 Upholstered Drawer Fronts & Drawer Interior Bottom
 Polished Stainless Steel Accents
 Handles w/ Mother of Pearl & Stainless Steel Details

27 1/2" 24 1/2" 17 1/8"



C.O.M Requirement for 55"W
 plain fabric is 3/4 yards

EUCALYPTUS FRISE, ASH BURL OR NATURAL ROSEWOOD		
SCAR-105/AB1	Grade A/B	
SCAR-105/CD1	Grade C/D & COM	
SCAR-105/E1	Grade E/ Mastrotto Leather/ Ultrasuede	
SCAR-105/SUP1	Superior Leather	

RECONSTITUTED EBONY, OAK FUME, OR RECONSTITUTED ROSEWOOD		
SCAR-105/AB2	Grade A/B	
SCAR-105/CD2	Grade C/D & COM	
SCAR-105/E2	Grade E/ Mastrotto Leather/ Ultrasuede	
SCAR-105/SUP2	Superior Leather	

NATURAL EBONY		
SCAR-105/AB3	Grade A/B	
SCAR-105/CD3	Grade C/D & COM	
SCAR-105/E3	Grade E/ Mastrotto Leather/ Ultrasuede	
SCAR-105/SUP3	Superior Leather	

EUCALYPTUS PLAIN STAIN		
SCAR-105/AB4	Grade A/B	
SCAR-105/CD4	Grade C/D & COM	
SCAR-105/E4	Grade E/ Mastrotto Leather/ Ultrasuede	
SCAR-105/SUP4	Superior Leather	

LACQUER		
SCAR-105/AB5	Grade A/B	
SCAR-105/CD5	Grade C/D & COM	
SCAR-105/E5	Grade E/ Mastrotto Leather/ Ultrasuede	
SCAR-105/SUP5	Superior Leather	

OAK OR WALNUT (5% or 30% SHEEN)		
SCAR-105/AB6	Grade A/B	
SCAR-105/CD6	Grade C/D & COM	
SCAR-105/E6	Grade E/ Mastrotto Leather/ Ultrasuede	
SCAR-105/SUP6	Superior Leather	

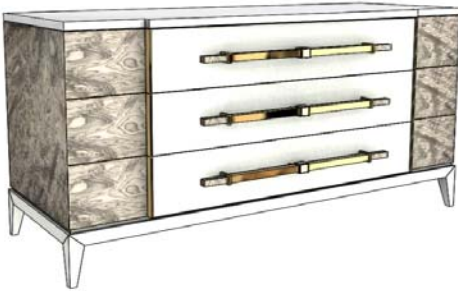
TULIP WOOD		
SCAR-105/AB7	Grade A/B	
SCAR-105/CD7	Grade C/D & COM	
SCAR-105/E7	Grade E/ Mastrotto Leather/ Ultrasuede	
SCAR-105/SUP7	Superior Leather	

OPTIONAL METAL FINISHES		
UPCHARGE	For Polished Plated Stainless Steel	
UPCHARGE	For Brass	

SCARLETT Bedroom	Description		Dimesions in Inches		
	Item No.	Finish	W	H	D

3 Drawer Dresser
 Lacquer Top, Feet & Interior
 Upholstered Drawer Fronts & Drawer Interior Bottom
 Polished Stainless Steel Accents
 Handles w/ Mother of Pearl & Stainless Steel Details

58 5/8" 33 7/8" 21 1/2"



C.O.M Requirement for 55"W plain fabric is 1 1/4 yards

EUCALYPTUS FRISE, ASH BURL OR NATURAL ROSEWOOD		
SCAR-106/AB1	Grade A/B	
SCAR-106/CD1	Grade C/D & COM	
SCAR-106/E1	Grade E/ Mastrotto Leather/ Ultrasuede	
SCAR-106/SUP1	Superior Leather	

RECONSTITUTED EBONY, OAK FUME, OR RECONSTITUTED ROSEWOOD		
SCAR-106/AB2	Grade A/B	
SCAR-106/CD2	Grade C/D & COM	
SCAR-106/E2	Grade E/ Mastrotto Leather/ Ultrasuede	
SCAR-106/SUP2	Superior Leather	

NATURAL EBONY		
SCAR-106/AB3	Grade A/B	
SCAR-106/CD3	Grade C/D & COM	
SCAR-106/E3	Grade E/ Mastrotto Leather/ Ultrasuede	
SCAR-106/SUP3	Superior Leather	

EUCALYPTUS PLAIN STAIN		
SCAR-106/AB4	Grade A/B	
SCAR-106/CD4	Grade C/D & COM	
SCAR-106/E4	Grade E/ Mastrotto Leather/ Ultrasuede	
SCAR-106/SUP4	Superior Leather	

LACQUER		
SCAR-106/AB5	Grade A/B	
SCAR-106/CD5	Grade C/D & COM	
SCAR-106/E5	Grade E/ Mastrotto Leather/ Ultrasuede	
SCAR-106/SUP5	Superior Leather	

OAK OR WALNUT (5% or 30% SHEEN)		
SCAR-106/AB6	Grade A/B	
SCAR-106/CD6	Grade C/D & COM	
SCAR-106/E6	Grade E/ Mastrotto Leather/ Ultrasuede	
SCAR-106/SUP6	Superior Leather	

TULIP WOOD		
SCAR-106/AB7	Grade A/B	
SCAR-106/CD7	Grade C/D & COM	
SCAR-106/E7	Grade E/ Mastrotto Leather/ Ultrasuede	
SCAR-106/SUP7	Superior Leather	

OPTIONAL METAL FINISHES		
UPCHARGE	For Polished Plated Stainless Steel	
UPCHARGE	For Brass	

SCARLETT Bedroom	Description		Dimensions in Inches		
	Item No.	Finish	W	H	D

5 Drawer High Chest
 Lacquer Top, Feet & Interior
 Upholstered Drawer Fronts & Drawer Interior Bottom
 Polished Stainless Steel Accents
 Handles w/ Mother of Pearl & Stainless Steel Details

58 5/8" 33 7/8" 21 1/2"



C.O.M Requirement for 55"W plain fabric is 1 1/4 yards

EUCALYPTUS FRISE, ASH BURL OR NATURAL ROSEWOOD

SCAR-107/AB1	Grade A/B	
SCAR-107/CD1	Grade C/D & COM	
SCAR-107/E1	Grade E/ Mastrotto Leather/ Ultrasuede	
SCAR-107/SUP1	Superior Leather	

RECONSTITUTED EBONY, OAK FUME, OR RECONSTITUTED ROSEWOOD

SCAR-107/AB2	Grade A/B	
SCAR-107/CD2	Grade C/D & COM	
SCAR-107/E2	Grade E/ Mastrotto Leather/ Ultrasuede	
SCAR-107/SUP2	Superior Leather	

NATURAL EBONY

SCAR-107/AB3	Grade A/B	
SCAR-107/CD3	Grade C/D & COM	
SCAR-107/E3	Grade E/ Mastrotto Leather/ Ultrasuede	
SCAR-107/SUP3	Superior Leather	

EUCALYPTUS PLAIN STAIN

SCAR-107/AB4	Grade A/B	
SCAR-107/CD4	Grade C/D & COM	
SCAR-107/E4	Grade E/ Mastrotto Leather/ Ultrasuede	
SCAR-107/SUP4	Superior Leather	

LACQUER

SCAR-107/AB5	Grade A/B	
SCAR-107/CD5	Grade C/D & COM	
SCAR-107/E5	Grade E/ Mastrotto Leather/ Ultrasuede	
SCAR-107/SUP5	Superior Leather	

OAK OR WALNUT (5% or 30% SHEEN)

SCAR-107/AB6	Grade A/B	
SCAR-107/CD6	Grade C/D & COM	
SCAR-107/E6	Grade E/ Mastrotto Leather/ Ultrasuede	
SCAR-107/SUP6	Superior Leather	

TULIP WOOD

SCAR-107/AB7	Grade A/B	
SCAR-107/CD7	Grade C/D & COM	
SCAR-107/E7	Grade E/ Mastrotto Leather/ Ultrasuede	
SCAR-107/SUP7	Superior Leather	

OPTIONAL METAL FINISHES

UPCHARGE	For Polished Plated Stainless Steel	
UPCHARGE	For Brass	

SCARLETT Bedroom	Description		Dimensions in Inches		
	Item No.	Finish	W	H	D



C.O.M Requirement for 55"W plain fabric is 1 1/2 yards

Bench
 Lacquer Feet
 Polished Stainless Steel Accents

55 1/8" 16 1/8" 17 3/4"

SCAR-108/AB6	Grade A/B
SCAR-108/CD6	Grade C/D & COM
SCAR-108/E6	Grade E/ Mastrotto Leather/ Ultrasuede
SCAR-108/SUP6	Superior Leather

OPTIONAL METAL FINISHES

UPCHARGE	For Polished Plated Stainless Steel
UPCHARGE	For Brass



Mirror

43 3/8" 43 3/8" 1 5/8"

FINISH OPTIONS

SCAR-109/1	Eucalyptus Frise, Ash Burl or Natural Rosewood
SCAR-109/2	Tulipwood
SCAR-109/3	Reconstituted Ebony, Oak Fume or Reconstituted
SCAR-109/4	Natural Ebony
SCAR-109/5	Eucalyptus Stain or Lacquer
SCAR-109/6	Oak or Walnut (5% or 30% Sheen)
SCAR-109/7	Lacquer

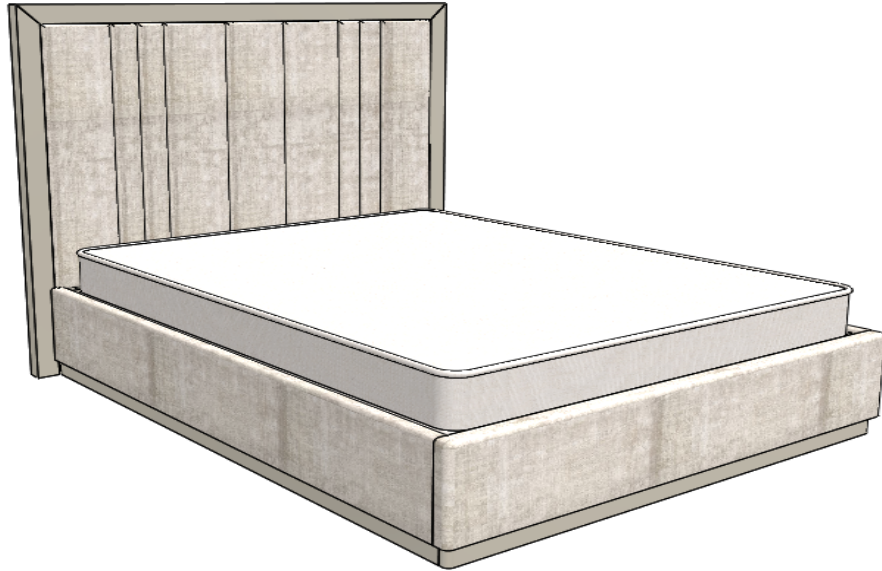
*****IT IS THE RESPONSIBILITY OF THE CUSTOMER TO ENSURE THAT THE CORRECT HARDWARE IS USED WHEN HANGING MIRRORS; MANUFACTURER CANNOT SUPPLY HARDWARE FOR EVERY TYPE OF SITUATION.*****

TIFFANY Bed	Description		Dimesions in Inches			
	Item No.	Finish	W	H	D	

FINISH SPECIFICATIONS:

- UPHOLSTERED HEADBOARD W/ LACQUER TRIM

- UPHOLSTERED BEDFRAME W/ LACQUER PLINTH



C.O.M Requirement for 55"W plain fabric is 4 3/4 yards.

TIFFANY Queen Size Bed w/ Slats

71 1/8" 63" 87 3/4"

TIFF-110/AB1	Grade A/B	
TIFF-110/CD1	Grade C/D & COM	
TIFF-110/E1	Grade E/ Mastrotto Leather/ Ultrasuede	
TIFF-110/SUP1	<i>Superior Leather Grade SUP</i>	

TIFFANY King Size Bed w/ Slats

87" 63" 87 3/4"

TIFF-111/AB1	Grade A/B	
TIFF-111/CD1	Grade C/D & COM	
TIFF-111/E1	Grade E/ Mastrotto Leather/ Ultrasuede	
TIFF-111/SUP1	<i>Superior Leather Grade SUP</i>	

TIFFANY California King Size Bed w/ Slats

83 1/8" 63" 91 3/8"

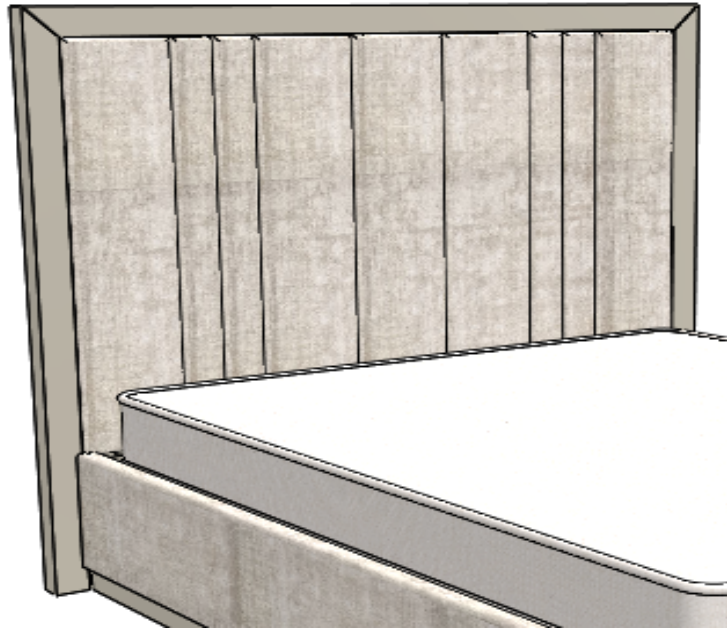
TIFF-112/AB1	Grade A/B	
TIFF-112/CD1	Grade C/D & COM	
TIFF-112/E1	Grade E/ Mastrotto Leather/ Ultrasuede	
TIFF-112/SUP1	<i>Superior Leather Grade SUP</i>	

UPCHARGE	<i>LED Strip on Headboard Top</i>	
-----------------	-----------------------------------	--

TIFFANY Headboard	Description		Dimesions in Inches		
	Item No.	Finish	W	H	D

FINISH SPECIFICATIONS:

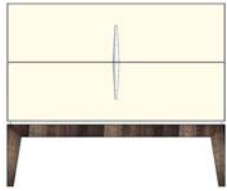
- UPHOLSTERED HEADBOARD W/ LACQUER TRIM



C.O.M Requirement for 55"W plain fabric is 4 3/4 yards.

TIFFANY Queen Size Headboard ONLY					
	71 1/8"	63"		2 3/8"	
TIFF-113/AB1	Grade A/B				
TIFF-113/CD1	Grade C/D & COM				
TIFF-113/E1	Grade E/ Mastrotto Leather/ Ultrasuede				
TIFF-113/SUP1	Superior Leather Grade SUP				
TIFFANY King Size Headboard ONLY					
	87"	63"		2 3/8"	
TIFF-114/AB1	Grade A/B				
TIFF-114/CD1	Grade C/D & COM				
TIFF-114/E1	Grade E/ Mastrotto Leather/ Ultrasuede				
TIFF-114/SUP1	Superior Leather Grade SUP				
TIFFANY California King Size Headboard ONLY					
	83 1/8"	63"		2 3/8"	
TIFF-115/AB1	Grade A/B				
TIFF-115/CD1	Grade C/D & COM				
TIFF-115/E1	Grade E/ Mastrotto Leather/ Ultrasuede				
TIFF-115/SUP1	Superior Leather Grade SUP				
UPCHARGE	LED Strip on Headboard Top				

TIFFANY Bedroom	Description		Dimensions in Inches		
	Item No.	Finish	W	H	D



2 vol. / 0,204 m3 / 38 kg

2 Drawer Night Stand
 Lacquer Structure & Fronts
 Polished Stainless Steel Accents

27 1/2" 25 5/8" 17 3/4"

TIFF-104	Oak or Walnut Feet
-----------------	--------------------



2 vol. / 0,204 m3 / 38 kg

2 Drawer Night Stand
 Lacquer Structure & Fronts
 Polished Stainless Steel Accents

27 1/2" 25 5/8" 17 3/4"

TIFF-107	Oak or Walnut Feet
-----------------	--------------------



2 vol. / 0,686 m3 / 103 kg

3 Drawer Dresser
 Lacquer Structure & Fronts
 Polished Stainless Steel Accents

59" 34 5/8" 20 1/2"

TIFF-103	Oak or Walnut Feet
-----------------	--------------------



3 Drawer / 2 Door Dresser
 Lacquer Structure & Fronts
 Polished Stainless Steel Accents

70 7/8" 34 5/8" 20 1/2"

TIFF-102	Oak or Walnut Feet
-----------------	--------------------

TIFFANY Bedroom	Description		Dimesions in Inches		
	Item No.	Finish	W	H	D



6 Drawer High Chest
 Lacquer Structure & Fronts
 Polished Stainless Steel Accents

31 1/2" 56" 18 1/8"

TIFF-108	Oak or Walnut Feet			
-----------------	--------------------	--	--	--



Bench
 Oak or Walnut Legs

51 1/4" 15 3/4" 15 3/4"

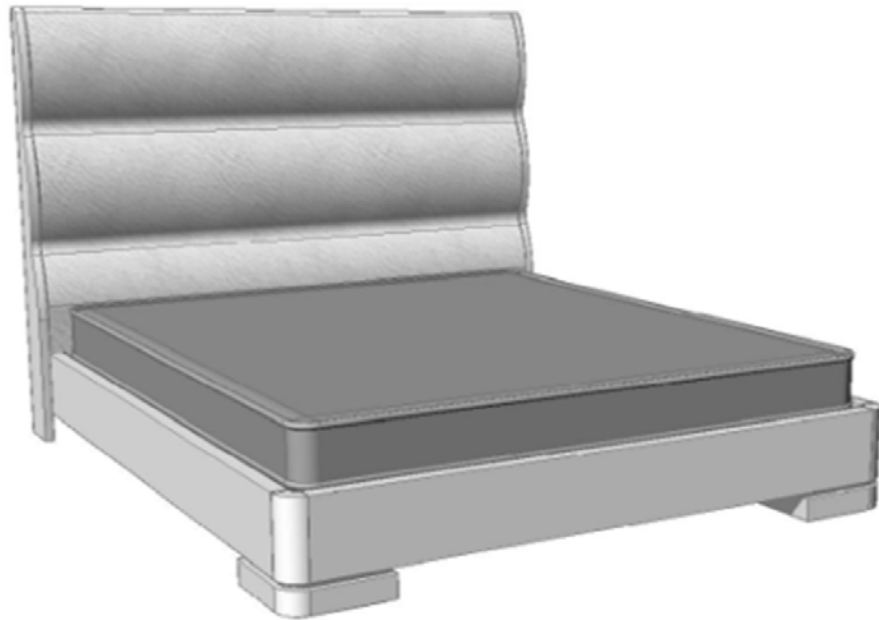
TIFF-106/AB	Grade A/B	
TIFF-106/CD	Grade C/D & COM	
TIFF-106/E	Grade E/ Mastrotto Leather/ Ultrasuede	
TIFF-106/SUP	Superior Leather Grade SUP	

2 vol. / 0,208 m3 / 46 kg

VERONA Bed	Description		Dimesions in Inches			
	Item No.	Finish	W	H	D	

FINISH SPECIFICATIONS:

- UPHOLSTERED HEADBOARD W/ LACQUER SIDES
- LACQUER BEDFRAME & FEET



C.O.M Requirement for 55"W plain fabric is 4 3/4 yards.

VERONA Queen Size Bed w/ Slats

66 1/8" 62 1/4" 89 7/8"

VERO-110/AB1	Grade A/B	
VERO-110/CD1	Grade C/D & COM	
VERO-110/E1	Grade E/ Mastrotto Leather/ Ultrasuede	
VERO-110/SUP1	<i>Superior Leather Grade SUP</i>	

4 vol. / 0,306 m3 / 101 Kg

VERONA King Size Bed w/ Slats

82" 62 1/4" 89 7/8"

VERO-111/AB1	Grade A/B	
VERO-111/CD1	Grade C/D & COM	
VERO-111/E1	Grade E/ Mastrotto Leather/ Ultrasuede	
VERO-111/SUP1	<i>Superior Leather Grade SUP</i>	

4 vol. / 0,306 m3 / 112 Kg

VERONA California King Size Bed w/ Slats

78 1/8" 62 1/4" 93 3/4"

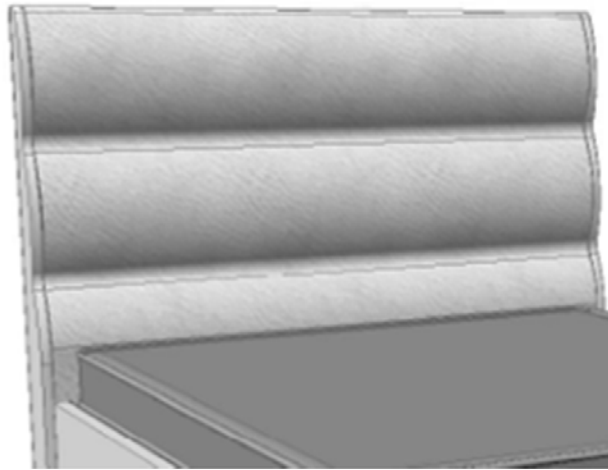
VERO-112/AB1	Grade A/B	
VERO-112/CD1	Grade C/D & COM	
VERO-112/E1	Grade E/ Mastrotto Leather/ Ultrasuede	
VERO-112/SUP1	<i>Superior Leather Grade SUP</i>	

4 vol. / 0,306 m3 / 112 Kg

VERONA Headboard	Description		Dimensions in Inches			
	Item No.	Finish	W	H	D	

FINISH SPECIFICATIONS:

- UPHOLSTERED HEADBOARD



C.O.M Requirement for 55"W plain fabric is 4 3/4 yards.

VERONA Queen Size Headboard ONLY

66 1/8" 62 1/4" 3"

VERO-113/AB1	Grade A/B	
VERO-113/CD1	Grade C/D & COM	
VERO-113/E1	Grade E/ Mastrotto Leather/ Ultrasuede	
VERO-113/SUP1	<i>Superior Leather Grade SUP</i>	

VERONA King Size Headboard ONLY

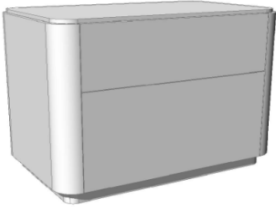
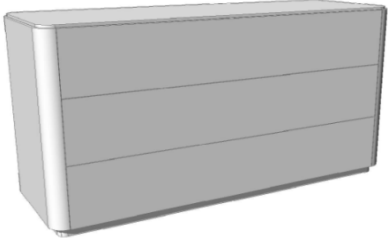
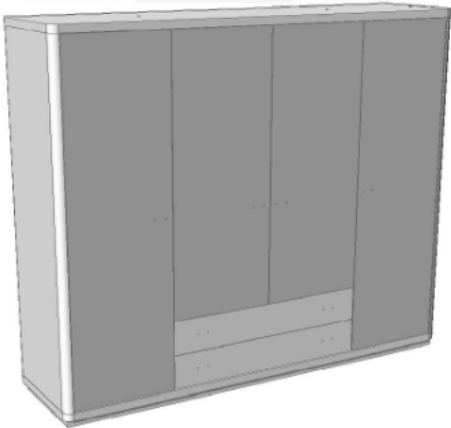
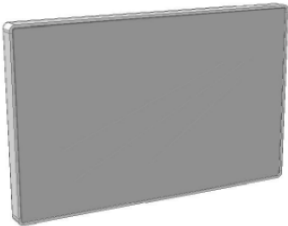
82" 62 1/4" 3"

VERO-114/AB1	Grade A/B	
VERO-114/CD1	Grade C/D & COM	
VERO-114/E1	Grade E/ Mastrotto Leather/ Ultrasuede	
VERO-114/SUP1	<i>Superior Leather Grade SUP</i>	

VERONA California King Size Headboard ONLY

78 1/8" 62 1/4" 3"

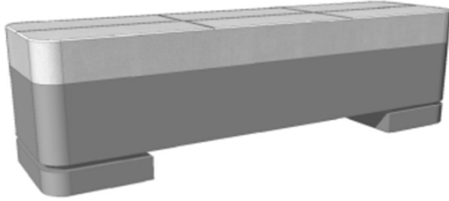
VERO-115/AB1	Grade A/B	
VERO-115/CD1	Grade C/D & COM	
VERO-115/E1	Grade E/ Mastrotto Leather/ Ultrasuede	
VERO-115/SUP1	<i>Superior Leather Grade SUP</i>	

VERONA Bedroom	Description		Dimesions in Inches		
	Item No.	Finish	W	H	D
 1 vol. / 0,015 m3 / 23 Kg	Night Stand w/ 2x Drawers w/ Swarovski Crystal Handles		27 1/2"	19 3/4"	17"
	VERO-104	All Lacquer			
 1 vol. / 0,639 m3 / 83 Kg	Dresser w/ 3x Drawers w/ Swarovski Crystal Handles		59"	32 1/4"	20 1/2"
	VERO-103	All Lacquer			
 10 vol. / 3,052 m3 / 449 Kg	Wardrobe w/ 4x Doors & 2x Drawers w/ Swarovski Crystal Handles		94 1/2"	83 1/2"	23 5/8"
	VERO-105	Lacquer & Mirrored Doors			
	*** RECOMMENDED THAT UNIT BE ATTACHED TO WALL***				
 1 vol. / 0,057 m3 / 19 Kg	Mirror		47 1/4"	31 1/2"	2 5/8"
	VERO-102	Optional Lacquer Color			

PLEASE NOTE:

IT IS THE RESPONSIBILITY OF THE CUSTOMER TO ENSURE THAT THE CORRECT HARDWARE IS USED WHEN HANGING MIRRORS; MANUFACTURER CANNOT SUPPLY HARDWARE FOR EVERY TYPE OF SITUATION.

VERONA Bedroom	Description		Dimensions in Inches		
	Item No.	Finish	W	H	D



1 vol. / 0,298 m3 / 40 Kg

Bench
Lacquer Structure

59" 17 3/4" 15 3/4"

VERO-106/AB	Grade A/B
VERO-106/CD	Grade C/D & COM
VERO-106/E	Grade E/ Mastrotto Leather/ Ultrasuede
VERO-106/SUP	<i>Superior Leather Grade SUP</i>

***Please note: Leather Option comes with seam down the middle**

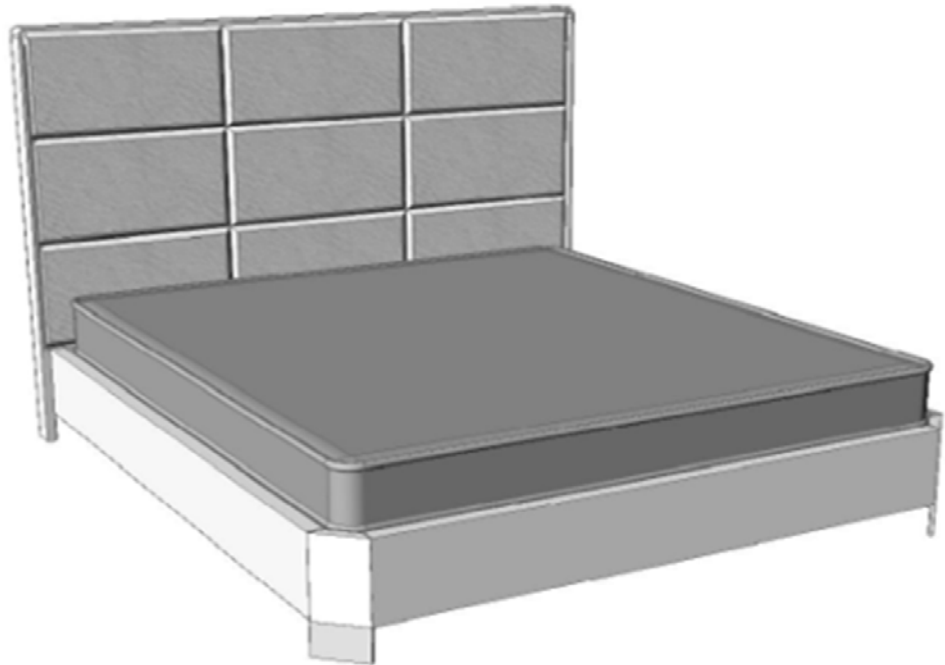
VIENA Bed	Description		Dimensions in Inches			
	Item No.	Finish	W	H	D	

FINISH SPECIFICATIONS:

- UPHOLSTERED HEADBOARD & LACQUER HEADBOARD TRIM

- LACQUER BEDFRAME

-POLISHED STAINLESS STEEL FEET



C.O.M Requirement for 55"W plain fabric is 4 3/4 yards.

VIENA Queen Size Bed w/ Slats

All Lacquer

66 3/8" 55 1/8" 86 7/8"

VIEN-110/AB1	Grade A/B	
VIEN-110/CD1	Grade C/D & COM	
VIEN-110/E1	Grade E/ Mastrotto Leather/ Ultrasuede	
VIEN-110/SUP1	Superior Leather Grade SUP	

4 vol. / 0,306m3 / 101 kg

VIENA King Size Bed w/ Slats

All Lacquer

82 1/4" 55 1/8" 86 7/8"

VIEN-111/AB1	Grade A/B	
VIEN-111/CD1	Grade C/D & COM	
VIEN-111/E1	Grade E/ Mastrotto Leather/ Ultrasuede	
VIEN-111/SUP1	Superior Leather Grade SUP	

4 vol. / 0,334 m3 / 112 kg

VIENA California King Size Bed w/ Slats

All Lacquer

78 3/8" 55 1/8" 93 3/4"

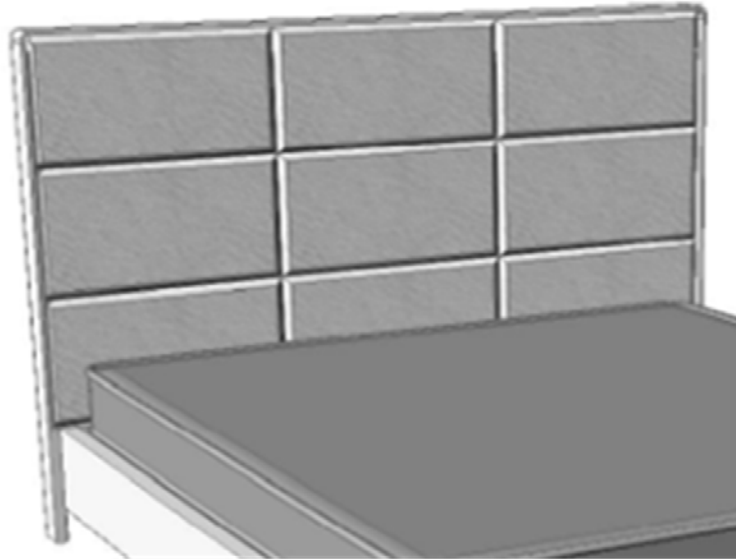
VIEN-112/AB1	Grade A/B	
VIEN-112/CD1	Grade C/D & COM	
VIEN-112/E1	Grade E/ Mastrotto Leather/ Ultrasuede	
VIEN-112/SUP1	Superior Leather Grade SUP	

4 vol. / 0,334 m3 / 112 kg

VIENA Headboard	Description		Dimesions in Inches		
	Item No.	Finish	W	H	D

FINISH SPECIFICATIONS:

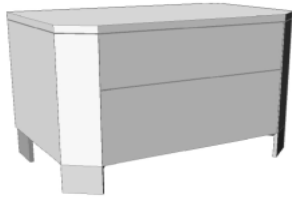
- UPHOLSTERED HEADBOARD & LACQUER HEADBOARD TRIM



C.O.M Requirement for 55"W plain fabric is 4 3/4 yards.

VIENA Queen Size Headboard ONLY			
		66 3/8"	55 1/8" 3"
VIEN-113/AB1	Grade A/B		
VIEN-113/CD1	Grade C/D & COM		
VIEN-113/E1	Grade E/ Mastrotto Leather/ Ultrasuede		
VIEN-113/SUP1	Superior Leather Grade SUP		
VIENA King Size Headboard ONLY			
		82 1/4"	55 1/8" 3"
VIEN-114/AB1	Grade A/B		
VIEN-114/CD1	Grade C/D & COM		
VIEN-114/E1	Grade E/ Mastrotto Leather/ Ultrasuede		
VIEN-114/SUP1	Superior Leather Grade SUP		
VIENA California King Size Headboard ONLY			
		78 3/8"	55 1/8" 3"
VIEN-115/AB1	Grade A/B		
VIEN-115/CD1	Grade C/D & COM		
VIEN-115/E1	Grade E/ Mastrotto Leather/ Ultrasuede		
VIEN-115/SUP1	Superior Leather Grade SUP		

VIENA Bedroom	Description		Dimensions in Inches		
	Item No.	Finish	W	H	D

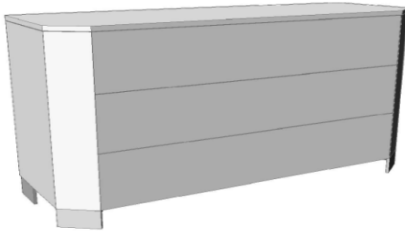


2 Drawer Night Stand
Swarovski Crystal Handles
Polished Stainless Steel Feet

27 1/2" 17 3/4" 17"

VIEN-104	Lacquer
-----------------	---------

1vol. / 0,135 m3 / 23 kg

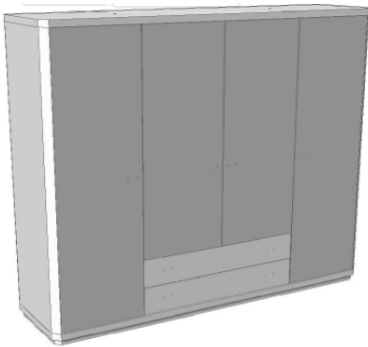


3 Drawer Dresser
Swarovski Crystal Handles
Polished Stainless Steel Feet

59" 32 1/4" 20 1/2"

VIEN-103	Lacquer
-----------------	---------

1vol. / 0,639 m3 / 83 kg



4 Door / 2 Drawer Wardrobe
Swarovski Crystal Handles
Polished Stainless Steel Feet

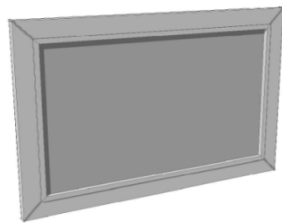
94 1/2" 83 1/2" 23 5/8"

VIEN-105	Lacquer
-----------------	---------

10 vol. / 3,052 m3 / 439 kg

*** RECOMMENDED THAT UNIT BE ATTACHED TO WALL***

VIENA Bedroom	Description		Dimensions in Inches		
	Item No.	Finish	W	H	D



Mirror

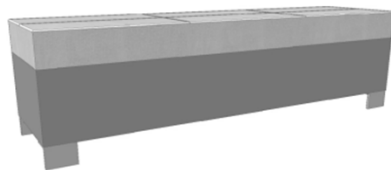
47 1/4"

32 1/4"

1 1/2"

VIEN-102	Lacquer			
-----------------	---------	--	--	--

1 vol. / 0,035 m3 / 19 kg



Bench

Lacquer Structure
Polished Stainless Steel Feet

59"

17 3/4"

15 3/4"

VIEN-106/AB	Grade A/B			
VIEN-106/CD	Grade C/D & COM			
VIEN-106/E	Grade E/ Mastrotto Leather/ Ultrasuede			
VIEN-106/SUP	<i>Superior Leather Grade SUP</i>			

1 vol. / 0,027 m3 / 40 kg

***Please note: Leather Option comes with seam down the middle**

PLEASE NOTE:

IT IS THE RESPONSIBILITY OF THE CUSTOMER TO ENSURE THAT THE CORRECT HARDWARE IS USED WHEN HANGING MIRRORS; MANUFACTURER CANNOT SUPPLY HARDWARE FOR EVERY TYPE OF SITUATION.