

# INSPIRATION COLLECTION

by ALEAL



**PLANUM**<sup>®</sup>

F U R N I T U R E

Planum, Inc  
Swedesford Corporate Center  
619 B Swedesford Road  
Frazer, PA 19355

Tel : 610/251-2120

Tel : 800/343-0042

Fax : 610/251-2290

email [info@planumfurniture.com](mailto:info@planumfurniture.com)

visit us [planumfurniture.com](http://planumfurniture.com)

# ALEAL Finishes

## LACQUER FINISHES



LC01 BLACK



LC02 WHITE



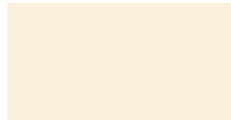
LC07 BRICK RED



LC11 TOMATO RED



LC12 SLATE GRAY



LC13 IVORY



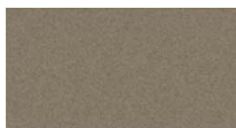
LC14 METALLIC GRAY



LC15 GRAY BEIGE



LC16 FOG GRAY



LC18 METALLIC TAUPE



LC19 CAMOUFLAGE



LC20 GUN METAL GRAY



LC21 MUSTARD YELLOW



LC22 ASH GRAY



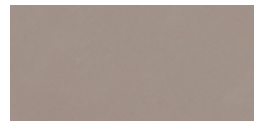
LC23 SILVER GRAY



LC26 BURGANDY



LC27 RUBY



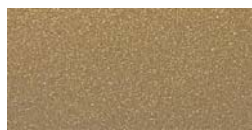
LC28 CAPPUCCINO



LC36 PEARL



LC37 PEWTER



LC38 PALOMINO



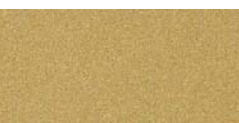
CHAMPAGNE



BRONZE



SILVER



GOLD

### Please Note:

- 1.) Custom RAL colors are acceptable, please add 10% upcharge (or minimum charge of \$260)
- 2.) Custom RAL colors need 60-120 day order delay.
- 3.) Is it the customers responsibility to send the sample of the desired color to Planum.
- 4.) Lastly all orders with custom colors will not be accepted as a return.

# ALEAL Finishes

OAK & WALNUT FINISHES ( ALWAYS 5% SHEEN)



CV01 Black Oak



CV09 Gray Beige Oak



CV02 Chocolate Oak



CV12 Ivory Oak



CV03 Slate Gray Oak



CV04 White Oak



CV11 Metallic Taupe Oak



CV05 Cherry Oak



CV10 Metallic Gray Oak



CV06 Natural Oak



CVL15 Opal Gray Oak



CVL14 Steel Gray Oak



CVL16 Smooth Chocolate Oak



Wild Oak



CVL17 Rustic Oak



NG01 Walnut

\*\*\*Please Note: Any OAK finish can be replaced with WALNUT with a 10% upcharge\*\*\*

# ALEAL Finishes

## CERAMIC FINISHES



ARENA



ARTIC WHITE



AVORIO



BARRO



BASALT BEIGE



BASALT BLACK



BELGIAN BLUE



BASALT GREY



CEMENT



IRON COPPER



IRON CORTEN



IRON GREY



IRON MOSS



LAVA



PERLA

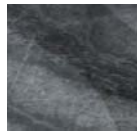
## CERAMIC FINISHES (MARBLE IMITATIONS w/ GLOSS FINISH)



SILK GRISS



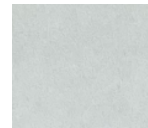
CARRARA  
POLIDO



MEDUSA



ESTUARIO  
POLIDO



CALCATA



SILK GRIS  
NATURAL



ONICE BEJE (MATTE  
FINISH)

\*\*\*Please Note: The above ceramic finishes cannot be applied to Extension tables -- they are too thick (5.6 MM)\*\*

## CERAMIC FINISHES (MARBLE IMITATIONS w/ MATTE FINISH)



THUNDER  
LIGHT



CALCATA MIX



ESTUARIO



CARRARA  
NATURAL



TEMPO



SUPREME  
NATURAL

\*\*\*Please Note: Ceramic finishes can only be applied to certain pieces -- check price list\*\*\*

# TABLE OF CONTENTS

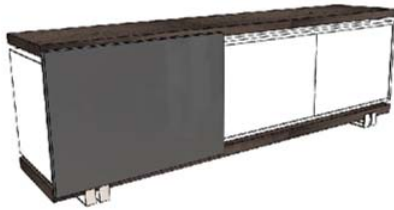
	<u>PAGE #</u>
DINING ROOM	6
MEDIA CABINETS	6

## Dining

### Description

### Dimesions in Inches

Item No.	Finish	W	H	D
----------	--------	---	---	---



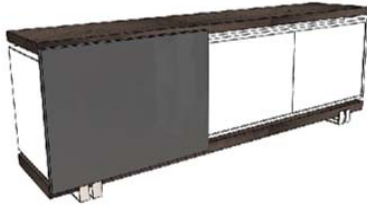
3 vol. / 1,229 m3 / 162 Kg

<b>INSPIRATION Sideboard (Big Version)</b>				
2x Doors				
2x Lacquer Shelves				
1x Tempered Glass Shelf		94 1/2"	31"	21 5/8"

<b>INSPI-800</b>	Oak Top & Plinth w/ Lacquer Body and & Iron Painted Feet
------------------	--

<b>UPCHARGE</b>	Cutlery Insert
-----------------	----------------

<b>UPCHARGE</b>	LED Lights
-----------------	------------



3 vol. / 1,102 m3 / 147 Kg

<b>INSPIRATION Sideboard (Small Version)</b>				
2x Doors				
2x Lacquer Shelves				
1x Tempered Glass Shelf		78 3/4"	31"	21 5/8"

<b>INSPI-815</b>	Oak Top & Plinth w/ Lacquer Body and & Iron Painted Feet
------------------	--

<b>UPCHARGE</b>	Cutlery Insert
-----------------	----------------

<b>UPCHARGE</b>	LED Lights
-----------------	------------



<b>INSPIRATION Square Extension Dining Table</b>				
w/ 27 1/2" Center Extension				
		55 1/8"	30"	55 1/8"

<b>INSPI-802/1</b>	All Oak
--------------------	---------

<b>INSPI-802/2</b>	All Lacquer
--------------------	-------------

<b>INSPI-802/3</b>	Glass Top w/ Oak Extensions & Feet
--------------------	------------------------------------

<b>INSPI-802/4</b>	Ceramic Top w/ Oak Extensions & Feet
--------------------	--------------------------------------

## Media Cabinets



<b>INSPIRATION Media Cabinet</b>				
2x Doors				
2x Lacquer Shelves				
1x Drawer		70 7/8"	22 1/2"	18 1/4"

<b>INSPI-816</b>	Oak Top & Plinth w/ Lacquer Body and & Iron Painted Feet
------------------	--

<b>UPCHARGE</b>	LED Lights
-----------------	------------