

ASSEMBLAGE COLLECTION

by ALEAL



PLANUM[®]
FURNITURE

Planum, Inc
Swedesford Corporate Center
619 B Swedesford Road
Frazer, PA 19355

Tel : 610/251-2120
Tel : 800/343-0042
Fax : 610/251-2290

email info@planumfurniture.com
visit us planumfurniture.com

ALEAL Finishes

LACQUER FINISHES



LC01 BLACK



LC02 WHITE



LC07 BRICK RED



LC11 TOMATO RED



LC12 SLATE GRAY



LC13 IVORY



LC14 METALLIC GRAY



LC15 GRAY BEIGE



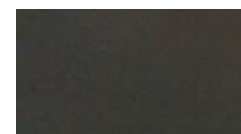
LC16 FOG GRAY



LC18 METALLIC TAUPE



LC19 CAMOUFLAGE



LC20 GUN METAL GRAY



LC21 MUSTARD YELLOW



LC22 ASH GRAY



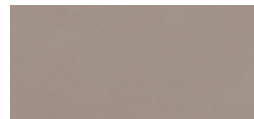
LC23 SILVER GRAY



LC26 BURGANDY



LC27 RUBY



LC28 CAPPUCCINO



LC36 PEARL



LC37 PEWTER



LC38 PALOMINO



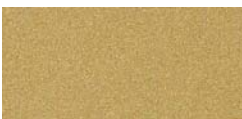
CHAMPAGNE



BRONZE



SILVER



GOLD

***CABINET INTERIORS ARE ALWAYS IN THE SAME LACQUER AS THE EXTERIOR - INTERIOR ALWAYS IN MATTE SHEEN **
OTHER COLOR OPTIONS AVAILABLE UPON REQUEST

Please Note:

- 1.) Custom RAL colors are acceptable, please add 10% upcharge (or minimum charge of \$260)
- 2.) Custom RAL colors need 60-120 day order delay.
- 3.) Is it the customers responsibility to send the sample of the desired color to Planum.
- 4.) Lastly all orders with custom colors will not be accepted as a return.

ALEAL Finishes

OAK & WALNUT FINISHES (Always 5% Sheen - Matte)



CV01 Black Oak



CV09 Gray Beige Oak



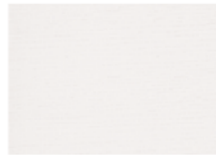
CV02 Chocolate Oak



CV12 Ivory Oak



CV03 Slate Gray Oak



CV04 White Oak



CV11 Metallic Taupe Oak



CV05 Cherry Oak



CV10 Metallic Gray Oak



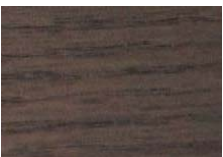
CV06 Natural Oak



CVL15 Opal Gray Oak



CVL14 Steel Gray Oak



CVL16 Smooth Chocolate Oak



Wild Oak



CVL17 Rustic Oak



NG01 Walnut

ALEAL Finish

CERAMIC FINISHES



ARENA



ARTIC WHITE



AVORIO



BARRO



BASALT BEIGE



BASALT BLACK



BELGIAN BLUE



BASALT GREY



CEMENT



IRON COPPER



IRON CORTEN



IRON GREY



IRON MOSS



LAVA



PERLA

Please Note: The above finishes can only be applied to certain pieces -- check price list

ALEAL

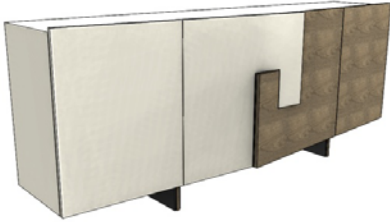
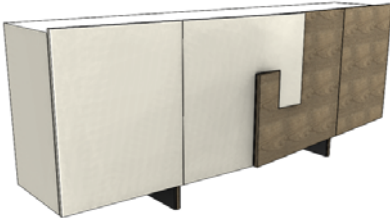


TABLE OF CONTENTS

	<u>PAGE #</u>
DINING ROOM	5
BAR UNIT	5
VITRINE	6
MEDIA CABINETS	6


Dining

Description

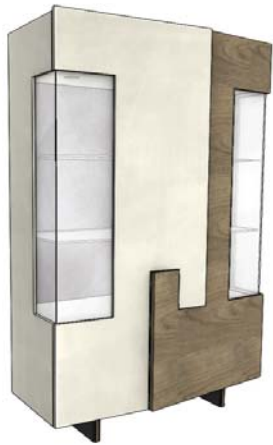
Dimensions in Inches

Item No.	Finish	W	H	D	
 <p>2 vol. / 1,187 m3 / 129 Kg</p>	ASSEMBLAGE Sideboard (Big Version) 1x Interior Drawer (with Upholstered interior and front) 3x Shelves Iron Feet w/ Oak Detail				
	ASSEM-100	Walnut or Oak w/ Lacquer Structure & Front	86 5/8"	35 1/2"	21"
	UPCHARGE	Cutlery Insert			
 <p>2 vol. / 1,170 m3 / 110 Kg</p>	ASSEMBLAGE Sideboard (Small Version) 1x Interior Drawer (with Upholstered interior and front) 3x Shelves Iron Feet w/ Oak Detail				
	ASSEM-101	Walnut or Oak w/ Lacquer Structure & Front	70 7/8"	35 1/2"	21"
	UPCHARGE	Cutlery Insert			
  <p>2 vol. / 0,610 m3 / 169 Kg</p>	ASSEMBLAGE Rectangular Extension Dining Table Oak Structure Iron Legs w/ Oak Detail				
			78 3/4"	30"	43 3/8"
				1x Center Leaf 27 1/2"	
	ASSEM-102/1	Ceramic Top & Extensions			
	ASSEM-102/2	Painted Glass Top & Extensions			
			78 3/4"	30"	43 3/8"
				1x Center Leaf 35 1/2"	
	ASSEM-103/1	Ceramic Top & Extensions			
	ASSEM-103/2	Painted Glass Top & Extensions			
			86 5/8"	30"	43 3/8"
			1x Center Leaf 27 1/2"		
ASSEM-104/1	Ceramic Top & Extensions				
ASSEM-104/2	Painted Glass Top & Extensions				
		86 5/8"	30"	43 3/8"	
			1x Center Leaf 35 1/2"		
ASSEM-105/1	Ceramic Top & Extensions				
ASSEM-105/2	Painted Glass Top & Extensions				

Bar Unit

 <p>3 vol. / 0,988 m3 / 141 Kg</p>	ASSEMBLAGE Bar w/ Mirrored Back (Right Section) w/ Upholstered Back w/ Button Tuft (Left Section) 1x Interior Drawer (with Upholstered interior and front) 2x Glass Shelves & 1x Lacquer Shelf Iron Feet w/ Oak Detail				
			47 1/4"	60 5/8"	21"
	ASSEM-106	Walnut or Oak w/ Lacquer Structure & Front			
	UPCHARGE	LED Lighting			
	UPCHARGE	Glass Rack			

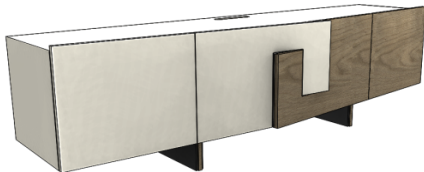
Vitrine Unit



2 vol. / 1,410 m3 / 158 Kg

Description		Dimensions in Inches		
Item No.	Finish	W	H	D
ASSEMBLAGE Vitrine				
1x Interior Drawer (with Upholstered interior and front)				
2x Glass Shelves				
Iron Feet w/ Oak Detail				
		47 1/4"	75 1/4"	21"
ASSEM-107	Walnut or Oak w/ Lacquer Structure & Front			
UPCHARGE	LED Lighting			

Media Cabinet



ASSEMBLAGE Media Cabinet (Big Version)
 1x Interior Drawer (with Upholstered interior and front)
 2x Shelves
 Iron Feet w/ Oak Detail

78 3/4"

22"

21"

ASSEM-108 | Walnut or Oak w/ Lacquer Structure & Front

ASSEMBLAGE Media Cabinet (Small Version)
 1x Interior Drawer (with Upholstered interior and front)
 2x Shelves
 Iron Feet w/ Oak Detail

63"

22"

21"

ASSEM-109 | Walnut or Oak w/ Lacquer Structure & Front

ASSEMBLAGE Wall Shelf

48 1/2"

2 3/8"

9 7/8"

ASSEM-110 | Walnut or Oak