

# TOPAZE II COLLECTION

by ALEAL



**PLANUM**<sup>®</sup>

FURNITURE

Planum, Inc  
Swedesford Corporate Center  
619 B Swedesford Road  
Frazer, PA 19355

Tel : 610/251-2120

Tel : 800/343-0042

Fax : 610/251-2290

email [info@planumfurniture.com](mailto:info@planumfurniture.com)

visit us [planumfurniture.com](http://planumfurniture.com)

# ALEAL Finishes

## LACQUER FINISHES



LC01 BLACK



LC02 WHITE



LC07 BRICK RED



LC11 TOMATO RED



LC12 SLATE GRAY



LC13 IVORY



LC14 METALLIC GRAY



LC15 GRAY BEIGE



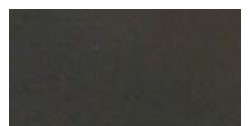
LC16 FOG GRAY



LC18 METALLIC TAUPE



LC19 CAMOUFLAGE



LC20 GUN METAL GRAY



LC21 MUSTARD YELLOW



LC22 ASH GRAY



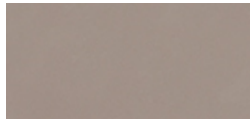
LC23 SILVER GRAY



LC26 BURGANDY



LC27 RUBY



LC28 CAPPUCCINO



LC36 PEARL



LC37 PEWTER



LC38 PALOMINO



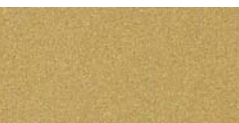
CHAMPAGNE



BRONZE



SILVER



GOLD

\*\*\*CABINET INTERIORS ARE ALWAYS IN THE SAME LACQUER COLOR AS THE EXTERIOR - INTERIOR ALWAYS IN MATTE SHEEN \*\* OTHER COLOR OPTIONS AVAILABLE UPON REQUEST

### Please Note:

- 1.) Custom RAL colors are acceptable, please add 10% upcharge (or minimum charge of \$260)
- 2.) Custom RAL colors need 60-120 day order delay.
- 3.) Is it the customers responsibility to send the sample of the desired color to Planum.
- 4.) Lastly all orders with custom colors will not be accepted as a return.

# ALEAL Finishes

OAK & WALNUT FINISHES (Always 5% Sheen - Matte)



CV01 Black Oak



CV02 Chocolate Oak



CV03 Slate Gray Oak



CV11 Metallic Taupe Oak



CV10 Metallic Gray Oak



CVL15 Opal Gray Oak



CVL16 Smooth Chocolate Oak



CVL17 Rustic Oak



Gray Eucalyptus Frise (Available in HG or Matte)



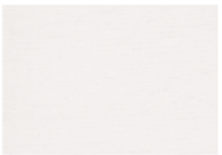
Polar Eucalyptus Frise (Available in HG or Matte)



CV09 Gray Beige Oak



CV12 Ivory Oak



CV04 White Oak



CV05 Cherry Oak



CV06 Natural Oak



CVL14 Steel Gray Oak



Wild Oak



NG01 Walnut



Espresso Eucalyptus Frise (Available in HG or Matte)

# ALEAL Finish

METAL FINISH



POLISHED STAINLESS  
STEEL

## TABLE OF CONTENTS

	<u>PAGE #</u>
DINING ROOM	5
BAR UNIT/ VITRINE	5-6
MEDIA CABINETS	6
OCCASIONAL	7

## Dining



2 vol. / 0,965 m3 / 157 Kg



2 vol. / 0,905 m3 / 130 Kg



2 vol. / 0,610 m3 / 169 Kg

### Description

### Dimensions in Inches

Item No.	Finish	W	H	D
<b>TOPAZE II Sideboard (Big Version)</b> 1x Drawer Polished Stainless Steel Base				
		86 5/8"	35 1/2"	21"
TOPA-2001/1	Walnut or Oak w/ Lacquer Structure & Front			
TOPA-2001/2	Matte Eucalyptus Frise w/ Lacquer Structure & Front			
TOPA-2001/3	High Gloss Eucalyptus Frise w/ Lacquer Structure & Front			
TOPA-2001/4	Plank Oak w/ Lacquer Structure & Front			
UPCHARGE	Cutlery Insert			
<b>TOPAZE II Sideboard (Small Version)</b> 1x Drawer Polished Stainless Steel Base				
		70 7/8"	35 1/2"	21"
TOPA-2013/1	Walnut or Oak w/ Lacquer Structure & Front			
TOPA-2013/2	Matte Eucalyptus Frise w/ Lacquer Structure & Front			
TOPA-2013/3	High Gloss Eucalyptus Frise w/ Lacquer Structure & Front			
TOPA-2013/4	Plank Oak w/ Lacquer Structure & Front			
UPCHARGE	Cutlery Insert			
<b>TOPAZE II Rectangular Dining Table</b> Built-in Satin Glass Top (optional colors)				
		78 3/4"	30"	43 3/4"
TOPA-2004/1	Walnut or Wild Oak w/ Lacquer			
TOPA-2004/2	Matte Eucalyptus Frise w/ Lacquer			
TOPA-2004/3	High Gloss Eucalyptus Frise w/ Lacquer			
TOPA-2004/4	Plank Oak w/ Lacquer			

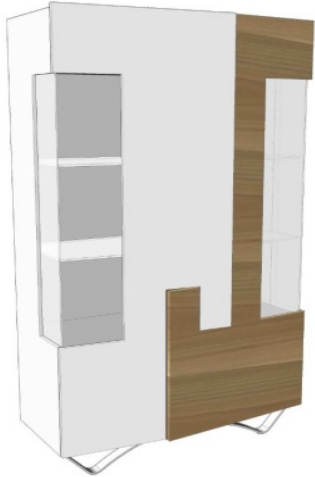
## Bar Unit



3 colis / 0,988 m3 / 141 Kg

<b>TOPAZE II Bar</b> w/ Mirrored Back 1x Interior Drawer LED Projector & Glass Rack Polished Stainless Steel Base				
		47 1/4"	60 5/8"	21"
TOPA-2003/1	Walnut or Oak w/ Lacquer Structure & Front			
TOPA-2003/2	Matte Eucalyptus Frise w/ Lacquer Structure & Front			
TOPA-2003/3	High Gloss Eucalyptus Frise w/ Lacquer Structure & Front			
TOPA-2003/4	Plank Oak w/ Lacquer Structure & Front			
UPCHARGE	LED Projector			
UPCHARGE	Glass Rack			

## Vitrine



1 vol. / 1,271 m3 / 158 Kg

Description		Dimensions in Inches		
Item No.	Finish	W	H	D
<b>TOPAZE II Vitrine</b> w/ Mirrored Back 4x Interior Shelves Polished Stainless Steel Base		47 1/4"	78"	21"
<b>TOPA-2014/1</b>	Walnut or Oak w/ Lacquer Structure & Front			
<b>TOPA-2014/2</b>	Matte Eucalyptus Frise w/ Lacquer Structure & Front			
<b>TOPA-2014/3</b>	High Gloss Eucalyptus Frise w/ Lacquer Structure & Front			
<b>TOPA-2014/4</b>	Plank Oak w/ Lacquer Structure & Front			
<b>UPCHARGE</b>	2x LED Projector			

## Media Cabinet



1 vol. / 0,599 m3 / 102 Kg

<b>TOPAZE II Media Cabinet (Big Version)</b> 1x Drawer Polished Stainless Steel Base		78 3/4"	22"	21"
<b>TOPA-2002/1</b>	Walnut or Oak w/ Lacquer Structure & Front			
<b>TOPA-2002/2</b>	Matte Eucalyptus Frise w/ Lacquer Structure & Front			
<b>TOPA-2002/3</b>	High Gloss Eucalyptus Frise w/ Lacquer Structure & Front			
<b>TOPA-2002/4</b>	Plank Oak w/ Lacquer Structure & Front			



1 vol. / 0,599 m3 / 102 Kg

<b>TOPAZE II Media Cabinet (Small Version)</b> 1x Drawer Polished Stainless Steel Base		63"	22"	21"
<b>TOPA-2015/1</b>	Walnut or Oak w/ Lacquer Structure & Front			
<b>TOPA-2015/2</b>	Matte Eucalyptus Frise w/ Lacquer Structure & Front			
<b>TOPA-2015/3</b>	High Gloss Eucalyptus Frise w/ Lacquer Structure & Front			
<b>TOPA-2015/4</b>	Plank Oak w/ Lacquer Structure & Front			

# Occasional

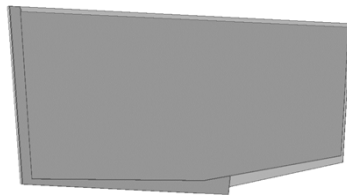
Description		Dimensions in Inches		
Item No.	Finish	W	H	D
<b>TOPAZE II Console</b> 2x Drawers Polished Stainless Steel Base		59"	32 1/4"	16 1/8"
TOPA-2009/1	Walnut or Oak w/ Lacquer			
TOPA-2009/2	Matte Eucalyptus Frise w/ Lacquer			
TOPA-2009/3	High Gloss Eucalyptus Frise w/ Lacquer			
TOPA-2009/4	Plank Oak w/ Lacquer			
<b>TOPAZE II Coffee Table</b>		43 3/8"	16 1/2"	27 1/2"
TOPA-2011/1	Walnut or Wild Oak w/ Lacquer			
TOPA-2011/2	Matte Eucalyptus Frise w/ Lacquer			
TOPA-2011/3	High Gloss Eucalyptus Frise w/ Lacquer			
TOPA-2011/4	Plank Oak w/ Lacquer			
<b>TOPAZ II Rectangular Mirror</b> Polished Stainless Steel Detail		70 7/8"	35 1/2"	1 1/4"
TOPA-2000	High Gloss Lacquer			
<b>TOPAZ II Square Mirror</b> Polished Stainless Steel Detail		39 3/8"	40 1/2"	1 1/4"
TOPA-2008	High Gloss Lacquer			



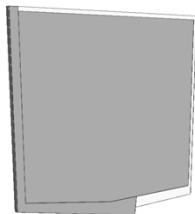
2 vol. / 0,503 m3 / 73 Kg



1 vol. / 0,405 m3 / 19 Kg



1 vol./ 0,048 m3 / 40 Kg



1 vol. / 0,030 m3 / 40 Kg

**PLEASE NOTE:** It is the responsibility of the customer to ensure that the correct hardware is used when hanging the mirror/wall manufacturer cannot supply hardware for every type of situation.