



Please also note our general details and sales information

Edition 20.08.2024

Errors and amendments excepted. Our General Terms and Conditions are effective. / WEEE-Reg.-No. DE 69718127

DESIGN

CONSTRUCTIVE DESIGN

All the materials used correspond to the requirements according to RAL-GZ 430/4.

Cantilever armchair, metal frame

Seat upholstery structure: rubber straps, cold foam VW 35, Diolen

Back upholstery structure: rubber straps, polystyrene foam, Diolen

UPHOLSTERY CASUAL / LOOSE

With casual upholsteries you are rather sitting „in the sofa“ than on it, the upholstery snuggles. A casual/loose upholstery is characterized by a smooth upholstery structure. The cover is not wavel-ess. The ridge of the covers on the seat, back and armrests as well as sitzmarks due to the model and design are typical.

BACK TENSIONING SECTIONS

All back tensioning sections are supplied as standard with the original cover.

FUNCTIONS

Cantilever with extra long spring deflection by an innovative designed metal tube frame that is connected with the comfortable seat at only one point.

FUNCTIONAL HEAD PIECE

The head piece is adjustable by a ratchet mechanism that allows different positions.



LEGS

metal frame optionally available in:

- shiny chrome
- powder-coated structural black mat
- stainless steel (honed) against extra charge see price sheet

from the left to the right:



CONTRAST STITCHING

The seam construction diagram and the thread size are defined due to the model.

With leather covers the production is carried out either **with contrast stitching** or with a **thread (tone on tone)** matching the leather in terms of colour. Therefore in such cases the finish must be chosen.

By processing with contrast stitching **the best matching colour of the contrast stitching** was chosen for each leather colour. It will be worked automatically while a certain colour of contrast stitching is not explicitly indicated on the order. More for it in the general sales information.

The below displayed combinations of seam colour and leather colour are recommended, exemplary assignments of the 6 available colours of contrast stitching.



LIGHT GREY 0321



BEIGE 1222



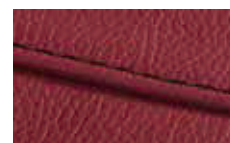
NOUGAT 0281



GREY 0415



DARK BROWN 1002



BLACK 4000



Unfortunately with fabric- and microfiber covers contrast stitching is not possible.

Exception fabric 13-BISON:

With this fabric it can be chosen between a production with contrast stitching or with a thread matching the fabric in terms of colour (tone-on-tone).

Please note: This cantilever can be weighted up to maximum 125 kg body weight. A permanent functioning of this upholstery can only be warranted by correct use. Avoid exceeding effort (e.g. by sitting down), don't weight onesided.



Please also note our general details and sales information

Edition 20.08.2024

Errors and amendments excepted. Our General Terms and Conditions are effective.

SEAM

Depending on the model, the seam on leather covers may be different from fabric covers, especially on fitted items. Decorative leather seam (as felled seams or double seams) may be omitted depending on the model according to suitability of the fabric covering material.

COVERING MATERIALS

You may find the information concerning the specific properties of the covering materials on the sample labels.

INDICATIONS OF DIMENSIONS AND REQUIREMENTS

All the values given are approximate values: dimensions in centimetres, material requirements in metres, leather requirements in square metres.

ORDER CHECK LIST

Please pay attention to the following issues respectively to complete specifications when ordering:

- **covering material**
- with leather covers: production **with or without contrast stitching**
- **finish** of metal frame



Errors and amendments excepted. Our General Terms and Conditions are effective.

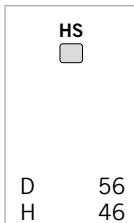
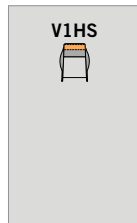
I CANTILEVERS



**Cantilever
armchair**

**Cantilever
stool**

H 104
D min. 99
D max. 104
SD 54
SH 48



W 80

62

Requirement 2,50 0,80

COM

10

13

16

20

25

30

45

FABRIC

Requirement 4,00 1,40

COM

X

A

B

C

D

E

F

G

Extra charge for metal frame in stainless steel:

LEATHER