

MADISON COLLECTION

BY ALEAL



PLANUM[®]
FURNITURE

Swedesford Corporate Center
619 B Swedesford Road
Frazer, PA 19355

Email: info@planumfurniture.com
Website: planumfurniture.com

Tel : 610/251-2120
Tel : 800/343-0042
Fax : 610/251-2290

ALEAL Finishes

LACQUER FINISHES



LC01 BLACK



LC02 WHITE



LC07 BRICK RED



LC11 TOMATO RED



LC12 SLATE GRAY



LC13 IVORY



LC14 METALLIC
GRAY



LC15 GRAY BEIGE



LC16 FOG GRAY



LC18 METALLIC
TAUPE



LC19 CAMOUFLAGE



LC20 GUN
METAL GRAY



LC21 MUSTARD
YELLOW



LC22 ASH GRAY



LC23 SILVER
GRAY



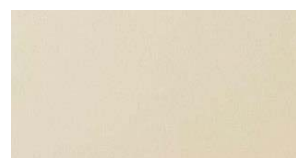
LC26 BURGANDY



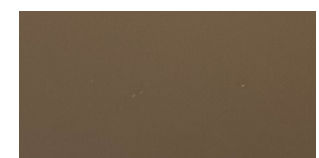
LC27 RUBY



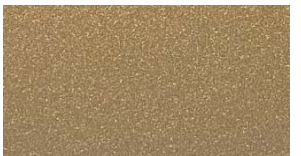
LC28 CAPPUCCINO



LC36 PEARL



LC37 PEWTER



LC38 PALOMINO



LC39 PETROL BLUE



BRONZE



SILVER



GOLD



CHAMPAGNE

PLEASE NOTE ABOVE LACQUERS ARE AVAILABLE IN THE BELOW SHEENS:

5% MATTE OR 30% SEMIGLOSS - USE MATTE PRICING

100% SHEEN - USE HIGH GLOSS PRICING

ALEAL Finishes

OAK & WALNUT FINISHES



BLACK OAK CV01



CHOCOLATE OAK
CV02



SLATE GRAY OAK
CV03



IVORY OAK CV12



METALLIC TAUPE
OAK CV11



METALLIC GRAY
OAK CV10



OPAL GRAY OAK
CVL15



GRAY BEIGE OAK
CV09



WHITE OAK CV04



CHERRY OAK CV05



NATURAL OAK CV06



STEEL GRAY OAK
CVL14



SMOOTH CHOCOALTE
OAK CVL16



CVL19



RUSTIC OAK CVL17



WILD OAK CV06



WALNUT NG01

PLEASE NOTE ABOVE WOODS ARE AVAILABLE IN THE BELOW SHEENS:

5% MATTE OR 30% SEMIGLOSS - USE MATTE PRICING

*THEY ARE NOT AVAILABLE IN 100% SHEEN HIGH GLOSS**

ALEAL Finishes

EBONY



RECONSTITUTED
EBONY



NATURAL EBONY

ROSEWOOD



RECONSTITUTED
ROSEWOOD

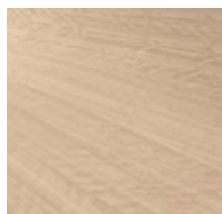


NATURAL
ROSEWOOD

EUCALYPTUS FRISE



GREY EUCALYPTUS

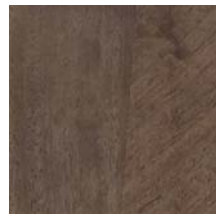


POLAR EUCALYPTUS



ESPRESSO EUCALYPTUS

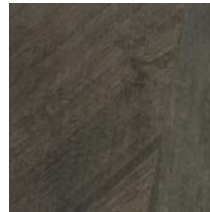
PLAIN STAINED EUCALYPTUS



SOFT PLUM



ARGENTO



SOFT GREY



TOFFEE

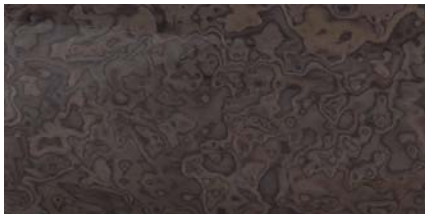
TULP WOOD



OAK FUME



ASH BURL



BURGANDY



LIGHT GRAY

PLEASE NOTE ABOVE WOODS ARE AVAILABLE IN THE BELOW SHEENS:

5% MATTE OR 30% SEMIGLOSS - USE MATTE PRICING

100% SHEEN - USE HIGH GLOSS PRICING

ALEAL Finishes

STAINLESS STEEL



POLISHED STAINLESS
STEEL



BRUSHED STAINLESS
STEEL

BRASS



BRUSHED BRASS



BRUSHED ANTIQUE BRASS

POLISHED PLATED STAINLESS STEEL



COPPER



NICKEL NOIR



GOLD

MARBLE FINISHES



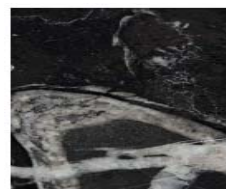
M06



M07



M08



M09



M10

ALEAL

TABLE OF CONTENTS

	<u>PAGE #</u>
BEDROOM	7-16
DINING	17-21
SIDEBOARD	22-23
VITRINE	24-25
BAR	26
MEDIA	27-28
BOOK SHELF	28-29
OCCASIONAL	29-33

BED	Description		Dimensions in Inches		
	Item No.	Finish	W	H	D

FINISH SPECIFICATION:

-UPHOLSTERED HEADBOARD WITH WOOD OR LACQUER HEADBOARD SIDES

-UPHOLSTERED BEDFRAME WITH MITERED CORNERS IN WOOD OR LACQUER

-WOOD OR LACQUER PLINTH

PLEASE NOTE:

-IF IN WOOD, PARTS ARE VENEERED



MADISON Queen Size Bed w/ Slats

70 5/8" 63" 85 3/4"

FINISH: EUCALYPTUS PLAIN STAIN OR LACQUER	MADI-110/AB1	Grade A/B	
	MADI-110/CD1	Grade C/D & COM	
	MADI-110/E1	Grade E/ Mastrotto Leather/ Ultrasuede	
	MADI-110/SUP1	<i>Superior Leather Grade SUP</i>	
FINISH: EUCALYPTUS FRISE, TULIP WOOD, OR NATURAL ROSEWOOD, ASH BURL	MADI-110/AB2	Grade A/B	
	MADI-110/CD2	Grade C/D & COM	
	MADI-110/E2	Grade E/ Mastrotto Leather/ Ultrasuede	
	MADI-110/SUP2	<i>Superior Leather Grade SUP</i>	
FINISH: OAK OR WALNUT (5% or 30% SHEEN)	MADI-110/AB3	Grade A/B	
	MADI-110/CD3	Grade C/D & COM	
	MADI-110/E3	Grade E/ Mastrotto Leather/ Ultrasuede	
	MADI-110/SUP3	<i>Superior Leather Grade SUP</i>	
FINISH: RECONSTITUTED EBONY, OAK FUME, OR RECONSTITUTED ROSEWOOD	MADI-110/AB4	Grade A/B	
	MADI-110/CD4	Grade C/D & COM	
	MADI-110/E4	Grade E/ Mastrotto Leather/ Ultrasuede	
	MADI-110/SUP4	<i>Superior Leather Grade SUP</i>	
FINISH: NATURAL EBONY	MADI-110/AB5	Grade A/B	
	MADI-110/CD5	Grade C/D & COM	
	MADI-110/E5	Grade E/ Mastrotto Leather/ Ultrasuede	
	MADI-110/SUP5	<i>Superior Leather Grade SUP</i>	

C.O.M Requirement for 55"W plain fabric is 4 1/2yards

BED	Description		Dimensions in Inches		
	Item No.	Finish	W	H	D

FINISH SPECIFICATION:

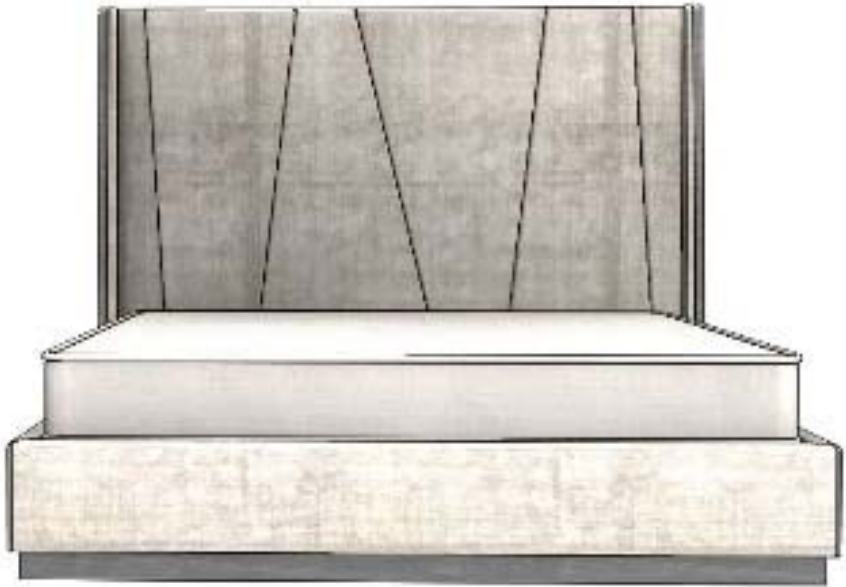
-UPHOLSTERED HEADBOARD WITH WOOD OR LACQUER HEADBOARD SIDES

-UPHOLSTERED BEDFRAME WITH MITERED CORNERS IN WOOD OR LACQUER

-WOOD OR LACQUER PLINTH

PLEASE NOTE:

-IF IN WOOD, PARTS ARE VENEERED



MADISON King Size Bed w/ Slats

86 5/8" 63" 85 3/4"

FINISH: EUCALYPTUS PLAIN STAIN OR LACQUER	MADI-111/AB1	Grade A/B	
	MADI-111/CD1	Grade C/D & COM	
	MADI-111/E1	Grade E/ Mastrotto Leather/ Ultrasuede	
	MADI-111/SUP1	<i>Superior Leather Grade SUP</i>	
FINISH: EUCALYPTUS FRISE, TULIP WOOD, OR NATURAL ROSEWOOD, ASH BURL	MADI-111/AB2	Grade A/B	
	MADI-111/CD2	Grade C/D & COM	
	MADI-111/E2	Grade E/ Mastrotto Leather/ Ultrasuede	
	MADI-111/SUP2	<i>Superior Leather Grade SUP</i>	
FINISH: OAK OR WALNUT (5% or 30% SHEEN)	MADI-111/AB3	Grade A/B	
	MADI-111/CD3	Grade C/D & COM	
	MADI-111/E3	Grade E/ Mastrotto Leather/ Ultrasuede	
	MADI-111/SUP3	<i>Superior Leather Grade SUP</i>	
FINISH: RECONSTITUTED EBONY, OAK FUME, OR RECONSTITUTED ROSEWOOD	MADI-111/AB4	Grade A/B	
	MADI-111/CD4	Grade C/D & COM	
	MADI-111/E4	Grade E/ Mastrotto Leather/ Ultrasuede	
	MADI-111/SUP4	<i>Superior Leather Grade SUP</i>	
FINISH: NATURAL EBONY	MADI-111/AB5	Grade A/B	
	MADI-111/CD5	Grade C/D & COM	
	MADI-111/E5	Grade E/ Mastrotto Leather/ Ultrasuede	
	MADI-111/SUP5	<i>Superior Leather Grade SUP</i>	

C.O.M Requirement for 55"W plain fabric is 5 1/2yards

BED	Description		Dimensions in Inches		
	Item No.	Finish	W	H	D

FINISH SPECIFICATION:

-UPHOLSTERED HEADBOARD WITH WOOD OR LACQUER HEADBOARD SIDES

-UPHOLSTERED BEDFRAME WITH MITERED CORNERS IN WOOD OR LACQUER

-WOOD OR LACQUER PLINTH

PLEASE NOTE:

-IF IN WOOD, PARTS ARE VENEERED



MADISON California King Size Bed w/ Slats

82 5/8" 63" 89 3/4"

FINISH: EUCALYPTUS PLAIN STAIN OR LACQUER	MADI-112/AB1	Grade A/B	
	MADI-112/CD1	Grade C/D & COM	
	MADI-112/E1	Grade E/ Mastrotto Leather/ Ultrasuede	
	MADI-112/SUP1	<i>Superior Leather Grade SUP</i>	
FINISH: EUCALYPTUS FRISE, TULIP WOOD, OR NATURAL ROSEWOOD, ASH BURL	MADI-112/AB2	Grade A/B	
	MADI-112/CD2	Grade C/D & COM	
	MADI-112/E2	Grade E/ Mastrotto Leather/ Ultrasuede	
	MADI-112/SUP2	<i>Superior Leather Grade SUP</i>	
FINISH: OAK OR WALNUT (5% or 30% SHEEN)	MADI-112/AB3	Grade A/B	
	MADI-112/CD3	Grade C/D & COM	
	MADI-112/E3	Grade E/ Mastrotto Leather/ Ultrasuede	
	MADI-112/SUP3	<i>Superior Leather Grade SUP</i>	
FINISH: RECONSTITUTED EBONY, OAK FUME, OR RECONSTITUTED ROSEWOOD	MADI-112/AB4	Grade A/B	
	MADI-112/CD4	Grade C/D & COM	
	MADI-112/E4	Grade E/ Mastrotto Leather/ Ultrasuede	
	MADI-112/SUP4	<i>Superior Leather Grade SUP</i>	
FINISH: NATURAL EBONY	MADI-112/AB5	Grade A/B	
	MADI-112/CD5	Grade C/D & COM	
	MADI-112/E5	Grade E/ Mastrotto Leather/ Ultrasuede	
	MADI-112/SUP5	<i>Superior Leather Grade SUP</i>	

C.O.M Requirement for 55"W plain fabric is 5 1/2yards

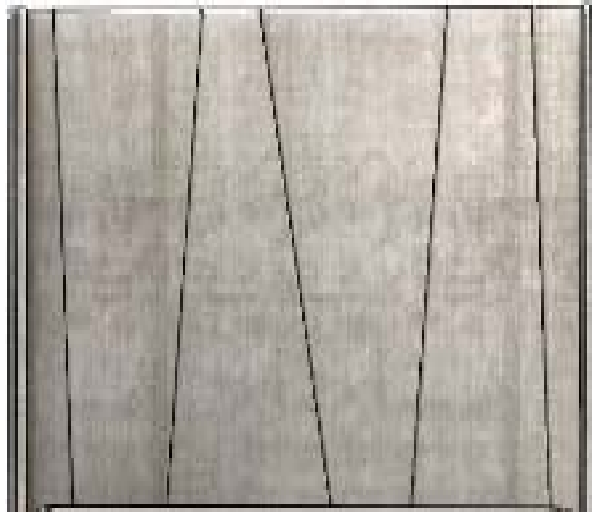
HEADBOARD	Description		Dimesions in Inches		
	Item No.	Finish	W	H	D

FINISH SPECIFICATION:

-UPHOLSTERED HEADBOARD WITH WOOD OR LACQUER HEADBOARD SIDES

PLEASE NOTE:

-IF IN WOOD, PARTS ARE VENEERED



MADISON Queen Size Headboard ONLY

70 5/8"

63"

6"

FINISH: EUCALYPTUS PLAIN STAIN OR LACQUER	MADI-116/AB1	Grade A/B	
	MADI-116/CD1	Grade C/D & COM	
	MADI-116/E1	Grade E/ Mastrotto Leather/ Ultrasuede	
	MADI-116/SUP1	<i>Superior Leather Grade SUP</i>	
FINISH: EUCALYPTUS FRISE, TULIP WOOD, OR NATURAL ROSEWOOD, ASH BURL	MADI-116/AB2	Grade A/B	
	MADI-116/CD2	Grade C/D & COM	
	MADI-116/E2	Grade E/ Mastrotto Leather/ Ultrasuede	
	MADI-116/SUP2	<i>Superior Leather Grade SUP</i>	
FINISH: OAK OR WALNUT (5% or 30% SHEEN)	MADI-116/AB3	Grade A/B	
	MADI-116/CD3	Grade C/D & COM	
	MADI-116/E3	Grade E/ Mastrotto Leather/ Ultrasuede	
	MADI-116/SUP3	<i>Superior Leather Grade SUP</i>	
FINISH: RECONSTITUTED EBONY, OAK FUME, OR RECONSTITUTED ROSEWOOD	MADI-116/AB4	Grade A/B	
	MADI-116/CD4	Grade C/D & COM	
	MADI-116/E4	Grade E/ Mastrotto Leather/ Ultrasuede	
	MADI-116/SUP4	<i>Superior Leather Grade SUP</i>	
FINISH: NATURAL EBONY	MADI-116/AB5	Grade A/B	
	MADI-116/CD5	Grade C/D & COM	
	MADI-116/E5	Grade E/ Mastrotto Leather/ Ultrasuede	
	MADI-116/SUP5	<i>Superior Leather Grade SUP</i>	

C.O.M Requirement for 55"W plain fabric is 4 yards

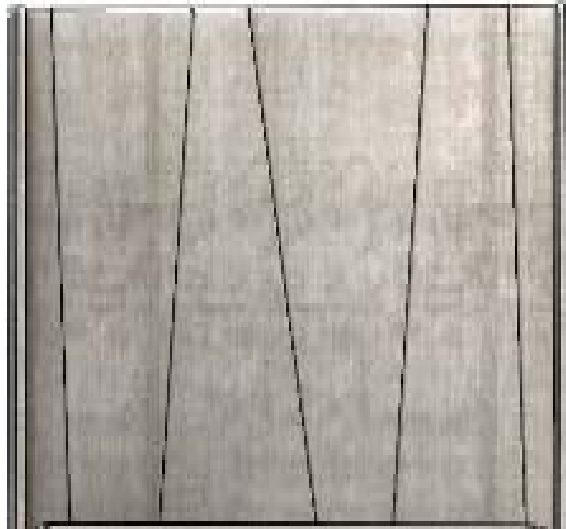
HEADBOARD	Description		Dimensions in Inches		
	Item No.	Finish	W	H	D

FINISH SPECIFICATION:

-UPHOLSTERED HEADBOARD WITH WOOD OR LACQUER HEADBOARD SIDES

PLEASE NOTE:

-IF IN WOOD, PARTS ARE VENEERED



MADISON King Size Headboard ONLY

86 5/8"

63"

6"

FINISH: EUCALYPTUS PLAIN STAIN OR LACQUER	MADI-117/AB1	Grade A/B	
	MADI-117/CD1	Grade C/D & COM	
	MADI-117/E1	Grade E/ Mastrotto Leather/ Ultrasuede	
	MADI-117/SUP1	<i>Superior Leather Grade SUP</i>	
FINISH: EUCALYPTUS FRISE, TULIP WOOD, OR NATURAL ROSEWOOD, ASH BURL	MADI-117/AB2	Grade A/B	
	MADI-117/CD2	Grade C/D & COM	
	MADI-117/E2	Grade E/ Mastrotto Leather/ Ultrasuede	
	MADI-117/SUP2	<i>Superior Leather Grade SUP</i>	
FINISH: OAK OR WALNUT (5% or 30% SHEEN)	MADI-117/AB3	Grade A/B	
	MADI-117/CD3	Grade C/D & COM	
	MADI-117/E3	Grade E/ Mastrotto Leather/ Ultrasuede	
	MADI-117/SUP3	<i>Superior Leather Grade SUP</i>	
FINISH: RECONSTITUTED EBONY, OAK FUME, OR RECONSTITUTED ROSEWOOD	MADI-117/AB4	Grade A/B	
	MADI-117/CD4	Grade C/D & COM	
	MADI-117/E4	Grade E/ Mastrotto Leather/ Ultrasuede	
	MADI-117/SUP4	<i>Superior Leather Grade SUP</i>	
FINISH: NATURAL EBONY	MADI-117/AB5	Grade A/B	
	MADI-117/CD5	Grade C/D & COM	
	MADI-117/E5	Grade E/ Mastrotto Leather/ Ultrasuede	
	MADI-117/SUP5	<i>Superior Leather Grade SUP</i>	

C.O.M Requirement for 55"W plain fabric is 5 yards

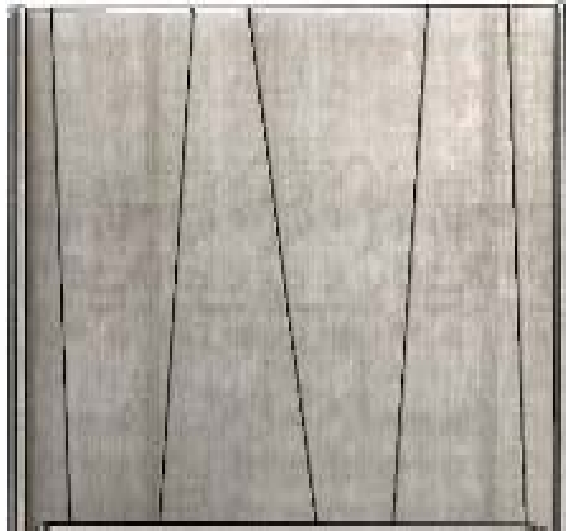
HEADBOARD	Description		Dimensions in Inches		
	Item No.	Finish	W	H	D

FINISH SPECIFICATION:

-UPHOLSTERED HEADBOARD WITH WOOD OR LACQUER HEADBOARD SIDES

PLEASE NOTE:

-IF IN WOOD, PARTS ARE VENEERED



MADISON California King Size Headboard ONLY

82 5/8" 63" 6"

FINISH: EUCALYPTUS PLAIN STAIN OR LACQUER	MADI-118/AB1	Grade A/B	
	MADI-118/CD1	Grade C/D & COM	
	MADI-118/E1	Grade E/ Mastrotto Leather/ Ultrasuede	
	MADI-118/SUP1	<i>Superior Leather Grade SUP</i>	
FINISH: EUCALYPTUS FRISE, TULIP WOOD, OR NATURAL ROSEWOOD, ASH BURL	MADI-118/AB2	Grade A/B	
	MADI-118/CD2	Grade C/D & COM	
	MADI-118/E2	Grade E/ Mastrotto Leather/ Ultrasuede	
	MADI-118/SUP2	<i>Superior Leather Grade SUP</i>	
FINISH: OAK OR WALNUT (5% or 30% SHEEN)	MADI-118/AB3	Grade A/B	
	MADI-118/CD3	Grade C/D & COM	
	MADI-118/E3	Grade E/ Mastrotto Leather/ Ultrasuede	
	MADI-118/SUP3	<i>Superior Leather Grade SUP</i>	
FINISH: RECONSTITUTED EBONY, OAK FUME, OR RECONSTITUTED ROSEWOOD	MADI-118/AB4	Grade A/B	
	MADI-118/CD4	Grade C/D & COM	
	MADI-118/E4	Grade E/ Mastrotto Leather/ Ultrasuede	
	MADI-118/SUP4	<i>Superior Leather Grade SUP</i>	
FINISH: NATURAL EBONY	MADI-118/AB5	Grade A/B	
	MADI-118/CD5	Grade C/D & COM	
	MADI-118/E5	Grade E/ Mastrotto Leather/ Ultrasuede	
	MADI-118/SUP5	<i>Superior Leather Grade SUP</i>	

C.O.M Requirement for 55"W plain fabric is 5 yards

NIGHT STAND	Description		Dimensions in Inches		
	Item No.	Finish	W	H	D

1 Drawer Night Stand

Lacquer Top
Metal Accents

29 1/2" 25 5/8" 17"



2 vol. / 0,209 m3 / 20 Kg

EUCALYPTUS PLAIN STAIN OR LACQUER	
MADI-105/1	Polished Stainless Steel
MADI-105/2	Polished Plated Stainless Steel Colors
MADI-105/3	Brass

EUCALYPTUS FRISE, ASH BURL OR NATURAL ROSEWOOD	
MADI-105/4	Polished Stainless Steel
MADI-105/5	Polished Plated Stainless Steel Colors
MADI-105/6	Brass

OAK OR WALNUT (5% or 30% SHEEN)	
MADI-105/7	Polished Stainless Steel
MADI-105/8	Polished Plated Stainless Steel Colors
MADI-105/9	Brass

RECONSTITUTED EBONY, OAK FUME, OR RECONSTITUTED ROSEWOOD	
MADI-105/10	Polished Stainless Steel
MADI-105/11	Polished Plated Stainless Steel Colors
MADI-105/12	Brass

NATURAL EBONY	
MADI-105/13	Polished Stainless Steel
MADI-105/14	Polished Plated Stainless Steel Colors
MADI-105/15	Brass

TULIP WOOD	
MADI-105/16	Polished Stainless Steel
MADI-105/17	Polished Plated Stainless Steel Colors
MADI-105/18	Brass

UPCHARGE	Marble Top
----------	------------

2 Drawer Night Stand

Lacquer Top
Metal Accents

29 1/2" 25 5/8" 17"



2 vol. / 0,219 m3 / 29 Kg

EUCALYPTUS PLAIN STAIN OR LACQUER	
MADI-106/1	Polished Stainless Steel
MADI-106/2	Polished Plated Stainless Steel Colors
MADI-106/3	Brass

EUCALYPTUS FRISE, ASH BURL OR NATURAL ROSEWOOD	
MADI-106/4	Polished Stainless Steel
MADI-106/5	Polished Plated Stainless Steel Colors
MADI-106/6	Brass

OAK OR WALNUT (5% or 30% SHEEN)	
MADI-106/7	Polished Stainless Steel
MADI-106/8	Polished Plated Stainless Steel Colors
MADI-106/9	Brass

RECONSTITUTED EBONY, OAK FUME, OR RECONSTITUTED ROSEWOOD	
MADI-106/10	Polished Stainless Steel
MADI-106/11	Polished Plated Stainless Steel Colors
MADI-106/12	Brass

NIGHT STAND	Description		Dimensions in Inches		
	Item No.	Finish	W	H	D



2 vol. / 0,219 m3 / 29 Kg

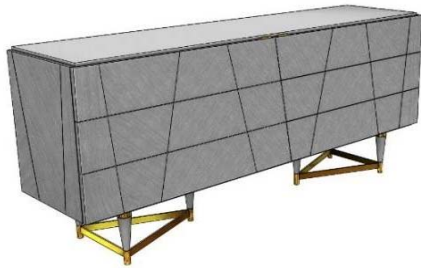
2 Drawer Night Stand

Lacquer Top
Metal Accents

29 1/2" 25 5/8" 17"

NATURAL EBONY		
MADI-106/13	Polished Stainless Steel	
MADI-106/14	Polished Plated Stainless Steel Colors	
MADI-106/15	Brass	
TULIP WOOD		
MADI-106/16	Polished Stainless Steel	
MADI-106/17	Polished Plated Stainless Steel Colors	
MADI-106/18	Brass	
UPCHARGE	Marble Top	

DRESSER



3 vol. / 0,187 m3 / 129 Kg

6 Drawer Dresser

Lacquer Top
Metal Accents

78 3/4" 34 5/8" 19 5/8"

EUCALYPTUS PLAIN STAIN OR LACQUER		
MADI-107/1	Polished Stainless Steel	
MADI-107/2	Polished Plated Stainless Steel Colors	
MADI-107/3	Brass	
EUCALYPTUS FRISE, ASH BURL OR NATURAL ROSEWOOD		
MADI-107/4	Polished Stainless Steel	
MADI-107/5	Polished Plated Stainless Steel Colors	
MADI-107/6	Brass	
OAK OR WALNUT (5% or 30% SHEEN)		
MADI-107/7	Polished Stainless Steel	
MADI-107/8	Polished Plated Stainless Steel Colors	
MADI-107/9	Brass	
RECONSTITUTED EBONY, OAK FUME, OR RECONSTITUTED ROSEWOOD		
MADI-107/10	Polished Stainless Steel	
MADI-107/11	Polished Plated Stainless Steel Colors	
MADI-107/12	Brass	
NATURAL EBONY		
MADI-107/13	Polished Stainless Steel	
MADI-107/14	Polished Plated Stainless Steel Colors	
MADI-107/15	Brass	
TULIP WOOD		
MADI-107/16	Polished Stainless Steel	
MADI-107/17	Polished Plated Stainless Steel Colors	
MADI-107/18	Brass	
UPCHARGE	Marble Top	

HIGH CHEST	Description		Dimesions in Inches		
	Item No.	Finish	W	H	D

6 Drawer High Chest

Lacquer Top
Metal Accents

31 1/2" 55 1/8" 18 1/8"



2 vol. / 0,537 m3 / 75 Kg

*** RECOMMENDED THAT UNIT
BE ATTACHED TO WALL***

EUCALYPTUS PLAIN STAIN OR LACQUER					
MADI-108/1	Polished Stainless Steel				
MADI-108/2	Polished Plated Stainless Steel Colors				
MADI-108/3	Brass				
EUCALYPTUS FRISE, ASH BURL OR NATURAL ROSEWOOD					
MADI-108/4	Polished Stainless Steel				
MADI-108/5	Polished Plated Stainless Steel Colors				
MADI-108/6	Brass				
OAK OR WALNUT (5% or 30% SHEEN)					
MADI-108/7	Polished Stainless Steel				
MADI-108/8	Polished Plated Stainless Steel Colors				
MADI-108/9	Brass				
RECONSTITUTED EBONY, OAK FUME, OR RECONSTITUTED ROSEWOOD					
MADI-108/10	Polished Stainless Steel				
MADI-108/11	Polished Plated Stainless Steel Colors				
MADI-108/12	Brass				
NATURAL EBONY					
MADI-108/13	Polished Stainless Steel				
MADI-108/14	Polished Plated Stainless Steel Colors				
MADI-108/15	Brass				
TULIP WOOD					
MADI-108/16	Polished Stainless Steel				
MADI-108/17	Polished Plated Stainless Steel Colors				
MADI-108/18	Brass				
UPCHARGE	Marble Top				

VANITY DESK

Vanity Desk

1x Door
1x Interior Drawer w/ Jewelry Box
Metal Plinth

63" 30" 17 3/4"



1 vol. / 0,421 m3 / 39 Kg

EUCALYPTUS PLAIN STAIN OR LACQUER					
MADI-109/1	Polished Stainless Steel				
MADI-109/2	Polished Plated Stainless Steel Colors				
MADI-109/3	Brass				
EUCALYPTUS FRISE, ASH BURL OR NATURAL ROSEWOOD					
MADI-109/4	Polished Stainless Steel				
MADI-109/5	Polished Plated Stainless Steel Colors				
MADI-109/6	Brass				
OAK OR WALNUT (5% or 30% SHEEN)					
MADI-109/7	Polished Stainless Steel				
MADI-109/8	Polished Plated Stainless Steel Colors				
MADI-109/9	Brass				
RECONSTITUTED EBONY, OAK FUME, OR RECONSTITUTED ROSEWOOD					
MADI-109/10	Polished Stainless Steel				
MADI-109/11	Polished Plated Stainless Steel Colors				
MADI-109/12	Brass				

VANITY	Description		Dimensions in Inches		
	Item No.	Finish	W	H	D



Vanity Desk
 1x Door
 1x Interior Drawer w/ Jewelry Box
 Metal Plinth

63" 30" 17 3/4"

NATURAL EBONY

MADI-109/13	Polished Stainless Steel
MADI-109/14	Polished Plated Stainless Steel Colors
MADI-109/15	Brass

TULIP WOOD

MADI-109/16	Polished Stainless Steel
MADI-109/17	Polished Plated Stainless Steel Colors
MADI-109/18	Brass

UPCHARGE	Mirror
-----------------	--------

*** Mirror Dimensions: 23 5/8" x 13 3/4" x 7 1/4"***



1 vol. / 0,421 m3 / 39 Kg

BEDROOM BENCH



Upholstered Bench
 w/ Wood Stained Legs

50 3/8" 15 3/8" 18 1/8"

MADI-101/AB	Grade A/B
MADI-101/CD	Grade C/D & COM
MADI-101/E	Grade E/ Mastroto Leather/ Ultrasuede
MADI-101/SUP	Superior Leather Grade SUP

C.O.M Requirement for 55"W
 plain fabric is 2 yards

1 vol. / 0,600 m3 / 39 Kg

DINING TABLE	Description		Dimensions in Inches		
	Item No.	Finish	W	H	D

MADISON Extension Dining Table					
Metal Accents					
			70 7/8"	30"	39 3/8"
2x 15 3/4" Extension Leaves					

EUCALYPTUS PLAIN STAIN OR LACQUER		
MADI-3013/1	Polished Stainless Steel	
MADI-3013/2	Polished Plated Stainless Steel Colors	
MADI-3013/3	Brass	

EUCALYPTUS FRISE, ASH BURL OR NATURAL ROSEWOOD		
MADI-3013/4	Polished Stainless Steel	
MADI-3013/5	Polished Plated Stainless Steel Colors	
MADI-3013/6	Brass	

OAK OR WALNUT (5% or 30% SHEEN)		
MADI-3013/7	Polished Stainless Steel	
MADI-3013/8	Polished Plated Stainless Steel Colors	
MADI-3013/9	Brass	

RECONSTITUTED EBONY, OAK FUME, OR RECONSTITUTED ROSEWOOD		
MADI-3013/10	Polished Stainless Steel	
MADI-3013/11	Polished Plated Stainless Steel Colors	
MADI-3013/12	Brass	

NATURAL EBONY		
MADI-3013/13	Polished Stainless Steel	
MADI-3013/14	Polished Plated Stainless Steel Colors	
MADI-3013/15	Brass	

TULIP WOOD		
MADI-3013/16	Polished Stainless Steel	
MADI-3013/17	Polished Plated Stainless Steel Colors	
MADI-3013/18	Brass	

MADISON Extension Dining Table					
Metal Accents					
			78 3/4"	30"	39 3/8"
2x 15 3/4" Extension Leaves					

EUCALYPTUS PLAIN STAIN OR LACQUER		
MADI-3014/1	Polished Stainless Steel	
MADI-3014/2	Polished Plated Stainless Steel Colors	
MADI-3014/3	Brass	

EUCALYPTUS FRISE, ASH BURL OR NATURAL ROSEWOOD		
MADI-3014/4	Polished Stainless Steel	
MADI-3014/5	Polished Plated Stainless Steel Colors	
MADI-3014/6	Brass	

OAK OR WALNUT (5% or 30% SHEEN)		
MADI-3014/7	Polished Stainless Steel	
MADI-3014/8	Polished Plated Stainless Steel Colors	
MADI-3014/9	Brass	

RECONSTITUTED EBONY, OAK FUME, OR RECONSTITUTED ROSEWOOD		
MADI-3014/10	Polished Stainless Steel	
MADI-3014/11	Polished Plated Stainless Steel Colors	
MADI-3014/12	Brass	

NATURAL EBONY		
MADI-3014/13	Polished Stainless Steel	
MADI-3014/14	Polished Plated Stainless Steel Colors	
MADI-3014/15	Brass	

TULIP WOOD		
MADI-3014/16	Polished Stainless Steel	
MADI-3014/17	Polished Plated Stainless Steel Colors	
MADI-3014/18	Brass	



DINING TABLE	Description		Dimensions in Inches		
	Item No.	Finish	W	H	D

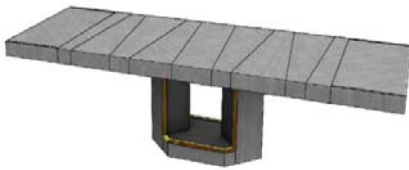
MADISON Extension Dining Table
 Metal Accents
 86 5/8" 30" 43 3/8"
 2x 19 5/8" Extension Leafs



EUCALYPTUS PLAIN STAIN OR LACQUER		
MADI-3015/1	Polished Stainless Steel	
MADI-3015/2	Polished Plated Stainless Steel Colors	
MADI-3015/3	Brass	

EUCALYPTUS FRISE, ASH BURL OR NATURAL ROSEWOOD		
MADI-3015/4	Polished Stainless Steel	
MADI-3015/5	Polished Plated Stainless Steel Colors	
MADI-3015/6	Brass	

OAK OR WALNUT (5% or 30% SHEEN)		
MADI-3015/7	Polished Stainless Steel	
MADI-3015/8	Polished Plated Stainless Steel Colors	
MADI-3015/9	Brass	



RECONSTITUTED EBONY, OAK FUME, OR RECONSTITUTED ROSEWOOD		
MADI-3015/10	Polished Stainless Steel	
MADI-3015/11	Polished Plated Stainless Steel Colors	
MADI-3015/12	Brass	

NATURAL EBONY		
MADI-3015/13	Polished Stainless Steel	
MADI-3015/14	Polished Plated Stainless Steel Colors	
MADI-3015/15	Brass	

TULIP WOOD		
MADI-3015/16	Polished Stainless Steel	
MADI-3015/17	Polished Plated Stainless Steel Colors	
MADI-3015/18	Brass	

MADISON Extension Dining Table
 Metal Accents
 94 1/2" 30" 43 3/8"
 2x 19 5/8" Extension Leafs



EUCALYPTUS PLAIN STAIN OR LACQUER		
MADI-3016/1	Polished Stainless Steel	
MADI-3016/2	Polished Plated Stainless Steel Colors	
MADI-3016/3	Brass	

EUCALYPTUS FRISE, ASH BURL OR NATURAL ROSEWOOD		
MADI-3016/4	Polished Stainless Steel	
MADI-3016/5	Polished Plated Stainless Steel Colors	
MADI-3016/6	Brass	

OAK OR WALNUT (5% or 30% SHEEN)		
MADI-3016/7	Polished Stainless Steel	
MADI-3016/8	Polished Plated Stainless Steel Colors	
MADI-3016/9	Brass	



RECONSTITUTED EBONY, OAK FUME, OR RECONSTITUTED ROSEWOOD		
MADI-3016/10	Polished Stainless Steel	
MADI-3016/11	Polished Plated Stainless Steel Colors	
MADI-3016/12	Brass	

NATURAL EBONY		
MADI-3016/13	Polished Stainless Steel	
MADI-3016/14	Polished Plated Stainless Steel Colors	
MADI-3016/15	Brass	

TULIP WOOD		
MADI-3016/16	Polished Stainless Steel	
MADI-3016/17	Polished Plated Stainless Steel Colors	
MADI-3016/18	Brass	

DINING TABLE	Description		Dimensions in Inches		
	Item No.	Finish	W	H	D

MADISON Extension Dining Table					
Metal Accents					
			70 7/8"	30"	48"
			2x 15 3/4" Extension Leaves		



EUCALYPTUS PLAIN STAIN OR LACQUER		
MADI-3027/1	Polished Stainless Steel	
MADI-3027/2	Polished Plated Stainless Steel Colors	
MADI-3027/3	Brass	

EUCALYPTUS FRISE, ASH BURL OR NATURAL ROSEWOOD		
MADI-3027/4	Polished Stainless Steel	
MADI-3027/5	Polished Plated Stainless Steel Colors	
MADI-3027/6	Brass	

OAK OR WALNUT (5% or 30% SHEEN)		
MADI-3027/7	Polished Stainless Steel	
MADI-3027/8	Polished Plated Stainless Steel Colors	
MADI-3027/9	Brass	

RECONSTITUTED EBONY, OAK FUME, OR RECONSTITUTED ROSEWOOD		
MADI-3027/10	Polished Stainless Steel	
MADI-3027/11	Polished Plated Stainless Steel Colors	
MADI-3027/12	Brass	

NATURAL EBONY		
MADI-3027/13	Polished Stainless Steel	
MADI-3027/14	Polished Plated Stainless Steel Colors	
MADI-3027/15	Brass	

TULIP WOOD		
MADI-3027/16	Polished Stainless Steel	
MADI-3027/17	Polished Plated Stainless Steel Colors	
MADI-3027/18	Brass	

MADISON Extension Dining Table					
Metal Accents					
			78 3/4"	30"	48"
			2x 15 3/4" Extension Leaves		



EUCALYPTUS PLAIN STAIN OR LACQUER		
MADI-3028/1	Polished Stainless Steel	
MADI-3028/2	Polished Plated Stainless Steel Colors	
MADI-3028/3	Brass	

EUCALYPTUS FRISE, ASH BURL OR NATURAL ROSEWOOD		
MADI-3028/4	Polished Stainless Steel	
MADI-3028/5	Polished Plated Stainless Steel Colors	
MADI-3028/6	Brass	

OAK OR WALNUT (5% or 30% SHEEN)		
MADI-3028/7	Polished Stainless Steel	
MADI-3028/8	Polished Plated Stainless Steel Colors	
MADI-3028/9	Brass	

RECONSTITUTED EBONY, OAK FUME, OR RECONSTITUTED ROSEWOOD		
MADI-3028/10	Polished Stainless Steel	
MADI-3028/11	Polished Plated Stainless Steel Colors	
MADI-3028/12	Brass	

NATURAL EBONY		
MADI-3028/13	Polished Stainless Steel	
MADI-3028/14	Polished Plated Stainless Steel Colors	
MADI-3028/15	Brass	

TULIP WOOD		
MADI-3028/16	Polished Stainless Steel	
MADI-3028/17	Polished Plated Stainless Steel Colors	
MADI-3028/18	Brass	

DINING TABLE	Description		Dimensions in Inches		
	Item No.	Finish	W	H	D

MADISON Extension Dining Table					
Metal Accents					
			86 5/8"	30"	48"
2x 19 5/8" Extension Leaves					



EUCALYPTUS PLAIN STAIN OR LACQUER		
MADI-3029/1	Polished Stainless Steel	
MADI-3029/2	Polished Plated Stainless Steel Colors	
MADI-3029/3	Brass	

EUCALYPTUS FRISE, ASH BURL OR NATURAL ROSEWOOD		
MADI-3029/4	Polished Stainless Steel	
MADI-3029/5	Polished Plated Stainless Steel Colors	
MADI-3029/6	Brass	

OAK OR WALNUT (5% or 30% SHEEN)		
MADI-3029/7	Polished Stainless Steel	
MADI-3029/8	Polished Plated Stainless Steel Colors	
MADI-3029/9	Brass	

RECONSTITUTED EBONY, OAK FUME, OR RECONSTITUTED ROSEWOOD		
MADI-3029/10	Polished Stainless Steel	
MADI-3029/11	Polished Plated Stainless Steel Colors	
MADI-3029/12	Brass	

NATURAL EBONY		
MADI-3029/13	Polished Stainless Steel	
MADI-3029/14	Polished Plated Stainless Steel Colors	
MADI-3029/15	Brass	

TULIP WOOD		
MADI-3029/16	Polished Stainless Steel	
MADI-3029/17	Polished Plated Stainless Steel Colors	
MADI-3029/18	Brass	

MADISON Extension Dining Table					
Metal Accents					
			94 1/2"	30"	48"
2x 19 5/8" Extension Leaves					



EUCALYPTUS PLAIN STAIN OR LACQUER		
MADI-3030/1	Polished Stainless Steel	
MADI-3030/2	Polished Plated Stainless Steel Colors	
MADI-3030/3	Brass	

EUCALYPTUS FRISE, ASH BURL OR NATURAL ROSEWOOD		
MADI-3030/4	Polished Stainless Steel	
MADI-3030/5	Polished Plated Stainless Steel Colors	
MADI-3030/6	Brass	

OAK OR WALNUT (5% or 30% SHEEN)		
MADI-3030/7	Polished Stainless Steel	
MADI-3030/8	Polished Plated Stainless Steel Colors	
MADI-3030/9	Brass	

RECONSTITUTED EBONY, OAK FUME, OR RECONSTITUTED ROSEWOOD		
MADI-3030/10	Polished Stainless Steel	
MADI-3030/11	Polished Plated Stainless Steel Colors	
MADI-3030/12	Brass	

NATURAL EBONY		
MADI-3030/13	Polished Stainless Steel	
MADI-3030/14	Polished Plated Stainless Steel Colors	
MADI-3030/15	Brass	

TULIP WOOD		
MADI-3030/16	Polished Stainless Steel	
MADI-3030/17	Polished Plated Stainless Steel Colors	
MADI-3030/18	Brass	

DINING TABLE	Description		Dimensions in Inches		
	Item No.	Finish	W	H	D

MADISON Extension Dining Table					
Metal Accents					
			110 1/4"	30"	48"
2x 19 5/8" Extension Leaves					



EUCALYPTUS PLAIN STAIN OR LACQUER		
MADI-3031/1	Polished Stainless Steel	
MADI-3031/2	Polished Plated Stainless Steel Colors	
MADI-3031/3	Brass	

EUCALYPTUS FRISE, ASH BURL OR NATURAL ROSEWOOD		
MADI-3031/4	Polished Stainless Steel	
MADI-3031/5	Polished Plated Stainless Steel Colors	
MADI-3031/6	Brass	

OAK OR WALNUT (5% or 30% SHEEN)		
MADI-3031/7	Polished Stainless Steel	
MADI-3031/8	Polished Plated Stainless Steel Colors	
MADI-3031/9	Brass	

RECONSTITUTED EBONY, OAK FUME, OR RECONSTITUTED ROSEWOOD		
MADI-3031/10	Polished Stainless Steel	
MADI-3031/11	Polished Plated Stainless Steel Colors	
MADI-3031/12	Brass	

NATURAL EBONY		
MADI-3031/13	Polished Stainless Steel	
MADI-3031/14	Polished Plated Stainless Steel Colors	
MADI-3031/15	Brass	

TULIP WOOD		
MADI-3031/16	Polished Stainless Steel	
MADI-3031/17	Polished Plated Stainless Steel Colors	
MADI-3031/18	Brass	

MADISON Extension Dining Table					
Metal Accents					
			118 1/8"	30"	48"
2x 19 5/8" Extension Leaves					



EUCALYPTUS PLAIN STAIN OR LACQUER		
MADI-3032/1	Polished Stainless Steel	
MADI-3032/2	Polished Plated Stainless Steel Colors	
MADI-3032/3	Brass	

EUCALYPTUS FRISE, ASH BURL OR NATURAL ROSEWOOD		
MADI-3032/4	Polished Stainless Steel	
MADI-3032/5	Polished Plated Stainless Steel Colors	
MADI-3032/6	Brass	

OAK OR WALNUT (5% or 30% SHEEN)		
MADI-3032/7	Polished Stainless Steel	
MADI-3032/8	Polished Plated Stainless Steel Colors	
MADI-3032/9	Brass	

RECONSTITUTED EBONY, OAK FUME, OR RECONSTITUTED ROSEWOOD		
MADI-3032/10	Polished Stainless Steel	
MADI-3032/11	Polished Plated Stainless Steel Colors	
MADI-3032/12	Brass	

NATURAL EBONY		
MADI-3032/13	Polished Stainless Steel	
MADI-3032/14	Polished Plated Stainless Steel Colors	
MADI-3032/15	Brass	

TULIP WOOD		
MADI-3032/16	Polished Stainless Steel	
MADI-3032/17	Polished Plated Stainless Steel Colors	
MADI-3032/18	Brass	

SIDEBOARD

Description		Dimesions in Inches		
Item No.	Finish	W	H	D

MADISON Sideboard (Big Version)				
4x Doors				
1x Interior Drawer & 3x Glass Shelves				
Lacquer Top & Metal Accents				
		86 5/8"	33 1/2"	21 5/8"



3 vol. / 1,239 m3 / 150 Kg

EUCALYPTUS PLAIN STAIN OR LACQUER	
MADI-3001/1	Polished Stainless Steel
MADI-3001/2	Polished Plated Stainless Steel Colors
MADI-3001/3	Brass

EUCALYPTUS FRISE, ASH BURL OR NATURAL ROSEWOOD	
MADI-3001/4	Polished Stainless Steel
MADI-3001/5	Polished Plated Stainless Steel Colors
MADI-3001/6	Brass

OAK OR WALNUT (5% or 30% SHEEN)	
MADI-3001/7	Polished Stainless Steel
MADI-3001/8	Polished Plated Stainless Steel Colors
MADI-3001/9	Brass

RECONSTITUTED EBONY, OAK FUME, OR RECONSTITUTED ROSEWOOD	
MADI-3001/10	Polished Stainless Steel
MADI-3001/11	Polished Plated Stainless Steel Colors
MADI-3001/12	Brass

NATURAL EBONY	
MADI-3001/13	Polished Stainless Steel
MADI-3001/14	Polished Plated Stainless Steel Colors
MADI-3001/15	Brass

TULIP WOOD	
MADI-3001/16	Polished Stainless Steel
MADI-3001/17	Polished Plated Stainless Steel Colors
MADI-3001/18	Brass

UPCHARGE	Cutlery Instert
UPCHARGE	Marble Top

MADISON Sideboard (Sml Version)				
4x Doors				
1x Interior Drawer & 3x Glass Shelves				
Lacquer Top & Metal Accents				
		70 7/8"	33 1/2"	21 5/8"



3 vol. / 1,190 m3 / 129 Kg

EUCALYPTUS PLAIN STAIN OR LACQUER	
MADI-3002/1	Polished Stainless Steel
MADI-3002/2	Polished Plated Stainless Steel Colors
MADI-3002/3	Brass

EUCALYPTUS FRISE, ASH BURL OR NATURAL ROSEWOOD	
MADI-3002/4	Polished Stainless Steel
MADI-3002/5	Polished Plated Stainless Steel Colors
MADI-3002/6	Brass

OAK OR WALNUT (5% or 30% SHEEN)	
MADI-3002/7	Polished Stainless Steel
MADI-3002/8	Polished Plated Stainless Steel Colors
MADI-3002/9	Brass

RECONSTITUTED EBONY, OAK FUME, OR RECONSTITUTED ROSEWOOD	
MADI-3002/10	Polished Stainless Steel
MADI-3002/11	Polished Plated Stainless Steel Colors
MADI-3002/12	Brass

SIDEBOARD



3 vol. / 1,190 m3 / 129 Kg

Description		Dimesions in Inches		
Item No.	Finish	W	H	D
MADISON Sideboard (Sml Version)				
4x Doors				
1x Interior Drawer & 3x Glass Shelves				
Lacquer Top & Metal Accents				
		70 7/8"	33 1/2"	21 5/8"
NATURAL EBONY				
MADI-3002/13	Polished Stainless Steel			
MADI-3002/14	Polished Plated Stainless Steel Colors			
MADI-3002/15	Brass			
TULIP WOOD				
MADI-3002/16	Polished Stainless Steel			
MADI-3002/17	Polished Plated Stainless Steel Colors			
MADI-3002/18	Brass			
UPCHARGE	Cutlery Instert			
UPCHARGE	Marble Top			

VITRINE	Description		Dimensions in Inches		
	Item No.	Finish	W	H	D



3 vol. / 0,421 m3 / 70 Kg

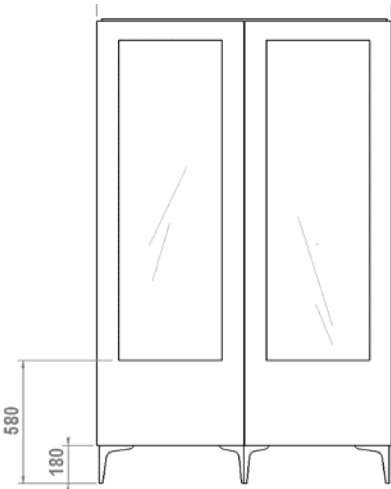
MADISON A1 - 2 Door Vitrine w/ Juliana Legs
 4x Adjustable Glass Shelves
 Painted Iron Legs & Handle

48" 86" 18 7/8"

FINISH OPTIONS

MADI-3021/1	Eucalyptus Frise, Ash Burl or Natural Rosewood
MADI-3021/2	Tulip Wood
MADI-3021/3	Reconstituted Ebony, Oak Fume or Reconstituted Rosewood
MADI-3021/4	Natural Ebony
MADI-3021/5	Eucalyptus Stain or Lacquer
MADI-3021/6	Oak or Walnut (5% or 30% Sheen)

UPCHARGE	LED Spot Light
UPCHARGE	Mirrored Back



3 vol. / 0,421 m3 / 70 Kg

MADISON A2 - 2 Door Vitrine w/ Juliana Legs
 1x Fixed Wooden Shelf & 3x Adjustable Glass Shelves
 Painted Iron Legs & Handle

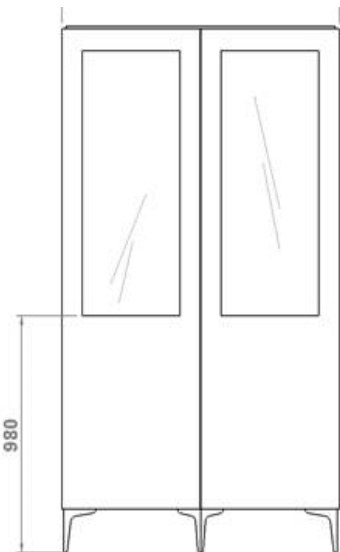
48" 86" 18 7/8"

FINISH OPTIONS

MADI-3022/1	Eucalyptus Frise, Ash Burl or Natural Rosewood
MADI-3022/2	Tulip Wood
MADI-3022/3	Reconstituted Ebony, Oak Fume or Reconstituted Rosewood
MADI-3022/4	Natural Ebony
MADI-3022/5	Eucalyptus Stain or Lacquer
MADI-3022/6	Oak or Walnut (5% or 30% Sheen)

UPCHARGE	LED Spot Light
UPCHARGE	Mirrored Back

A2: SOLID DOORS TO 22 3/4" UP FROM FLOOR (58 CM)



3 vol. / 0,421 m3 / 70 Kg

MADISON A3 - 2 Door Vitrine w/ Juliana Legs
 1x Fixed Wooden Shelf & 3x Adjustable Glass Shelves
 Painted Iron Legs & Handle

48" 86" 18 7/8"

FINISH OPTIONS

MADI-3023/1	Eucalyptus Frise, Ash Burl or Natural Rosewood
MADI-3023/2	Tulip Wood
MADI-3023/3	Reconstituted Ebony, Oak Fume or Reconstituted Rosewood
MADI-3023/4	Natural Ebony
MADI-3023/5	Eucalyptus Stain or Lacquer
MADI-3023/6	Oak or Walnut (5% or 30% Sheen)

UPCHARGE	LED Spot Light
UPCHARGE	Mirrored Back

A3: SOLID DOORS TO 38 1/2" UP FROM FLOOR (98 CM)

LEG HEIGHT: 7"
 HANDLE HEIGHT: 7 7/8"

VITRINE	Description		Dimensions in Inches		
	Item No.	Finish	W	H	D



3 vol. / 0,421 m3 / 70 Kg

MADISON B1 - 1 Door Vitrine w/ Juliana Legs
 4x Adjustable Glass Shelves
 Painted Iron Legs & Handle

26" 86" 18 7/8"

FINISH OPTIONS		
MADI-3024/1	Eucalyptus Frise, Ash Burl or Natural Rosewood	
MADI-3024/2	Tulip Wood	
MADI-3024/3	Reconstituted Ebony, Oak Fume or Reconstituted Rosewood	
MADI-3024/4	Natural Ebony	
MADI-3024/5	Eucalyptus Stain or Lacquer	
MADI-3024/6	Oak or Walnut (5% or 30% Sheen)	

UPCHARGE	LED Spot Light	
UPCHARGE	Mirrored Back	



3 vol. / 0,421 m3 / 70 Kg

MADISON B2 - 1 Door Vitrine w/ Juliana Legs
 1x Fixed Wooden Shelf & 3x Adjustable Glass Shelves
 Painted Iron Legs & Handle

26" 86" 18 7/8"

FINISH OPTIONS		
MADI-3025/1	Eucalyptus Frise, Ash Burl or Natural Rosewood	
MADI-3025/2	Tulip Wood	
MADI-3025/3	Reconstituted Ebony, Oak Fume or Reconstituted Rosewood	
MADI-3025/4	Natural Ebony	
MADI-3025/5	Eucalyptus Stain or Lacquer	
MADI-3025/6	Oak or Walnut (5% or 30% Sheen)	

UPCHARGE	LED Spot Light	
UPCHARGE	Mirrored Back	

B2: SOLID DOORS TO 22 3/4" UP FROM FLOOR (58 CM)



3 vol. / 0,421 m3 / 70 Kg

MADISON B3 - 1 Door Vitrine w/ Juliana Legs
 1x Fixed Wooden Shelf & 3x Adjustable Glass Shelves
 Painted Iron Legs & Handle

26" 86" 18 7/8"

FINISH OPTIONS		
MADI-3026/1	Eucalyptus Frise, Ash Burl or Natural Rosewood	
MADI-3026/2	Tulip Wood	
MADI-3026/3	Reconstituted Ebony, Oak Fume or Reconstituted Rosewood	
MADI-3026/4	Natural Ebony	
MADI-3026/5	Eucalyptus Stain or Lacquer	
MADI-3026/6	Oak or Walnut (5% or 30% Sheen)	

UPCHARGE	LED Spot Light	
UPCHARGE	Mirrored Back	

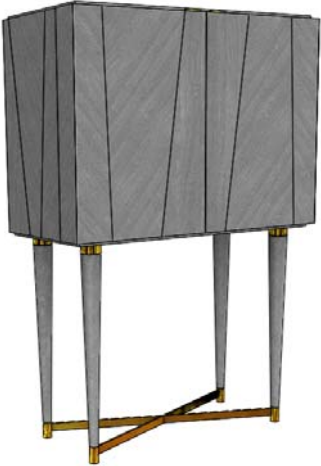
B3: SOLID DOORS TO 38 1/2" UP FROM FLOOR (98 CM)

LEG HEIGHT: 7"
 HANDLE HEIGHT: 7 7/8"

BAR	Description		Dimensions in Inches		
	Item No.	Finish	W	H	D

MADISON High Bar
 Mirrored Back
 1x Glass Shelf & 1x Lacquer Shelf
 1x Pull-out Shelf
 Lacquer Top & Metal Accents

39 3/8" 63" 17 3/4"



*** RECOMMENDED THAT UNIT BE ATTACHED TO WALL***

3 vol. / 0,720 m3 / 110 Kg

EUCALYPTUS PLAIN STAIN OR LACQUER		
MADI-3007/1	Polished Stainless Steel	
MADI-3007/2	Polished Plated Stainless Steel Colors	
MADI-3007/3	Brass	
EUCALYPTUS FRISE, ASH BURL OR NATURAL ROSEWOOD		
MADI-3007/4	Polished Stainless Steel	
MADI-3007/5	Polished Plated Stainless Steel Colors	
MADI-3007/6	Brass	
OAK OR WALNUT (5% or 30% SHEEN)		
MADI-3007/7	Polished Stainless Steel	
MADI-3007/8	Polished Plated Stainless Steel Colors	
MADI-3007/9	Brass	
RECONSTITUTED EBONY, OAK FUME, OR RECONSTITUTED ROSEWOOD		
MADI-3007/10	Polished Stainless Steel	
MADI-3007/11	Polished Plated Stainless Steel Colors	
MADI-3007/12	Brass	
NATURAL EBONY		
MADI-3007/13	Polished Stainless Steel	
MADI-3007/14	Polished Plated Stainless Steel Colors	
MADI-3007/15	Brass	
TULIP WOOD		
MADI-3007/16	Polished Stainless Steel	
MADI-3007/17	Polished Plated Stainless Steel Colors	
MADI-3007/18	Brass	
UPCHARGE	LED Projector	
UPCHARGE	Marble Top	

MEDIA	Description		Dimesions in Inches		
	Item No.	Finish	W	H	D

MADISON Media Cabinet
 4x Doors
 3x Glass Shelves
 Lacquer Top & Metal Accents

86 5/8" 23 5/8" 19 5/8"



3 vol. / 0,860 m3 / 120 Kg

EUCALYPTUS PLAIN STAIN OR LACQUER

MADI-3003/1	Polished Stainless Steel
MADI-3003/2	Polished Plated Stainless Steel Colors
MADI-3003/3	Brass

EUCALYPTUS FRISE, ASH BURL OR NATURAL ROSEWOOD

MADI-3003/4	Polished Stainless Steel
MADI-3003/5	Polished Plated Stainless Steel Colors
MADI-3003/6	Brass

OAK OR WALNUT (5% or 30% SHEEN)

MADI-3003/7	Polished Stainless Steel
MADI-3003/8	Polished Plated Stainless Steel Colors
MADI-3003/9	Brass

RECONSTITUTED EBONY, OAK FUME, OR RECONSTITUTED ROSEWOOD

MADI-3003/10	Polished Stainless Steel
MADI-3003/11	Polished Plated Stainless Steel Colors
MADI-3003/12	Brass

NATURAL EBONY

MADI-3003/13	Polished Stainless Steel
MADI-3003/14	Polished Plated Stainless Steel Colors
MADI-3003/15	Brass

TULIP WOOD

MADI-3003/16	Polished Stainless Steel
MADI-3003/17	Polished Plated Stainless Steel Colors
MADI-3003/18	Brass

UPCHARGE	IR Remote
UPCHARGE	Marble Top

MADISON Media Cabinet
 4x Doors
 3x Glass Shelves
 Lacquer Top & Metal Accents

70 7/8" 23 5/8" 19 5/8"



3 vol. / 0,660 m3 / 100 Kg

EUCALYPTUS PLAIN STAIN OR LACQUER

MADI-3004/1	Polished Stainless Steel
MADI-3004/2	Polished Plated Stainless Steel Colors
MADI-3004/3	Brass

EUCALYPTUS FRISE, ASH BURL OR NATURAL ROSEWOOD

MADI-3004/4	Polished Stainless Steel
MADI-3004/5	Polished Plated Stainless Steel Colors
MADI-3004/6	Brass

OAK OR WALNUT (5% or 30% SHEEN)

MADI-3004/7	Polished Stainless Steel
MADI-3004/8	Polished Plated Stainless Steel Colors
MADI-3004/9	Brass

RECONSTITUTED EBONY, OAK FUME, OR RECONSTITUTED ROSEWOOD

MADI-3004/10	Polished Stainless Steel
MADI-3004/11	Polished Plated Stainless Steel Colors
MADI-3004/12	Brass

MEDIA	Description		Dimesions in Inches		
	Item No.	Finish	W	H	D



3 vol. / 0,660 m3 / 100 Kg

MADISON Media Cabinet
 4x Doors
 3x Glass Shelves
 Lacquer Top & Metal Accents

70 7/8" 23 5/8" 19 5/8"

NATURAL EBONY		
MADI-3004/13	Polished Stainless Steel	
MADI-3004/14	Polished Plated Stainless Steel Colors	
MADI-3004/15	Brass	
TULIP WOOD		
MADI-3004/16	Polished Stainless Steel	
MADI-3004/17	Polished Plated Stainless Steel Colors	
MADI-3004/18	Brass	
UPCHARGE	IR Remote	
UPCHARGE	Marble Top	

BOOK SHELF

RIGHT



3 vol. / 0,421 m3 / 70 Kg

MADISON Book Shelf -RIGHT
 1x Drawer & Metal Plinth

23 5/8" 70 7/8" 15 3/8"

EUCALYPTUS PLAIN STAIN OR LACQUER		
MADI-3005/1	Polished Stainless Steel	
MADI-3005/2	Polished Plated Stainless Steel Colors	
MADI-3005/3	Brass	
EUCALYPTUS FRISE, ASH BURL OR NATURAL ROSEWOOD		
MADI-3005/4	Polished Stainless Steel	
MADI-3005/5	Polished Plated Stainless Steel Colors	
MADI-3005/6	Brass	
OAK OR WALNUT (5% or 30% SHEEN)		
MADI-3005/7	Polished Stainless Steel	
MADI-3005/8	Polished Plated Stainless Steel Colors	
MADI-3005/9	Brass	
RECONSTITUTED EBONY, OAK FUME, OR RECONSTITUTED ROSEWOOD		
MADI-3005/10	Polished Stainless Steel	
MADI-3005/11	Polished Plated Stainless Steel Colors	
MADI-3005/12	Brass	
NATURAL EBONY		
MADI-3005/13	Polished Stainless Steel	
MADI-3005/14	Polished Plated Stainless Steel Colors	
MADI-3005/15	Brass	
TULIP WOOD		
MADI-3005/16	Polished Stainless Steel	
MADI-3005/17	Polished Plated Stainless Steel Colors	
MADI-3005/18	Brass	

*** RECOMMENDED THAT
 UNIT BE ATTACHED TO
 WALL***

BOOK SHELF	Description		Dimesions in Inches		
	Item No.	Finish	W	H	D

LEFT



3 vol. / 0,421 m3 / 70 Kg

*** RECOMMENDED THAT UNIT BE ATTACHED TO WALL ***

MADISON Book Shelf - LEFT

1x Drawer & Metal Plinth

23 5/8" 70 7/8" 15 3/8"

EUCALYPTUS PLAIN STAIN OR LACQUER		
MADI-3006/1	Polished Stainless Steel	
MADI-3006/2	Polished Plated Stainless Steel Colors	
MADI-3006/3	Brass	
EUCALYPTUS FRISE, ASH BURL OR NATURAL ROSEWOOD		
MADI-3006/4	Polished Stainless Steel	
MADI-3006/5	Polished Plated Stainless Steel Colors	
MADI-3006/6	Brass	
OAK OR WALNUT (5% or 30% SHEEN)		
MADI-3006/7	Polished Stainless Steel	
MADI-3006/8	Polished Plated Stainless Steel Colors	
MADI-3006/9	Brass	
RECONSTITUTED EBONY, OAK FUME, OR RECONSTITUTED ROSEWOOD		
MADI-3006/10	Polished Stainless Steel	
MADI-3006/11	Polished Plated Stainless Steel Colors	
MADI-3006/12	Brass	
NATURAL EBONY		
MADI-3006/13	Polished Stainless Steel	
MADI-3006/14	Polished Plated Stainless Steel Colors	
MADI-3006/15	Brass	
TULIP WOOD		
MADI-3006/16	Polished Stainless Steel	
MADI-3006/17	Polished Plated Stainless Steel Colors	
MADI-3006/18	Brass	

OCCASIONAL

MADISON Console

2x Drawers

Lacquer Top & Metal Accents

55 1/8" 32 1/4" 13 3/4"



2 vol. / 0,401 m3 / 52 Kg

*** RECOMMENDED THAT UNIT BE ATTACHED TO WALL ***

EUCALYPTUS PLAIN STAIN OR LACQUER		
MADI-3008/1	Polished Stainless Steel	
MADI-3008/2	Polished Plated Stainless Steel Colors	
MADI-3008/3	Brass	
EUCALYPTUS FRISE, ASH BURL OR NATURAL ROSEWOOD		
MADI-3008/4	Polished Stainless Steel	
MADI-3008/5	Polished Plated Stainless Steel Colors	
MADI-3008/6	Brass	
OAK OR WALNUT (5% or 30% SHEEN)		
MADI-3008/7	Polished Stainless Steel	
MADI-3008/8	Polished Plated Stainless Steel Colors	
MADI-3008/9	Brass	
RECONSTITUTED EBONY, OAK FUME, OR RECONSTITUTED ROSEWOOD		
MADI-3008/10	Polished Stainless Steel	
MADI-3008/11	Polished Plated Stainless Steel Colors	
MADI-3008/12	Brass	

OCCASIONAL	Description		Dimensions in Inches		
	Item No.	Finish	W	H	D



2 vol. / 0,401 m3 / 52 Kg

*** RECOMMENDED THAT UNIT BE ATTACHED TO

MADISON Console
2x Drawers
Lacquer Top & Metal Accents

55 1/8" 32 1/4" 13 3/4"

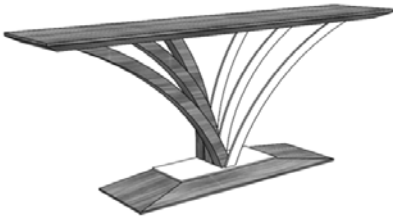
NATURAL EBONY		
MADI-3008/13	Polished Stainless Steel	
MADI-3008/14	Polished Plated Stainless Steel Colors	
MADI-3008/15	Brass	

TULIP WOOD		
MADI-3008/16	Polished Stainless Steel	
MADI-3008/17	Polished Plated Stainless Steel Colors	
MADI-3008/18	Brass	

UPCHARGE	Marble Top	
-----------------	------------	--

FAN Console
Metal Accents

63" 32 1/4" 13"



1 vol. / 0,405 m3 / 52 Kg

*** RECOMMENDED THAT UNIT BE ATTACHED TO WALL ***

EUCALYPTUS PLAIN STAIN OR LACQUER		
FAN-100/1	Polished Stainless Steel	
FAN-100/2	Polished Plated Stainless Steel Colors	
FAN-100/3	Brass	

EUCALYPTUS FRISE, ASH BURL OR NATURAL ROSEWOOD		
FAN-100/4	Polished Stainless Steel	
FAN-100/5	Polished Plated Stainless Steel Colors	
FAN-100/6	Brass	

OAK OR WALNUT (5% or 30% SHEEN)		
FAN-100/7	Polished Stainless Steel	
FAN-100/8	Polished Plated Stainless Steel Colors	
FAN-100/9	Brass	

RECONSTITUTED EBONY, OAK FUME, OR RECONSTITUTED ROSEWOOD		
FAN-100/10	Polished Stainless Steel	
FAN-100/11	Polished Plated Stainless Steel Colors	
FAN-100/12	Brass	

NATURAL EBONY		
FAN-100/13	Polished Stainless Steel	
FAN-100/14	Polished Plated Stainless Steel Colors	
FAN-100/15	Brass	

TULIP WOOD		
FAN-100/16	Polished Stainless Steel	
FAN-100/17	Polished Plated Stainless Steel Colors	
FAN-100/18	Brass	

OCCASIONAL	Description		Dimesions in Inches		
	Item No.	Finish	W	H	D

MADISON Coffee Table
Metal Accents

43 3/8" 18 1/8" 43 3/8"



LACQUER TOP W/ EUCALYPTUS PLAIN STAIN OR LACQUER LEGS					
MADI-3017/1	Polished Stainless Steel				
MADI-3017/2	Polished Plated Stainless Steel Colors				
MADI-3017/3	Brass				

MARBLE TOP TOP W/ EUCALYPTUS PLAIN STAIN OR LACQUER LEGS					
MADI-3017/4	Polished Stainless Steel				
MADI-3017/5	Polished Plated Stainless Steel Colors				
MADI-3017/6	Brass				

LACQUER TOP W/ EUCALYPTUS FRISE, ASH BURL OR NATURAL ROSEWOOD LEGS					
MADI-3017/7	Polished Stainless Steel				
MADI-3017/8	Polished Plated Stainless Steel Colors				
MADI-3017/9	Brass				

MARBLE TOP W/ EUCALYPTUS FRISE, ASH BURL OR NATURAL ROSEWOOD LEGS					
MADI-3017/10	Polished Stainless Steel				
MADI-3017/11	Polished Plated Stainless Steel Colors				
MADI-3017/12	Brass				

LACQUER TOP W/ OAK OR WALNUT (5% or 30% SHEEN) LEGS					
MADI-3017/13	Polished Stainless Steel				
MADI-3017/14	Polished Plated Stainless Steel Colors				
MADI-3017/15	Brass				

MARBLE TOP W/ OAK OR WALNUT (5% or 30% SHEEN) LEGS					
MADI-3017/16	Polished Stainless Steel				
MADI-3017/17	Polished Plated Stainless Steel Colors				
MADI-3017/18	Brass				

LACQUER TOP W/ RECONSTITUTED EBONY, OAK FUME, OR RECONSTITUTED ROSEWOOD LEGS					
MADI-3017/19	Polished Stainless Steel				
MADI-3017/20	Polished Plated Stainless Steel Colors				
MADI-3017/21	Brass				



MARBLE TOP W/ RECONSTITUTED EBONY, OAK FUME, OR RECONSTITUTED ROSEWOOD LEGS					
MADI-3017/22	Polished Stainless Steel				
MADI-3017/23	Polished Plated Stainless Steel Colors				
MADI-3017/24	Brass				

LACQUER TOP W/ NATURAL EBONY LEGS					
MADI-3017/25	Polished Stainless Steel				
MADI-3017/26	Polished Plated Stainless Steel Colors				
MADI-3017/27	Brass				

MARBLE TOP W/ NATURAL EBONY LEGS					
MADI-3017/28	Polished Stainless Steel				
MADI-3017/29	Polished Plated Stainless Steel Colors				
MADI-3017/30	Brass				

LACQUER TOP W/ TULIP WOOD LEGS					
MADI-3017/25	Polished Stainless Steel				
MADI-3017/26	Polished Plated Stainless Steel Colors				
MADI-3017/27	Brass				

MARBLE TOP W/ TULIP WOOD LEGS					
MADI-3017/28	Polished Stainless Steel				
MADI-3017/29	Polished Plated Stainless Steel Colors				
MADI-3017/30	Brass				

2 vol. / 0,479 m3 / 30 Kg

OCCASIONAL	Description		Dimesions in Inches		
	Item No.	Finish	W	H	D



2 vol. / 0,240 m3 / 8 Kg

MADISON End Table

Metal Accents

25 1/2" 22 1/2" 25 1/2"

EUCALYPTUS PLAIN STAIN OR LACQUER		
MADI-3009/1	Polished Stainless Steel	
MADI-3009/2	Polished Plated Stainless Steel Colors	
MADI-3009/3	Brass	

EUCALYPTUS FRISE, ASH BURL OR NATURAL ROSEWOOD		
MADI-3009/4	Polished Stainless Steel	
MADI-3009/5	Polished Plated Stainless Steel Colors	
MADI-3009/6	Brass	

OAK OR WALNUT (5% or 30% SHEEN)		
MADI-3009/7	Polished Stainless Steel	
MADI-3009/8	Polished Plated Stainless Steel Colors	
MADI-3009/9	Brass	

RECONSTITUTED EBONY, OAK FUME, OR RECONSTITUTED ROSEWOOD		
MADI-3009/10	Polished Stainless Steel	
MADI-3009/11	Polished Plated Stainless Steel Colors	
MADI-3009/12	Brass	

NATURAL EBONY		
MADI-3009/13	Polished Stainless Steel	
MADI-3009/14	Polished Plated Stainless Steel Colors	
MADI-3009/15	Brass	

TULIP WOOD		
MADI-3009/16	Polished Stainless Steel	
MADI-3009/17	Polished Plated Stainless Steel Colors	
MADI-3009/18	Brass	

MADISON Sofa End Table

Metal Accents

19 5/8" 22 1/2" 17 3/4"



2 vol. / 0,128 m3 / 12 Kg

EUCALYPTUS PLAIN STAIN OR LACQUER		
MADI-3010/1	Polished Stainless Steel	
MADI-3010/2	Polished Plated Stainless Steel Colors	
MADI-3010/3	Brass	

EUCALYPTUS FRISE, ASH BURL OR NATURAL ROSEWOOD		
MADI-3010/4	Polished Stainless Steel	
MADI-3010/5	Polished Plated Stainless Steel Colors	
MADI-3010/6	Brass	

OAK OR WALNUT (5% or 30% SHEEN)		
MADI-3010/7	Polished Stainless Steel	
MADI-3010/8	Polished Plated Stainless Steel Colors	
MADI-3010/9	Brass	

RECONSTITUTED EBONY, OAK FUME, OR RECONSTITUTED ROSEWOOD		
MADI-3010/10	Polished Stainless Steel	
MADI-3010/11	Polished Plated Stainless Steel Colors	
MADI-3010/12	Brass	

NATURAL EBONY		
MADI-3010/13	Polished Stainless Steel	
MADI-3010/14	Polished Plated Stainless Steel Colors	
MADI-3010/15	Brass	

TULIP WOOD		
MADI-3010/16	Polished Stainless Steel	
MADI-3010/17	Polished Plated Stainless Steel Colors	
MADI-3010/18	Brass	

OCCASIONAL	Description		Dimensions in Inches		
	Item No.	Finish	W	H	D

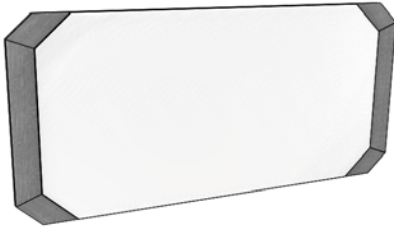


JADE End Table
Marble Base
Metal Column

15 3/4" 19 3/4" 15 3/4"

1 vol. / 0.056 m3 / 30 Kg

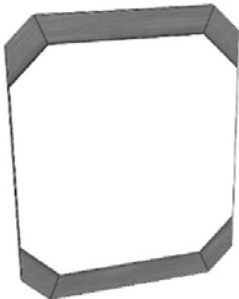
LACQUER TOP		
JADE-3020/1	Lacquer Top w/ Polished Stainless Steel	
JADE-3020/2	Lacquer Top w/ Polished Plated Stainless Steel	
JADE-3020/3	Lacquer Top w/ Brass	



MADISON Mirror

70 7/8" 35 1/2" 1"

FINISH OPTIONS		
MADI-3011/1	Eucalyptus Frise, Ash Burl or Natural Rosewood	
MADI-3011/2	Tulip Wood	
MADI-3011/3	Reconstituted Ebony, Oak Fume or Reconstituted Rosewood	
MADI-3011/4	Natural Ebony	
MADI-3011/5	Eucalyptus Stain or Lacquer	
MADI-3011/6	Oak or Walnut (5% or 30% Sheen)	



MADISON Mirror

33 1/2" 43 3/8" 1"

FINISH OPTIONS		
MADI-3012/1	Eucalyptus Frise, Ash Burl or Natural Rosewood	
MADI-3012/2	Tulip Wood	
MADI-3012/3	Reconstituted Ebony, Oak Fume or Reconstituted Rosewood	
MADI-3012/4	Natural Ebony	
MADI-3012/5	Eucalyptus Stain or Lacquer	
MADI-3012/6	Oak or Walnut (5% or 30% Sheen)	

1 vol. / 0,022 m3 / 39 Kg

PLEASE NOTE: It is the responsibility of the customer to ensure that the correct hardware is used when hanging the mirror/wall modules; manufacturer cannot supply hardware for every type of situation.