

# MAJESTIC COLLECTION

BY ALEAL



**PLANUM**<sup>®</sup>  
F U R N I T U R E

Swedesford Corporate Center  
619 B Swedesford Road  
Frazer, PA 19355

Email: [info@planumfurniture.com](mailto:info@planumfurniture.com)  
Website: [planumfurniture.com](http://planumfurniture.com)

Tel : 610/251-2120  
Tel : 800/343-0042  
Fax : 610/251-2290

# ALEAL Finishes

## LACQUER FINISHES



LC01 BLACK



LC02 WHITE



LC07 BRICK RED



LC11 TOMATO RED



LC12 SLATE GRAY



LC13 IVORY



LC14 METALLIC  
GRAY



LC15 GRAY BEIGE



LC16 FOG GRAY



LC18 METALLIC  
TAUPE



LC19 CAMOUFLAGE



LC20 GUN  
METAL GRAY



LC21 MUSTARD  
YELLOW



LC22 ASH GRAY



LC23 SILVER  
GRAY



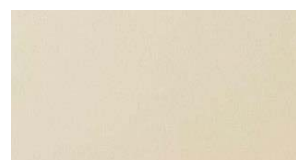
LC26 BURGANDY



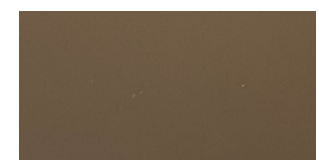
LC27 RUBY



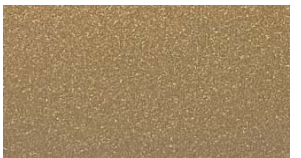
LC28 CAPPUCCINO



LC36 PEARL



LC37 PEWTER



LC38 PALOMINO



LC39 PETROL BLUE



BRONZE



SILVER



GOLD



CHAMPAGNE

**PLEASE NOTE ABOVE LACQUERS ARE AVAILABLE IN THE BELOW SHEENS:**

5% MATTE OR 30% SEMIGLOSS - USE MATTE PRICING

100% SHEEN - USE HIGH GLOSS PRICING

# ALEAL Finishes

## OAK & WALNUT FINISHES



BLACK OAK CV01



CHOCOLATE OAK  
CV02



SLATE GRAY OAK  
CV03



IVORY OAK CV12



METALLIC TAUPE  
OAK CV11



METALLIC GRAY  
OAK CV10



OPAL GRAY OAK  
CVL15



GRAY BEIGE OAK  
CV09



WHITE OAK CV04



CHERRY OAK CV05



NATURAL OAK CV06



STEEL GRAY OAK  
CVL14



SMOOTH CHOCOLATE  
OAK CVL16



CVL19



RUSTIC OAK CVL17



WILD OAK CV06



WALNUT NG01

**PLEASE NOTE ABOVE WOODS ARE AVAILABLE IN THE BELOW SHEENS:**

5% MATTE OR 30% SEMIGLOSS - USE MATTE PRICING

\*THEY ARE NOT AVAILABLE IN 100% SHEEN HIGH GLOSS\*\*

# ALEAL Finishes

## EBONY



RECONSTITUTED  
EBONY



NATURAL EBONY

## ROSEWOOD



RECONSTITUTED  
ROSEWOOD

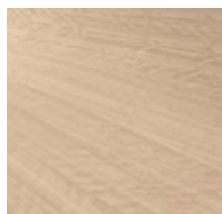


NATURAL  
ROSEWOOD

## EUCALYPTUS FRISE

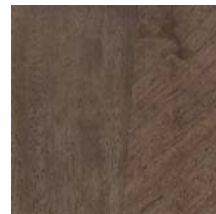


GREY EUCALYPTUS



POLAR EUCALYPTUS

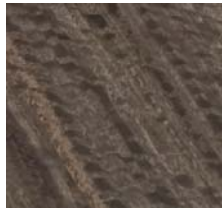
## PLAIN STAINED EUCALYPTUS



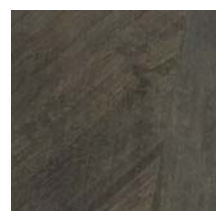
SOFT PLUM



ARGENTO



ESPRESSO EUCALYPTUS



SOFT GREY

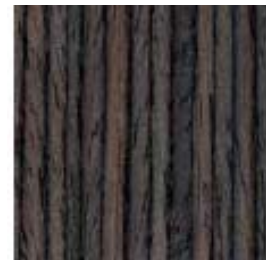


TOFFEE

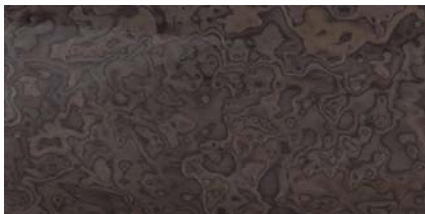
## TULP WOOD



## OAK FUME



## ASH BURL



BURGANDY



LIGHT GRAY

**PLEASE NOTE ABOVE WOODS ARE AVAILABLE IN THE BELOW SHEENS:**

5% MATTE OR 30% SEMIGLOSS - USE MATTE PRICING

100% SHEEN - USE HIGH GLOSS PRICING

# ALEAL Finishes

## STAINLESS STEEL



POLISHED STAINLESS  
STEEL



BRUSHED STAINLESS  
STEEL

## BRASS



BRUSHED BRASS



BRUSHED ANTIQUE BRASS

## POLISHED PLATED STAINLESS STEEL



COPPER



NICKEL NOIR



GOLD

## CERAMIC FINISHES



ARENA



ARTIC WHITE



AVORIO



BARRO



BASALT BEIGE



BASALT BLACK



BELGIAN BLUE



BASALT GREY



CEMENT



IRON COPPER



IRON CORTEN



IRON GREY



IRON MOSS



LAVA



PERLA

# ALEAL Finishes

## SPECIAL CERAMIC FINISHES (UPCHARGE)



Estatuario



Silk Gris

### ESTATUARIO

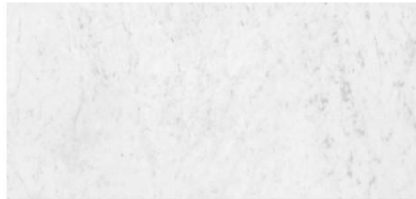
Measure: 2600 x 1200mm

Thickness / Finish: 5.6mm gloss / 3.5mm matte

### CARRARA

Measure: 2600 x 1200mm

Thickness / Finish: 5.6mm gloss or matte / 3.5mm matte



Carrara



Silk Beige

### CALACATA

Measure: 2600 x 1200mm

Thickness / Finish: 5.6mm gloss / 3.5mm matte

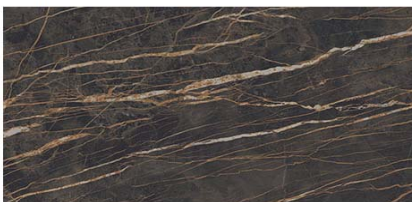
### SILK GRIS

Measure: 2600 x 1200mm

Thickness / Finish: 5.6mm gloss or matte



Calacata



Thunder Nigth

### SILK BEIGE

Measure: 2600 x 1200mm

Thickness / Finish: 5.6mm gloss or matte

### THUNDER NIGH

Measure: 3000 x 1000mm

Thickness / Finish: 3.5mm matte

### PLEASE NOTE :

- To place ceramics on Extension dining tables please check first with us.
- Measures bigger than mentioned above please check with us.
- Isn't possible to buy these ceramics cut. We need to buy the entire piece even for a coffee table. 'Waste' can be sent back with order
- Reach out to office for pricing

## STONE FINISHES



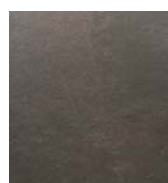
VS01ST  
AUTUMN STANDARD



VS02ST  
AUTUMN GREY



VS03ST  
AUTUMN WHITE



VS05ST  
MULTI COLOR



VS07ST  
GOLD STONE



VS09ST  
TAN



VS10ST  
D. BLACK



VS11ST  
BLACK



VS12ST  
CUPRUM



VS16ST  
D. GREEN



VS20ST  
BLAZING COPPER



VS21ST  
GALAXY



VS22ST  
SILVERY

# TABLE OF CONTENTS

	<u>PAGE #</u>
BEDROOM	8-13
DINING TABLE	14-18
SIDEBOARD	18-19
VITRINE	19
BAR	20-21
MEDIA	21-22
WALL MODULE	22
DESK	22-23
BOOKSHELF	23-25
OCCASIONAL	26

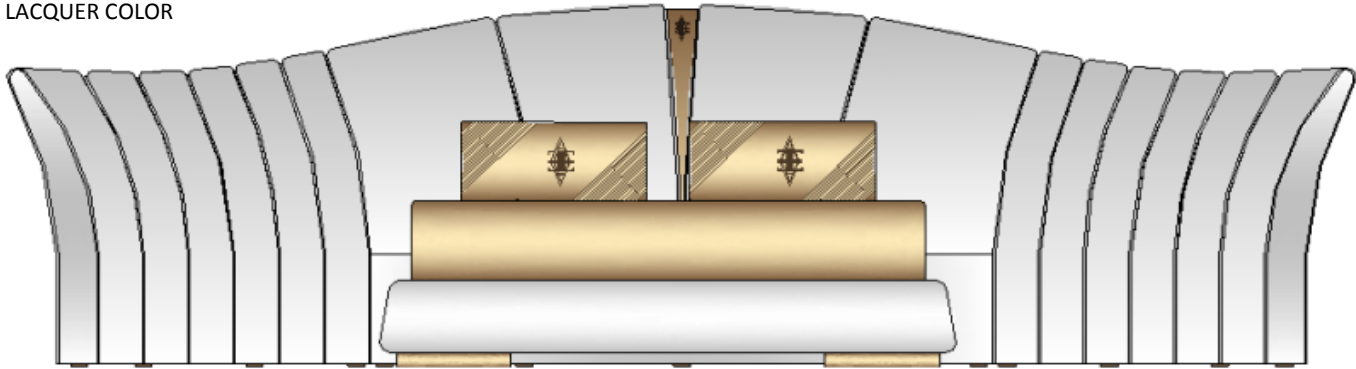
MAJESTIC Bed	Description		Dimensions in Inches		
	Item No.	Finish	W	H	D

**FINISH SPECIFICATION:**

- UPHOLSTERED HEADBOARD & BEDFRAME
- ALEAL LOGO IN CENTER OF HEADBOARD. CAN BE REMOVED - MUST NOTE ON ORDER
- FEET AVAILABLE IN ANY WOOD STAIN OR LACQUER COLOR

**PLEASE NOTE:**

- WOOD FEET ARE SOLID ASH; WHEN STAINED IN ANY OAK/WALNUT WOOD COLOR
- WOOD FEET ARE SOLID BEECHWOOD; WHEN STAINED IN ANY EUCALYPTUS COLOR



**MAJESTIC Queen Size Bed w/ Slats**

163 5/8"      49 1/4"      93"

<b>FEET FINISH: WOOD (ANY SPECIES)</b>	<b>MAJE-110/AB1</b>	Grade A/B	
	<b>MAJE-110/CD1</b>	Grade C/D & COM	
	<b>MAJE-110/E1</b>	Grade E/ Mastroto Leather/ Ultrasuede	
	<b>MAJE-110/SUP1</b>	<i>Superior Leather Grade SUP</i>	

C.O.M Requirement for 55"W plain fabric is 9 yards

**MAJESTIC King Size Bed w/ Slats**

179 1/2"      49 1/4"      93"

<b>FEET FINISH: WOOD (ANY SPECIES)</b>	<b>MAJE-111/AB1</b>	Grade A/B	
	<b>MAJE-111/CD1</b>	Grade C/D & COM	
	<b>MAJE-111/E1</b>	Grade E/ Mastroto Leather/ Ultrasuede	
	<b>MAJE-111/SUP1</b>	<i>Superior Leather Grade SUP</i>	

C.O.M Requirement for 55"W plain fabric is 13 1/2 yards

**MAJESTIC California King Size Bed w/ Slats**

175 5/8"      49 1/4"      96 7/8"

<b>FEET FINISH: WOOD (ANY SPECIES)</b>	<b>MAJE-112/AB1</b>	Grade A/B	
	<b>MAJE-112/CD1</b>	Grade C/D & COM	
	<b>MAJE-112/E1</b>	Grade E/ Mastroto Leather/ Ultrasuede	
	<b>MAJE-112/SUP1</b>	<i>Superior Leather Grade SUP</i>	

C.O.M Requirement for 55"W plain fabric is 11 yards

<b>UPCHARGE</b>	<i>Center of headboard with leather detail</i>	
-----------------	--	--



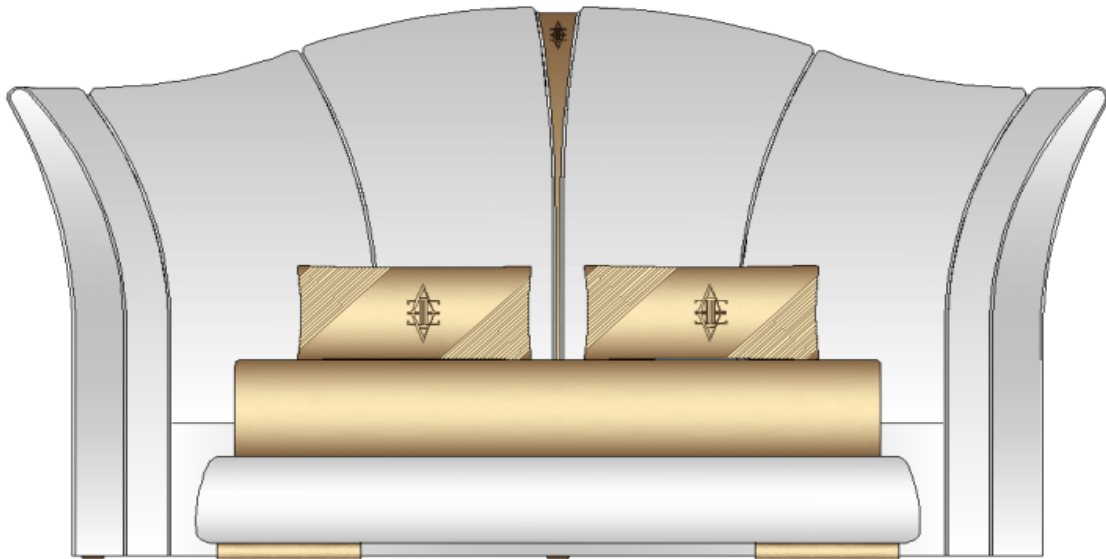
MAJESTIC B Bed	Description		Dimensions in Inches		
	Item No.	Finish	W	H	D

**FINISH SPECIFICATION:**

- UPHOLSTERED HEADBOARD & BEDFRAME
- ALEAL LOGO IN CENTER OF HEADBOARD. CAN BE REMOVED - MUST NOTE ON ORDER
- FEET AVAILABLE IN ANY WOOD STAIN OR LACQUER COLOR

**PLEASE NOTE:**

- WOOD FEET ARE SOLID ASH; WHEN STAINED IN ANY OAK/WALNUT WOOD COLOR
- WOOD FEET ARE SOLID BEECHWOOD; WHEN STAINED IN ANY EUCALYPTUS COLOR



**MAJESTIC B Queen Size Bed w/ Slats**

108 1/2"      67"      93"

<b>FEET FINISH: WOOD (ANY SPECIES)</b>	<b>MAJE-113/AB1</b>	Grade A/B	
	<b>MAJE-113/CD1</b>	Grade C/D & COM	
	<b>MAJE-113/E1</b>	Grade E/ Mastrotto Leather/ Ultrasuede	
	<b>MAJE-113/SUP1</b>	<i>Superior Leather Grade SUP</i>	

C.O.M Requirement for 55"W plain fabric is 7 yards

**MAJESTIC B King Size Bed w/ Slats**

124 1/8"      67"      93"

<b>FEET FINISH: WOOD (ANY SPECIES)</b>	<b>MAJE-114/AB1</b>	Grade A/B	
	<b>MAJE-114/CD1</b>	Grade C/D & COM	
	<b>MAJE-114/E1</b>	Grade E/ Mastrotto Leather/ Ultrasuede	
	<b>MAJE-114/SUP1</b>	<i>Superior Leather Grade SUP</i>	

C.O.M Requirement for 55"W plain fabric is 9 1/2 yards

**MAJESTIC B California King Size Bed w/ Slats**

120"      67"      96 7/8"

<b>FEET FINISH: WOOD (ANY SPECIES)</b>	<b>MAJE-115/AB1</b>	Grade A/B	
	<b>MAJE-115/CD1</b>	Grade C/D & COM	
	<b>MAJE-115/E1</b>	Grade E/ Mastrotto Leather/ Ultrasuede	
	<b>MAJE-115/SUP1</b>	<i>Superior Leather Grade SUP</i>	

C.O.M Requirement for 55"W plain fabric is 8 1/4 yards

<b>UPCHARGE</b>	<i>Center of headboard with leather detail</i>	
-----------------	--	--

MAJESTIC C Bed	Description		Dimensions in Inches		
	Item No.	Finish	W	H	D

**FINISH SPECIFICATION:**

-UPHOLSTERED HEADBOARD & BEDFRAME

-POLISHED STAINLESS STEEL HEADBOARD  
DETAILS

-FEET AVAILABLE IN ANY LACQUER COLOR



**MAJESTIC C Queen Size Bed w/ Slats**

73"      70 7/8"      87 1/2"

<b>MAJE-116/AB1</b>	Grade A/B	
<b>MAJE-116/CD1</b>	Grade C/D & COM	
<b>MAJE-116/E1</b>	Grade E/ Mastroto Leather/ Ultrasuede	
<b>MAJE-116/SUP1</b>	Superior Leather Grade SUP	

**MAJESTIC C King Size Bed w/ Slats**

89"      70 7/8"      87 1/2"

<b>MAJE-117/AB1</b>	Grade A/B	
<b>MAJE-117/CD1</b>	Grade C/D & COM	
<b>MAJE-117/E1</b>	Grade E/ Mastroto Leather/ Ultrasuede	
<b>MAJE-117/SUP1</b>	Superior Leather Grade SUP	

**MAJESTIC C California King Size Bed w/ Slats**

85"      70 7/8"      91 3/8"

<b>MAJE-118/AB1</b>	Grade A/B	
<b>MAJE-118/CD1</b>	Grade C/D & COM	
<b>MAJE-118/E1</b>	Grade E/ Mastroto Leather/ Ultrasuede	
<b>MAJE-118/SUP1</b>	Superior Leather Grade SUP	

<b>UPCHARGE</b>	Upcharge for Polished Plated Stainless Steel: Gold, Copper, Nickel Noir	
-----------------	---	--

MAJESTIC C Headboard	Description		Dimensions in Inches		
	Item No.	Finish	W	H	D

**FINISH SPECIFICATION:**

-UPHOLSTERED HEADBOARD

-POLISHED STAINLESS STEEL HEADBOARD  
DETAILS



**MAJESTIC C Queen Size Headboard ONLY**

		73"	70 7/8"	87 1/2"
<b>MAJE-119/AB1</b>	Grade A/B			
<b>MAJE-119/CD1</b>	Grade C/D & COM			
<b>MAJE-119/E1</b>	Grade E/ Mastrotto Leather/ Ultrasuede			
<b>MAJE-119/SUP1</b>	<i>Superior Leather Grade SUP</i>			

**MAJESTIC C King Size Headboard ONLY**

		89"	70 7/8"	87 1/2"
<b>MAJE-120/AB1</b>	Grade A/B			
<b>MAJE-120/CD1</b>	Grade C/D & COM			
<b>MAJE-120/E1</b>	Grade E/ Mastrotto Leather/ Ultrasuede			
<b>MAJE-120/SUP1</b>	<i>Superior Leather Grade SUP</i>			

**MAJESTIC C California King Size Headboard ONLY**

		85"	70 7/8"	91 3/8"
<b>MAJE-121/AB1</b>	Grade A/B			
<b>MAJE-121/CD1</b>	Grade C/D & COM			
<b>MAJE-121/E1</b>	Grade E/ Mastrotto Leather/ Ultrasuede			
<b>MAJE-121/SUP1</b>	<i>Superior Leather Grade SUP</i>			

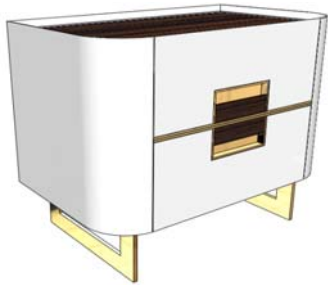
<b>UPCHARGE</b>	Upcharge for Polished Plated Stainless Steel: Gold, Copper, Nickel Noir
-----------------	---

# MAJESTIC Bedroom

Description		Dimensions in Inches		
Item No.	Finish	W	H	D

**2 Drawer Night Stand**  
Metal Feet & Handle Detail

27 1/2"      23 5/8"      17"



2 vol. / 1,167 m3 / 38 kg

**NATURAL EBONY TOP & HANDLE DETAIL**

<b>MAJE-102/1</b>	Lacquer Structure w/ Polished Stainless Steel
<b>MAJE-102/2</b>	Lacquer w/ Polished Plated Stainless Steel
<b>MAJE-102/3</b>	Lacquer w/ Brass

**OAK FUME, RECON. EBONY OR EUCALYPTUS FRISE TOP & HANDLE DETAIL**

<b>MAJE-102/4</b>	Lacquer Structure w/ Polished Stainless Steel
<b>MAJE-102/5</b>	Lacquer w/ Polished Plated Stainless Steel
<b>MAJE-102/6</b>	Lacquer w/ Brass

**PLAIN EUCALYPTUS STAIN TOP & HANDLE DETAIL**

<b>MAJE-102/7</b>	Lacquer Structure w/ Polished Stainless Steel
<b>MAJE-102/8</b>	Lacquer w/ Polished Plated Stainless Steel
<b>MAJE-102/9</b>	Lacquer w/ Brass

**OAK OR WALNUT TOP & HANDLE DETAIL**

<b>MAJE-102/10</b>	Lacquer Structure w/ Polished Stainless Steel
<b>MAJE-102/11</b>	Lacquer w/ Polished Plated Stainless Steel
<b>MAJE-102/12</b>	Lacquer w/ Brass

**6 Drawer Double Dresser**  
Metal Feet & Handle Detail

78 3/4"      34 5/8"      19 5/8"



2 vol. / 0,844 m3 / 138 kg

**NATURAL EBONY TOP & HANDLE DETAIL**

<b>MAJE-107/1</b>	Lacquer Structure w/ Polished Stainless Steel
<b>MAJE-107/2</b>	Lacquer w/ Polished Plated Stainless Steel
<b>MAJE-107/3</b>	Lacquer w/ Brass

**OAK FUME, RECON. EBONY OR EUCALYPTUS FRISE TOP & HANDLE DETAIL**

<b>MAJE-107/4</b>	Lacquer Structure w/ Polished Stainless Steel
<b>MAJE-107/5</b>	Lacquer w/ Polished Plated Stainless Steel
<b>MAJE-107/6</b>	Lacquer w/ Brass

**PLAIN EUCALYPTUS STAIN TOP & HANDLE DETAIL**

<b>MAJE-107/7</b>	Lacquer Structure w/ Polished Stainless Steel
<b>MAJE-107/8</b>	Lacquer w/ Polished Plated Stainless Steel
<b>MAJE-107/9</b>	Lacquer w/ Brass

**OAK OR WALNUT TOP & HANDLE DETAIL**

<b>MAJE-107/10</b>	Lacquer Structure w/ Polished Stainless Steel
<b>MAJE-107/11</b>	Lacquer w/ Polished Plated Stainless Steel
<b>MAJE-107/12</b>	Lacquer w/ Brass

MAJESTIC Bedroom	Description		Dimesions in Inches		
	Item No.	Finish	W	H	D



**Upholstered Bench**

Lacquer Plinth

55 1/8"

16 1/2"

17 3/4"

<b>MAJE-122/AB</b>	Grade A/B	
<b>MAJE-122/CD</b>	Grade C/D & COM	
<b>MAJE-122/E</b>	Grade E/ Mastrotto Leather/ Ultrasuede	
<b>MAJE-122/SUP</b>	<i>Superior Leather Grade SUP</i>	

\*\*\*Please note: Leather Option comes with seam down the middle\*\*

1 vol. / 0,265 m3 / 40 kg

# DINING TABLE

Description		Dimensions in Inches		
Item No.	Finish	W	H	D

**MAJESTIC Dining Table**  
Lacquer Top & Base  
Metal Apron/Column/Lower Base Details

118 1/8"      30"      47 1/4"



2 vol. / 2.225 m3 / 286 Kg

### STONE TOP DETAIL & COLUMN

<b>MAJE-147/1</b>	Polished Stainless Steel	
<b>MAJE-147/2</b>	Polished Plated Stainless Steel	
<b>MAJE-147/3</b>	Brass	

### NATURAL EBONY OR NATURAL ROSEWOOD TOP DETAIL & COLUMN

<b>MAJE-147/4</b>	Polished Stainless Steel	
<b>MAJE-147/5</b>	Polished Plated Stainless Steel	
<b>MAJE-147/6</b>	Brass	

### OAK FUME, RECON. EBONY, RECON. ROSEWOOD OR EUCALYPTUS FRISE TOP DETAIL & COLUMN

<b>MAJE-147/7</b>	Polished Stainless Steel	
<b>MAJE-147/8</b>	Polished Plated Stainless Steel	
<b>MAJE-147/9</b>	Brass	

### PLAIN EUCALYPTUS STAIN TOP DETAIL & COLUMN

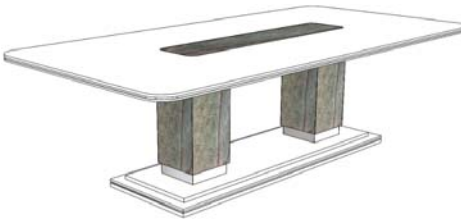
<b>MAJE-147/10</b>	Polished Stainless Steel	
<b>MAJE-147/11</b>	Polished Plated Stainless Steel	
<b>MAJE-147/12</b>	Brass	

### OAK OR WALNUT TOP DETAIL & COLUMN

<b>MAJE-147/13</b>	Polished Stainless Steel	
<b>MAJE-147/14</b>	Polished Plated Stainless Steel	
<b>MAJE-147/15</b>	Brass	

**MAJESTIC Dining Table**  
Lacquer Top & Base  
Metal Apron/Column/Lower Base Details

94 1/2"      30"      47 1/4"



2 vol. / 1.558 m3 / 206 Kg

### STONE TOP DETAIL & COLUMN

<b>MAJE-152/1</b>	Polished Stainless Steel	
<b>MAJE-152/2</b>	Polished Plated Stainless Steel	
<b>MAJE-152/3</b>	Brass	

### NATURAL EBONY OR NATURAL ROSEWOOD TOP DETAIL & COLUMN

<b>MAJE-152/4</b>	Polished Stainless Steel	
<b>MAJE-152/5</b>	Polished Plated Stainless Steel	
<b>MAJE-152/6</b>	Brass	

### OAK FUME, RECON. EBONY, RECON. ROSEWOOD OR EUCALYPTUS FRISE TOP DETAIL & COLUMN

<b>MAJE-152/7</b>	Polished Stainless Steel	
<b>MAJE-152/8</b>	Polished Plated Stainless Steel	
<b>MAJE-152/9</b>	Brass	

### PLAIN EUCALYPTUS STAIN TOP DETAIL & COLUMN

<b>MAJE-152/10</b>	Polished Stainless Steel	
<b>MAJE-152/11</b>	Polished Plated Stainless Steel	
<b>MAJE-152/12</b>	Brass	

### OAK OR WALNUT TOP DETAIL & COLUMN

<b>MAJE-152/13</b>	Polished Stainless Steel	
<b>MAJE-152/14</b>	Polished Plated Stainless Steel	
<b>MAJE-152/15</b>	Brass	

# DINING TABLE

Description		Dimensions in Inches		
Item No.	Finish	W	H	D

## MAJESTIC Dining Table

Lacquer Top & Base  
Metal Apron/Column/Lower Base Details

86 5/8"      30"      47 1/4"

### STONE TOP DETAIL & COLUMN

MAJE-157/1	Polished Stainless Steel		
MAJE-157/2	Polished Plated Stainless Steel		
MAJE-157/3	Brass		

### NATURAL EBONY OR NATURAL ROSEWOOD TOP DETAIL & COLUMN

MAJE-157/4	Polished Stainless Steel		
MAJE-157/5	Polished Plated Stainless Steel		
MAJE-157/6	Brass		

### OAK FUME, RECON. EBONY, RECON. ROSEWOOD OR EUCALYPTUS FRISE TOP DETAIL & COLUMN

MAJE-157/7	Polished Stainless Steel		
MAJE-157/8	Polished Plated Stainless Steel		
MAJE-157/9	Brass		

### PLAIN EUCALYPTUS STAIN TOP DETAIL & COLUMN

MAJE-157/10	Polished Stainless Steel		
MAJE-157/11	Polished Plated Stainless Steel		
MAJE-157/12	Brass		

### OAK OR WALNUT TOP DETAIL & COLUMN

MAJE-157/13	Polished Stainless Steel		
MAJE-157/14	Polished Plated Stainless Steel		
MAJE-157/15	Brass		

## MAJESTIC Extension Dining Table

Lacquer Column , Base & Extension Ends  
Metal/Column/Lower Base Details

94 1/2"      30"      43 3/8"

w/ 2x 19 5/8" Leafs

### NATURAL EBONY OR NATURAL ROSEWOOD TOP & EXTENSION

MAJE-194/1	Polished Stainless Steel		
MAJE-194/2	Polished Plated Stainless Steel		
MAJE-194/3	Brass		

### RECON. EBONY OR RECON. ROSEWOOD TOP & EXTENSION

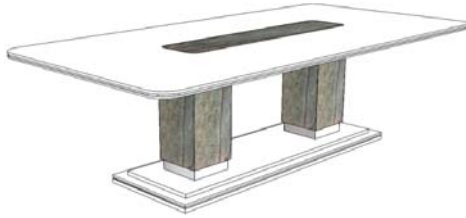
MAJE-194/4	Polished Stainless Steel		
MAJE-194/5	Polished Plated Stainless Steel		
MAJE-194/6	Brass		

### PLAIN EUCALYPTUS STAIN TOP & EXTENSION

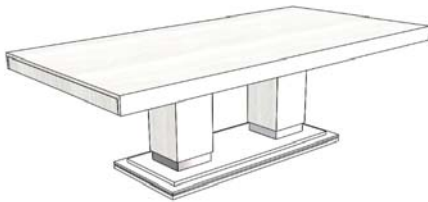
MAJE-194/7	Polished Stainless Steel		
MAJE-194/8	Polished Plated Stainless Steel		
MAJE-194/9	Brass		

### OAK OR WALNUT TOP & EXTENSION

MAJE-194/10	Polished Stainless Steel		
MAJE-194/11	Polished Plated Stainless Steel		
MAJE-194/12	Brass		



2 vol. / 1.527 m3 / 195 Kg



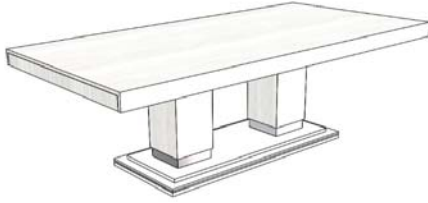
# DINING TABLE

Description		Dimensions in Inches		
Item No.	Finish	W	H	D

## MAJESTIC Extension Dining Table

Lacquer Column , Base & Extension Ends  
Metal/Column/Lower Base Details

94 1/2"      30"      43 3/8"  
w/ 2x 19 5/8" Leafs



### ALL LACQUER

<b>MAJE-194/13</b>	Polished Stainless Steel	
<b>MAJE-194/14</b>	Polished Plated Stainless Steel	
<b>MAJE-194/15</b>	Brass	

### EUCALYPTUS FRISE OR OAK FUME TOP & EXTENSION

<b>MAJE-194/16</b>	Polished Stainless Steel	
<b>MAJE-194/17</b>	Polished Plated Stainless Steel	
<b>MAJE-194/18</b>	Brass	

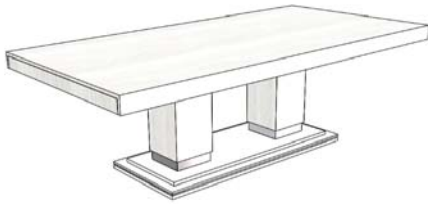
### TOP DETAIL OPTIONS

<b>UPCHARGE</b>	Top Detail in Stone	
<b>UPCHARGE</b>	Top Detail & Column in Stone	

## MAJESTIC Extension Dining Table

Lacquer Column & Base  
Metal Apron/Column/Lower Base Details

86 5/8"      30"      43 3/8"  
w/ 2x 19 5/8" Leafs



### NATURAL EBONY OR NATURAL ROSEWOOD TOP & EXTENSION

<b>MAJE-195/1</b>	Polished Stainless Steel	
<b>MAJE-195/2</b>	Polished Plated Stainless Steel	
<b>MAJE-195/3</b>	Brass	

### RECON. EBONY OR RECON. ROSEWOOD TOP & EXTENSION

<b>MAJE-195/4</b>	Polished Stainless Steel	
<b>MAJE-195/5</b>	Polished Plated Stainless Steel	
<b>MAJE-195/6</b>	Brass	

### PLAIN EUCALYPTUS STAIN TOP & EXTENSION

<b>MAJE-195/7</b>	Polished Stainless Steel	
<b>MAJE-195/8</b>	Polished Plated Stainless Steel	
<b>MAJE-195/9</b>	Brass	

### OAK OR WALNUT TOP & EXTENSION

<b>MAJE-195/10</b>	Polished Stainless Steel	
<b>MAJE-195/11</b>	Polished Plated Stainless Steel	
<b>MAJE-195/12</b>	Brass	

### EUCALYPTUS FRISE OR OAK FUME TOP & EXTENSION

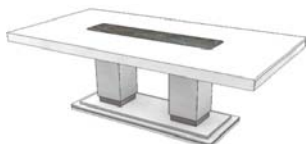
<b>MAJE-195/13</b>	Polished Stainless Steel	
<b>MAJE-195/14</b>	Polished Plated Stainless Steel	
<b>MAJE-195/15</b>	Brass	

### ALL LACQUER

<b>MAJE-195/16</b>	Polished Stainless Steel	
<b>MAJE-195/17</b>	Polished Plated Stainless Steel	
<b>MAJE-195/18</b>	Brass	

### TOP DETAIL OPTIONS

<b>UPCHARGE</b>	Top Detail in Stone	
<b>UPCHARGE</b>	Top Detail & Column in Stone	





# DINING TABLE

Description		Dimensions in Inches		
Item No.	Finish	W	H	D

## MAJESTIC Extension Dining Table

Lacquer Column & Base  
Metal Apron/Column/Lower Base Details

78 3/4"      30"      39 3/8"  
w/ 2x 15 3/4" Leafs



### NATURAL EBONY OR NATURAL ROSEWOOD TOP & EXTENSION

MAJE-196/1	Polished Stainless Steel	
MAJE-196/2	Polished Plated Stainless Steel	
MAJE-196/3	Brass	

### RECON. EBONY OR RECON. ROSEWOOD TOP & EXTENSION

MAJE-196/4	Polished Stainless Steel	
MAJE-196/5	Polished Plated Stainless Steel	
MAJE-196/6	Brass	

### PLAIN EUCALYPTUS STAIN TOP & EXTENSION

MAJE-196/7	Polished Stainless Steel	
MAJE-196/8	Polished Plated Stainless Steel	
MAJE-196/9	Brass	

### OAK OR WALNUT TOP W/ EXTENSION ENDS IN LACQUER

MAJE-196/10	Polished Stainless Steel	
MAJE-196/11	Polished Plated Stainless Steel	
MAJE-196/12	Brass	

### EUCALYPTUS FRISE OR OAK FUME TOP & EXTENSION

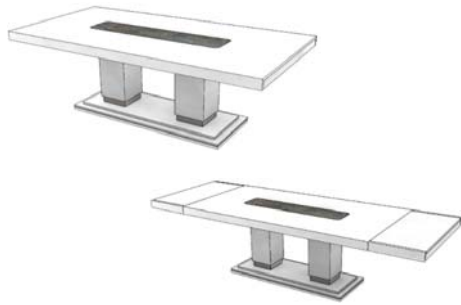
MAJE-196/13	Polished Stainless Steel	
MAJE-196/14	Polished Plated Stainless Steel	
MAJE-196/15	Brass	

### ALL LACQUER

MAJE-196/16	Polished Stainless Steel	
MAJE-196/17	Polished Plated Stainless Steel	
MAJE-196/18	Brass	

### TOP DETAIL OPTIONS

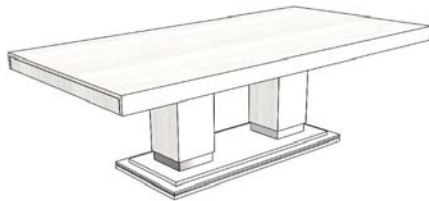
UPCHARGE	Top Detail in Stone	
UPCHARGE	Top Detail & Column in Stone	



## MAJESTIC Extension Dining Table

Lacquer Column & Base  
Metal Apron/Column/Lower Base Details

70 7/8"      30"      39 3/8"  
w/ 2x 15 3/4" Leafs



### NATURAL EBONY OR NATURAL ROSEWOOD TOP & EXTENSION

MAJE-197/1	Polished Stainless Steel	
MAJE-197/2	Polished Plated Stainless Steel	
MAJE-197/3	Brass	

### RECON. EBONY OR RECON. ROSEWOOD TOP & EXTENSION

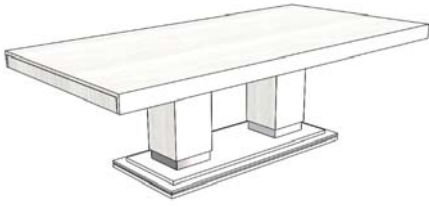
MAJE-197/4	Polished Stainless Steel	
MAJE-197/5	Polished Plated Stainless Steel	
MAJE-197/6	Brass	

### PLAIN EUCALYPTUS STAIN TOP & EXTENSION

MAJE-197/7	Polished Stainless Steel	
MAJE-197/8	Polished Plated Stainless Steel	
MAJE-197/9	Brass	

## DINING TABLE

Description		Dimensions in Inches		
Item No.	Finish	W	H	D



### MAJESTIC Extension Dining Table

Lacquer Column & Base  
Metal Apron/Column/Lower Base Details

70 7/8"      30"      39 3/8"  
w/ 2x 15 3/4" Leafs

#### OAK OR WALNUT TOP W/ EXTENSION ENDS IN LACQUER

<b>MAJE-197/10</b>	Polished Stainless Steel	
<b>MAJE-197/11</b>	Polished Plated Stainless Steel	
<b>MAJE-197/12</b>	Brass	

#### EUCALYPTUS FRISE OR OAK FUME TOP & EXTENSION

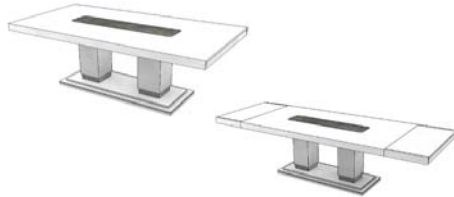
<b>MAJE-197/13</b>	Polished Stainless Steel	
<b>MAJE-197/14</b>	Polished Plated Stainless Steel	
<b>MAJE-197/15</b>	Brass	

#### ALL LACQUER

<b>MAJE-197/16</b>	Polished Stainless Steel	
<b>MAJE-197/17</b>	Polished Plated Stainless Steel	
<b>MAJE-197/18</b>	Brass	

#### TOP DETAIL OPTIONS

<b>UPCHARGE</b>	Top Detail in Stone	
<b>UPCHARGE</b>	Top Detail & Column in Stone	



## SIDEBOARD

### MAJESTIC Sideboard (Big Version)

4x Doors  
1x Interior Drawer & 2x Lacquer Shelves  
Metal Feet & Handle Detail  
Lacquer Structure

86 5/8"      35 1/2"      21 5/8"

#### STONE TOP & HANDLE DETAIL

<b>MAJE-124/1</b>	Polished Stainless Steel Feet & Handle	
<b>MAJE-124/2</b>	Polished Plated Stainless Steel Feet & Handle	
<b>MAJE-124/3</b>	Brass Feet & Handle	

#### NATURAL EBONY OR NATURAL ROSEWOOD TOP & HANDLE DETAIL

<b>MAJE-124/4</b>	Polished Stainless Steel Feet & Handle	
<b>MAJE-124/5</b>	Polished Plated Stainless Steel Feet & Handle	
<b>MAJE-124/6</b>	Brass Feet & Handle	

#### OAK FUME, RECON. EBONY, RECON. ROSEWOOD OR EUCALYPTUS FRISE TOP & HANDLE DETAIL

<b>MAJE-124/7</b>	Polished Stainless Steel Feet & Handle	
<b>MAJE-124/8</b>	Polished Plated Stainless Steel Feet & Handle	
<b>MAJE-124/9</b>	Brass Feet & Handle	

#### PLAIN EUCALYPTUS STAIN TOP & HANDLE DETAIL

<b>MAJE-124/10</b>	Polished Stainless Steel Feet & Handle	
<b>MAJE-124/11</b>	Polished Plated Stainless Steel Feet & Handle	
<b>MAJE-124/12</b>	Brass Feet & Handle	

#### OAK OR WALNUT TOP & HANDLE DETAIL

<b>MAJE-124/13</b>	Polished Stainless Steel Feet & Handle	
<b>MAJE-124/14</b>	Polished Plated Stainless Steel Feet & Handle	
<b>MAJE-124/15</b>	Brass Feet & Handle	

<b>UPCHARGE</b>	Cutlery insert	
-----------------	----------------	--



3 vol. / 1.493 m3 / 135 Kg

## SIDEBOARD

Description		Dimensions in Inches		
Item No.	Finish	W	H	D

### MAJESTIC Sideboard (Small Version)

4x Doors  
 1x Interior Drawer & 2x Lacquer Shelves  
 Metal Feet & Handle Detail  
 Lacquer Structure

70 7/8"      35 1/2"      21 5/8"

#### STONE TOP & HANDLE DETAIL

MAJE-123/1	Polished Stainless Steel Feet & Handle	
MAJE-123/2	Polished Plated Stainless Steel Feet & Handle	
MAJE-123/3	Brass Feet & Handle	

#### NATURAL EBONY OR NATURAL ROSEWOOD TOP & HANDLE DETAIL

MAJE-123/4	Polished Stainless Steel Feet & Handle	
MAJE-123/5	Polished Plated Stainless Steel Feet & Handle	
MAJE-123/6	Brass Feet & Handle	

#### OAK FUME, RECON. EBONY, RECON. ROSEWOOD OR EUCALYPTUS FRISE TOP & HANDLE DETAIL

MAJE-123/7	Polished Stainless Steel Feet & Handle	
MAJE-123/8	Polished Plated Stainless Steel Feet & Handle	
MAJE-123/9	Brass Feet & Handle	

#### PLAIN EUCALYPTUS STAIN TOP & HANDLE DETAIL

MAJE-123/10	Polished Stainless Steel Feet & Handle	
MAJE-123/11	Polished Plated Stainless Steel Feet & Handle	
MAJE-123/12	Brass Feet & Handle	

#### OAK OR WALNUT TOP & HANDLE DETAIL

MAJE-123/13	Polished Stainless Steel Feet & Handle	
MAJE-123/14	Polished Plated Stainless Steel Feet & Handle	
MAJE-123/15	Brass Feet & Handle	

UPCHARGE	Cutlery insert	
----------	----------------	--



3 vol. / 1.227 m3 / 129 Kg

## VITRINE

### MAJESTIC Vitrine

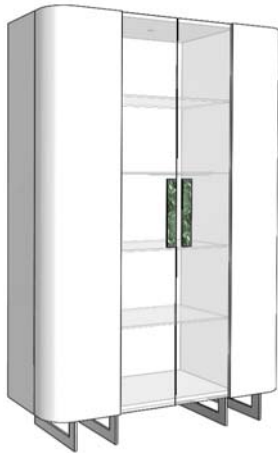
2x Doors, 4x Glass Shelves & 8x Oak Shelves  
 Metal Feet & Handle Detail  
 Lacquer Structure

47 1/4"      78 3/4"      17 3/4"

#### STONE OR ANY WOOD FINISH ON HANDLE DETAIL

MAJE-137/1	Polished Stainless Steel Feet & Handle	
MAJE-137/2	Polished Plated Stainless Steel Feet & Handle	
MAJE-137/3	Brass Feet & Handle	

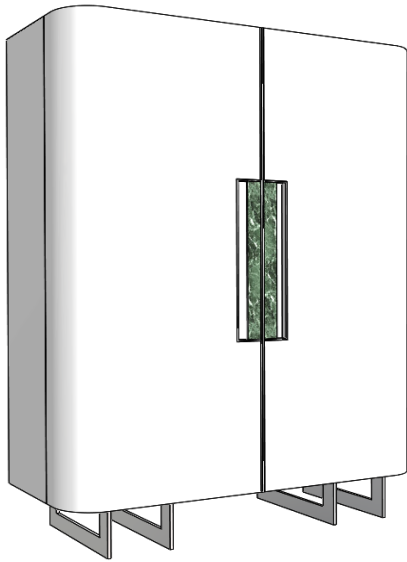
UPCHARGE	LED Lighting	
----------	--------------	--



4 vol. / 1.296 m3 / 142 Kg

\*\*\* RECOMMENDED THAT UNIT BE ATTACHED TO WALL \*\*\*

BAR	Description		Dimensions in Inches		
	Item No.	Finish	W	H	D



3 vol. / 1.048 m3 / 123 Kg

\*\*\* RECOMMENDED THAT UNIT BE ATTACHED TO WALL \*\*\*

**MAJESTIC Bar**  
 2x Doors & 1x Glass Shelf  
 Mirrored Back  
 Metal Feet & Handle Detail  
 Lacquer Structure

47 1/4"      63"      17 3/4"

STONE TOP & HANDLE DETAIL		
MAJE-132/1	Polished Stainless Steel Feet & Handle	
MAJE-132/2	Polished Plated Stainless Steel Feet & Handle	
MAJE-132/3	Brass Feet & Handle	

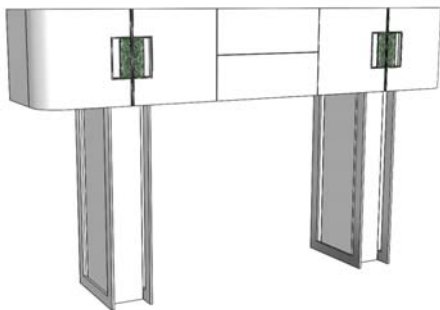
NATURAL EBONY OR NATURAL ROSEWOOD TOP & HANDLE DETAIL		
MAJE-132/4	Polished Stainless Steel Feet & Handle	
MAJE-132/5	Polished Plated Stainless Steel Feet & Handle	
MAJE-132/6	Brass Feet & Handle	

OAK FUME, RECON. EBONY, RECON. ROSEWOOD OR EUCALYPTUS FRISE TOP & HANDLE DETAIL		
MAJE-132/7	Polished Stainless Steel Feet & Handle	
MAJE-132/8	Polished Plated Stainless Steel Feet & Handle	
MAJE-132/9	Brass Feet & Handle	

PLAIN EUCALYPTUS STAIN TOP & HANDLE DETAIL		
MAJE-132/10	Polished Stainless Steel Feet & Handle	
MAJE-132/11	Polished Plated Stainless Steel Feet & Handle	
MAJE-132/12	Brass Feet & Handle	

OAK OR WALNUT TOP & HANDLE DETAIL		
MAJE-132/13	Polished Stainless Steel Feet & Handle	
MAJE-132/14	Polished Plated Stainless Steel Feet & Handle	
MAJE-132/15	Brass Feet & Handle	

<b>UPCHARGE</b>	LED Lighting	
-----------------	--------------	--



3 vol. / 1.048 m3 / 123 Kg

\*\*\* RECOMMENDED THAT UNIT BE ATTACHED TO WALL \*\*\*

**MAJESTIC High Bar**  
 4x Doors, 2x Drawers & 2x Glass Shelves  
 Metal Feet & Handle Detail  
 Lacquer Structure

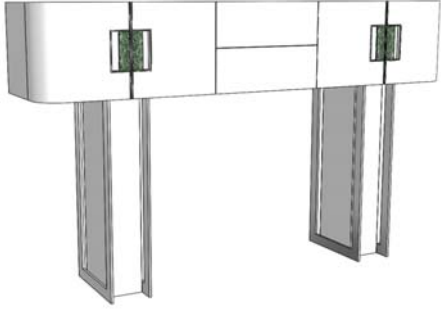
78 3/4"      51 1/4"      17 3/4"

STONE TOP & HANDLE DETAIL		
MAJE-142/1	Polished Stainless Steel Feet & Handle	
MAJE-142/2	Polished Plated Stainless Steel Feet & Handle	
MAJE-142/3	Brass Feet & Handle	

NATURAL EBONY OR NATURAL ROSEWOOD TOP & HANDLE DETAIL		
MAJE-142/4	Polished Stainless Steel Feet & Handle	
MAJE-142/5	Polished Plated Stainless Steel Feet & Handle	
MAJE-142/6	Brass Feet & Handle	

OAK FUME, RECON. EBONY, RECON. ROSEWOOD OR EUCALYPTUS FRISE TOP & HANDLE DETAIL		
MAJE-142/7	Polished Stainless Steel Feet & Handle	
MAJE-142/8	Polished Plated Stainless Steel Feet & Handle	
MAJE-142/9	Brass Feet & Handle	

BAR	Description		Dimensions in Inches		
	Item No.	Finish	W	H	D



**MAJESTIC High Bar**  
 4x Doors, 2x Drawers & 2x Glass Shelves  
 Metal Feet & Handle Detail  
 Lacquer Structure

78 3/4"      51 1/4"      17 3/4"

3 vol. / 0.686 m3 / 112 Kg

\*\*\* RECOMMENDED THAT UNIT BE ATTACHED TO WALL\*\*\*

PLAIN EUCALYPTUS STAIN TOP & HANDLE DETAIL		
MAJE-142/10	Polished Stainless Steel Feet & Handle	
MAJE-142/11	Polished Plated Stainless Steel Feet & Handle	
MAJE-142/12	Brass Feet & Handle	

OAK OR WALNUT TOP & HANDLE DETAIL		
MAJE-142/13	Polished Stainless Steel Feet & Handle	
MAJE-142/14	Polished Plated Stainless Steel Feet & Handle	
MAJE-142/15	Brass Feet & Handle	

UPCHARGE	LED Lighting	
----------	--------------	--

## MEDIA



**MAJESTIC Media Cabinet (Big Version)**  
 4x Doors, 1x Drawer & 2x Lacquer Shelves  
 Metal Feet & Handle Detail  
 Lacquer Structure

78 3/4"      21 5/8"      19 5/8"

2 vol. / 0.668 m3 / 123 Kg

STONE TOP & HANDLE DETAIL		
MAJE-162/1	Polished Stainless Steel Feet & Handle	
MAJE-162/2	Polished Plated Stainless Steel Feet & Handle	
MAJE-162/3	Brass Feet & Handle	

NATURAL EBONY OR NATURAL ROSEWOOD TOP & HANDLE DETAIL		
MAJE-162/4	Polished Stainless Steel Feet & Handle	
MAJE-162/5	Polished Plated Stainless Steel Feet & Handle	
MAJE-162/6	Brass Feet & Handle	

OAK FUME, RECON. EBONY, RECON. ROSEWOOD OR EUCALYPTUS FRISE TOP & HANDLE DETAIL		
MAJE-162/7	Polished Stainless Steel Feet & Handle	
MAJE-162/8	Polished Plated Stainless Steel Feet & Handle	
MAJE-162/9	Brass Feet & Handle	

PLAIN EUCALYPTUS STAIN TOP & HANDLE DETAIL		
MAJE-162/10	Polished Stainless Steel Feet & Handle	
MAJE-162/11	Polished Plated Stainless Steel Feet & Handle	
MAJE-162/12	Brass Feet & Handle	

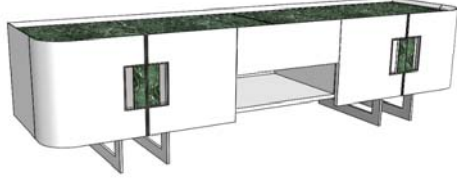
OAK OR WALNUT TOP & HANDLE DETAIL		
MAJE-162/13	Polished Stainless Steel Feet & Handle	
MAJE-162/14	Polished Plated Stainless Steel Feet & Handle	
MAJE-162/15	Brass Feet & Handle	

MEDIA	Description		Dimensions in Inches		
	Item No.	Finish	W	H	D

**MAJESTIC Media Cabinet (Small Version)**

4x Doors, 1x Drawer & 2x Lacquer Shelves  
Metal Feet & Handle Detail  
Lacquer Structure

70 7/8"      21 5/8"      19 5/8"



2 vol. / 0.603 m3 / 103 Kg

**STONE TOP & HANDLE DETAIL**

MAJE-167/1	Polished Stainless Steel Feet & Handle	
MAJE-167/2	Polished Plated Stainless Steel Feet & Handle	
MAJE-167/3	Brass Feet & Handle	

**NATURAL EBONY OR NATURAL ROSEWOOD TOP & HANDLE DETAIL**

MAJE-167/4	Polished Stainless Steel Feet & Handle	
MAJE-167/5	Polished Plated Stainless Steel Feet & Handle	
MAJE-167/6	Brass Feet & Handle	

**OAK FUME, RECON. EBONY, RECON. ROSEWOOD OR EUCALYPTUS FRISE TOP & HANDLE DETAIL**

MAJE-167/7	Polished Stainless Steel Feet & Handle	
MAJE-167/8	Polished Plated Stainless Steel Feet & Handle	
MAJE-167/9	Brass Feet & Handle	

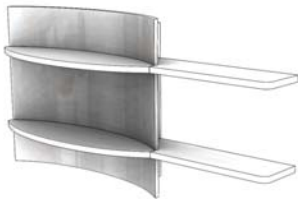
**PLAIN EUCALYPTUS STAIN TOP & HANDLE DETAIL**

MAJE-167/10	Polished Stainless Steel Feet & Handle	
MAJE-167/11	Polished Plated Stainless Steel Feet & Handle	
MAJE-167/12	Brass Feet & Handle	

**OAK OR WALNUT TOP & HANDLE DETAIL**

MAJE-167/13	Polished Stainless Steel Feet & Handle	
MAJE-167/14	Polished Plated Stainless Steel Feet & Handle	
MAJE-167/15	Brass Feet & Handle	

**WALL MODULE**



1 vol. / 0.406 m3 / 27 kg

**CURVE Shelf Module**

51 1/4"      28 3/8"      10"

CURVE-108/1	All Lacquer		2,965	2,688
-------------	-------------	--	-------	-------

**DESK**



3 vol. / 0.326 m3 / 50 kg

**MAJESTIC Desk**

2x Drawers  
Metal Feet & Handle Detail

83 1/4"      30"      27 1/2"

**NATURAL EBONY OR NATURAL ROSEWOOD TOP & HANDLE DETAIL**

MAJE-105/1	Polished Stainless Steel Feet & Handle	
MAJE-105/2	Polished Plated Stainless Steel Feet & Handle	
MAJE-105/3	Brass Feet & Handle	

**OAK FUME, RECON. EBONY, RECON. ROSEWOOD OR EUCALYPTUS FRISE TOP & HANDLE DETAIL**

MAJE-105/4	Polished Stainless Steel Feet & Handle	
MAJE-105/5	Polished Plated Stainless Steel Feet & Handle	
MAJE-105/6	Brass Feet & Handle	

DESK	Description		Dimensions in Inches		
	Item No.	Finish	W	H	D

**MAJESTIC Desk**  
2x Drawers  
Metal Feet & Handle Detail

83 1/4"      30"      27 1/2"



3 vol. / 0.326 m3 / 50 kg

**PLAIN EUCALYPTUS STAIN TOP & HANDLE DETAIL**

<b>MAJE-105/7</b>	Polished Stainless Steel Feet & Handle	
<b>MAJE-105/8</b>	Polished Plated Stainless Steel Feet & Handle	
<b>MAJE-105/9</b>	Brass Feet & Handle	

**OAK OR WALNUT TOP & HANDLE DETAIL**

<b>MAJE-105/10</b>	Polished Stainless Steel Feet & Handle	
<b>MAJE-105/11</b>	Polished Plated Stainless Steel Feet & Handle	
<b>MAJE-105/12</b>	Brass Feet & Handle	

**BOOKSHELF**

**MAJESTIC Floating Book Case (Finished on both Sides)**  
3x Drawers & 4 Shelves per section  
Wood Structure & Metal Accents

118 1/8"      87"      17 3/8"



4 vol. / 2.415 m3 / 265 Kg

\*\*\* RECOMMENDED THAT UNIT BE ATTACHED TO WALL \*\*\*

**NATURAL EBONY OR NATURAL ROSEWOOD**

<b>MAJE-172/1</b>	Polished Stainless Steel Accents	
<b>MAJE-172/2</b>	Polished Plated Stainless Steel Accents	
<b>MAJE-172/3</b>	Brass Accents	

**OAK FUME, RECON. EBONY, RECON. ROSEWOOD OR EUCALYPTUS FRISE**

<b>MAJE-172/4</b>	Polished Stainless Steel Accents	
<b>MAJE-172/5</b>	Polished Plated Stainless Steel Accents	
<b>MAJE-172/6</b>	Brass Accents	

**PLAIN EUCALYPTUS STAIN**

<b>MAJE-172/7</b>	Polished Stainless Steel Accents	
<b>MAJE-172/8</b>	Polished Plated Stainless Steel Accents	
<b>MAJE-172/9</b>	Brass Accents	

**OAK OR WALNUT**

<b>MAJE-172/10</b>	Polished Stainless Steel Accents	
<b>MAJE-172/11</b>	Polished Plated Stainless Steel Accents	
<b>MAJE-172/12</b>	Brass Accents	

**MAJESTIC Book Case**  
3x Drawers & 4 Shelves per section  
Wood Structure & Metal Accents

118 1/8"      87"      17 3/8"



4 vol. / 2.415 m3 / 265 Kg

\*\*\* RECOMMENDED THAT UNIT BE ATTACHED TO WALL \*\*\*

**NATURAL EBONY OR NATURAL ROSEWOOD**

<b>MAJE-176/1</b>	Polished Stainless Steel Accents	
<b>MAJE-176/2</b>	Polished Plated Stainless Steel Accents	
<b>MAJE-176/3</b>	Brass Accents	

**OAK FUME, RECON. EBONY, RECON. ROSEWOOD OR EUCALYPTUS FRISE**

<b>MAJE-176/4</b>	Polished Stainless Steel Accents	
<b>MAJE-176/5</b>	Polished Plated Stainless Steel Accents	
<b>MAJE-176/6</b>	Brass Accents	

**PLAIN EUCALYPTUS STAIN**

<b>MAJE-176/7</b>	Polished Stainless Steel Accents	
<b>MAJE-176/8</b>	Polished Plated Stainless Steel Accents	
<b>MAJE-176/9</b>	Brass Accents	

**OAK OR WALNUT**

<b>MAJE-176/10</b>	Polished Stainless Steel Accents	
<b>MAJE-176/11</b>	Polished Plated Stainless Steel Accents	
<b>MAJE-176/12</b>	Brass Accents	

# BOOKSHELF

Description		Dimensions in Inches		
Item No.	Finish	W	H	D

## MAJESTIC Floating Modular Book Case (Finished on both sides)

1x Drawers & 4 Shelves  
Wood Structure  
Metal Accents

39 3/8"      87"      17 3/8"



3 vol. / 0.805 m3 / 198 Kg

\*\*\* RECOMMENDED THAT UNIT BE ATTACHED TO WALL \*\*\*

NATURAL EBONY OR NATURAL ROSEWOOD	
MAJE-180/1	Polished Stainless Steel Accents
MAJE-180/2	Polished Plated Stainless Steel Accents
MAJE-180/3	Brass Accents

OAK FUME, RECON. EBONY, RECON. ROSEWOOD OR EUCALYPTUS FRISE	
MAJE-180/4	Polished Stainless Steel Accents
MAJE-180/5	Polished Plated Stainless Steel Accents
MAJE-180/6	Brass Accents

PLAIN EUCALYPTUS STAIN	
MAJE-180/7	Polished Stainless Steel Accents
MAJE-180/8	Polished Plated Stainless Steel Accents
MAJE-180/9	Brass Accents

OAK OR WALNUT	
MAJE-180/10	Polished Stainless Steel Accents
MAJE-180/11	Polished Plated Stainless Steel Accents
MAJE-180/12	Brass Accents

## MAJESTIC Modular Book Case

1x Drawers & 4 Shelves  
Wood Structure  
Metal Accents

39 3/8"      87"      17 3/8"



3 vol. / 0.805 m3 / 198 Kg

\*\*\* RECOMMENDED THAT UNIT BE ATTACHED TO WALL \*\*\*

NATURAL EBONY	
MAJE-184/1	Polished Stainless Steel Accents
MAJE-184/2	Polished Plated Stainless Steel Accents
MAJE-184/3	Brass Accents

OAK FUME, RECON. EBONY OR EUCALYPTUS FRISE	
MAJE-184/4	Polished Stainless Steel Accents
MAJE-184/5	Polished Plated Stainless Steel Accents
MAJE-184/6	Brass Accents

PLAIN EUCALYPTUS STAIN	
MAJE-184/7	Polished Stainless Steel Accents
MAJE-184/8	Polished Plated Stainless Steel Accents
MAJE-184/9	Brass Accents

OAK OR WALNUT	
MAJE-184/10	Polished Stainless Steel Accents
MAJE-184/11	Polished Plated Stainless Steel Accents
MAJE-184/12	Brass Accents

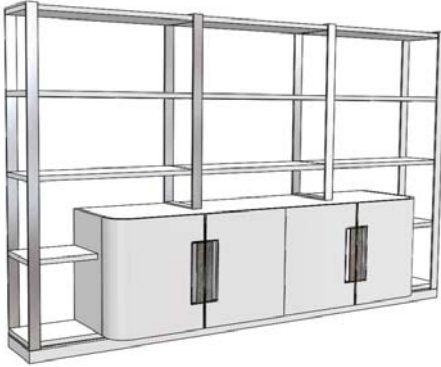


# BOOKSHELF

Description		Dimensions in Inches		
Item No.	Finish	W	H	D

**MAJESTIC B Bookshelf**  
 Lacquer Shelves & Sideboard  
 Metal Bookshelf Structure  
 Accent Handle Detail w/ Metal

117 3/8"    78 3/4"    21 5/8"



5 vol. / 1.600 m3 / 245 Kg

### STONE HANDLE DETAIL

<b>MAJE-169/1</b>	Polished Stainless Steel Structure & Handle
<b>MAJE-169/2</b>	Polished Plated Stainless Steel Structure & Handle
<b>MAJE-169/3</b>	Brass Structure & Handle

### NATURAL EBONY OR NATURAL ROSEWOOD HANDLE DETAIL

<b>MAJE-169/4</b>	Polished Stainless Steel Structure & Handle
<b>MAJE-169/5</b>	Polished Plated Stainless Steel Structure & Handle
<b>MAJE-169/6</b>	Brass Structure & Handle

### OAK FUME, RECON. EBONY, RECON. ROSEWOOD OR EUCALYPTUS FRISE HANDLE DETAIL

<b>MAJE-169/7</b>	Polished Stainless Steel Structure & Handle
<b>MAJE-169/8</b>	Polished Plated Stainless Steel Structure & Handle
<b>MAJE-169/9</b>	Brass Structure & Handle

### PLAIN EUCALYPTUS STAIN HANDLE DETAIL

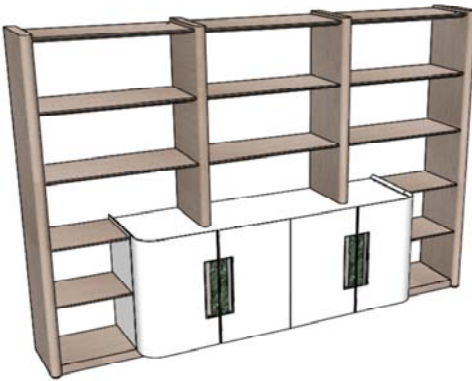
<b>MAJE-169/10</b>	Polished Stainless Steel Structure & Handle
<b>MAJE-169/11</b>	Polished Plated Stainless Steel Structure & Handle
<b>MAJE-169/12</b>	Brass Structure & Handle

### OAK OR WALNUT HANDLE DETAIL

<b>MAJE-169/13</b>	Polished Stainless Steel Structure & Handle
<b>MAJE-169/14</b>	Polished Plated Stainless Steel Structure & Handle
<b>MAJE-169/15</b>	Brass Structure & Handle

**MAJESTIC C Bookshelf**  
 Wood Bookshelves & Lacquer Sideboard  
 Accent Handle Detail w/ Metal

108 5/8"    79 1/8"    21 5/8"



5 vol. / 1.370 m3 / 230 Kg

### STONE HANDLE DETAIL W/ OAK SHELF STRUCTURE

<b>MAJE-170/1</b>	Polished Stainless Steel
<b>MAJE-170/2</b>	Polished Plated Stainless Steel
<b>MAJE-170/3</b>	Brass

### NATURAL EBONY OR NATURAL ROSEWOOD

<b>MAJE-170/4</b>	Polished Stainless Steel
<b>MAJE-170/5</b>	Polished Plated Stainless Steel
<b>MAJE-170/6</b>	Brass

### OAK FUME, RECON. EBONY, RECON. ROSEWOOD OR EUCALYPTUS FRISE

<b>MAJE-170/7</b>	Polished Stainless Steel
<b>MAJE-170/8</b>	Polished Plated Stainless Steel
<b>MAJE-170/9</b>	Brass

### PLAIN EUCALYPTUS STAIN

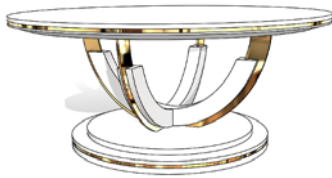
<b>MAJE-170/10</b>	Polished Stainless Steel
<b>MAJE-170/11</b>	Polished Plated Stainless Steel
<b>MAJE-170/12</b>	Brass

### OAK OR WALNUT

<b>MAJE-170/13</b>	Polished Stainless Steel
<b>MAJE-170/14</b>	Polished Plated Stainless Steel
<b>MAJE-170/15</b>	Brass

**OCCASIONAL**

Description		Dimensions in Inches		
Item No.	Finish	W	H	D



1 vol. / 0.540 m3 / 50 kg

**MAJESTIC Coffee Table**  
Lacquer Top & Base  
Metal Apron/Plinth/Base Details

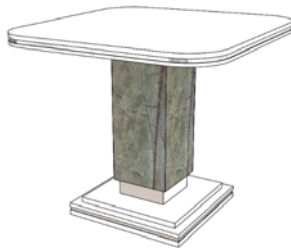
39 3/8"      18 1/8"      39 3/8"

<b>MAJE-188/1</b>	Polished Stainless Steel Detail
<b>MAJE-188/2</b>	Polished Plated Stainless Steel Colors
<b>MAJE-188/3</b>	Brushed Brass

<b>UPCHARGE</b>	For Built-In Top w/ Stone
-----------------	---------------------------

**MAJESTIC End Table**  
Lacquer Top & Base  
Metal Apron/Column/Lower Base Details

23 5/8"      22 1/2"      23 5/8"



1 vol. / 0.250 m3 / 30 Kg

STONE COLUMN	
<b>MAJE-189/1</b>	Polished Stainless Steel Detail
<b>MAJE-189/2</b>	Polished Plated Stainless Steel Colors
<b>MAJE-189/3</b>	Brushed Brass

NATURAL EBONY OR NATURAL ROSEWOOD TOP COLUMN	
<b>MAJE-189/4</b>	Polished Stainless Steel Detail
<b>MAJE-189/5</b>	Polished Plated Stainless Steel Colors
<b>MAJE-189/6</b>	Brushed Brass

OAK FUME, RECON. EBONY, RECON. ROSEWOOD OR EUCALYPTUS FRISE COLUMN	
<b>MAJE-189/7</b>	Polished Stainless Steel Detail
<b>MAJE-189/8</b>	Polished Plated Stainless Steel Colors
<b>MAJE-189/9</b>	Brushed Brass

PLAIN EUCALYPTUS STAIN COLUMN	
<b>MAJE-189/10</b>	Polished Stainless Steel Detail
<b>MAJE-189/11</b>	Polished Plated Stainless Steel Colors
<b>MAJE-189/12</b>	Brushed Brass

OAK OR WALNUT COLUMN	
<b>MAJE-189/13</b>	Polished Stainless Steel Detail
<b>MAJE-189/14</b>	Polished Plated Stainless Steel Colors
<b>MAJE-189/15</b>	Brushed Brass