

# MEDIA SYSTEM COLLECTION

BY ALEAL



**PLANUM**<sup>®</sup>  
FURNITURE

Swedesford Corporate Center  
619 B Swedesford Road  
Frazer, PA 19355

Email: [info@planumfurniture.com](mailto:info@planumfurniture.com)  
Website: [planumfurniture.com](http://planumfurniture.com)

Tel : 610/251-2120  
Tel : 800/343-0042  
Fax : 610/251-2290

# ALEAL Finishes

## LACQUER FINISHES



LM01/LB01 BLACK



LM02/LB02 WHITE



LM07/LB07 BRICK



LM11/LB11



LM12/LB12 SLATE



LM13/LB13 IVORY



LM14/LB14 METALLIC  
GRAY



LM15/LB15 GRAY  
BEIGE



LM16/LB16 FOG GRAY



LM18/LB18 METALLIC  
TAUPE



LM19/LB19



LM20/LB20 GUN  
METAL GRAY



LM21/LB21 MUSTARD  
YELLOW



LM22/LB22 ASH GRAY



LM23/LB23 SILVER  
GRAY



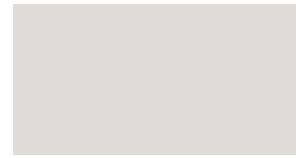
LM26/LB26  
BURGANDY



LM27/LB27 RUBY



LM28/LB28  
CAPPUCCINO



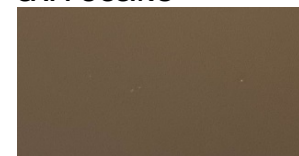
LM29 / LB29



LM34 / LB34



LM36 PEARL



LM37 PEWTER



LM38 PALOMINO



LM39/LB39 PETROL  
BLUE



LM44/LB44 BRONZE



LM42/LB42 SILVER



LM43/LB43 GOLD



LM45/LB45 CHAMPAGNE

**PLEASE NOTE ABOVE LACQUERS ARE AVAILABLE IN THE BELOW SHEENS:**

5% MATTE OR 30% SEMIGLOSS - USE MATTE PRICING (LM = MATTE)

100% SHEEN - USE HIGH GLOSS PRICING (LB = HIGH GLOSS)

# ALEAL Finishes

## OAK & WALNUT FINISHES



BLACK OAK CV01



CHOCOLATE OAK  
CV02



SLATE GRAY OAK  
CV03



WHITE OAK CV04



CHERRY OAK CV05



NATURAL OAK CV06



WILD OAK CV06



GRAY BEIGE OAK  
CV09



METALLIC GRAY  
OAK CV10



METALLIC TAUPE  
OAK CV11



IVORY OAK CV12



STEEL GRAY OAK  
CVL14



OPAL GRAY OAK  
CVL15



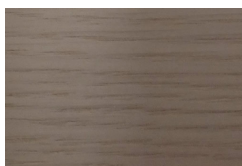
SMOOTH CHOCOLATE  
OAK CVL16



RUSTIC OAK CVL17



CVL19



CV26



CV25



WALNUT NG01

**PLEASE NOTE ABOVE WOODS ARE AVAILABLE IN THE BELOW SHEENS:**

5% MATTE OR 30% SEMIGLOSS - USE MATTE PRICING

\*HIGH GLOSS 100% SHEEN IS AVAILABLE AT 6% UPCHARGE\*

# ALEAL Finishes

## EBONY

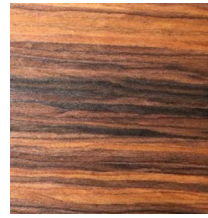


RECONSTITUTED  
EBONY (ERM1 / ERB1)

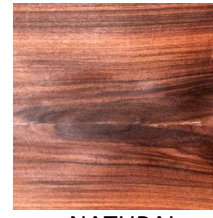


NATURAL EBONY  
(EBM1 / EBB1)

## ROSEWOOD



RECONSTITUTED  
ROSEWOOD (PRM1 /  
PRB1)

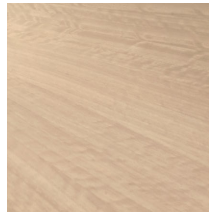


NATURAL  
ROSEWOOD (PNM1 /  
PNB1)

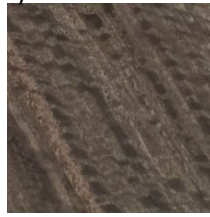
## EUCALYPTUS FRISE



GREY EUCALYPTUS  
(EPM1 / EPB1)

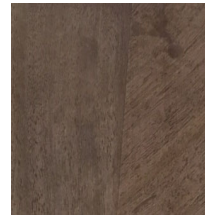


POLAR EUCALYPTUS  
(EPM6 / EPB6)



ESPRESSO EUCALYPTUS  
(EPM7 - EPB7)

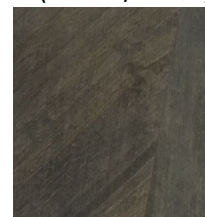
## PLAIN STAINED EUCALYPTUS



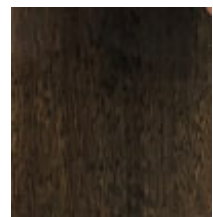
SOFT PLUM  
(ENM2 / ENB2)



ARGENTO  
(ENM9 / ENB9)



SOFT GREY  
(ENM3 / ENB3)



TOFFEE  
(ENM8 / ENB8)

## OAK FUME



(CPM1 / CPB1)

**PLEASE NOTE ABOVE WOODS ARE AVAILABLE IN THE BELOW SHEENS:**

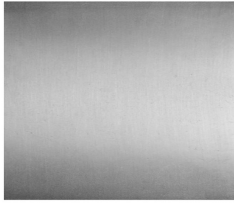
5% MATTE OR 30% SEMIGLOSS - USE MATTE PRICING (M# = MATTE)

100% SHEEN - USE HIGH GLOSS PRICING (B# = HIGH GLOSS)



# ALEAL Finishes

## STAINLESS STEEL

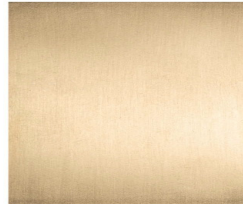


POLISHED STAINLESS  
STEEL (IN01)

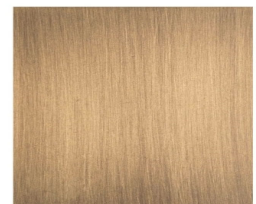


BRUSHED STAINLESS  
STEEL (IN02)

## BRASS



BRUSHED BRASS  
(LT01)

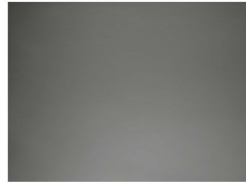


BRUSHED ANTIQUE BRASS  
(LT03)

## POLISHED PLATED STAINLESS STEEL



COPPER  
(IP01)



NICKEL NOIR  
(IP02)

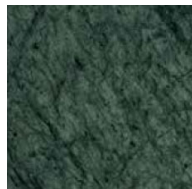


GOLD  
(IP03)

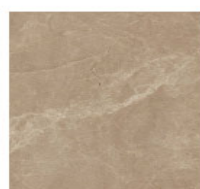
## MARBLES



MR04



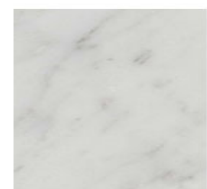
MR05



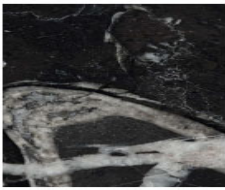
MR06



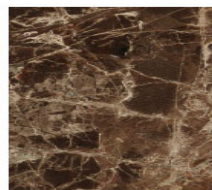
MR07



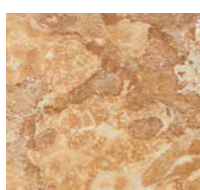
MR08



MR09



MR10



MR12

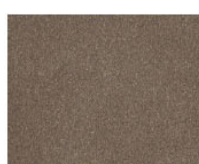
## CERAMIC FINISHES



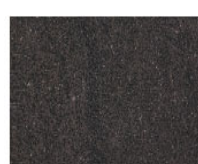
ARENA CR01



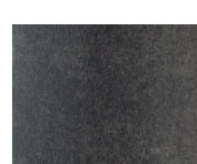
ARTIC WHITE CR02



BARRO CR04



BASALT BLACK CR06



BELGIAN BLUE



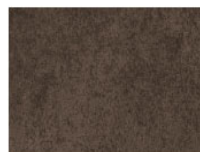
PERLA CR14



BASALT GREY CR07



CEMENT CR08



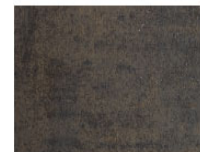
IRON COPPER CR09



IRON CORTEN CR10



IRON GREY CR11



IRON MOSS CR12

# ALEAL Finishes

## SPECIAL CERAMIC FINISHES (UPCHARGE)



Estatuario



Silk Gris

### ESTATUARIO

Measure: 2600 x 1200mm  
Thickness / Finish: 5.6mm gloss / 3.5mm matte

### CARRARA

Measure: 2600 x 1200mm  
Thickness / Finish: 5.6mm gloss or matte / 3.5mm matte



Carrara



Silk Beige

### CALACATA

Measure: 2600 x 1200mm  
Thickness / Finish: 5.6mm gloss / 3.5mm matte

### SILK GRIS

Measure: 2600 x 1200mm  
Thickness / Finish: 5.6mm gloss or matte



Calacata



Thunder Nigth

### SILK BEIGE

Measure: 2600 x 1200mm  
Thickness / Finish: 5.6mm gloss or matte

### THUNDER NIGTH

Measure: 3000 x 1000mm  
Thickness / Finish: 3.5mm matte

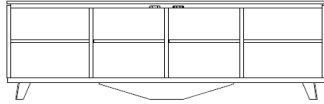
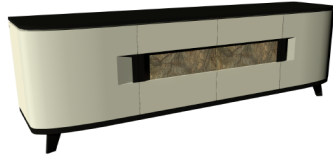
### **PLEASE NOTE :**

- To place ceramics on Extension dining tables please check first with us.
- Measures bigger than mentioned above please check with us.
- Isn't possible to buy these ceramics cut. We need to buy the entire piece even for a coffee table. 'Waste' can be sent back with order
- Reach out to office for pricing

**\*\*PLEASE NOTE: FINISHES ARE SPECIFIED IN THE ITEM DESCRIPTIONS, ALL FINISHES ARE NOT AVAILABLE ON ALL ITEMS. PLEASE READ THE FINISH DESCRIPTION FOR EACH ITEM TO KNOW WHAT FINISHES ARE APPLICABLE\*\*\***



MEDIA SYSTEM	Description		Dimensions in Inches		
	Item No.	Finish	W	H	D



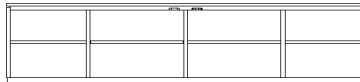
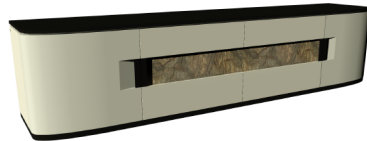
1 vol. / 0.825 m3 / 85 Kg

**AURO Small TV Unit (1BAS4PT190AU)**  
 4x Doors & 4x Interior Lacquer Shelves  
 Lacquer Top, Case & Feet w/ Accent Front  
 Lacquer Painted Iron Handles

74 7/8"      25 5/8"      17 3/4"

FINISH OPTIONS		
<b>AURO-301/1</b>	All Lacquer	
<b>AURO-301/2</b>	Lacquer w/ Oak or Walnut (5% or 30% Sheen) Accent	
<b>AURO-301/3</b>	Lacquer w/ Stone Accent	

<b>UPCHARGE</b>	LED on Central Doors (2LEDBTV220AU)	
<b>UPCHARGE</b>	Cable Management (2PAS084011)	
<b>UPCHARGE</b>	SAT Repeater (2KITSATRPT)	



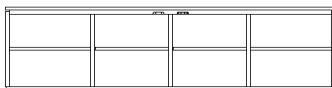
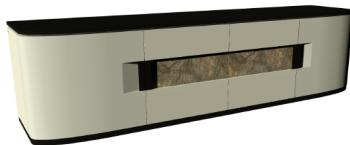
1 vol. / 0.796 m3 / 105 Kg

**AURO Large Wall Hung Unit (1BAS4PT220AUS)**  
 4x Doors & 4x Interior Lacquer Shelves  
 Lacquer Top, Case & Plinth w/ Accent Front  
 Lacquer Painted Iron Handles

86 5/8"      21 1/4"      17 3/4"

FINISH OPTIONS		
<b>AURO-325/1</b>	All Lacquer	
<b>AURO-325/2</b>	Lacquer w/ Oak or Walnut (5% or 30% Sheen) Accent	
<b>AURO-325/3</b>	Lacquer w/ Stone Accent	

<b>UPCHARGE</b>	LED on Central Doors (2LEDBTV220AU)	
<b>UPCHARGE</b>	Cable Management (2PAS084011)	
<b>UPCHARGE</b>	SAT Repeater (2KITSATRPT)	



1 vol. / 0.693 m3 / 80 Kg

**AURO Small Wall Hung Unit (1BAS4PT190AUS)**  
 4x Doors & 4x Interior Lacquer Shelves  
 Lacquer Top, Case & Plinth w/ Accent Front  
 Lacquer Painted Iron Handles

74 7/8"      21 1/4"      17 3/4"

FINISH OPTIONS		
<b>AURO-326/1</b>	All Lacquer	
<b>AURO-326/2</b>	Lacquer w/ Oak or Walnut (5% or 30% Sheen) Accent	
<b>AURO-326/3</b>	Lacquer w/ Stone Accent	

<b>UPCHARGE</b>	LED on Central Doors (2LEDBTV190AU)	
<b>UPCHARGE</b>	Cable Management (2PAS084011)	
<b>UPCHARGE</b>	SAT Repeater (2KITSATRPT)	



**AURO Wall Shelf (1PNLPRT147AU)**  
 Lacquered Back with Glass Shelf

58"      12 1/4"      7 7/8"

FINISH OPTIONS		
<b>AURO-330/1</b>	All Lacquer	
<b>AURO-330/2</b>	Lacquer w/ Oak or Walnut (5% or 30% Sheen) Accent	
<b>AURO-330/3</b>	Lacquer w/ Stone Accent	

PLEASE NOTE: It is the responsibility of the customer to ensure that the correct hardware is used when hanging wall modules; manufacturer cannot supply hardware for every type of situation.



MEDIA SYSTEM	Description		Dimensions in Inches		
	Item No.	Finish	W	H	D

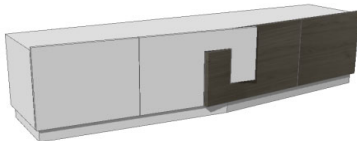


**AURO Wall Shelf (1PNLPRT110AU)**

Lacquered Back with Glass Shelf

43 3/8"      12 1/4"      7 7/8"

FINISH OPTIONS		
<b>AURO-330/1</b>	All Lacquer	
<b>AURO-330/2</b>	Lacquer w/ Oak or Walnut (5% or 30% Sheen) Accent	
<b>AURO-330/3</b>	Lacquer w/ Stone Accent	



**BOGO Media Cabinet (1BASPRT200BG)**

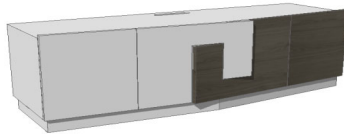
4x Doors (2x Accent Doors), 1x Interior Drawer  
Lacquer Structure & Plinth

78 3/4"      22"      21"

FINISH OPTIONS		
<b>BOGO-2002/1</b>	Oak or Walnut (5% or 30% Sheen)	
<b>BOGO-2002/3</b>	Natural Ebony	
<b>BOGO-2002/4</b>	Reconstituted Ebony, Oak Fume, Reconstituted Rosewood, Eucalyptus Frise, Natural Rosewood, Eucalyptus Stain, or All Lacquer	

**PLINTH HEIGHT: 2 3/4"**

1 vol. / 0.655 m3 / 85 Kg



**BOGO Media Cabinet (1BASPRT160BG)**

4x Doors (2x Accent Doors), 1x Interior Drawer  
Lacquer Structure & Plinth

63"      22"      21"

FINISH OPTIONS		
<b>BOGO-2015/1</b>	Oak or Walnut (5% or 30% Sheen)	
<b>BOGO-2015/3</b>	Natural Ebony	
<b>BOGO-2015/4</b>	Reconstituted Ebony, Oak Fume, Reconstituted Rosewood, Eucalyptus Frise, Natural Rosewood, Eucalyptus Stain, or All Lacquer	

**PLINTH HEIGHT: 2 3/4"**

1 vol. / 0.527 m3 / 80 Kg



**BOGO Wall Shelf (1PRT123ESTBG)**

48 1/2"      2 3/8"      9 7/8"

FINISH OPTIONS		
<b>BOGO-2016/1</b>	Oak or Walnut (5% or 30% Sheen)	
<b>BOGO-2016/3</b>	Natural Ebony	
<b>BOGO-2016/4</b>	Reconstituted Ebony, Oak Fume, Reconstituted Rosewood, Eucalyptus Frise, Natural Rosewood, Eucalyptus Stain, or All Lacquer	

1 vol. / 0,038 m3 / 10 Kg

PLEASE NOTE: It is the responsibility of the customer to ensure that the correct hardware is used when hanging wall modules; manufacturer cannot supply hardware for every type of situation.

MEDIA SYSTEM	Description		Dimensions in Inches		
	Item No.	Finish	W	H	D

**CADEO Media Cabinet (1BASTV0220CA)**

4x Center Doors & 2x Touch Latch Curved Doors  
 2x Interior Adjustable Shelves & Cable Management on Top & 1x Left Back Side  
 Wood Drawer Fronts w/ Lacquer Structure, Iron Feet & Lacquer Accents

86 5/8"      26"      19 5/8"



**DRAWER FRONTS**

<b>CADE-102/1</b>	Oak Accent Fronts	
<b>CADE-102/2</b>	Eucalyptus Stain or Walnut Accent Fronts	
<b>CADE-102/3</b>	Eucalyptus Frise, Oak Fume or Recon. Ebony Accent Fronts	
<b>CADE-102/4</b>	Natural Ebony Accent Fronts	

**TOP OPTIONS**

<b>UPCHARGE</b>	Reverse Painted Glass Top - Satin Finish	
<b>UPCHARGE</b>	Marble Top	

**METAL FEET OPTIONS**

<b>UPCHARGE</b>	Stainless Steel	
<b>UPCHARGE</b>	Polished Plated Stainless Steel - Copper, Gold, Nicke Noir	
<b>UPCHARGE</b>	Brass	

<b>UPCHARGE</b>	LED Lighting on Top	
-----------------	---------------------	--

**FABIO Media Cabinet (1BAS2GV240FB)**

2x Doors w/ Interior Lacquer Shelves  
 2x Touch Latch Drawers  
 Painted Metal Handles, Feet & Accents  
 Lacquer Top & Sides w/ Optional Drawers Finishes

94 1/2"      25 5/8"      17 3/4"



**FINISH OPTIONS**

<b>FABI-106/1</b>	Oak or Walnut (5% or 30% Sheen)	
<b>FABI-106/2</b>	Natural Ebony	
<b>FABI-106/3</b>	Recon. Ebony, Oak Fume, Recon. or Natural Rosewood, Eucalyptus Frise or Eucalyptus Stain	
<b>FABI-106/4</b>	All Lacquer	

3 vol. / 0.960 m3 / 126 Kg

**OPTIONAL FINISH COMBO : LACQUER TOP, BASE, FEET & HANDLES**

<b>FABI-106/5</b>	Oak or Walnut (5% or 30% Sheen) Structure, Doors & Drawers	
<b>FABI-106/6</b>	Oak or Walnut (5% or 30% Sheen) Structure & Doors w/ Lacquer Drawers	

<b>UPCHARGE</b>	Reverse Painted Glass Top	
<b>UPCHARGE</b>	Clear Glass Top	

PLEASE NOTE: It is the responsibility of the customer to ensure that the correct hardware is used when hanging wall modules; manufacturer cannot supply hardware for every type of situation.

MEDIA SYSTEM	Description		Dimensions in Inches		
	Item No.	Finish	W	H	D

**FABIO Media Cabinet (1BAS2GV220FB)**  
 2x Doors w/ Interior Lacquer Shelves  
 2x Touch Latch Drawers  
 Painted Metal Handles, Feet & Accents  
 Lacquer Top & Sides w/ Optional Drawers Finishes



3 vol. / 0.992 m3 / 116 Kg

86 5/8"      25 5/8"      17 3/4"

FINISH OPTIONS		
FABI-107/1	Oak or Walnut (5% or 30% Sheen)	
FABI-107/2	Natural Ebony	
FABI-107/3	Recon. Ebony, Oak Fume, Recon. or Natural Rosewood, Eucalyptus Frise or Eucalyptus Stain	
FABI-107/4	All Lacquer	

OPTIONAL FINISH COMBO : LACQUER TOP, BASE, FEET & HANDLES		
FABI-107/5	Oak or Walnut (5% or 30% Sheen) Structure, Doors & Drawers	
FABI-107/6	Oak or Walnut (5% or 30% Sheen) Structure & Doors w/ Lacquer Drawers	

UPCHARGE	Reverse Painted Glass Top	
UPCHARGE	Clear Glass Top	

**FABIO Media Cabinet (1BAS2GV200FB)**  
 2x Doors w/ Interior Lacquer Shelves  
 2x Touch Latch Drawers  
 Painted Metal Handles, Feet & Accents  
 Lacquer Top & Sides w/ Optional Drawers Finishes



3 vol. / 0.831 m3 / 112 Kg

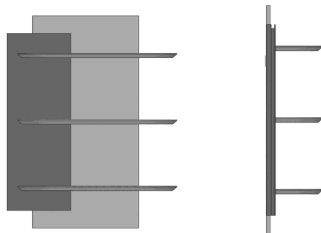
78 3/4"      25 5/8"      17 3/4"

FINISH OPTIONS		
FABI-108/1	Oak or Walnut (5% or 30% Sheen)	
FABI-108/2	Natural Ebony	
FABI-108/3	Recon. Ebony, Oak Fume, Recon. or Natural Rosewood, Eucalyptus Frise or Eucalyptus Stain	
FABI-108/4	All Lacquer	

OPTIONAL FINISH COMBO : LACQUER TOP, BASE, FEET & HANDLES		
FABI-108/5	Oak or Walnut (5% or 30% Sheen) Structure, Doors & Drawers	
FABI-108/6	Oak or Walnut (5% or 30% Sheen) Structure & Doors w/ Lacquer Drawers	

UPCHARGE	Reverse Painted Glass Top	
UPCHARGE	Clear Glass Top	

**FABIO Wall Shelf Module (R-1PNLEST128FB & L-1PNLEST830FB)**  
 Large Back Panel & Shelves in Lacquer  
 Small Back Panel in Optional Wood Finish  
 (Right Version Displayed - Available Mirror Imaged)



1 vol. / 0.364 m3 / 28 Kg

31 1/2"      47 1/4"      10 5/8"

FINISH OPTIONS		
FABI-109/1	Oak or Walnut (5% or 30% Sheen)	
FABI-109/2	Natural Ebony	
FABI-109/3	Recon. Ebony, Oak Fume, Recon. or Natural Rosewood, Eucalyptus Frise or Eucalyptus Stain	
FABI-109/4	All Lacquer	

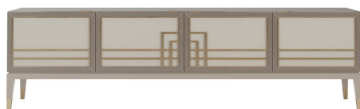
UPCHARGE	LED	
----------	-----	--

PLEASE NOTE: It is the responsibility of the customer to ensure that the correct hardware is used when hanging wall modules; manufacturer cannot supply hardware for every type of situation.

MEDIA SYSTEM	Description		Dimensions in Inches		
	Item No.	Finish	W	H	D



1 vol. / 0.094 m3 / 15 Kg



LACQUERED DOORS = SAME PRICE AS UPHOLSTERED FRONTS IN GRADE A/B

**FABIO Wall Shelf Module**  
 Back Panel in Lacquer  
 Center Back & Shelf in Optional Wood Finish  
 49 1/4"      9 1/4"      10"

FINISH OPTIONS		
FABI-110/1	Oak or Walnut (5% or 30% Sheen)	
FABI-110/2	Natural Ebony	
FABI-110/3	Recon. Ebony, Oak Fume, Recon. or Natural Rosewood, Eucalyptus Frise or Eucalyptus Stain	
FABI-110/4	All Lacquer	

UPCHARGE	LED
----------	-----

**HANNAH TV Unit (1BST220HANYB8)**  
 4x Doors & 3x Interior Lacquer Shelves  
 Lacquer Legs & Polished Stainless Steel Accents & Handles  
 Upholstered Door Fronts & Matte Lacquer Interior  
 86 5/8"      23 5/8"      17 3/4"

FINISH OPTIONS W/ GRADE A/B FABRIC:		
HANN-203/1	Eucalyptus Stain	
HANN-203/2	Oak (5% or 30% Sheen)	
HANN-203/3	Walnut (5% or 30% Sheen)	
HANN-203/4	Lacquered	
HANN-203/5	Oak Fumé, Reconstituted Ebony, Reconstituted Rosewood	
HANN-203/6	Eucalyptus Frisé, Natural Rosewood	
HANN-203/7	Natural Ebony	

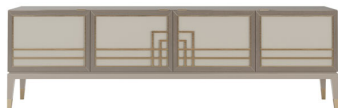
UPCHARGES FOR OTHER FABRIC/LEATHER GRADES		
UPCHARGE	Grade C/D	
UPCHARGE	Grade E	
UPCHARGE	Grade SUP	

METAL OPTIONS		
UPCHARGE	Polished Plated Stainless Steel- Gold, Copper, Nickel Noir	
UPCHARGE	Brass	

INTERIOR COMPONENTS		
UPCHARGE	Cable Management	
UPCHARGE	Center Interior Drawer	

PLEASE NOTE: It is the responsibility of the customer to ensure that the correct hardware is used when hanging wall modules; manufacturer cannot supply hardware for every type of situation.

# MEDIA SYSTEM



LACQUERED DOORS = SAME PRICE AS UPHOLSTERED FRONTS IN GRADE A/B

Description		Dimesions in Inches		
Item No.	Finish	W	H	D

## HANNAH TV Unit (1BST180HANYB8)

4x Doors & 3x Interior Lacquer Shelves  
 Lacquer Legs & Polished Stainless Steel Accents & Handles  
 Upholstered Door Fronts & Matte Lacquer Interior

70 7/8"      23 5/8"      17 3/4"

### FINISH OPTIONS W/ GRADE A/B FABRIC:

HANN-204/1	Eucalyptus Stain	
HANN-204/2	Oak (5% or 30% Sheen)	
HANN-204/3	Walnut (5% or 30% Sheen)	
HANN-204/4	Lacquered	
HANN-204/5	Oak Fumé, Reconstituted Ebony, Reconstituted Rosewood	
HANN-204/6	Eucalyptus Frisé, Natural Rosewood	
HANN-204/7	Natural Ebony	

### UPCHARGES FOR OTHER FABRIC/LEATHER GRADES

UPCHARGE	Grade C/D	
UPCHARGE	Grade E	
UPCHARGE	Grade SUP	

### METAL OPTIONS

UPCHARGE	Polished Plated Stainless Steel- Gold, Copper, Nickel Noir	
UPCHARGE	Brass	

### INTERIOR COMPONENTS

UPCHARGE	Cable Management	
UPCHARGE	Center Interior Drawer	

## MADISON Media Cabinet (1BAS4PT220MS)

4x Doors & 3x Glass Shelves  
 Lacquer Top & Metal Accents

86 5/8"      23 5/8"      19 5/8"

### EUCALYPTUS PLAIN STAIN OR LACQUER

MADI-3003/1	Stainless Steel	
MADI-3003/2	Polished Plated Stainless Steel- Gold, Copper, Nickel Noir	
MADI-3003/3	Brass	

### EUCALYPTUS FRISE OR NATURAL ROSEWOOD

MADI-3003/4	Stainless Steel	
MADI-3003/5	Polished Plated Stainless Steel- Gold, Copper, Nickel Noir	
MADI-3003/6	Brass	

### OAK OR WALNUT (5% or 30% SHEEN)

MADI-3003/7	Stainless Steel	
MADI-3003/8	Polished Plated Stainless Steel- Gold, Copper, Nickel Noir	
MADI-3003/9	Brass	

### RECONSTITUTED EBONY, OAK FUME, OR RECONSTITUTED ROSEWOOD

MADI-3003/10	Stainless Steel	
MADI-3003/11	Polished Plated Stainless Steel- Gold, Copper, Nickel Noir	
MADI-3003/12	Brass	

### NATURAL EBONY

MADI-3003/13	Stainless Steel	
MADI-3003/14	Polished Plated Stainless Steel- Gold, Copper, Nickel Noir	
MADI-3003/15	Brass	

UPCHARGE	IR Remote	
UPCHARGE	Marble Top	
UPCHARGE	Reverse Painted Glass Top	



3 vol. / 0.826 m3 / 122 Kg

PLEASE NOTE: It is the responsibility of the customer to ensure that the correct hardware is used when hanging wall modules; manufacturer cannot supply hardware for every type of situation.



MEDIA SYSTEM	Description		Dimesions in Inches		
	Item No.	Finish	W	H	D

**MADISON Media Cabinet (1BAS4PT180MS)**

4x Doors  
3x Glass Shelves  
Lacquer Top & Metal Accents

70 7/8"      23 5/8"      19 5/8"



3 vol. / 0.688 m3 / 117 Kg

**EUCALYPTUS PLAIN STAIN OR LACQUER**

MADI-3004/1	Stainless Steel	
MADI-3004/2	Polished Plated Stainless Steel- Gold, Copper, Nickel Noir	
MADI-3004/3	Brass	

**EUCALYPTUS FRISE OR NATURAL ROSEWOOD**

MADI-3004/4	Stainless Steel	
MADI-3004/5	Polished Plated Stainless Steel- Gold, Copper, Nickel Noir	
MADI-3004/6	Brass	

**OAK OR WALNUT (5% or 30% SHEEN)**

MADI-3004/7	Stainless Steel	
MADI-3004/8	Polished Plated Stainless Steel- Gold, Copper, Nickel Noir	
MADI-3004/9	Brass	

**RECONSTITUTED EBONY, OAK FUME, OR RECONSTITUTED ROSEWOOD**

MADI-3004/10	Stainless Steel	
MADI-3004/11	Polished Plated Stainless Steel- Gold, Copper, Nickel Noir	
MADI-3004/12	Brass	

**NATURAL EBONY**

MADI-3004/13	Stainless Steel	
MADI-3004/14	Polished Plated Stainless Steel- Gold, Copper, Nickel Noir	
MADI-3004/15	Brass	

UPCHARGE	IR Remote	
UPCHARGE	Marble Top	
UPCHARGE	Reverse Painted Glass Top	

**PAPILLON Media Cabinet (1BASTV0228PA)**

6x Doors  
Wood Top and Front Door Accent, Lacquer Body, Legs & Pinstripes  
Polished Stainless Steel Accents

87 3/4"      23 5/8"      19 5/8"



\*LEGS AVAILABLE IN WOOD STAINS\*

**FINISH OPTIONS**

PAPIL-106/1	Oak (5% or 30% Sheen)	
PAPIL-106/2	Eucalyptus Stain	
PAPIL-106/3	Walnut (5% or 30% Sheen)	
PAPIL-106/4	Lacquer	
PAPIL-106/5	Reconstituted Ebony, Oak Fume or Reconstituted Rosewood	
PAPIL-106/6	Eucalyptus Frise or Natural Rosewood	
PAPIL-106/8	Natural Ebony	

**OPTIONAL METAL**

UPCHARGE	Polished Plated Stainless Steel- Gold, Copper, Nickel Noir	
UPCHARGE	Brass	

**WOOD SIDES & FRONTS**

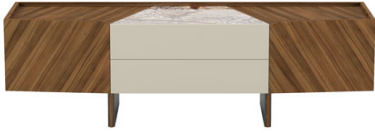
UPCHARGE	Oak (5% or 30% Sheen)	
UPCHARGE	Eucalyptus Stain OR Walnut (5% or 30% Sheen)	
UPCHARGE	Eucalyptus Frise, Oak Fume, Recon Ebony or Rosewood	
UPCHARGE	Natural Ebony	

PLEASE NOTE: It is the responsibility of the customer to ensure that the correct hardware is used when hanging wall modules; manufacturer cannot supply hardware for every type of situation.

MEDIA SYSTEM	Description		Dimensions in Inches		
	Item No.	Finish	W	H	D

**PETRAH TV Unit (1BST180PET)**  
 2x Doors, 2x Touch Latch Drawers & 2x Interior Shelves  
 Wood Case & Top w/ Lacquer Drawer Fronts  
 Marble, Ceramic or Wood Top Accent (Must be Added)  
 Epoxy Metal Foot w/ Solid Wood Accent

70 7/8"                      23 5/8"                      17 3/4"



**FINISH OPTIONS**

<b>PETR-201/1</b>	Eucalyptus Stain	
<b>PETR-201/2</b>	Eucalyptus Frisé or Natural Rosewood	
<b>PETR-201/3</b>	Walnut (5% or 30% Sheen)	
<b>PETR-201/4</b>	Oak (5% or 30% Sheen)	
<b>PETR-201/5</b>	Oak Fumé, Reconstituted Ebony, Reconstituted Rosewood	
<b>PETR-201/6</b>	Natural Ebony	

**MARBLE TOP OPTIONS \* MUST ADD TO SIDEBOARD\***

<b>UPCHARGE</b>	Standard Marble	
<b>UPCHARGE</b>	Forest Brown Marble <i>*Special Marble*</i>	
<b>UPCHARGE</b>	Cappiccino Marble <i>*Special Marble*</i>	
<b>UPCHARGE</b>	Cipolino Verde Marble <i>*Special Marble*</i>	
<b>UPCHARGE</b>	Blue Roma Marble <i>*Special Marble*</i>	

*\* Price may change depending on ordered quantities due to the optimization of slab.*

**CERAMIC TOP OPTIONS \* MUST ADD TO SIDEBOARD\***

<b>UPCHARGE</b>	Standard Ceramic	
-----------------	------------------	--

**WOOD TOP OPTIONS \* MUST ADD TO SIDEBOARD\***

<b>UPCHARGE</b>	Veneer Top (All Woods Above)	
-----------------	------------------------------	--

**DRAWER FRONTS IN WOOD INSTEAD OF LACQUER**

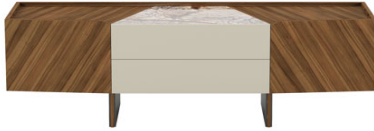
<b>UPCHARGE</b>	Veneer Drawer Fronts (All Woods Above)	
-----------------	--	--

<b>UPCHARGE</b>	Cable Management	
-----------------	------------------	--



PLEASE NOTE: It is the responsibility of the customer to ensure that the correct hardware is used when hanging wall modules; manufacturer cannot supply hardware for every type of situation.

MEDIA SYSTEM	Description		Dimensions in Inches		
	Item No.	Finish	W	H	D



**PETRAH Sideboard (1BST220PET)**  
 2x Doors, 2x Touch Latch Drawers & 2x Interior Shelves  
 Wood Case & Top w/ Lacquer Drawer Fronts  
 Marble or Ceramic Top Accent (Must be Added)  
 Epoxy Metal Foot w/ Solid Wood Accent

86 5/8"      23 5/8"      17 3/4"

**FINISH OPTIONS**

<b>PETR-202/1</b>	Eucalyptus Stain	
<b>PETR-202/2</b>	Eucalyptus Frisé or Natural Rosewood	
<b>PETR-202/3</b>	Walnut (5% or 30% Sheen)	
<b>PETR-202/4</b>	Oak (5% or 30% Sheen)	
<b>PETR-202/5</b>	Oak Fumé, Reconstituted Ebony, Reconstituted Rosewood	
<b>PETR-202/6</b>	Natural Ebony	

**MARBLE TOP OPTIONS \* MUST ADD TO SIDEBOARD\***

<b>UPCHARGE</b>	Standard Marble	
<b>UPCHARGE</b>	Forest Brown Marble *Special Marble*	
<b>UPCHARGE</b>	Cappiccino Marble *Special Marble*	
<b>UPCHARGE</b>	Cipolino Verde Marble *Special Marble*	
<b>UPCHARGE</b>	Blue Roma Marble *Special Marble*	

\* Price may change depending on ordered quantities due to the optimization of slab.



**CERAMIC TOP OPTIONS \* MUST ADD TO SIDEBOARD\***

<b>UPCHARGE</b>	Standard Ceramic	
-----------------	------------------	--

**WOOD TOP OPTIONS \* MUST ADD TO SIDEBOARD\***

<b>UPCHARGE</b>	Veneer Top (All Woods Above)	
-----------------	------------------------------	--

**DRAWER FRONTS IN WOOD INSTEAD OF LACQUER**

<b>UPCHARGE</b>	Veneer Drawer Fronts (All Woods Above)	
-----------------	--	--

<b>UPCHARGE</b>	Cable Management	
-----------------	------------------	--

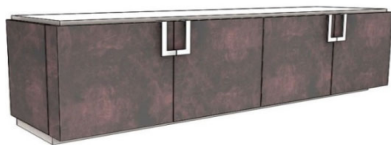
**PORTOBELLO Media Cabinet (1BASPRT220PB)**

4x Doors & 2x Lacquer Shelves  
 Lacquer Top, Plinth & Interior  
 Polished Stainless Steel Accents

86 5/8"      21 5/8"      19 5/8"

**FINISH OPTIONS**

<b>PORTO-107/1</b>	Eucalyptus Frise or Natural Rosewood	
<b>PORTO-107/2</b>	All Lacquer	
<b>PORTO-107/3</b>	Oak or Walnut (5% or 30% Sheen)	
<b>PORTO-107/5</b>	Reconstituted Ebony, Oak Fume or Reconstituted Rosewood	
<b>PORTO-107/6</b>	Natural Ebony	
<b>PORTO-107/7</b>	Eucalyptus Stain	



2 vol. / 0.790 m3 / 118 Kg

**OPTIONAL TOP FINISHES**

<b>UPCHARGE</b>	Marble Top	
<b>UPCHARGE</b>	Ceramic Top	
<b>UPCHARGE</b>	Reversed Painted Glass Top	

**OPTIONAL METAL FINISHES**

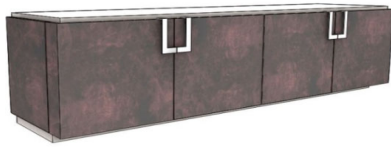
<b>UPCHARGE</b>	Polished Plated Stainless Steel- Gold, Copper, Nickel Noir	
<b>UPCHARGE</b>	Brass	

<b>UPCHARGE</b>	SAT Repeater - IR	
-----------------	-------------------	--

PLEASE NOTE: It is the responsibility of the customer to ensure that the correct hardware is used when hanging wall modules; manufacturer cannot supply hardware for every type of situation.

# MEDIA SYSTEM

Description		Dimensions in Inches		
Item No.	Finish	W	H	D



2 vol. / 0.715 m3 / 106 Kg

### PORTOBELLO Media Cabinet (1BASPR200PB)

4x Doors & 2x Lacquer Shelves  
Lacquer Top, Plinth & Interior  
Polished Stainless Steel Accents

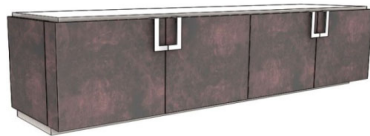
78 3/4"      21 5/8"      19 5/8"

FINISH OPTIONS	
PORTO-108/1	Eucalyptus Frise or Natural Rosewood
PORTO-108/2	All Lacquer
PORTO-108/3	Oak or Walnut (5% or 30% Sheen)
PORTO-108/5	Reconstituted Ebony, Oak Fume or Reconstituted Rosewood
PORTO-108/6	Natural Ebony
PORTO-108/7	Eucalyptus Stain

OPTIONAL TOP FINISHES	
UPCHARGE	Marble Top
UPCHARGE	Ceramic Top
UPCHARGE	Reversed Painted Glass Top

OPTIONAL METAL FINISHES	
UPCHARGE	Polished Plated Stainless Steel- Gold, Copper, Nickel Noir
UPCHARGE	Brass

UPCHARGE	SAT Repeater - IR
----------	-------------------



2 vol. / 0.644 m3 / 100 Kg

### PORTOBELLO Media Cabinet (1BASPR180PB)

4x Doors & 2x Lacquer Shelves  
Lacquer Top, Plinth & Interior  
Polished Stainless Steel Accents

70 7/8"      21 5/8"      19 5/8"

FINISH OPTIONS	
PORTO-109/1	Eucalyptus Frise or Natural Rosewood
PORTO-109/2	All Lacquer
PORTO-109/3	Oak or Walnut (5% or 30% Sheen)
PORTO-109/5	Reconstituted Ebony, Oak Fume or Reconstituted Rosewood
PORTO-109/6	Natural Ebony
PORTO-109/7	Eucalyptus Stain

OPTIONAL TOP FINISHES	
UPCHARGE	Marble Top
UPCHARGE	Ceramic Top
UPCHARGE	Reversed Painted Glass Top
UPCHARGE	Wood Top is 7% Upcharge on Specified Finish

OPTIONAL METAL FINISHES	
UPCHARGE	Polished Plated Stainless Steel- Gold, Copper, Nickel Noir
UPCHARGE	Brass

UPCHARGE	SAT Repeater - IR
----------	-------------------

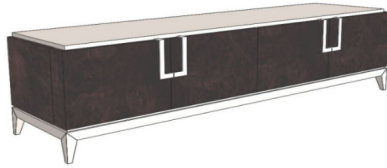
PLEASE NOTE: It is the responsibility of the customer to ensure that the correct hardware is used when hanging wall modules; manufacturer cannot supply hardware for every type of situation.

MEDIA SYSTEM	Description		Dimensions in Inches		
	Item No.	Finish	W	H	D

**PORTOBELLO Media Cabinet on Legs**

4x Doors & 2x Lacquer Shelves  
 Lacquer Top, Feet & Interior  
 Polished Stainless Steel Accents

86 5/8"      21 5/8"      19 5/8"



2 vol. / 0.790 m3 / 118 Kg

**FINISH OPTIONS**

PORTO-118/1	Eucalyptus Frise or Natural Rosewood	
PORTO-118/2	All Lacquer	
PORTO-118/3	Oak or Walnut (5% or 30% Sheen)	
PORTO-118/5	Reconstituted Ebony, Oak Fume or Reconstituted Rosewood	
PORTO-118/6	Natural Ebony	
PORTO-118/7	Eucalyptus Stain	

**OPTIONAL TOP FINISHES**

UPCHARGE	Marble Top	
UPCHARGE	Ceramic Top	
UPCHARGE	Reversed Painted Glass Top	

**OPTIONAL METAL FINISHES**

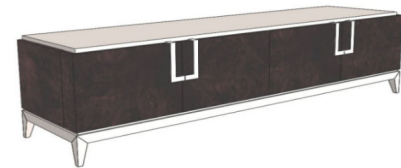
UPCHARGE	Polished Plated Stainless Steel- Gold, Copper, Nickel Noir	
UPCHARGE	Brass	

UPCHARGE	SAT Repeater - IR	
----------	-------------------	--

**PORTOBELLO Media Cabinet on Legs**

4x Doors & 2x Lacquer Shelves  
 Lacquer Top, Feet & Interior  
 Polished Stainless Steel Accents

78 3/4"      21 5/8"      19 5/8"



2 vol. / 0.715 m3 / 106 Kg

**FINISH OPTIONS**

PORTO-119/1	Eucalyptus Frise or Natural Rosewood	
PORTO-119/2	All Lacquer	
PORTO-119/3	Oak or Walnut (5% or 30% Sheen)	
PORTO-119/5	Reconstituted Ebony, Oak Fume or Reconstituted Rosewood	
PORTO-119/6	Natural Ebony	
PORTO-119/7	Eucalyptus Stain	

**OPTIONAL TOP FINISHES**

UPCHARGE	Marble Top	
UPCHARGE	Ceramic Top	
UPCHARGE	Reversed Painted Glass Top	

**OPTIONAL METAL FINISHES**

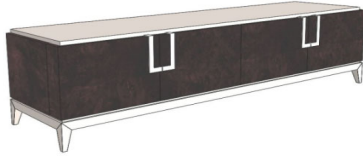
UPCHARGE	Polished Plated Stainless Steel- Gold, Copper, Nickel Noir	
UPCHARGE	Brass	

UPCHARGE	SAT Repeater - IR	
----------	-------------------	--

PLEASE NOTE: It is the responsibility of the customer to ensure that the correct hardware is used when hanging wall modules; manufacturer cannot supply hardware for every type of situation.



MEDIA SYSTEM	Description		Dimesions in Inches		
	Item No.	Finish	W	H	D



2 vol. / 0.644 m3 / 100 Kg

**PORTOBELLO Media Cabinet on Legs**

4x Doors & 2x Lacquer Shelves  
 Lacquer Top, Feet & Interior  
 Polished Stainless Steel Accents

70 7/8"      21 5/8"      19 5/8"

**FINISH OPTIONS**

<b>PORTO-120/1</b>	Eucalyptus Frise or Natural Rosewood
<b>PORTO-120/2</b>	All Lacquer
<b>PORTO-120/3</b>	Oak or Walnut (5% or 30% Sheen)
<b>PORTO-120/5</b>	Reconstituted Ebony, Oak Fume or Reconstituted Rosewood
<b>PORTO-120/6</b>	Natural Ebony
<b>PORTO-120/7</b>	Eucalyptus Stain

**OPTIONAL TOP FINISHES**

<b>UPCHARGE</b>	Marble Top
<b>UPCHARGE</b>	Ceramic Top
<b>UPCHARGE</b>	Reversed Painted Glass Top
<b>UPCHARGE</b>	Wood Top is 7% Upcharge on Specified Finish

**OPTIONAL METAL FINISHES**

<b>UPCHARGE</b>	Polished Plated Stainless Steel- Gold, Copper, Nickel Noir
<b>UPCHARGE</b>	Brass

<b>UPCHARGE</b>	SAT Repeater - IR
-----------------	-------------------

**SLICE Media Cabinet (1BAS2GV220SI)**

1x Door, 1x Dropdown Door, 2x Drawers  
 Epoxy Feet - Lacquer Painted  
 Criss Cross Effect on Fronts/ Top is Plain

86 5/8"      25 5/8"      19 5/8"



<b>SLICE-104</b>	Lacquer w/ Oak or Walnut Accent
------------------	---------------------------------

<b>UPCHARGE</b>	Cable Management on Top
<b>UPCHARGE</b>	IR
<b>UPCHARGE</b>	Polished Stainless Steel Feet

**SLICE Media Cabinet (1BAS2GV180SI)**

1x Door, 1x Dropdown Door, 2x Drawers  
 Epoxy Feet - Lacquer Painted  
 Criss Cross Effect on Fronts/ Top is Plain

70 7/8"      25 5/8"      19 5/8"



<b>SLICE-105</b>	Lacquer w/ Oak or Walnut Accent
------------------	---------------------------------

<b>UPCHARGE</b>	Cable Management on Top
<b>UPCHARGE</b>	IR
<b>UPCHARGE</b>	Polished Stainless Steel Feet

**SLICE Shelf Module (1PNLEST120SI)**

Lacquered Back  
 Glass Shelf

47 1/4"      12 5/8"      9 1/2"



<b>SLICE-106</b>	Lacquer w/ Oak or Walnut Accent
------------------	---------------------------------

<b>UPCHARGE</b>	LED Lighting
-----------------	--------------

PLEASE NOTE: It is the responsibility of the customer to ensure that the correct hardware is used when hanging wall modules; manufacturer cannot supply hardware for every type of situation.

MEDIA SYSTEM	Description		Dimensions in Inches		
	Item No.	Finish	W	H	D

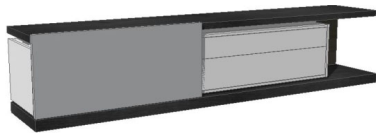


**SLICE A Composition Includes:**  
 SLICE Bar Unit (SLICE-103)  
 SLICE Media Cabinet (SLICE-104)  
 2x SLICE Shelf Modules (SLICE-106)

<b>SLICE-107</b>	Lacquer w/ Oak or Walnut Accent			
<b>UPCHARGE</b>	Cable Management on Top			
<b>UPCHARGE</b>	IR			
<b>UPCHARGE</b>	Polished Stainless Steel Feet			

**SLIDING Media Cabinet (1BAS1PT290SL)**  
 1x Sliding Door, 2x Drawers, 1x Tempered Glass Shelf  
 Matte Lacquer Structure/ HG Lacquer Fronts  
 Wood or Lacquer Top & Plinth

114 1/4"      25 3/4"      21 5/8"



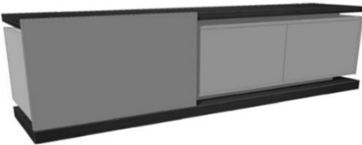
3 vol. / 1.438 m3 / 180 kg

FINISH OPTIONS		
<b>SLIDIN-827/1</b>	Eucalyptus Frise or Natural Rosewood	
<b>SLIDIN-827/3</b>	Reconstituted Ebony, Oak Fume or Reconstituted Rosewood	
<b>SLIDIN-827/4</b>	Natural Ebony	
<b>SLIDIN-827/5</b>	Eucalyptus Stain	
<b>SLIDIN-827/6</b>	Oak (5% or 30% Sheen)	
<b>SLIDIN-827/7</b>	Walnut (5% or 30% Sheen)	
<b>SLIDIN-827/8</b>	All Lacquer	

<b>UPCHARGE</b>	Wood Sliding Door (Any Veneer)	
<b>UPCHARGE</b>	LED Lights	

**SLIDING Media Cabinet (1APA3PT240SLB)**  
 1x Sliding Door, 2x Touch Latch Doors, 2x Interior Lacquer Shelves  
 Matte Lacquer Structure/ HG Lacquer Fronts  
 Wood or Lacquer Top & Plinth

94 1/2"      22 7/8"      21 5/8"



2 vol. / 1.297 m3 / 162 Kg

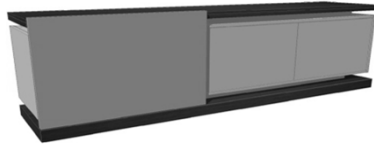
FINISH OPTIONS		
<b>SLIDIN-817/1</b>	Eucalyptus Frise or Natural Rosewood	
<b>SLIDIN-817/3</b>	Reconstituted Ebony, Oak Fume or Reconstituted Rosewood	
<b>SLIDIN-817/4</b>	Natural Ebony	
<b>SLIDIN-817/5</b>	Eucalyptus Stain	
<b>SLIDIN-817/6</b>	Oak (5% or 30% Sheen)	
<b>SLIDIN-817/7</b>	Walnut (5% or 30% Sheen)	
<b>SLIDIN-817/8</b>	All Lacquer	

<b>UPCHARGE</b>	Wood Sliding Door (Any Veneer)	
<b>UPCHARGE</b>	LED Lights	

PLEASE NOTE: It is the responsibility of the customer to ensure that the correct hardware is used when hanging wall modules; manufacturer cannot supply hardware for every type of situation.

MEDIA SYSTEM	Description		Dimensions in Inches		
	Item No.	Finish	W	H	D

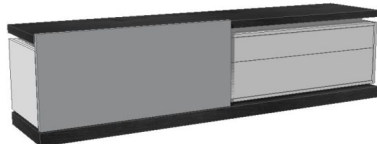
**SLIDING Media Cabinet (1APA3PT200SLB)**  
 1x Sliding Door, 2x Touch Latch Doors, 2x Interior Lacquer Shelves  
 Matte Lacquer Structure/ HG Lacquer Fronts  
 Wood or Lacquer Top & Plinth  
 78 3/4"      22 7/8"      21 5/8"



FINISH OPTIONS		
SLIDIN-818/1	Eucalyptus Frise or Natural Rosewood	
SLIDIN-818/3	Reconstituted Ebony, Oak Fume or Reconstituted Rosewood	
SLIDIN-818/4	Natural Ebony	
SLIDIN-818/5	Eucalyptus Stain	
SLIDIN-818/6	Oak (5% or 30% Sheen)	
SLIDIN-818/7	Walnut (5% or 30% Sheen)	
SLIDIN-818/8	All Lacquer	

<b>UPCHARGE</b>	LED Lights	
-----------------	------------	--

**SLIDING Media Cabinet (1BAS1PT240SL)**  
 1x Sliding Door, 2 Drawer, 1x Tempered Glass Shelf  
 Matte Lacquer Structure/ HG Lacquer Fronts  
 Wood or Lacquer Top & Plinth  
 94 1/2"      25 3/4"      21 5/8"

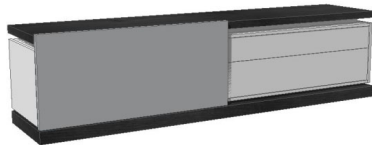


FINISH OPTIONS		
SLIDIN-826/1	Eucalyptus Frise or Natural Rosewood	
SLIDIN-826/3	Reconstituted Ebony, Oak Fume or Reconstituted Rosewood	
SLIDIN-826/4	Natural Ebony	
SLIDIN-826/5	Eucalyptus Stain	
SLIDIN-826/6	Oak (5% or 30% Sheen)	
SLIDIN-826/7	Walnut (5% or 30% Sheen)	
SLIDIN-826/8	All Lacquer	

3 vol. / 1.211 m3 / 164 kg

<b>UPCHARGE</b>	LED Lights	
-----------------	------------	--

**SLIDING Media Cabinet**  
 1x Sliding Door, 2 Drawer, 1x Tempered Glass Shelf  
 Matte Lacquer Structure/ HG Lacquer Fronts  
 Wood or Lacquer Top & Plinth  
 78 3/4"      25 3/4"      21 5/8"



FINISH OPTIONS		
SLIDIN-828/1	Eucalyptus Frise or Natural Rosewood	
SLIDIN-828/3	Reconstituted Ebony, Oak Fume or Reconstituted Rosewood	
SLIDIN-828/4	Natural Ebony	
SLIDIN-828/5	Eucalyptus Stain	
SLIDIN-828/6	Oak (5% or 30% Sheen)	
SLIDIN-828/7	Walnut (5% or 30% Sheen)	
SLIDIN-828/8	All Lacquer	

3 vol. / 1.032 m3 / 129 kg

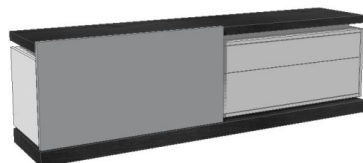
<b>UPCHARGE</b>	LED Lights	
-----------------	------------	--

PLEASE NOTE: It is the responsibility of the customer to ensure that the correct hardware is used when hanging wall modules; manufacturer cannot supply hardware for every type of situation.

MEDIA SYSTEM	Description		Dimensions in Inches		
	Item No.	Finish	W	H	D

**SLIDING Media Cabinet**  
 1x Sliding Door, 2 Drawer, 1x Tempered Glass Shelf  
 Matte Lacquer Structure/ HG Lacquer Fronts  
 Wood or Lacquer Top & Plinth

63"                      25 3/4"                      21 5/8"



3 vol. / 0.858 m3 / 124 kg

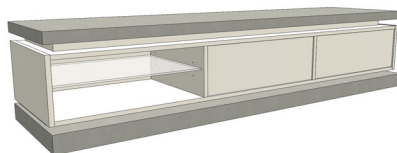
**FINISH OPTIONS**

SLIDIN-829/1	Eucalyptus Frise or Natural Rosewood	
SLIDIN-829/3	Reconstituted Ebony, Oak Fume or Reconstituted Rosewood	
SLIDIN-829/4	Natural Ebony	
SLIDIN-829/5	Eucalyptus Stain	
SLIDIN-829/6	Oak (5% or 30% Sheen)	
SLIDIN-829/7	Walnut (5% or 30% Sheen)	
SLIDIN-829/8	All Lacquer	

<b>UPCHARGE</b>	LED Lights	
-----------------	------------	--

**SLIDING Media Cabinet (1BAS2GV240SL)**  
 2x Drawers, 1x Tempered Glass Shelf  
 Matte Lacquer Structure/ HG Lacquer Fronts  
 Wood or Lacquer Top & Plinth

94 1/2"                      18 7/8"                      21 5/8"



1 vol. / 0.730 m3 / 140 Kg

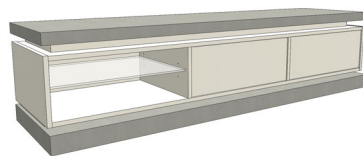
**FINISH OPTIONS**

SLIDIN-807/1	Eucalyptus Frise or Natural Rosewood	
SLIDIN-807/3	Reconstituted Ebony, Oak Fume or Reconstituted Rosewood	
SLIDIN-807/4	Natural Ebony	
SLIDIN-807/5	Eucalyptus Stain	
SLIDIN-807/6	Oak (5% or 30% Sheen)	
SLIDIN-807/7	Walnut (5% or 30% Sheen)	
SLIDIN-807/8	All Lacquer	

<b>UPCHARGE</b>	LED Lights	
-----------------	------------	--

**SLIDING Media Cabinet (1BAS2GV200SL)**  
 2x Drawers, 1x Tempered Glass Shelf  
 Matte Lacquer Structure/ HG Lacquer Fronts  
 Wood or Lacquer Top & Plinth

78 3/4"                      18 7/8"                      21 5/8"



1 vol. / 0.611 m3 / 103 Kg

**FINISH OPTIONS**

SLIDIN-830/1	Eucalyptus Frise or Natural Rosewood	
SLIDIN-830/3	Reconstituted Ebony, Oak Fume or Reconstituted Rosewood	
SLIDIN-830/4	Natural Ebony	
SLIDIN-830/5	Eucalyptus Stain	
SLIDIN-830/6	Oak (5% or 30% Sheen)	
SLIDIN-830/7	Walnut (5% or 30% Sheen)	
SLIDIN-830/8	All Lacquer	

<b>UPCHARGE</b>	LED Lights	
-----------------	------------	--

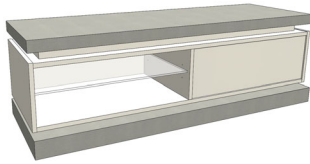
PLEASE NOTE: It is the responsibility of the customer to ensure that the correct hardware is used when hanging wall modules; manufacturer cannot supply hardware for every type of situation.

MEDIA SYSTEM	Description		Dimesions in Inches		
	Item No.	Finish	W	H	D

**SLIDING Media Cabinet (1BAS1GV160SL)**

1x Drawer , 1x Tempered Glass Shelf  
Matte Lacquer Structure/ HG Lacquer Fronts  
Wood or Lacquer Top & Plinth

63" 18 7/8" 21 5/8"



1 vol. / 0,533m3 / 93 Kg

**FINISH OPTIONS**

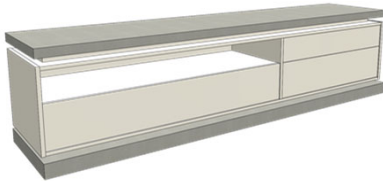
SLIDIN-806/1	Eucalyptus Frise or Natural Rosewood
SLIDIN-806/3	Reconstituted Ebony, Oak Fume or Reconstituted Rosewood
SLIDIN-806/4	Natural Ebony
SLIDIN-806/5	Eucalyptus Stain
SLIDIN-806/6	Oak (5% or 30% Sheen)
SLIDIN-806/7	Walnut (5% or 30% Sheen)
SLIDIN-806/8	All Lacquer

<b>UPCHARGE</b>	LED Lights
-----------------	------------

**SLIDING G Media Cabinet (1BAS3GV240SL)**

3x Drawers  
Matte Lacquer Structure/ HG Lacquer Fronts  
Wood or Lacquer Top & Plinth

94 1/2" 25 3/8" 21 5/8"



1 vol. / 1,098m3 / 155 Kg

**FINISH OPTIONS**

SLIDIN-821/1	Eucalyptus Frise or Natural Rosewood
SLIDIN-821/3	Reconstituted Ebony, Oak Fume or Reconstituted Rosewood
SLIDIN-821/4	Natural Ebony
SLIDIN-821/5	Eucalyptus Stain
SLIDIN-821/6	Oak (5% or 30% Sheen)
SLIDIN-821/7	Walnut (5% or 30% Sheen)
SLIDIN-821/8	All Lacquer

<b>UPCHARGE</b>	LED Lights
-----------------	------------

**1x STRIPES Shelves Module (1MODPRA140ST)**

Back Panel is Always in Matte Lacquer  
Can be installed Horizontally or Vertically

55 1/8" 15 3/4" 13"



1 vol. / 0,220 m3 / 28 Kg

<b>STRIPE-719</b>	All Lacquer
-------------------	-------------

Max Weight to add on Shelves = 22 lbs

**1x STRIPES Shelves Module (1MODPRA200ST)**

Back Panel is Always in Matte Lacquer  
Can be installed Horizontally or Vertically

78 3/4" 15 3/4" 13"



1 vol. / 0,319 m3 / 39 Kg

<b>STRIPE-720</b>	All Lacquer
-------------------	-------------

Max Weight to add on Shelves = 22 lbs

PLEASE NOTE: It is the responsibility of the customer to ensure that the correct hardware is used when hanging wall modules; manufacturer cannot supply hardware for every type of situation.



MEDIA SYSTEM	Description		Dimensions in Inches		
	Item No.	Finish	W	H	D

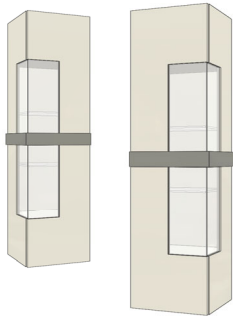


1 vol. / 0.280 m3 / 40 Kg

**SLIDING Shelf Module (1MODPRA600SL)**  
 Back Panel is Always in Oak (5% or 30% Sheen)  
 23 5/8"      49 5/8"      10 3/8"

<b>SLIDIN-822</b>	Lacquer Shelves			
-------------------	-----------------	--	--	--

Max Weight to add on Shelves = 22 lbs



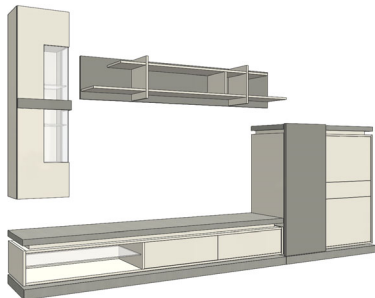
2 vol. / 0,296 m3 / 44 Kg

**STRIPES Wall Vitrine (L-1MODPVE160ST or R-1MODPRP400ST)**  
 2x Interior Lacquer Shelves & 2x Glass Shelves  
 Matte Lacquer Structure/ HG Lacquer Fronts  
 15 3/4"      63"      13"

<b>STRIPE-721</b>	All Lacquer			
-------------------	-------------	--	--	--

<b>UPCHARGE</b>	LED Lights			
-----------------	------------	--	--	--

**SLIDING A Composition Includes:**  
 SLIDING Media Cabinet 94 1/2" W (SLIDIN-807)  
 SLIDING Bar Unit 57" H (SLIDIN-801)  
 STRIPES Wall Vitrine Module 63" H (STRIPE-721)  
 STRIPES Shelves Module 78 3/4" W (STRIPE-720)  
 141 3/4"      93 3/8"      21 5/8"



**FINISH OPTIONS**

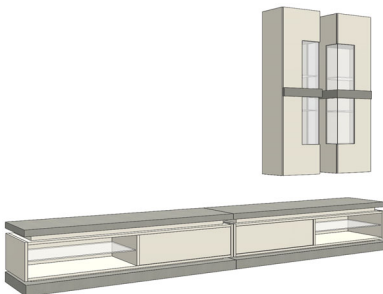
<b>SLIDIN-808/1</b>	Eucalyptus Frise or Natural Rosewood			
<b>SLIDIN-808/3</b>	Reconstituted Ebony, Oak Fume or Reconstituted Rosewood			
<b>SLIDIN-808/4</b>	Natural Ebony			
<b>SLIDIN-808/5</b>	Eucalyptus Stain			
<b>SLIDIN-808/6</b>	Oak (5% or 30% Sheen)			
<b>SLIDIN-808/7</b>	Walnut (5% or 30% Sheen)			
<b>SLIDIN-808/8</b>	All Lacquer			

<b>UPCHARGE</b>	LED Lights			
-----------------	------------	--	--	--

**SLIDING B Composition Includes:**  
 SLIDING Media Cabinet 63" W (SLIDIN-806)  
 SLIDING Media Cabinet 63" W (SLIDIN-806)  
 STRIPES Wall Vitrine Module 63" H (STRIPE-721)  
 STRIPES Wall Vitrine Module 63" H (STRIPE-721)  
 126"      93 3/8"      21 5/8"

**FINISH OPTIONS**

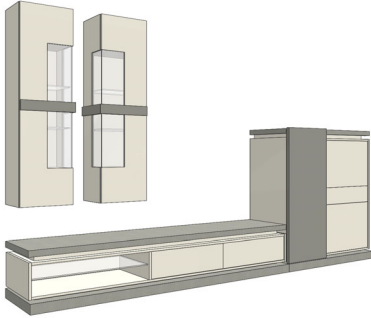
<b>SLIDIN-809/1</b>	Eucalyptus Frise or Natural Rosewood			
<b>SLIDIN-809/3</b>	Reconstituted Ebony, Oak Fume or Reconstituted Rosewood			
<b>SLIDIN-809/4</b>	Natural Ebony			
<b>SLIDIN-809/5</b>	Eucalyptus Stain			
<b>SLIDIN-809/6</b>	Oak (5% or 30% Sheen)			
<b>SLIDIN-809/7</b>	Walnut (5% or 30% Sheen)			
<b>SLIDIN-809/8</b>	All Lacquer			



<b>UPCHARGE</b>	LED Lights			
-----------------	------------	--	--	--

PLEASE NOTE: It is the responsibility of the customer to ensure that the correct hardware is used when hanging wall modules; manufacturer cannot supply hardware for every type of situation.

MEDIA SYSTEM	Description		Dimensions in Inches		
	Item No.	Finish	W	H	D

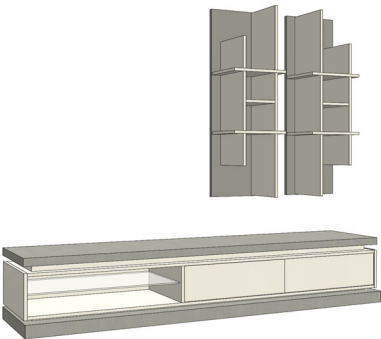


**SLIDING C Composition Includes:**  
 STRIPES Wall Vitrine Module 63" H (STRIPE-721)  
 STRIPES Wall Vitrine Module 63" H (STRIPE-721)  
 SLIDING Media Cabinet 94 1/2" W (SLIDIN-807)  
 SLIDING Bar Unit 57" H (SLIDIN-801)

141 3/4"      93 3/8"      21 5/8"

FINISH OPTIONS		
SLIDIN-810/1	Eucalyptus Frise or Natural Rosewood	
SLIDIN-810/3	Reconstituted Ebony, Oak Fume or Reconstituted Rosewood	
SLIDIN-810/4	Natural Ebony	
SLIDIN-810/5	Eucalyptus Stain	
SLIDIN-810/6	Oak (5% or 30% Sheen)	
SLIDIN-810/7	Walnut (5% or 30% Sheen)	
SLIDIN-810/8	All Lacquer	

<b>UPCHARGE</b>	LED Lights	
-----------------	------------	--

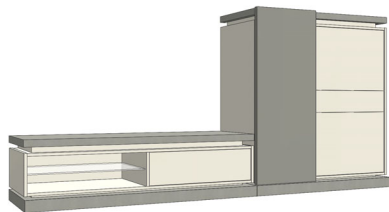


**SLIDING D Composition Includes:**  
 STRIPES Shelves Module 55 1/8" W (STRIPE-719)  
 STRIPES Shelves Module 55 1/8" W (STRIPE-719)  
 SLIDING Media Cabinet 94 1/2" W (SLIDIN-807)

94 1/2"      85 1/2"      21 5/8"

FINISH OPTIONS		
SLIDIN-811/1	Eucalyptus Frise or Natural Rosewood	
SLIDIN-811/3	Reconstituted Ebony, Oak Fume or Reconstituted Rosewood	
SLIDIN-811/4	Natural Ebony	
SLIDIN-811/5	Eucalyptus Stain	
SLIDIN-811/6	Oak (5% or 30% Sheen)	
SLIDIN-811/7	Walnut (5% or 30% Sheen)	
SLIDIN-811/8	All Lacquer	

<b>UPCHARGE</b>	LED Lights	
-----------------	------------	--



**SLIDING E Composition Includes:**  
 SLIDING Media Cabinet 63" W (SLIDIN-806)  
 SLIDING Bar Unit 57" H (SLIDIN-801)

110 1/4"      57"      21 5/8"

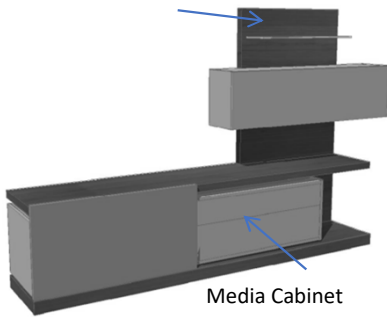
FINISH OPTIONS		
SLIDIN-812/1	Eucalyptus Frise or Natural Rosewood	
SLIDIN-812/3	Reconstituted Ebony, Oak Fume or Reconstituted Rosewood	
SLIDIN-812/4	Natural Ebony	
SLIDIN-812/5	Eucalyptus Stain	
SLIDIN-812/6	Oak (5% or 30% Sheen)	
SLIDIN-812/7	Walnut (5% or 30% Sheen)	
SLIDIN-812/8	All Lacquer	

<b>UPCHARGE</b>	LED Lights	
-----------------	------------	--

PLEASE NOTE: It is the responsibility of the customer to ensure that the correct hardware is used when hanging wall modules; manufacturer cannot supply hardware for every type of situation.

MEDIA SYSTEM	Description		Dimensions in Inches		
	Item No.	Finish	W	H	D

Wall Modules



Media Cabinet

5 vol. / 1.809 m3 / 265 Kg

**SLIDING F Composition Includes:**

Media Cabinet w/ Sliding Door, 2x Drawers, Drop-Lid Wall Module & 1x Tempered Glass Shelf  
Matte Lacquer Structure/ HG Lacquer Fronts  
Accent Top, Plinth & Back Panel

126"      70 7/8"      21 5/8"

**FINISH OPTIONS**

SLIDIN-823/1	Eucalyptus Frise or Natural Rosewood	
SLIDIN-823/3	Reconstituted Ebony, Oak Fume or Reconstituted Rosewood	
SLIDIN-823/4	Natural Ebony	
SLIDIN-823/5	Eucalyptus Stain	
SLIDIN-823/6	Oak (5% or 30% Sheen)	
SLIDIN-823/7	Walnut (5% or 30% Sheen)	
SLIDIN-823/8	All Lacquer	

<b>UPCHARGE</b>	LED Lights	
-----------------	------------	--

**Wall Module Only**

Drop-Lid Lacquer Cabinet, 1x Tempered Glass Shelf  
Matte Lacquer Structure/ HG Lacquer Fronts  
Accent Back Panel

63"      45 1/2"      13"

**FINISH OPTIONS**

SLIDIN-823W/1	Eucalyptus Frise or Natural Rosewood	
SLIDIN-823W/3	Reconstituted Ebony, Oak Fume or Reconstituted Rosewood	
SLIDIN-823W/4	Natural Ebony	
SLIDIN-823W/5	Eucalyptus Stain	
SLIDIN-823W/6	Oak (5% or 30% Sheen)	
SLIDIN-823W/7	Walnut (5% or 30% Sheen)	
SLIDIN-823W/8	All Lacquer	

**SLIDING G Composition Includes:**

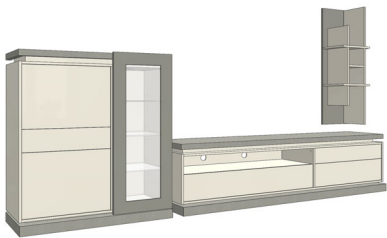
STRIPES Shelves Module 55 1/8" W (STRIPE-719)  
SLIDING G Media Cabinet 94 1/2" W (SLIDIN-821)  
STRIPES Shelves Module 55 1/8" W (STRIPE-719)

145 5/8"      84 1/2"      21 5/8"

**FINISH OPTIONS**

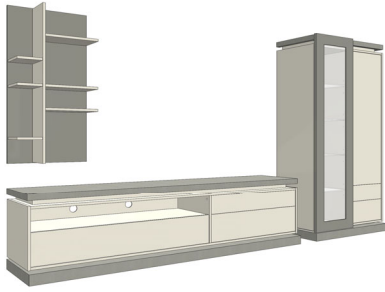
SLIDIN-824/1	Eucalyptus Frise or Natural Rosewood	
SLIDIN-824/3	Reconstituted Ebony, Oak Fume or Reconstituted Rosewood	
SLIDIN-824/4	Natural Ebony	
SLIDIN-824/5	Eucalyptus Stain	
SLIDIN-824/6	Oak (5% or 30% Sheen)	
SLIDIN-824/7	Walnut (5% or 30% Sheen)	
SLIDIN-824/8	All Lacquer	

<b>UPCHARGE</b>	LED Lights	
-----------------	------------	--



PLEASE NOTE: It is the responsibility of the customer to ensure that the correct hardware is used when hanging wall modules; manufacturer cannot supply hardware for every type of situation.

MEDIA SYSTEM	Description		Dimesions in Inches		
	Item No.	Finish	W	H	D



**SLIDING H Composition Includes:**

SLIDING G Media Cabinet 94 1/2" W (SLIDIN-821)

SLIDING B Vitrine 82 5/8" H (SLIDIN-820)

SLIDING Shelf Module 23 5/8"W (SLIDING-822)

141 3/4"

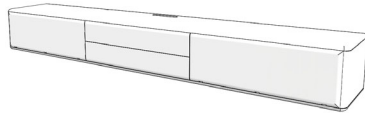
82 5/8"

21 5/8"

**FINISH OPTIONS**

SLIDIN-825/1	Eucalyptus Frise or Natural Rosewood
SLIDIN-825/3	Reconstituted Ebony, Oak Fume or Reconstituted Rosewood
SLIDIN-825/4	Natural Ebony
SLIDIN-825/5	Eucalyptus Stain
SLIDIN-825/6	Oak (5% or 30% Sheen)
SLIDIN-825/7	Walnut (5% or 30% Sheen)
SLIDIN-825/8	All Lacquer

UPCHARGE	LED Lights
----------	------------



1 vol. / 0.503 m3 / 79 Kg

**SWEET TEMPER A Media Cabinet - Wall Mounted (1BAS2GV250SW)**

2x Drop-lids, 2x Drawers

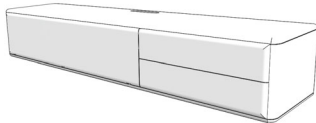
Cable management on top

98 1/2"

13 3/8"

16 1/2"

TEMP-101	All Lacquer
----------	-------------



1 vol. / 0.366 m3 / 64 Kg

**SWEET TEMPER C Media Cabinet - Wall Mounted (1BAS2GV180SW)**

1x Drop-lid, 2x Drawers

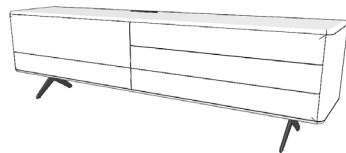
Cable management on top

70 7/8"

13 3/8"

16 1/2"

TEMP-102	All Lacquer
----------	-------------



2 vol. / 0.746 m3 / 95 Kg

**SWEET TEMPER D Media Cabinet - With Feet (1BAS4GV220SW)**

1x Drop-lids, 4x Drawers

Cable management on top

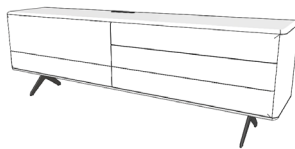
Painted Iron Feet - Optional Lacquer Color

86 5/8"

27 1/2"

16 1/2"

TEMP-103	All Lacquer
----------	-------------



2 vol. / 0.677 m3 / 81 Kg

**SWEET TEMPER B Media Cabinet - With Feet (1BAS4GV200SW)**

1x Drop-lids, 4x Drawers

Cable management on top

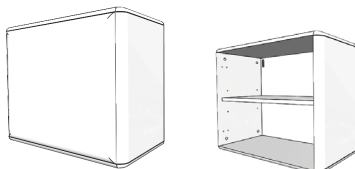
Painted Iron Feet - Optional Lacquer Color

78 3/4"

27 1/2"

16 1/2"

TEMP-104	All Lacquer
----------	-------------



1 vol. / 0.191 m3 / 25 Kg

**SWEET TEMPER Cube Wall Module (1MODPRP060SW)**

1x Door w/ Interior Shelf

23 5/8"

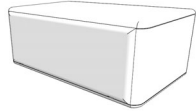
23 1/4"

15"

TEMP-105	All Lacquer
----------	-------------

PLEASE NOTE: It is the responsibility of the customer to ensure that the correct hardware is used when hanging wall modules; manufacturer cannot supply hardware for every type of situation.

MEDIA SYSTEM	Description		Dimensions in Inches		
	Item No.	Finish	W	H	D



1 vol. / 0.123 m3 / 30 Kg

**SWEET TEMPER C Wall Module (1BAS1PT070SW)**

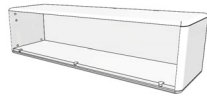
1x Drop-lid

27 1/2"

23 1/4"

16 1/2"

<b>TEMP-106</b>	All Lacquer
-----------------	-------------



1 vol. / 0.218 m3 / 40 Kg

**SWEET TEMPER Wall Module (1MODPRP125SW)**

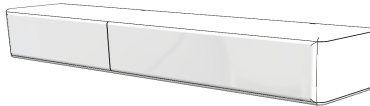
1x Drop-lid

49 1/4"

15"

15"

<b>TEMP-107</b>	All Lacquer
-----------------	-------------



1 vol. / 0.405 m3 / 65 Kg

**SWEET TEMPER Wall Module (1MODPRP200SW)**

2x Drop-lids

78 3/4"

15"

15"

<b>TEMP-108</b>	All Lacquer
-----------------	-------------



1 vol. / 0.052 m3 / 7 Kg

**SWEET TEMPER Open Cube Wall Module - Vertical (1MODPRA039SW)**

11"

15 3/8"

12 5/8"

**FINISH OPTIONS**

<b>TEMP-109/1</b>	Oak or Walnut (5%)
<b>TEMP-109/2</b>	Natural Ebony
<b>TEMP-109/3</b>	Reconstituted Ebony, Oak Fume or Reconstituted Rosewood
<b>TEMP-109/4</b>	Eucalyptus Frise or Natural Rosewood
<b>TEMP-109/6</b>	Eucalyptus Stain
<b>TEMP-109/7</b>	Lacquer

<b>UPCHARGE</b>	LED Lighting
-----------------	--------------



1 vol. / 0.098 m3 / 13 Kg

**SWEET TEMPER Open Shelf Wall Module - Vertical (1MODPRA076SW)**

11"

27 1/2"

12 5/8"

**FINISH OPTIONS**

<b>TEMP-110/1</b>	Oak or Walnut (5%)
<b>TEMP-110/2</b>	Natural Ebony
<b>TEMP-110/3</b>	Reconstituted Ebony, Oak Fume or Reconstituted Rosewood
<b>TEMP-110/4</b>	Eucalyptus Frise or Natural Rosewood
<b>TEMP-110/6</b>	Eucalyptus Stain
<b>TEMP-110/7</b>	Lacquer

<b>UPCHARGE</b>	LED Lighting
-----------------	--------------

PLEASE NOTE: It is the responsibility of the customer to ensure that the correct hardware is used when hanging wall modules; manufacturer cannot supply hardware for every type of situation.

MEDIA SYSTEM	Description		Dimensions in Inches		
	Item No.	Finish	W	H	D

**SWEET TEMPER Open Shelf Wall Module - Horizontal (1MODABR076SW)**

30"      11"      12 5/8"



1 vol. / 0.098 m3 / 13 Kg

FINISH OPTIONS		
TEMP-111/1	Oak or Walnut (5%)	
TEMP-111/2	Natural Ebony	
TEMP-111/3	Reconstituted Ebony, Oak Fume or Reconstituted Rosewood	
TEMP-111/4	Eucalyptus Frise or Natural Rosewood	
TEMP-111/6	Eucalyptus Stain	
TEMP-111/7	Lacquer	

<b>UPCHARGE</b>	LED Lighting	
-----------------	--------------	--

**SWEET TEMPER Wall Module - Vertical (1MODPRP076SW)**

1x Interior Shelf

11"      30"      13 3/8"



1 vol. / 0.104 m3 / 16 Kg

FINISH OPTIONS		
TEMP-112/1	Oak or Walnut (5%)	
TEMP-112/2	Natural Ebony	
TEMP-112/3	Reconstituted Ebony, Oak Fume or Reconstituted Rosewood	
TEMP-112/4	Eucalyptus Frise or Natural Rosewood	
TEMP-112/6	Eucalyptus Stain	
TEMP-112/7	Lacquer	

**SWEET TEMPER Wall Module - Vertical (1MODPRP110SW)**

2x Interior Shelves

11"      43 3/8"      13 3/8"



1 vol. / 0.146 m3 / 22 Kg

FINISH OPTIONS		
TEMP-113/1	Oak or Walnut (5%)	
TEMP-113/2	Natural Ebony	
TEMP-113/3	Reconstituted Ebony, Oak Fume or Reconstituted Rosewood	
TEMP-113/4	Eucalyptus Frise or Natural Rosewood	
TEMP-113/6	Eucalyptus Stain	
TEMP-113/7	Lacquer	

**SWEET TEMPER Wall Panel (1PNLEST080SW)**

1x Glass Shelf

31 1/2"      10 5/8"      7 7/8"



2 vol. / 0.054 m3 / 21 Kg

FINISH OPTIONS		
TEMP-114/1	Oak or Walnut (5%)	
TEMP-114/2	Natural Ebony	
TEMP-114/3	Reconstituted Ebony, Oak Fume or Reconstituted Rosewood	
TEMP-114/4	Eucalyptus Frise or Natural Rosewood	
TEMP-114/6	Eucalyptus Stain	
TEMP-114/7	Lacquer	

<b>UPCHARGE</b>	LED Lighting	
-----------------	--------------	--

PLEASE NOTE: It is the responsibility of the customer to ensure that the correct hardware is used when hanging wall modules; manufacturer cannot supply hardware for every type of situation.



MEDIA SYSTEM	Description		Dimesions in Inches		
	Item No.	Finish	W	H	D



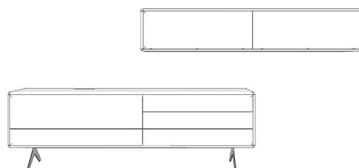
**SWEET TEMPER A1 Composition (1ESTSAL274SW)**

1x TEMP-101 ( 'A' Media Cabinet - Wall Mounted)  
 1x TEMP-105 (Cube Wall Module)

107 7/8"      43 3/8"      16 1/2"

<b>TEMP-200</b>	All Lacquer
-----------------	-------------

2 vol. / 0.694 m3 / 104 Kg



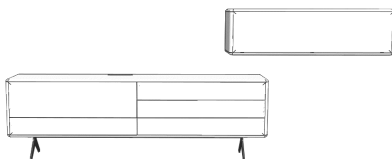
**SWEET TEMPER D1 Composition (1ESTMOD317SW)**

1x TEMP-103 ( 'D' Media Cabinet - With Feet)  
 1x TEMP-108 (Wall Module)

125"      56 3/4"      16 1/2"

<b>TEMP-202</b>	All Lacquer
-----------------	-------------

3 vol. / 1.151 m3 / 160 Kg



**SWEET TEMPER D2 Composition (1ESTMOD315SW)**

1x TEMP-103 ( 'D' Media Cabinet - With Feet)  
 1x TEMP-107 (Wall Module)

124"      56 3/4"      16 1/2"

<b>TEMP-203</b>	All Lacquer
-----------------	-------------

3 vol. / 0.964 m3 / 135 Kg

PLEASE NOTE: It is the responsibility of the customer to ensure that the correct hardware is used when hanging wall modules; manufacturer cannot supply hardware for every type of situation.