

PRESTIGE COLLECTION

BY ALEAL



PLANUM[®]
FURNITURE

Swedesford Corporate Center
619 B Swedesford Road
Frazer, PA 19355

Email: info@planumfurniture.com
Website: planumfurniture.com

Tel : 610/251-2120
Tel : 800/343-0042
Fax : 610/251-2290

ALEAL Finishes

LACQUER FINISHES



LC01 BLACK



LC02 WHITE



LC07 BRICK RED



LC11 TOMATO RED



LC12 SLATE GRAY



LC13 IVORY



LC14 METALLIC
GRAY



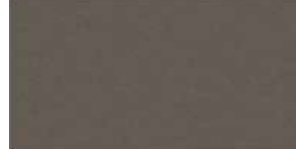
LC15 GRAY BEIGE



LC16 FOG GRAY



LC18 METALLIC
TAUPE



LC19 CAMOUFLAGE



LC20 GUN
METAL GRAY



LC21 MUSTARD
YELLOW



LC22 ASH GRAY



LC23 SILVER
GRAY



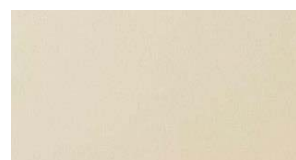
LC26 BURGANDY



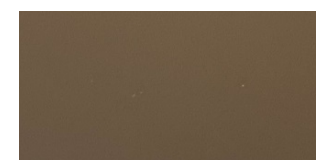
LC27 RUBY



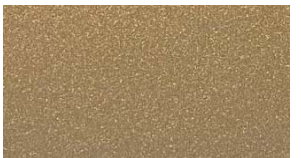
LC28 CAPPUCCINO



LC36 PEARL



LC37 PEWTER



LC38 PALOMINO



LC39 PETROL BLUE



BRONZE



SILVER



GOLD



CHAMPAGNE

PLEASE NOTE ABOVE LACQUERS ARE AVAILABLE IN THE BELOW SHEENS:

5% MATTE OR 30% SEMIGLOSS - USE MATTE PRICING

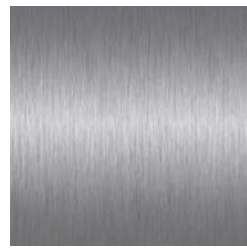
100% SHEEN - USE HIGH GLOSS PRICING

ALEAL Finishes

STAINLESS STEEL



POLISHED STAINLESS
STEEL



BRUSHED STAINLESS
STEEL

BRASS



BRUSHED BRASS



BRUSHED ANTIQUE BRASS

POLISHED PLATED STAINLESS STEEL



COPPER



NICKEL NOIR



GOLD

MARBLES



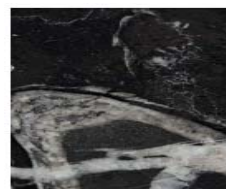
M06



M07



M08



M09



M10

MARBLE - CALCATA



TABLE OF CONTENTS

	<u>PAGE #</u>
BEDROOM	5-7
DINING TABLE	8
SIDEBOARD	9
VITRINE	9
MEDIA	10
OCCASIONAL	11-13

PRESTIGE Bed	Description		Dimensions in Inches		
	Item No.	Finish	W	H	D

FINISH SPECIFICATION:

- UPHOLSTERED HEADBOARD & BEDFRAME
- BRUSHED BRASS HEADBOARD ACCENTS
- BRUSHED BRASS PLINTH



PRESTIGE Queen Size Bed w/ Slats		80 1/8"	57"	102 3/8"
PREST-110/AB1	Grade A/B			
PREST-110/CD1	Grade C/D & COM			
PREST-110/E1	Grade E/ Mastrotto Leather/ Ultrasuede			
PREST-110/SUP1	Superior Leather Grade SUP			

C.O.M Requirement for 55"W
plain fabric is 8 3/4 yards

PRESTIGE King Size Bed w/ Slats		96"	57"	102 3/8"
PREST-111/AB1	Grade A/B			
PREST-111/CD1	Grade C/D & COM			
PREST-111/E1	Grade E/ Mastrotto Leather/ Ultrasuede			
PREST-111/SUP1	Superior Leather Grade SUP			

C.O.M Requirement for 55"W
plain fabric is 10 yards

PRESTIGE California King Size Bed w/ Slats		92 7/8"	57"	106 1/4"
PREST-112/AB1	Grade A/B			
PREST-112/CD1	Grade C/D & COM			
PREST-112/E1	Grade E/ Mastrotto Leather/ Ultrasuede			
PREST-112/SUP1	Superior Leather Grade SUP			

C.O.M Requirement for 55"W
plain fabric is 10 yards

OPTIONAL METAL FINISHES	
DEDUCT	For Polished Stainless Steel
DEDUCT	For Polished Plated Stainless Steel

PRESTIGE Bedroom	Description		Dimensions in Inches		
	Item No.	Finish	W	H	D



1 Drawer Night Stand
 Upholstered Drawer Fronts
 HG Lacquer Structure w/ Brushed Brass Accents

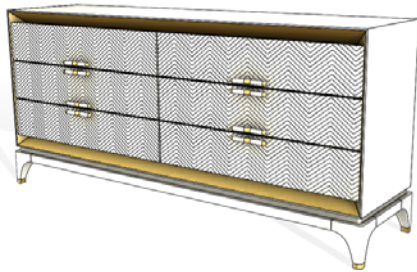
29 1/2" 21 5/8" 19 1/8"

PREST-105/AB	Grade A/B
PREST-105/CD	Grade C/D & COM
PREST-105/E	Grade E/ Mastrotto Leather/ Ultrasuede
PREST-105/SUP	Superior Leather Grade SUP

2 vol. / 0,255 m3 / 42 Kg

OPTIONAL METAL FINISHES	
DEDUCT	For Polished Stainless Steel
DEDUCT	For Polished Plated Stainless Steel

C.O.M Requirement for 55"W
 plain fabric is 1/4 yard



6 Drawer Double Dresser
 Upholstered Drawer Fronts
 HG Lacquer Structure w/ Brushed Brass Accents

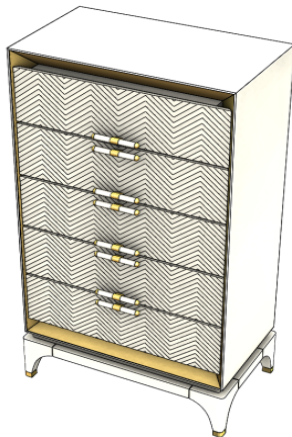
78 3/4" 39 3/8" 21 1/8"

PREST-106/AB	Grade A/B
PREST-106/CD	Grade C/D & COM
PREST-106/E	Grade E/ Mastrotto Leather/ Ultrasuede
PREST-106/SUP	Superior Leather Grade SUP

2 vol. / 1,187 m3 / 175 Kg

OPTIONAL METAL FINISHES	
DEDUCT	For Polished Stainless Steel
DEDUCT	For Polished Plated Stainless Steel

C.O.M Requirement for 55"W
 plain fabric is 2 1/2 yards



5 Drawer High Chest
 Upholstered Fronts
 HG Lacquer Structure w/ Brushed Brass Accents

31 1/2" 57" 19 1/8"

PREST-107/AB	Grade A/B
PREST-107/CD	Grade C/D & COM
PREST-107/E	Grade E/ Mastrotto Leather/ Ultrasuede
PREST-107/SUP	Superior Leather Grade SUP

OPTIONAL METAL FINISHES	
DEDUCT	For Polished Stainless Steel
DEDUCT	For Polished Plated Stainless Steel

C.O.M Requirement for 55"W
 plain fabric is 1 3/4 yards

*** RECOMMENDED THAT UNIT BE ATTACHED TO WALL ***

PRESTIGE Bedroom	Description		Dimensions in Inches		
	Item No.	Finish	W	H	D



3 vol. / 1,279 m3 / 158 Kg

Vanity Desk
 6x Drawers
 Mirror
 Upholstered Fronts
 HG Lacquer Structure w/ Brushed Brass Accents

63" 29 1/2" 20 3/4"

PREST-114/AB	Grade A/B
PREST-114/CD	Grade C/D & COM
PREST-114/E	Grade E/ Mastrotto Leather/ Ultrasuede
PREST-114/SUP	Superior Leather Grade SUP

UPCHARGE	Jewelry Box
-----------------	-------------

OPTIONAL METAL FINISHES

DEDUCT	For Polished Stainless Steel
DEDUCT	For Polished Plated Stainless Steel

C.O.M Requirement for 55"W
 plain fabric is 1 3/4 yards



1 vol. / 0,190 m3 / 56 Kg

Bedroom Bench
 Brushed Brass Accents

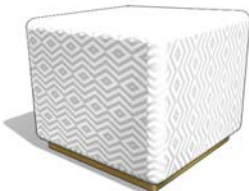
37 1/2" 25 5/8" 63"

PREST-108/AB	Grade A/B
PREST-108/CD	Grade C/D & COM
PREST-108/E	Grade E/ Mastrotto Leather/ Ultrasuede
PREST-108/SUP	Superior Leather Grade SUP

OPTIONAL METAL FINISHES

DEDUCT	For Polished Stainless Steel
DEDUCT	For Polished Plated Stainless Steel

C.O.M Requirement for 55"W
 plain fabric is 6 1/8 yards



1 vol. / 0,090 m3 / 20 Kg

Ottoman
 Brush Brass Trim

17 3/4" 17" 17 3/4"

PREST-109/AB	Grade A/B
PREST-109/CD	Grade C/D & COM
PREST-109/E	Grade E/ Mastrotto Leather/ Ultrasuede
PREST-109/SUP	Superior Leather Grade SUP

OPTIONAL METAL FINISHES

DEDUCT	For Polished Stainless Steel
DEDUCT	For Polished Plated Stainless Steel

C.O.M Requirement for 55"W
 plain fabric is 2 yards

DINING TABLE	Description		Dimensions in Inches		
	Item No.	Finish	W	H	D

PRESTIGE Oval Dining Table
 Lacquer Base w/ Brushed Brass Accents
 Upholstered Column Uprights

94 1/2" 30" 47 1/4"



C.O.M Requirement for 55"W
 plain fabric is 1 1/8 yards

4 vol. / 0.962 m3 / 330 Kg

MARBLE TOP IN CALCATA GOLD		
PREST-3002/AB	Grade A/B	
PREST-3002/CD	Grade C/D & COM	
PREST-3002/E	Grade E/ Mastrotto Leather/ Ultrasuede	
PREST-3002/SUP	Superior Leather Grade SUP	

MARBLE TOP IN STANDARD MARBLE OPTIONS		
PREST-3003/AB	Grade A/B	
PREST-3003/CD	Grade C/D & COM	
PREST-3003/E	Grade E/ Mastrotto Leather/ Ultrasuede	
PREST-3003/SUP	Superior Leather Grade SUP	

HIGH GLOSS LACQUER TOP		
PREST-3004/AB	Grade A/B	
PREST-3004/CD	Grade C/D & COM	
PREST-3004/E	Grade E/ Mastrotto Leather/ Ultrasuede	
PREST-3004/SUP	Superior Leather Grade SUP	

OPTIONAL METAL FINISHES		
DEDUCT	Stainless Steel	
DEDUCT	Polished Plated Stainless Steel	

PRESTIGE Round Dining Table
 Lacquer Base w/ Brushed Brass Accents
 Upholstered Column Uprights

70 7/8" 30" 70 7/8"



C.O.M Requirement for 55"W
 plain fabric is 3/4 yard

3 vol. / 0.891 m3 / 270 Kg

MARBLE TOP IN CALCATA GOLD		
PREST-3005/AB	Grade A/B	
PREST-3005/CD	Grade C/D & COM	
PREST-3005/E	Grade E/ Mastrotto Leather/ Ultrasuede	
PREST-3005/SUP	Superior Leather Grade SUP	

MARBLE TOP IN STANDARD MARBLE OPTIONS		
PREST-3006/AB	Grade A/B	
PREST-3006/CD	Grade C/D & COM	
PREST-3006/E	Grade E/ Mastrotto Leather/ Ultrasuede	
PREST-3006/SUP	Superior Leather Grade SUP	

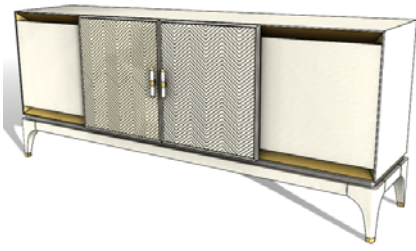
HIGH GLOSS LACQUER TOP		
PREST-3007/AB	Grade A/B	
PREST-3007/CD	Grade C/D & COM	
PREST-3007/E	Grade E/ Mastrotto Leather/ Ultrasuede	
PREST-3007/SUP	Superior Leather Grade SUP	

OPTIONAL METAL FINISHES		
DEDUCT	Stainless Steel	
DEDUCT	Polished Plated Stainless Steel	

EXTRAS		
UPCHARGE	Lazy Susan in Marble Calacata Gold (31 1/2" Diameter)	
UPCHARGE	Lazy Susan in Marble - Standard Finishes (31 1/2" Diameter)	

SIDEBORD

Description		Dimesions in Inches		
Item No.	Finish	W	H	D



PRESTIGE Sideboard
 4x Doors w/ 3x Interior Glass Shelves (grey color)
 HG Lacquer Structure/Fronts w/ Brass Accents
 Upholstered Middle Door Fronts

90 1/2" 39 3/8" 22"

PREST-3001/AB	Grade A/B
PREST-3001/CD	Grade C/D & COM
PREST-3001/E	Grade E/ Mastrotto Leather/ Ultrasuede
PREST-3001/SUP	Superior Leather Grade SUP

C.O.M Requirement for 55"W plain fabric is 2 1/4 yards

3 vol. / 1.565 m3 / 157 Kg

OPTIONAL METAL FINISHES	
DEDUCT	Stainless Steel
DEDUCT	Polished Plated Stainless Steel

VITRINE



LEFT

RIGHT

PRESTIGE Vitrine
 1x Door, 4x Interior Glass Shelves (grey color)
 Fronts in Glass / Upholstered w/ Brass Accents
 HG Lacquer Structure

29 1/2" 754 7/8" 18 3/8"

PREST-3008/AB	Grade A/B
PREST-3008/CD	Grade C/D & COM
PREST-3008/E	Grade E/ Mastrotto Leather/ Ultrasuede
PREST-3008/SUP	Superior Leather Grade SUP

OPTIONAL METAL FINISHES	
DEDUCT	Stainless Steel
DEDUCT	Polished Plated Stainless Steel

C.O.M Requirement for 55"W plain fabric is 2 yards

2 vol. / 0.793 m3 / 122 Kg

EXTRAS	
UPCHARGE	Spot LED Light

*** RECOMMENDED THAT UNIT BE ATTACHED TO WALL***

PRESTIGE Vitrine
 4x Doors, 12x Interior Glass Shelves (grey color)
 Fronts in Glass / Upholstered w/ Brass Accents
 HG Lacquer Structure

63" 74 7/8" 18 3/8"

PREST-3009/AB	Grade A/B
PREST-3009/CD	Grade C/D & COM
PREST-3009/E	Grade E/ Mastrotto Leather/ Ultrasuede
PREST-3009/SUP	Superior Leather Grade SUP

OPTIONAL METAL FINISHES	
DEDUCT	Stainless Steel
DEDUCT	Polished Plated Stainless Steel

C.O.M Requirement for 55"W plain fabric is 4 1/4 yards

4 vol. / 1.840 m3 / 232 Kg

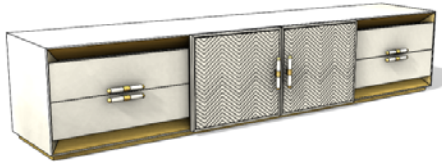
EXTRAS	
UPCHARGE	Spot LED Light

*** RECOMMENDED THAT UNIT BE ATTACHED TO WALL***

MEDIA	Description		Dimesions in Inches		
	Item No.	Finish	W	H	D

PRESTIGE Media Cabinet
 2x Upholstered Doors & 4x Drawers
 1x Interior Glass Shelf (grey color)
 HG Lacquer Structure
 Metal Accents

90 1/2" 19 5/8" 19 7/8"



2 vol. / 0.744 m3 / 155 Kg

PREST-3010/AB	Grade A/B	
PREST-3010/CD	Grade C/D & COM	
PREST-3010/E	Grade E/ Mastrotto Leather/ Ultrasuede	
PREST-3010/SUP	Superior Leather Grade SUP	

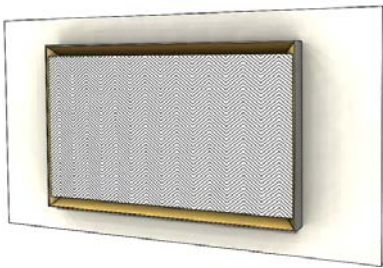
OPTIONAL METAL FINISHES

DEDUCT	Stainless Steel	
DEDUCT	Polished Plated Stainless Steel	

C.O.M Requirement for 55"W
 plain fabric is 2 yards

PRESTIGE TV Panel
 HG Lacquer Back Panel
 Upholstered Front Panel
 Metal Accents

90 1/2" 52 3/4" 8"



2 vol. / 0.860 m3 / 131 Kg
 ***MAX TV Size : 58 INCHES ***

PREST-3011/AB	Grade A/B	
PREST-3011/CD	Grade C/D & COM	
PREST-3011/E	Grade E/ Mastrotto Leather/ Ultrasuede	
PREST-3011/SUP	Superior Leather Grade SUP	

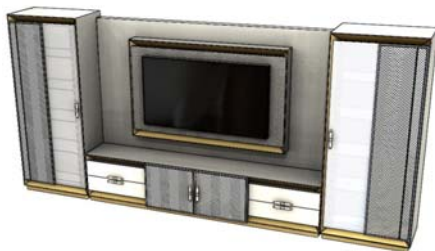
OPTIONAL METAL FINISHES

DEDUCT	Stainless Steel	
DEDUCT	Polished Plated Stainless Steel	

C.O.M Requirement for 55"W
 plain fabric is 2 yards

PRESTIGE Wall System
 Fronts in Glass / Upholstered w/ Metal Accents
 HG Lacquer Structure
 8x Interior Glass Shelves (grey color)
 4x Drawers

149 5/8" 74 7/8" 18 3/8"



8 vol. / 3.190 m3 / 530 Kg

PREST-3012/AB	Grade A/B	
PREST-3012/CD	Grade C/D & COM	
PREST-3012/E	Grade E/ Mastrotto Leather/ Ultrasuede	
PREST-3012/SUP	Superior Leather Grade SUP	

EXTRAS

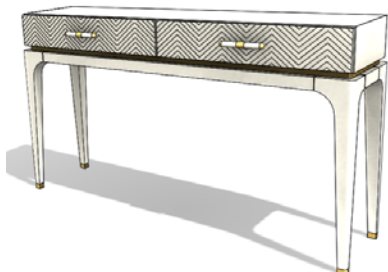
UPCHARGE	Spot LED Light	
-----------------	----------------	--

C.O.M Requirement for 55"W
 plain fabric is 6 yards

OCCASIONAL

PRESTIGE Console
 HG Lacquer Structure w/ Brass Accents
 Upholstered Drawer Fronts

59" 33 7/8" 14 7/8"



2 vol. / 0.573 m3 / 43 Kg

PREST-3013/AB	Grade A/B	
PREST-3013/CD	Grade C/D & COM	
PREST-3013/E	Grade E/ Mastrotto Leather/ Ultrasuede	
PREST-3013/SUP	Superior Leather Grade SUP	

OPTIONAL METAL FINISHES

DEDUCT	Stainless Steel	
DEDUCT	Polished Plated Stainless Steel	

C.O.M Requirement for 55"W
 plain fabric is 3/4 yard

OCCASIONAL	Description		Dimensions in Inches		
	Item No.	Finish	W	H	D



2 vol. / 0.620 m3 / 90 Kg

PRESTIGE Coffee Table
HG Lacquer Structure w/ Brass Accents

59" 15 3/4" 31 1/2"

PREST-3014/1	Calacata Gold Marble Top
PREST-3014/2	Marble Top (Standard Finishes)
PREST-3014/3	HG Lacquer Top

OPTIONAL METAL FINISHES	
DEDUCT	For Stainless Steel
DEDUCT	For Plated Stainless Steel



1 vol. / 0.332 m3 / 28 Kg

C.O.M Requirement for 55"W plain fabric is 3 yards

PRESTIGE Round End Table

HG Lacquer Top
Upholstered Structure
Brass Accents

31 1/2" 15 3/4" 31 1/2"

PREST-3018/AB	Grade A/B
PREST-3018/CD	Grade C/D & COM
PREST-3018/E	Grade E/ Mastrotto Leather/ Ultrasuede
PREST-3018/SUP	Superior Leather Grade SUP

OPTIONAL METAL FINISHES	
DEDUCT	For Stainless Steel
DEDUCT	For Plated Stainless Steel



1 vol. / 0.169 m3 / 16 Kg

C.O.M Requirement for 55"W plain fabric is 2 3/4 yards

PRESTIGE Round End Table

HG Lacquer Top
Upholstered Structure
Brass Accents

23 5/8" 11 7/8" 23 5/8"

PREST-3019/AB	Grade A/B
PREST-3019/CD	Grade C/D & COM
PREST-3019/E	Grade E/ Mastrotto Leather/ Ultrasuede
PREST-3019/SUP	Superior Leather Grade SUP

OPTIONAL METAL FINISHES	
DEDUCT	For Stainless Steel
DEDUCT	For Plated Stainless Steel



1 vol. / 0.113 m3 / 40 Kg

PRESTIGE Round End Table

HG Lacquer Structure
Brass Accents

19 5/8" 13 3/4" 19 5/8"

PREST-3020/1	Calacata Gold Marble Top
PREST-3020/2	Marble Top (Standard Finishes)
PREST-3020/3	HG Lacquer Top

OPTIONAL METAL FINISHES	
DEDUCT	For Stainless Steel
DEDUCT	For Plated Stainless Steel

OCCASIONAL	Description		Dimensions in Inches		
	Item No.	Finish	W	H	D



2 vol. / 0.272 m3 / 46 Kg

C.O.M Requirement for 55"W plain fabric is 1/2 yards

PRESTIGE Round End Table
Lacquer Base w/ Brass Accents
Upholstered Column Uprights

25 5/8" 22 1/2" 25 5/8"

MARBLE TOP IN CALCATA GOLD	
PREST-3015/AB	Grade A/B
PREST-3015/CD	Grade C/D & COM
PREST-3015/E	Grade E/ Mastrotto Leather/ Ultrasuede
PREST-3015/SUP	Superior Leather Grade SUP

MARBLE TOP (STANDARD FINISHES)	
PREST-3016/AB	Grade A/B
PREST-3016/CD	Grade C/D & COM
PREST-3016/E	Grade E/ Mastrotto Leather/ Ultrasuede
PREST-3016/SUP	Superior Leather Grade SUP

LACQUER TOP	
PREST-3017/AB	Grade A/B
PREST-3017/CD	Grade C/D & COM
PREST-3017/E	Grade E/ Mastrotto Leather/ Ultrasuede
PREST-3017/SUP	Superior Leather Grade SUP

OPTIONAL METAL FINISHES	
DEDUCT	For Stainless Steel
DEDUCT	For Plated Stainless Steel



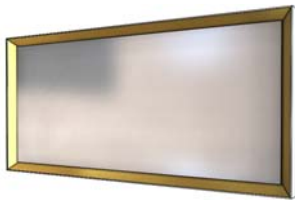
1 vol. / 0.152 m3 / 40 Kg

PRESTIGE Mirror
Metal Frame

43 3/8" 51 1/8" 3 3/4"

OPTIONAL METAL FINISHES	
PREST-3021/1	Polished Stainless Steel Detail
PREST-3021/2	Polished Plated Stainless Steel Colors
PREST-3021/3	Brushed Brass

UPCHARGE	Lighting
----------	----------



1 vol. / 0.391 m3 / 71 Kg

PRESTIGE Mirror
Metal Frame

78 3/4" 39 3/8" 3 3/4"

OPTIONAL METAL FINISHES	
PREST-3023/1	Polished Stainless Steel Detail
PREST-3023/2	Polished Plated Stainless Steel Colors
PREST-3023/3	Brushed Brass

UPCHARGE	Lighting
----------	----------

OCCASIONAL	Description		Dimesions in Inches		
	Item No.	Finish	W	H	D



1 vol. / 0.391 m3 / 71 Kg

PRESTIGE Floor Mirror		39 3/8"	78 3/4"	3 3/4"
OPTIONAL METAL FINISHES				
PREST-3024/1	Polished Stainless Steel Detail			
PREST-3024/2	Polished Plated Stainless Steel Colors			
PREST-3024/3	Brushed Brass			
UPCHARGE	Lighting			

*****IT IS THE RESPONSIBILITY OF THE CUSTOMER TO ENSURE THAT THE CORRECT HARDWARE IS USED WHEN HANGING MIRRORS;
MANUFACTURER CANNOT SUPPLY HARDWARE FOR EVERY TYPE OF SITUATION.*****