

# SERENITY COLLECTION

by ALEAL



Retail Price List

January 1, 2021

Revised 03.04.2021

**PLANUM**<sup>®</sup>  
FURNITURE

Planum, Inc  
Swedesford Corporate Center  
619 B Swedesford Road  
Frazer, PA 19355

email [info@planumfurniture.com](mailto:info@planumfurniture.com)  
visit us [planumfurniture.com](http://planumfurniture.com)

Tel : 610/251-2120

Tel : 800/343-0042

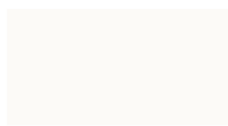
Fax : 610/251-2290

# ALEAL Finishes

## LACQUER FINISHES



LC01 BLACK



LC02 WHITE



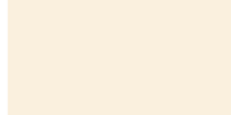
LC07 BRICK RED



LC11 TOMATO RED



LC12 SLATE GRAY



LC13 IVORY



LC14 METALLIC GRAY



LC15 GRAY BEIGE



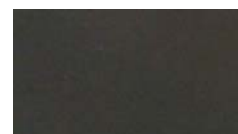
LC16 FOG GRAY



LC18 METALLIC TAUPE



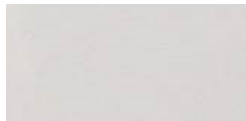
LC19 CAMOUFLAGE



LC20 GUN METAL GRAY



LC21 MUSTARD YELLOW



LC22 ASH GRAY



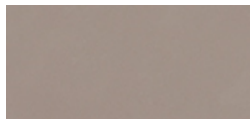
LC23 SILVER GRAY



LC26 BURGANDY



LC27 RUBY



LC28 CAPPUCCINO



LC36 PEARL



LC37 PEWTER



LC38 PALOMINO



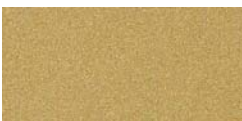
CHAMPAGNE



BRONZE



SILVER



GOLD

### Please Note:

- 1.) Custom RAL colors are acceptable, please add 10% upcharge (or minimum charge of \$260)
- 2.) Custom RAL colors need 60-120 day order delay.
- 3.) Is it the customers responsibility to send the sample of the desired color to Planum.
- 4.) Lastly all orders with custom colors will not be accepted as a return.

# ALEAL Finishes

OAK & WALNUT FINISHES (Always 5% Sheen - Matte)



CV01 Black Oak



CV09 Gray Beige Oak



CV02 Chocolate Oak



CV12 Ivory Oak



CV03 Slate Gray Oak



CV04 White Oak



CV11 Metallic Taupe Oak



CV05 Cherry Oak



CV10 Metallic Gray Oak



CV06 Natural Oak



CVL15 Opal Gray Oak



CVL14 Steel Gray Oak



CVL16 Smooth Chocolate Oak



Wild Oak



CVL17 Rustic Oak



NG01 Walnut

# ALEAL Finishes

## EBONY



RECONSTITUTED EBONY

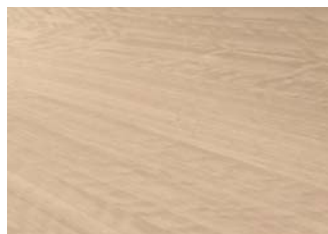


NATURAL EBONY

## EUCALYPTUS FRISE



GREY EUCALYPTUS

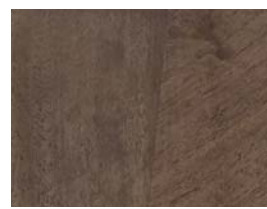


POLAR EUCALYPTUS



ESPRESSO EUCALYPTUS

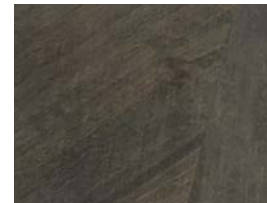
## PLAIN STAINED EUCALYPTUS



SOFT PLUM



NATURAL



SOFT GREY

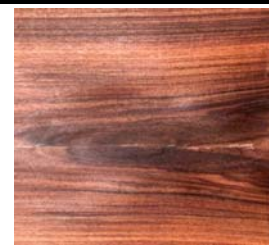


SOFT BROWN

## ROSEWOOD



RECONSTITUTED ROSEWOOD



NATURAL ROSEWOOD

## TULP WOOD

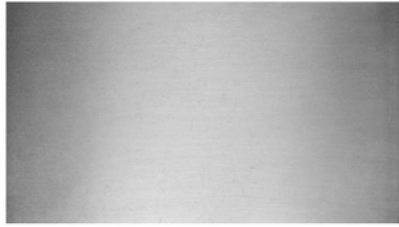


## OAK FUME

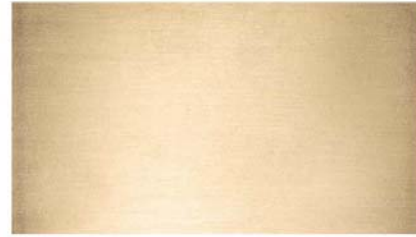


# ALEAL Finishes

## METAL FINISHES



**POLISHED STAINLESS STEEL**



**BRUSHED BRASS**

## Polished Painted Stainless Steel Options



**COPPER**



**NICKEL NOIR**



**GOLD**

## Marble



**M06**



**M07**



**M08**



**M09**



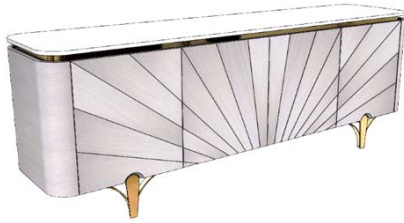
**M10**

# TABLE OF CONTENTS

	<u>PAGE #</u>
DINING ROOM	7-8
BAR	8
MEDIA CABINETS	9
OCCASIONAL	9-10

# Dining

Description		Dimensions in Inches		
Item No.	Finish	W	H	D

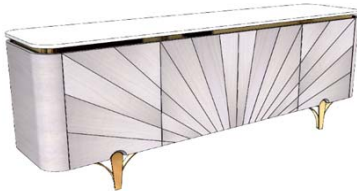


<b>SERENITY Sideboard</b>				
4x Doors				
1x Upholstered Interior Drawer & 2x Wood Shelves				
Top & Structure in Wood, Interior in Lacquer				
Stainless Steel Accents		94 1/2"	35 1/2"	21 5/8"

<b>SERE-100/1</b>	Oak or Walnut (5% or 30% Sheen)
<b>SERE-100/2</b>	Natural Ebony
<b>SERE-100/3</b>	Reconstituted Ebony, Oak Fume or Reconstituted Rosewood
<b>SERE-100/4</b>	Eucalyptus Frise, Tulip or Natural Rosewood
<b>SERE-100/5</b>	Eucalyptus Stain
<b>SERE-100/6</b>	All Lacquer

<b>OPTIONAL METAL FINISHES:</b>	
<b>UPCHARGE</b>	Polished Painted Stainless Steel
<b>UPCHARGE</b>	Brushed Brass

<b>EXTRAS:</b>	
<b>UPCHARGE</b>	Marble Top
<b>UPCHARGE</b>	Cutlery Insert

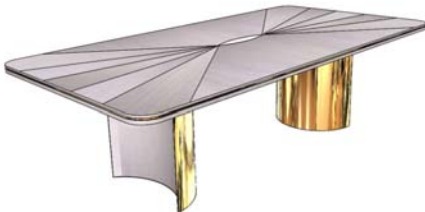


<b>SERENITY Sideboard</b>				
4x Doors				
1x Upholstered Interior Drawer & 2x Wood Shelves				
Top & Structure in Wood, Interior in Lacquer				
Stainless Steel Accents		86 5/8"	35 1/2"	21 5/8"

<b>SERE-101/1</b>	Oak or Walnut (5% or 30% Sheen)
<b>SERE-101/2</b>	Natural Ebony
<b>SERE-101/3</b>	Reconstituted Ebony, Oak Fume or Reconstituted Rosewood
<b>SERE-101/4</b>	Eucalyptus Frise, Tulip or Natural Rosewood
<b>SERE-101/5</b>	Eucalyptus Stain
<b>SERE-101/6</b>	All Lacquer

<b>OPTIONAL METAL FINISHES:</b>	
<b>UPCHARGE</b>	Polished Painted Stainless Steel
<b>UPCHARGE</b>	Brushed Brass

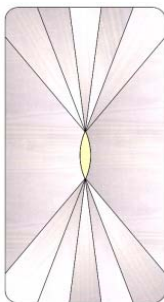
<b>EXTRAS:</b>	
<b>UPCHARGE</b>	Marble Top
<b>UPCHARGE</b>	Cutlery Insert



<b>SERENITY Rectangular Dining Table</b>				
Wood Top & Interior Column				
Stainless Steel Accent & Outside Column				
		94 1/2"	30"	47 1/4"

<b>SERE-102/1</b>	Oak or Walnut (5% or 30% Sheen)
<b>SERE-102/2</b>	Natural Ebony
<b>SERE-102/3</b>	Reconstituted Ebony, Oak Fume or Reconstituted Rosewood
<b>SERE-102/4</b>	Eucalyptus Frise, Tulip or Natural Rosewood
<b>SERE-102/5</b>	Eucalyptus Stain
<b>SERE-102/6</b>	All Lacquer

		86 5/8"	30"	39 3/8"



<b>SERE-103/1</b>	Oak or Walnut (5% or 30% Sheen)
<b>SERE-103/2</b>	Natural Ebony
<b>SERE-103/3</b>	Reconstituted Ebony, Oak Fume or Reconstituted Rosewood
<b>SERE-103/4</b>	Eucalyptus Frise, Tulip or Natural Rosewood
<b>SERE-103/5</b>	Eucalyptus Stain
<b>SERE-103/6</b>	All Lacquer

<b>OPTIONAL METAL FINISHES:</b>	
<b>UPCHARGE</b>	Polished Painted Stainless Steel
<b>UPCHARGE</b>	Brushed Brass

## Dining

Description		Dimensions in Inches		
Item No.	Finish	W	H	D
<b>SERENITY Rectangular Ext. Dining Table w/ Portobello Top</b>				
Wood Top & Interior Column				
Stainless Steel Outside Column				
		94 1/2"	30"	47 1/4"
2x 17 3/4" Center Extensions				
<b>SERE-104/1</b>	Oak or Walnut (5% or 30% Sheen)			
<b>SERE-104/2</b>	Natural Ebony			
<b>SERE-104/3</b>	Reconstituted Ebony, Oak Fume or Reconstituted Rosewood			
<b>SERE-104/4</b>	Eucalyptus Frise, Tulip or Natural Rosewood			
<b>SERE-104/5</b>	Eucalyptus Stain			
<b>SERE-104/6</b>	All Lacquer			
		86 5/8"	30"	39 3/8"
2x 17 3/4" Center Extensions				
<b>SERE-105/1</b>	Oak or Walnut (5% or 30% Sheen)			
<b>SERE-105/2</b>	Natural Ebony			
<b>SERE-105/3</b>	Reconstituted Ebony, Oak Fume or Reconstituted Rosewood			
<b>SERE-105/4</b>	Eucalyptus Frise, Tulip or Natural Rosewood			
<b>SERE-105/5</b>	Eucalyptus Stain			
<b>SERE-105/6</b>	All Lacquer			
<b>OPTIONAL METAL FINISHES:</b>				
<b>UPCHARGE</b>	Polished Painted Stainless Steel			
<b>UPCHARGE</b>	Brushed Brass			



## Bar

<b>SERENITY Bar</b>				
2x Doors				
3x Interior Wood Shelves				
Top & Structure in Wood, Interior in Lacquer				
Stainless Steel Accents				
		47 1/4"	59"	21 5/8"
<b>SERE-111/1</b>	Oak or Walnut (5% or 30% Sheen)			
<b>SERE-111/2</b>	Natural Ebony			
<b>SERE-111/3</b>	Reconstituted Ebony, Oak Fume or Reconstituted Rosewood			
<b>SERE-111/4</b>	Eucalyptus Frise, Tulip or Natural Rosewood			
<b>SERE-111/5</b>	Eucalyptus Stain			
<b>SERE-111/6</b>	All Lacquer			
<b>OPTIONAL METAL FINISHES:</b>				
<b>UPCHARGE</b>	Polished Painted Stainless Steel			
<b>UPCHARGE</b>	Brushed Brass			
<b>UPCHARGE</b>	LED Lighting (2x Spot Lights)			



\*\*\* RECOMMENDED THAT UNIT BE ATTACHED TO WALL\*\*\*



## Media Cabinet

### Description

### Dimensions in Inches

Item No.	Finish	W	H	D
<b>SERENITY Media Cabinet</b>				
4x Doors				
3x Interior Wood Shelves				
Top & Structure in Wood, Interior in Lacquer				
Stainless Steel Accents				
		94 1/2"	23 5/8"	21 5/8"



<b>SERE-114/1</b>	Oak or Walnut (5% or 30% Sheen)
<b>SERE-114/2</b>	Natural Ebony
<b>SERE-114/3</b>	Reconstituted Ebony, Oak Fume or Reconstituted Rosewood
<b>SERE-114/4</b>	Eucalyptus Frise, Tulip or Natural Rosewood
<b>SERE-114/5</b>	Eucalyptus Stain
<b>SERE-114/6</b>	All Lacquer

#### OPTIONAL METAL FINISHES:

<b>UPCHARGE</b>	Polished Painted Stainless Steel
<b>UPCHARGE</b>	Brushed Brass

#### EXTRAS:

<b>UPCHARGE</b>	Marble Top
<b>UPCHARGE</b>	IR Repeater

<b>SERENITY Media Cabinet</b>				
4x Doors				
3x Interior Wood Shelves				
Top & Structure in Wood, Interior in Lacquer				
Stainless Steel Accents				
		86 5/8"	23 5/8"	21 5/8"



<b>SERE-115/1</b>	Oak or Walnut (5% or 30% Sheen)
<b>SERE-115/2</b>	Natural Ebony
<b>SERE-115/3</b>	Reconstituted Ebony, Oak Fume or Reconstituted Rosewood
<b>SERE-115/4</b>	Eucalyptus Frise, Tulip or Natural Rosewood
<b>SERE-115/5</b>	Eucalyptus Stain
<b>SERE-115/6</b>	All Lacquer

#### OPTIONAL METAL FINISHES:

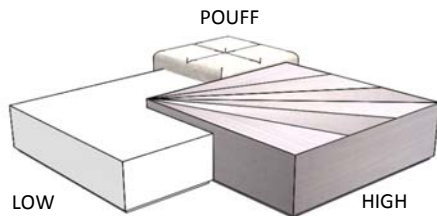
<b>UPCHARGE</b>	Polished Painted Stainless Steel
<b>UPCHARGE</b>	Brushed Brass

#### EXTRAS:

<b>UPCHARGE</b>	Marble Top
<b>UPCHARGE</b>	IR Repeater

## Occasional

<b>SERENITY Nest of Tables</b>				
Low Table in Lacquer (Optional Colors)				
		59"	12 5/8"	59"
High Table in Wood				
		63"	14 1/2"	63"
(Pouff Priced Separately)				



<b>SERE-125/1</b>	Oak or Walnut (5% or 30% Sheen)
<b>SERE-125/2</b>	Natural Ebony
<b>SERE-125/3</b>	Reconstituted Ebony, Oak Fume or Reconstituted Rosewood
<b>SERE-125/4</b>	Eucalyptus Frise, Tulip or Natural Rosewood
<b>SERE-125/5</b>	Eucalyptus Stain
<b>SERE-125/6</b>	All Lacquer

<b>SERENITY Upholstered Pouff for Nest of Tables</b>				
		23 5/8"	14 1/2"	23 5/8"

<b>SERE-116/AB</b>	Faux Leather & Fabric Grade A/B
<b>SERE-116/CD</b>	Fabric Grade C/D & COM
<b>SERE-116/E</b>	Grade E/ Mastrotto Leather/ Ultrasuede
<b>SERE-116/SUP</b>	Superior Leather Grade SUP

**Occasional**

**Description**

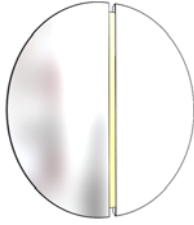
**Dimensions in Inches**

Item No.      Finish

**W**

**H**

**D**



**CARLTON Mirror Lrg**

57"

55 1/8"

1 1/4"

<b>SERE-117/1</b>	Lacquer Structure w/ Stainless Steel Accent
-------------------	---

**OPTIONAL METAL FINISHES:**

<b>UPCHARGE</b>	Polished Painted Stainless Steel
-----------------	----------------------------------

<b>UPCHARGE</b>	Brushed Brass
-----------------	---------------



**CARLTON Mirror Sml**

45 1/4"

43 3/8"

1 1/4"

<b>SERE-118/1</b>	Lacquer Structure w/ Stainless Steel Accent
-------------------	---

**OPTIONAL METAL FINISHES:**

<b>UPCHARGE</b>	Polished Painted Stainless Steel
-----------------	----------------------------------

<b>UPCHARGE</b>	Brushed Brass
-----------------	---------------

**PLEASE NOTE:** It is the responsibility of the customer to ensure that the correct hardware is used when hanging the mirror/wall modules; manufacturer cannot supply hardware for every type of situation.