

# SLIDING COLLECTION

by ALEAL



**PLANUM**<sup>®</sup>  
FURNITURE

Planum, Inc  
Swedesford Corporate Center  
619 B Swedesford Road  
Frazer, PA 19355

Tel : 610/251-2120  
Tel : 800/343-0042  
Fax : 610/251-2290

email [info@planumfurniture.com](mailto:info@planumfurniture.com)  
visit us [planumfurniture.com](http://planumfurniture.com)

# ALEAL Finishes

## LACQUER FINISHES



LC01 BLACK



LC02 WHITE



LC07 BRICK RED



LC11 TOMATO RED



LC12 SLATE GRAY



LC13 IVORY



LC14 METALLIC GRAY



LC15 GRAY BEIGE



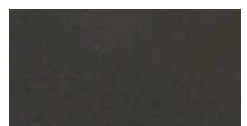
LC16 FOG GRAY



LC18 METALLIC TAUPE



LC19 CAMOUFLAGE



LC20 GUN METAL GRAY



LC21 MUSTARD YELLOW



LC22 ASH GRAY



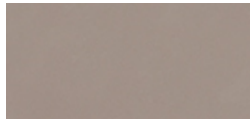
LC23 SILVER GRAY



LC26 BURGANDY



LC27 RUBY



LC28 CAPPUCCINO



LC36 PEARL



LC37 PEWTER



LC38 PALOMINO



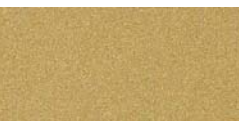
CHAMPAGNE



BRONZE



SILVER



GOLD

### Please Note:

- 1.) Custom RAL colors are acceptable, please add 10% upcharge (or minimum charge of \$260)
- 2.) Custom RAL colors need 60-120 day order delay.
- 3.) Is it the customers responsibility to send the sample of the desired color to Planum.
- 4.) Lastly all orders with custom colors will not be accepted as a return.

# ALEAL Finishes

OAK & WALNUT FINISHES ( ALWAYS 5% SHEEN)



CV01 Black Oak



CV09 Gray Beige Oak



CV02 Chocolate Oak



CV12 Ivory Oak



CV03 Slate Gray Oak



CV04 White Oak



CV11 Metallic Taupe Oak



CV05 Cherry Oak



CV10 Metallic Gray Oak



CV06 Natural Oak



CVL15 Opal Gray Oak



CVL14 Steel Gray Oak



CVL16 Smooth Chocolate Oak



Wild Oak



CVL17 Rustic Oak



NG01 Walnut

\*\*\*Please Note: Any OAK finish can be replaced with WALNUT with a 10% upcharge\*\*\*

# ALEAL Finishes

## CERAMIC FINISHES



ARENA



ARTIC WHITE



AVORIO



BARRO



BASALT BEIGE



BASALT BLACK



BELGIAN BLUE



BASALT GREY



CEMENT



IRON COPPER



IRON CORTEN



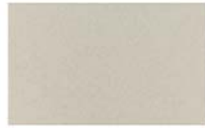
IRON GREY



IRON MOSS



LAVA



PERLA

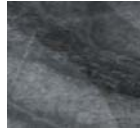
## CERAMIC FINISHES (MARBLE IMITATIONS w/ GLOSS FINISH)



SILK GRISS



CARRARA  
POLIDO



MEDUSA



ESTUARIO  
POLIDO



CALCATA



SILK GRIS  
NATURAL



ONICE BEJE (MATTE FINISH)

\*\*\*Please Note: The above ceramic finishes cannot be applied to Extension tables -- they are too thick (5.6 MM)\*\*

## CERAMIC FINISHES (MARBLE IMITATIONS w/ MATTE FINISH)



THUNDER  
LIGHT



CALCATA MIX



ESTUARIO



CARRARA  
NATURAL



TEMPO



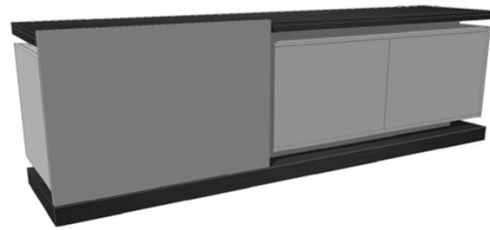
SUPREME  
NATURAL

\*\*\*Please Note: Ceramic finishes can only be applied to certain pieces -- check price list\*\*\*

# TABLE OF CONTENTS

	<u>PAGE #</u>
DINING ROOM	6
VITRINES	6 - 7
BAR UNIT	7
MEDIA CABINETS	8-9
PRE-DESIGNED CONFIGURATION	9-11
WALL MOUNTED UNITS	11-12
OCCASIONAL	12

## Dining



2 vol. / 1,229 m3 / 162 Kg



2 vol. / 1,033 m3 / 136 Kg



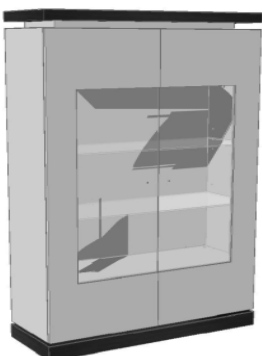
2 vol. / 0,338 m3 / 85 Kg



2 vol. / 0,350 m3 / 85 Kg

Description		Dimensions in Inches		
Item No.	Finish	W	H	D
<b>SLIDING Sideboard (Big Version)</b> 2x Doors 2x Lacquer Shelves 1x Tempered Glass Shelf		94 1/2"	31"	21 5/8"
<b>SLIDIN-800</b>	Oak Top & Plinth w/ Matte Lacquer Body and HG Lacquer Fronts			
<b>UPCHARGE</b>	Cutlery Insert			
<b>UPCHARGE</b>	LED Lights			
<b>SLIDING Sideboard (Small Version)</b> 2x Doors 2x Lacquer Shelves 1x Tempered Glass Shelf		78 3/4"	31"	21 5/8"
<b>SLIDIN-815</b>	Oak Top & Plinth w/ Matte Lacquer Body and HG Lacquer Fronts			
<b>UPCHARGE</b>	Cutlery Insert			
<b>UPCHARGE</b>	LED Lights			
<b>SLIDING Rectangular Extension Dining Table</b> w/ 2x 21 5/8" Extension Leaves		74 7/8"	30 3/4"	39 3/8"
<b>SLIDIN-802/1</b>	All Oak			
<b>SLIDIN-802/2</b>	HG Lacquer Top w/ Oak Extensions & Feet			
<b>SLIDIN-802/3</b>	Glass Top w/ Oak Extensions & Feet			
<b>SLIDIN-802/4</b>	Ceramic Top w/ Oak Extensions & Feet			
**Available at 63" wide w/ 2x 15 3/4" Extensions-- Same price as above**				
<b>SLIDING Square Extension Dining Table</b> w/ 1x 25 5/8" Extension Leafs		55 1/8"	30 3/4"	55 1/8"
<b>SLIDIN-804/1</b>	All Oak			
<b>SLIDIN-804/2</b>	HG Lacquer Top w/ Oak Extensions & Feet			
<b>SLIDIN-804/3</b>	Glass Top w/ Oak Extensions & Feet			
<b>SLIDIN-804/4</b>	Ceramic Top w/ Oak Extensions & Feet			

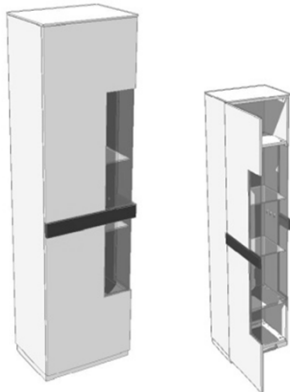
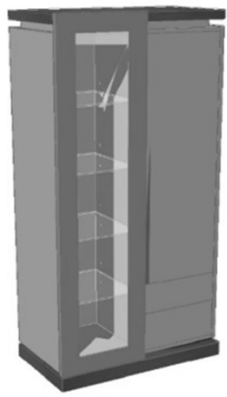
## Vitrine



2 vol. / 1.094 m3 / 139 kg

<b>SLIDING Vitrine</b> 2x LED Projectors w/ Mirrored Back w/ Tempered Glass Shelf		47 1/4"	74 7/8"	17 3/8"
<b>SLIDIN-816</b>	Oak Top & Plinth w/ Matte Lacquer Body and HG Lacquer Fronts			
<b>UPCHARGE</b>	LED Lights (for the Top)			

## Vitrine



2 vol. / 0,637 m3 / 75 Kg

Description		Dimensions in Inches		
Item No.	Finish	W	H	D
<b>SLIDING B Vitrine</b> 1x Sliding Glass Door 2x Drawers 4x Glass Shelves w/ Interior Light		39 3/8"	82 5/8"	21 5/8"
<b>SLIDIN-820</b>	Oak Top & Plinth w/ Matte Lacquer Body and HG Lacquer Fronts			
<b>UPCHARGE</b>	LED Lights (for the Top)			
<b>STRIPES 1 Door Vitrine w/out Stripes</b> w/ Interior Light w/ Tempered Glass Shelf		23 5/8"	80 3/8"	17 3/4"
<b>STRIPE-728</b>	Matte Lacquer Body w/ HG Lacquer Fronts			

\*\*Mirror image available upon request\*\*

## Bar Unit



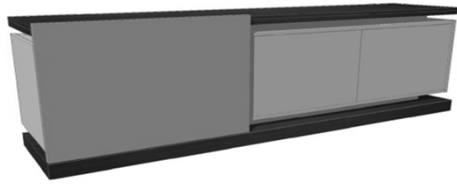
2 vol. / 0,957 m3 / 140 Kg



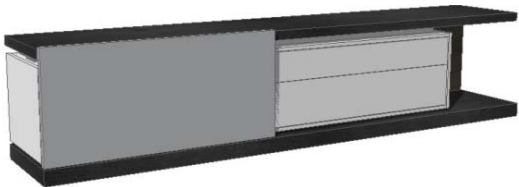
<b>SLIDING Bar Unit</b> w/ Mirrored Back w/ Interior Light w/ Glass Shelf		47 1/4"	57"	21 5/8"
<b>SLIDIN-801</b>	Oak Top & Plinth w/ Matte Lacquer Body and HG Lacquer Fronts			
<b>UPCHARGE</b>	LED Lights (for the Top)			
<b>SLIDING Bar Unit w/ Glass Door</b> w/ Mirrored Back w/ Interior Light w/ Glass Shelf w/ 1x Drawer w/ Sliding Glass Door		47 1/4"	57"	21 5/8"
<b>SLIDIN-819</b>	Oak Top & Plinth w/ Matte Lacquer Body and HG Lacquer Fronts			
<b>UPCHARGE</b>	LED Lights (for the Top)			

# Media Cabinets

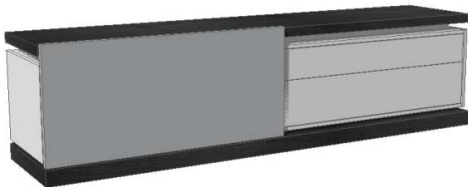
Description	Dimensions in Inches				
	Item No.	Finish	W	H	D
<b>SLIDING Media Cabinet (Big Version)</b> 2x Doors 2x Lacquer Shelves 1x Drawer			94 1/2"	22 7/8"	21 5/8"
<b>SLIDIN-817</b>	Oak Top & Plinth w/ Matte Lacquer Body and HG Lacquer Fronts				
<b>UPCHARGE</b>	LED Lights				
<b>SLIDING Media Cabinet (Small Version)</b> 2x Doors 2x Lacquer Shelves 1x Drawer			78 3/4"	22 7/8"	21 5/8"
<b>SLIDIN-818</b>	Oak Top & Plinth w/ Matte Lacquer Body and HG Lacquer Fronts				
<b>UPCHARGE</b>	LED Lights				
<b>SLIDING TV Unit</b> 2x Drawers 1x Tempered Glass Shelf			114 1/4"	25 3/4"	21 5/8"
<b>SLIDIN-827</b>	Oak Top & Plinth w/ Matte Lacquer Body and HG Lacquer Fronts				
<b>UPCHARGE</b>	LED Lights				
<b>SLIDING TV Unit</b> 2x Drawers 1x Tempered Glass Shelf			94 1/2"	25 3/4"	21 5/8"
<b>SLIDIN-826</b>	Oak Top & Plinth w/ Matte Lacquer Body and HG Lacquer Fronts				
<b>UPCHARGE</b>	LED Lights				
			78 3/4"	25 3/4"	21 5/8"
<b>SLIDIN-828</b>	Oak Top & Plinth w/ Matte Lacquer Body and HG Lacquer Fronts				
<b>UPCHARGE</b>	LED Lights				
			63"	25 3/4"	21 5/8"
<b>SLIDIN-829</b>	Oak Top & Plinth w/ Matte Lacquer Body and HG Lacquer Fronts				
<b>UPCHARGE</b>	LED Lights				
<b>SLIDING TV Unit (Big Version)</b> 2x Drawers 1x Tempered Glass Shelf			94 1/2"	18 7/8"	21 5/8"
<b>SLIDIN-807</b>	Oak Top & Plinth w/ Matte Lacquer Body and HG Lacquer Fronts				
<b>UPCHARGE</b>	LED Lights				
<b>SLIDING TV Unit (Small Version)</b> 1x Drawer 1x Tempered Glass Shelf			63"	18 7/8"	21 5/8"
<b>SLIDIN-806</b>	Oak Top & Plinth w/ Matte Lacquer Body and HG Lacquer Fronts				
<b>UPCHARGE</b>	LED Lights				



2 vol. / 1,229 m3 / 162 Kg  
 2 vol. / 1,033 m3 / 136 Kg



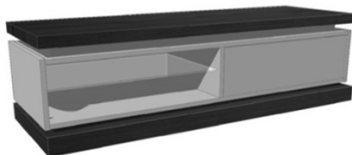
3 vol. / 1.211 m3 / 164 kg



3 vol. / 1.200 m3 / 158 kg



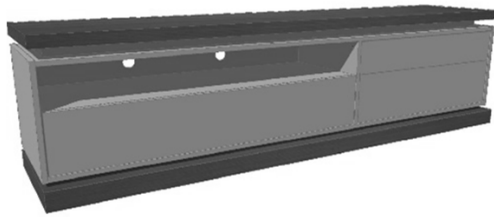
1 vol. / 0,730 m3 / 85 Kg



1 vol. / 0,533m3 / 93 Kg

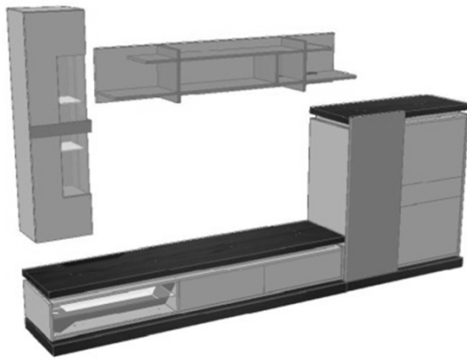


## Media Cabinets

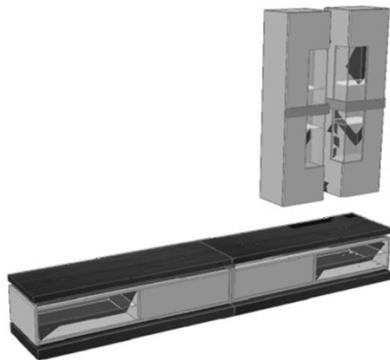


Description		Dimensions in Inches		
Item No.	Finish	W	H	D
<b>SLIDING G TV Unit</b> 3x Drawers		94 1/2"	25 3/8"	21 5/8"
<b>SLIDIN-821</b>	Oak Top & Plinth w/ Matte Lacquer Body and HG Lacquer Fronts			
<b>UPCHARGE</b>	LED Lights			

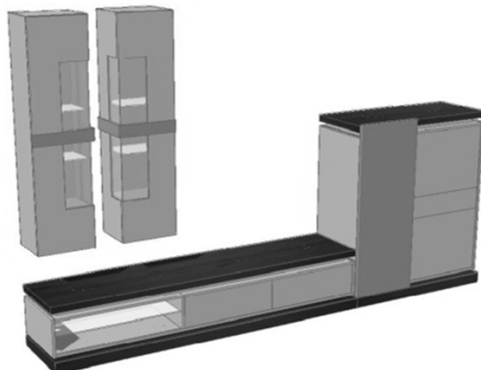
## Pre-Designed Compositions



<b>SLIDING A Composition Includes:</b> SLIDING TV Unit 94 1/2" W (SLIDIN-807) SLIDING Bar Unit 57" H (SLIDIN-801) STRIPE Wall Vitrine Module 63" H (STRIPE-721) STRIPE Shelves Module 78 3/4" W (STRIPE-720)		141 3/4"	93 3/8"	21 5/8"
<b>SLIDIN-808</b>	Combination of Lacquer & Oak			
<b>UPCHARGE</b>	LED Lights			



<b>SLIDING B Composition Includes:</b> SLIDING TV Unit 63" W (SLIDIN-806) SLIDING TV Unit 63" W (SLIDIN-806) STRIPE Wall Vitrine Module 63" H (STRIPE-721) STRIPE Wall Vitrine Module 63" H (STRIPE-721)		126"	93 3/8"	21 5/8"
<b>SLIDIN-809</b>	Combination of Lacquer & Oak			
<b>UPCHARGE</b>	LED Lights			



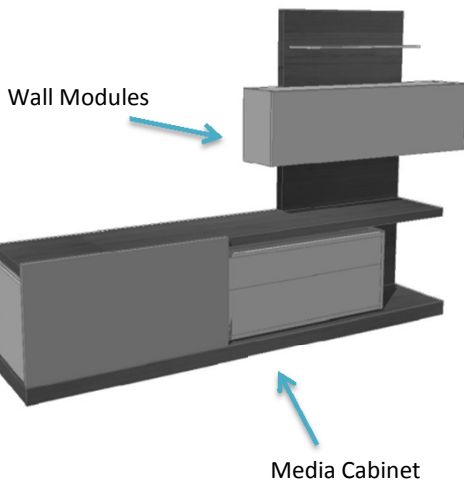
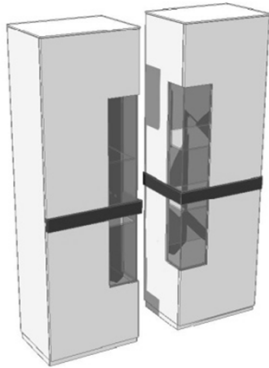
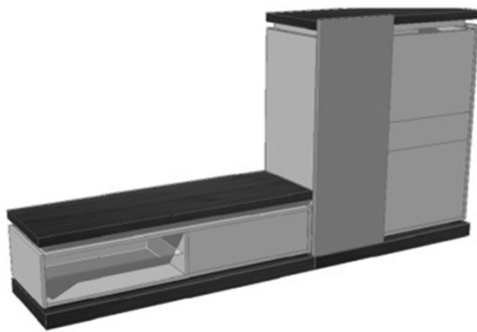
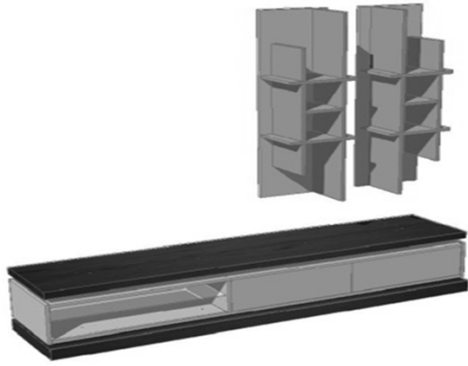
<b>SLIDING C Composition Includes:</b> STRIPE Wall Vitrine Module 63" H (STRIPE-721) STRIPE Wall Vitrine Module 63" H (STRIPE-721) SLIDING TV Unit 94 1/2" W (SLIDIN-807) SLIDING Bar Unit 57" H (SLIDIN-801)		141 3/4"	93 3/8"	21 5/8"
<b>SLIDIN-810</b>	Combination of Lacquer & Oak			
<b>UPCHARGE</b>	LED Lights			

# Pre-Designed Compositions

## Description

## Dimensions in Inches

Item No.	Finish	W	H	D
<b>SLIDING D Composition Includes:</b> STRIPES Shelves Module 55 1/8" W (STRIPE-719) STRIPES Shelves Module 55 1/8" W (STRIPE-719) SLIDING TV Unit 94 1/2" W (SLIDIN-807)				
		94 1/2"	85 1/2"	21 5/8"
<b>SLIDIN-811</b>	Combination of Lacquer & Oak			
<b>UPCHARGE</b>	LED Lights			
<b>SLIDING E Composition Includes:</b> SLIDING TV Unit 63" W (SLIDIN-806) SLIDING Bar Unit 57" H (SLIDIN-801)				
		110 1/4"	57"	21 5/8"
<b>SLIDIN-812</b>	Combination of Lacquer & Oak			
<b>UPCHARGE</b>	LED Lights			
<b>STRIPES E Composition Includes:</b> 2x STRIPES 1 Door Vitrine (STRIPE-728)				
		59"	80 3/8"	17 3/4"
<b>STRIPE-734</b>	Combination of Lacquer & Oak			
<b>SLIDING F Composition Includes:</b> w/ Drop-Lid Wall Module TV Unit w/ Sliding Door & 2x Drawers 1x Tempered Glass Shelf				
		126"	70 7/8"	21 5/8"
<b>SLIDIN-823</b>	Complete Composition- Combination of Lacquer & Oak			
<b>UPCHARGE</b>	LED Lights			
		63"	45 1/2"	13"
<b>SLIDIN-823/W</b>	Wall Modules Only - Combination of Lacquer & Oak			
		114 1/4"	25 3/4"	21 5/8"
<b>SLIDIN-823/MC</b>	Media Cabinet Only - Combination of Lacquer & Oak			

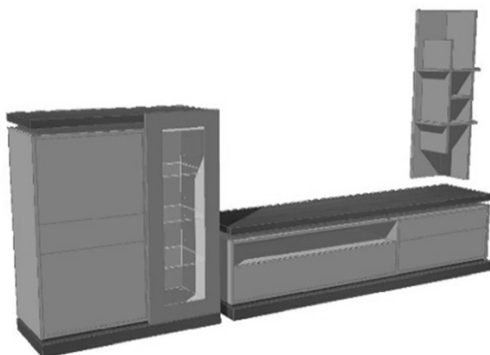


## Pre-Designed Compositions

### Description

### Dimensions in Inches

Item No.	Finish	W	H	D
----------	--------	---	---	---



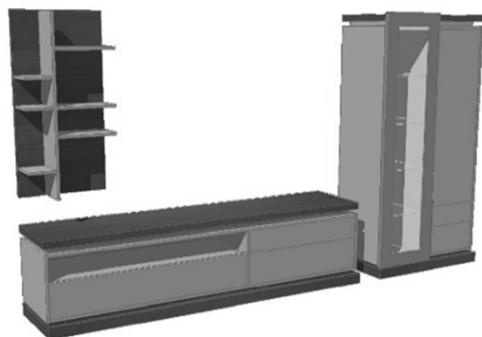
**SLIDING G Composition Includes:**  
 SLIDING Bar Unit 63" H (SLIDIN-819)  
 SLIDING G TV Unit 94 1/2" W (SLIDIN-821)  
 STRIPES Shelves Module 55 1/8" W (STRIPE-719)  
 145 5/8"

84 1/2"

21 5/8"

<b>SLIDIN-824</b>	Combination of Lacquer & Oak
-------------------	------------------------------

<b>UPCHARGE</b>	LED Lights
-----------------	------------



**SLIDING H Composition Includes:**  
 SLIDING G TV Unit 94 1/2" W (SLIDIN-821)  
 SLIDING B Vitrine 82 5/8" H (SLIDIN-820)  
 SLIDING Shelf Module 23 5/8"W (SLIDING-822)  
 141 3/4"

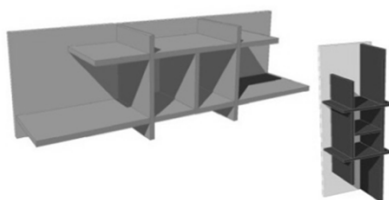
82 5/8"

21 5/8"

<b>SLIDIN-825</b>	Combination of Lacquer & Oak
-------------------	------------------------------

<b>UPCHARGE</b>	LED Lights
-----------------	------------

## Wall Mounted Modules



1 vol. / 0,220 m3 / 28 Kg

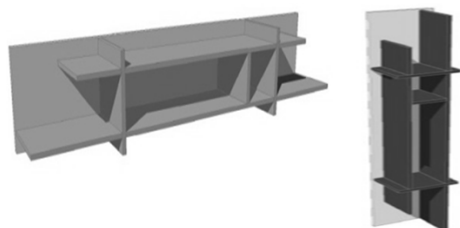
### STRIPES Shelves Module

55 1/8"

15 3/4"

13"

<b>STRIPE-719</b>	HG Lacquer Shelves w/ Matte Lacquer Back
-------------------	--



1 vol. / 0,319 m3 / 39 Kg

### STRIPES Shelves Module

78 3/4"

15 3/4"

13"

<b>STRIPE-720</b>	HG Lacquer Shelves w/ Matte Lacquer Back
-------------------	--

**PLEASE NOTE:** It is the responsibility of the customer to ensure that the correct hardware is used when hanging the mirror/wall n manufacturer cannot supply hardware for every type of situation.

## Wall Mounted Modules

### Description

### Dimensions in Inches

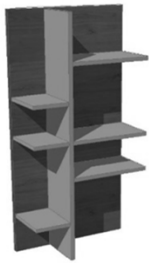
Item No.

Finish

W

H

D



**SLIDING Shelf Module**

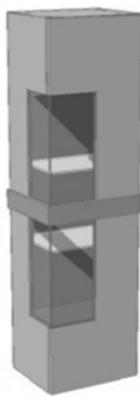
23 5/8"

49 5/8"

10 3/8"

**SLIDIN-822**

HG Lacquer Shelves w/ Oak Back



**STRIPES Wall Vitrine**

w/ Interior Light

w/ Tempered glass shelves

15 3/4"

63"

13"

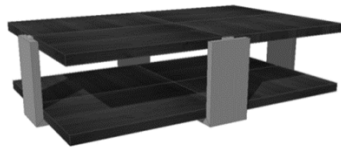
**STRIPE-721**

Matte Laquer Body w/ HG Lacquer Door & Handle

\*\*Mirror image available upon request\*\*

2 vol. / 0,296 m3 / 44 Kg

## Occasional



**SLIDING Coffee Table**

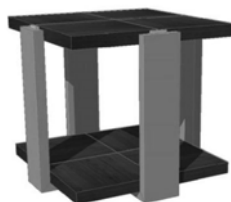
53 1/2"

14 1/2"

33 7/8"

**SLIDIN-813**

Oak Top & Base w/ HG Lacquer Legs



**SLIDING End Table**

23 5/8"

20 1/4"

23 5/8"

**SLIDIN-814**

Oak Top & Base w/ HG Lacquer Legs