

SWEET TEMPER COLLECTION

BY ALEAL



PLANUM[®]
FURNITURE

Swedesford Corporate Center
619 B Swedesford Road
Frazer, PA 19355

Email: info@planumfurniture.com
Website: planumfurniture.com

Tel : 610/251-2120
Tel : 800/343-0042
Fax : 610/251-2290

ALEAL Finishes

LACQUER FINISHES



LC01 BLACK



LC02 WHITE



LC07 BRICK RED



LC11 TOMATO RED



LC12 SLATE GRAY



LC13 IVORY



LC14 METALLIC
GRAY



LC15 GRAY BEIGE



LC16 FOG GRAY



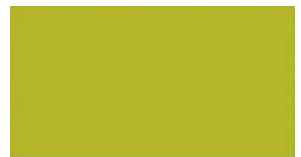
LC18 METALLIC
TAUPE



LC19 CAMOUFLAGE



LC20 GUN
METAL GRAY



LC21 MUSTARD
YELLOW



LC22 ASH GRAY



LC23 SILVER
GRAY



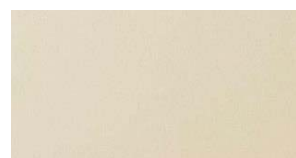
LC26 BURGANDY



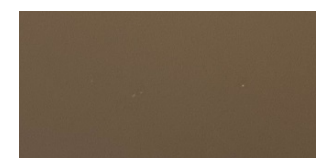
LC27 RUBY



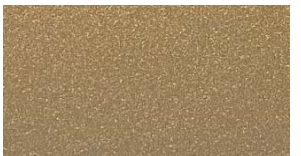
LC28 CAPPUCCINO



LC36 PEARL



LC37 PEWTER



LC38 PALOMINO



LC39 PETROL BLUE



BRONZE



SILVER



GOLD



CHAMPAGNE

PLEASE NOTE ABOVE LACQUERS ARE AVAILABLE IN THE BELOW SHEENS:

5% MATTE OR 30% SEMIGLOSS - USE MATTE PRICING

100% SHEEN - USE HIGH GLOSS PRICING

ALEAL Finishes

OAK & WALNUT FINISHES



BLACK OAK CV01



CHOCOLATE OAK
CV02



SLATE GRAY OAK
CV03



IVORY OAK CV12



METALLIC TAUPE
OAK CV11



METALLIC GRAY
OAK CV10



OPAL GRAY OAK
CVL15



GRAY BEIGE OAK
CV09



WHITE OAK CV04



CHERRY OAK CV05



NATURAL OAK CV06



STEEL GRAY OAK
CVL14



SMOOTH CHOCOLATE
OAK CVL16



CVL19



RUSTIC OAK CVL17



WILD OAK CV06



WALNUT NG01

PLEASE NOTE ABOVE WOODS ARE AVAILABLE IN THE BELOW SHEENS:

5% MATTE OR 30% SEMIGLOSS - USE MATTE PRICING

*THEY ARE NOT AVAILABLE IN 100% SHEEN HIGH GLOSS**

ALEAL Finishes

EBONY



RECONSTITUTED
EBONY



NATURAL EBONY

ROSEWOOD



RECONSTITUTED
ROSEWOOD

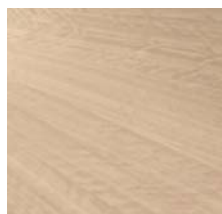


NATURAL
ROSEWOOD

EUCALYPTUS FRISE

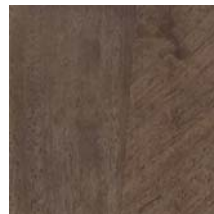


GREY EUCALYPTUS



POLAR EUCALYPTUS

PLAIN STAINED EUCALYPTUS



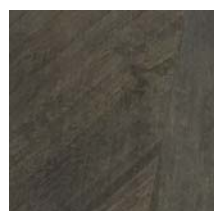
SOFT PLUM



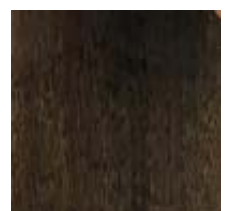
ARGENTO



ESPRESSO EUCALYPTUS



SOFT GREY



TOFFEE

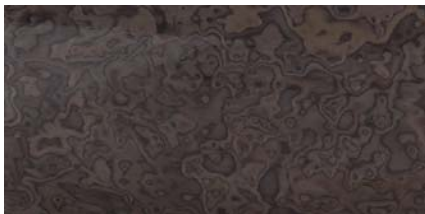
TULP WOOD



OAK FUME



ASH BURL



BURGANDY



LIGHT GRAY

PLEASE NOTE ABOVE WOODS ARE AVAILABLE IN THE BELOW SHEENS:

5% MATTE OR 30% SEMIGLOSS - USE MATTE PRICING

100% SHEEN - USE HIGH GLOSS PRICING

TABLE OF CONTENTS

	<u>PAGE #</u>
ANNE BEDROOM	7
BOURBON BEDROOM	11
CLUB BEDROOM	15
COUTURE BEDROOM	17
GATSBY BEDROOM	28
HARMONY BEDROOM	32
JULIANA BEDROOM	36
KENZO BEDROOM	41
MADISON BEDROOM	48

DINING TABLE

Description		Dimesions in Inches		
Item No.	Finish	W	H	D



2 vol. / 0.800 m3 / 120 Kg

SWEET TEMPER Rect. Extension Dining Table

78 3/4" 30" 39 3/8"
2x 19 5/8" Extensions

FINISH OPTIONS

TEMP-100/1	Oak or Walnut (5%)
TEMP-100/2	Natural Ebony
TEMP-100/3	Reconstituted Ebony, Oak Fume or Reconstituted Rosewood
TEMP-100/4	Eucalyptus Frise or Natural Rosewood
TEMP-100/5	Tulipwood
TEMP-100/6	Eucalyptus Stain
TEMP-100/7	All Lacquer

MEDIA CABINET



1 vol. / 0.503 m3 / 79 Kg

SWEET TEMPER A TV Unit - Wall Mounted

2x Drop-lids, 2x Drawers
Cable management on top

98 1/2" 13 3/8" 16 1/2"

TEMP-101	All Lacquer
----------	-------------



1 vol. / 0.366 m3 / 64 Kg

SWEET TEMPER C TV Unit - Wall Mounted

1x Drop-lid, 2x Drawers
Cable management on top

70 7/8" 13 3/8" 16 1/2"

TEMP-102	All Lacquer
----------	-------------



2 vol. / 0.746 m3 / 95 Kg

SWEET TEMPER D TV Unit - With Feet

1x Drop-lids, 4x Drawers
Cable management on top
Painted Iron Feet - Optional Lacquer Color

86 5/8" 27 1/2" 16 1/2"

TEMP-103	All Lacquer
----------	-------------



2 vol. / 0.677 m3 / 81 Kg

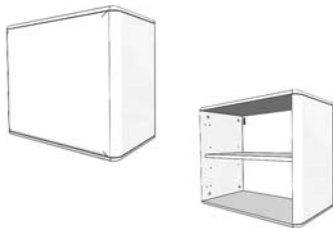
SWEET TEMPER B TV Unit - With Feet

1x Drop-lids, 4x Drawers
Cable management on top
Painted Iron Feet - Optional Lacquer Color

78 3/4" 27 1/2" 16 1/2"

TEMP-104	All Lacquer
----------	-------------

WALL MODULE



1 vol. / 0.191 m3 / 25 Kg

SWEET TEMPER Cube Wall Module

1x Door w/ Interior Shelf

23 5/8" 23 1/4" 15"

TEMP-105	All Lacquer
----------	-------------

WALL MODULE	Description		Dimensions in Inches		
	Item No.	Finish	W	H	D



1 vol. / 0.123 m3 / 30 Kg

SWEET TEMPER C Wall Module

1x Drop-lid

27 1/2"

23 1/4"

16 1/2"

TEMP-106	All Lacquer
-----------------	-------------



1 vol. / 0.218 m3 / 40 Kg

SWEET TEMPER Wall Module

1x Drop-lid

49 1/4"

15"

15"

TEMP-107	All Lacquer
-----------------	-------------



1 vol. / 0.405 m3 / 65 Kg

SWEET TEMPER Wall Module

2x Drop-lids

78 3/4"

15"

15"

TEMP-108	All Lacquer
-----------------	-------------



1 vol. / 0.052 m3 / 7 Kg

SWEET TEMPER Open Cube Wall Module - Vertical

Back Panel in Lacquer

11"

15 3/8"

12 5/8"

FINISH OPTIONS

TEMP-109/1	Oak or Walnut (5%)
TEMP-109/2	Natural Ebony
TEMP-109/3	Reconstituted Ebony, Oak Fume or Reconstituted Rosewood
TEMP-109/4	Eucalyptus Frise or Natural Rosewood
TEMP-109/5	Tulip Wood
TEMP-109/6	Eucalyptus Stain
TEMP-109/7	Lacquer

UPCHARGE	LED Lighting
-----------------	--------------



1 vol. / 0.098 m3 / 13 Kg

SWEET TEMPER Open Shelf Wall Module - Vertical

Back Panel in Lacquer

11"

27 1/2"

12 5/8"

FINISH OPTIONS

TEMP-110/1	Oak or Walnut (5%)
TEMP-110/2	Natural Ebony
TEMP-110/3	Reconstituted Ebony, Oak Fume or Reconstituted Rosewood
TEMP-110/4	Eucalyptus Frise or Natural Rosewood
TEMP-110/5	Tulip Wood
TEMP-110/6	Eucalyptus Stain
TEMP-110/7	Lacquer

UPCHARGE	LED Lighting
-----------------	--------------

WALL MODULE	Description		Dimesions in Inches		
	Item No.	Finish	W	H	D

SWEET TEMPER Open Shelf Wall Module - Horizontal

30" 11" 12 5/8"



1 vol. / 0.098 m3 / 13 Kg

FINISH OPTIONS		
TEMP-111/1	Oak or Walnut (5%)	
TEMP-111/2	Natural Ebony	
TEMP-111/3	Reconstituted Ebony, Oak Fume or Reconstituted Rosewood	
TEMP-111/4	Eucalyptus Frise or Natural Rosewood	
TEMP-111/5	Tulip Wood	
TEMP-111/6	Eucalyptus Stain	
TEMP-111/7	Lacquer	

UPCHARGE	LED Lighting
-----------------	--------------

SWEET TEMPER Wall Module - Vertical

1x Interior Shelf

11" 30" 13 3/8"



1 vol. / 0.104 m3 / 16 Kg

FINISH OPTIONS		
TEMP-112/1	Oak or Walnut (5%)	
TEMP-112/2	Natural Ebony	
TEMP-112/3	Reconstituted Ebony, Oak Fume or Reconstituted Rosewood	
TEMP-112/4	Eucalyptus Frise or Natural Rosewood	
TEMP-112/5	Tulip Wood	
TEMP-112/6	Eucalyptus Stain	
TEMP-112/7	Lacquer	

SWEET TEMPER Wall Module - Vertical

2x Interior Shelves

11" 43 3/8" 13 3/8"



1 vol. / 0.146 m3 / 22 Kg

FINISH OPTIONS		
TEMP-113/1	Oak or Walnut (5%)	
TEMP-113/2	Natural Ebony	
TEMP-113/3	Reconstituted Ebony, Oak Fume or Reconstituted Rosewood	
TEMP-113/4	Eucalyptus Frise or Natural Rosewood	
TEMP-113/5	Tulip Wood	
TEMP-113/6	Eucalyptus Stain	
TEMP-113/7	Lacquer	

SWEET TEMPER Wall Panel

1x Glass Shelf

31 1/2" 10 5/8" 7 7/8"



2 vol. / 0.054 m3 / 21 Kg

FINISH OPTIONS		
TEMP-114/1	Oak or Walnut (5%)	
TEMP-114/2	Natural Ebony	
TEMP-114/3	Reconstituted Ebony, Oak Fume or Reconstituted Rosewood	
TEMP-114/4	Eucalyptus Frise or Natural Rosewood	
TEMP-114/5	Tulip Wood	
TEMP-114/6	Eucalyptus Stain	
TEMP-114/7	Lacquer	

UPCHARGE	LED Lighting
-----------------	--------------

PREDESIGNED CONFIGURATION

Description		Dimesions in Inches		
Item No.	Finish	W	H	D

SWEET TEMPER A Composition
 1x TEMP-101 ('A' TV Unit - Wall Mounted)
 1x TEMP-105 (Cube Wall Module)
 1x TEMP-110 (Open Shelf Wall Module - Vertical)
 1x TEMP-111 (Open Shelf Wall Module - Horizontal)

108 5/8" 54 3/8" 16 1/2"



4 vol. / 0.890 m3 / 130 Kg

FINISH OPTIONS	
TEMP-115/1	Oak or Walnut (5%)
TEMP-115/2	Natural Ebony
TEMP-115/3	Reconstituted Ebony, Oak Fume or Reconstituted Rosewood
TEMP-115/4	Eucalyptus Frise or Natural Rosewood
TEMP-115/5	Tulip Wood
TEMP-115/6	Eucalyptus Stain
TEMP-115/7	Lacquer

UPCHARGE	LED Lighting
-----------------	--------------

SWEET TEMPER A1 Composition
 1x TEMP-101 ('A' TV Unit - Wall Mounted)
 1x TEMP-105 (Cube Wall Module)

107 7/8" 43 3/8" 16 1/2"



2 vol. / 0.694 m3 / 104 Kg

TEMP-116	All Lacquer
----------	-------------

SWEET TEMPER B Composition
 1x TEMP-104 ('B' TV Unit - With Feet)
 1x TEMP-107 (Wall Module)
 2x TEMP-109 (Open Cube Wall Module- Vertical)
 2x TEMP-110 (Open Shelf Wall Module - Vertical)

116 1/8" 83" 16 1/2"



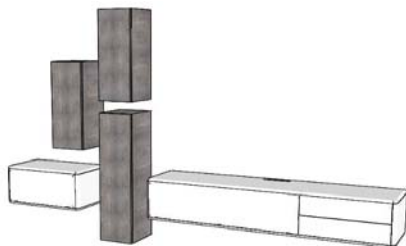
4 vol. / 0.925 m3 / 114 Kg

FINISH OPTIONS	
TEMP-117/1	Oak or Walnut (5%)
TEMP-117/2	Natural Ebony
TEMP-117/3	Reconstituted Ebony, Oak Fume or Reconstituted Rosewood
TEMP-117/4	Eucalyptus Frise or Natural Rosewood
TEMP-117/5	Tulip Wood
TEMP-117/6	Eucalyptus Stain
TEMP-117/7	Lacquer

UPCHARGE	LED Lighting
-----------------	--------------

SWEET TEMPER C Composition
 1x TEMP-102 ('C' TV Unit - Wall Mounted)
 1x TEMP-106 ('C' Wall Module)
 2x TEMP-112 (Wall Module- Vertical)
 1x TEMP-113 (Wall Module - Vertical)

122" 77 1/8" 16 1/2"



4 vol. / 0.739 m3 / 132 Kg

FINISH OPTIONS	
TEMP-118/1	Oak or Walnut (5%)
TEMP-118/2	Natural Ebony
TEMP-118/3	Reconstituted Ebony, Oak Fume or Reconstituted Rosewood
TEMP-118/4	Eucalyptus Frise or Natural Rosewood
TEMP-118/5	Tulip Wood
TEMP-118/6	Eucalyptus Stain
TEMP-118/7	Lacquer

PREDESIGNED CONFIGURATION

Description		Dimesions in Inches		
Item No.	Finish	W	H	D

SWEET TEMPER D Composition
 1x TEMP-103 ('D' TV Unit - With Feet)
 1x TEMP-108 (Wall Module)
 2x TEMP-114 (Wall Panel)

125" 70 7/8" 16 1/2"



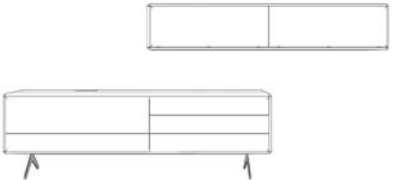
7 vol. / 1.259 m3 / 202 Kg

FINISH OPTIONS	
TEMP-119/1	Oak or Walnut (5%)
TEMP-119/2	Natural Ebony
TEMP-119/3	Reconstituted Ebony, Oak Fume or Reconstituted Rosewood
TEMP-119/4	Eucalyptus Frise or Natural Rosewood
TEMP-119/5	Tulip Wood
TEMP-119/6	Eucalyptus Stain
TEMP-119/7	Lacquer

UPCHARGE	LED Lighting
-----------------	--------------

SWEET TEMPER D1 Composition
 1x TEMP-103 ('D' TV Unit - With Feet)
 1x TEMP-108 (Wall Module)

125" 56 3/4" 16 1/2"

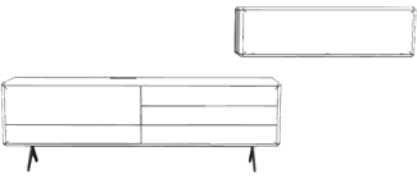


3 vol. / 1.151 m3 / 160 Kg

TEMP-116	All Lacquer
----------	-------------

SWEET TEMPER D2 Composition
 1x TEMP-103 ('D' TV Unit - With Feet)
 1x TEMP-107 (Wall Module)

124" 56 3/4" 16 1/2"



3 vol. / 0.964 m3 / 135 Kg

TEMP-116	All Lacquer
----------	-------------