



Please also note our general details and sales information

Edition 29.08.2024

Errors and amendments excepted. Our General Terms and Conditions are effective. / WEEE-Reg.-No. DE 69718127

TABLE TOP VERSION

Table top in the versions:

- **wood veneer** (code „1“)



- **solid wood** (code „2“)

- **ceramic** (code „4“)



- **HPL** (code „6“)



Depending on the chosen table top the stated total height can vary up to 15 mm.

BASE FRAME

Solid wooden base frame with version „1“ and „2“ on the lines of the table top.

With version „4“ and „6“ base frame optionally available in:

- beech
- wild oak natural
- wild oak bianco
- wild walnut

TABLE TOP

WOOD VENEER

Only the high-quality trunks and therefore the smallest part of the total felling can be used for the furniture construction. That applies to the use of the trunk for veneer production, too. The choice of wood is done selectively according to the requests typical for furniture.

In contrast to solid wood veneered surfaces are less sensitive to variabilities of temperature and dampness. Veneered surfaces are protected. This makes the care especially easy and exerts the beauty of the material.

The veneered table top and the cross bar are optionally available in:

- **Beech (UV laminated oil effect):** With older trees a reddening of the wood inside the trunk arises as a natural corollary, named core. This core is characterized by a beautiful, bright colouring and unique growth marks.



- **Wild oak natural and wild oak bianco (UV laminated oil effect):** Visual characteristics of wild oak are increased arising branches, small cracks, whirls or face sides. The agility of the wood is also formed by the natural play of colours.

from the left to the right:



- **Wild walnut (UV laminated oil effect):** With wild walnut the wide colour spectrum is varying from grey-brown to red-brown painting to the point of nearly black inlets. Also a share of light sap wood is possible. Limb and growth marks as well as different intense wood structures are characterizing the nativeness of the walnut.





Please also note our general details and sales information

Edition 29.08.2024

Errors and amendments excepted. Our General Terms and Conditions are effective.

SOLID WOOD

Only the high-quality trunks and therefore the smallest part of the total felling can be used for the furniture construction. That applies to the use of the trunk for solid wood production, too. The choice of wood is done selectively according to the requests typical for furniture.

Wood is an agile material and reacts to the room climate, i.e. it absorbs dampness of the air and dispenses it again. As a basic principle wood has the characteristic to act naturally (to expand/decrease). The technical processing shows natural characteristics; dimensional tolerances are possible. These characteristics constitute no grounds of complaint.

The solid table top as well as the wooden holder at the frame is optionally available in:

- **Beech (UV laminated oil effect):** With older trees a reddening of the wood inside the trunk arises as a natural corollary, named core. This core is characterized by a beautiful, bright colouring and unique growth marks.



- **Wild oak natural and wild oak bianco (UV laminated oil effect):** Visual characteristics of wild oak are increased arising branches, small cracks, whirls or face sides. The agility of the wood is also formed by the natural play of colours.

from the left to the right:



- **Wild walnut (UV laminated oil effect):** With wild walnut the wide colour spectrum is varying from grey-brown to red-brown painting to the point of nearly black inlets. Also a share of light sap wood is possible. Limb and growth marks as well as different intense wood structures are characterizing the nativeness of the walnut.



CERAMIC

The main component of the ceramic top is the basic material clay that is fired together with different mineral raw materials.

Ceramic offers a lot of advantages for the intensive use. Its surface is hygienic and also easy to care and to clean. The table top does not only look elegant it's also resistant, resilient and light resistant.

The ceramic table top is optionally available in:

- **anthracite**



- **cement optics**



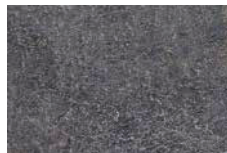
HPL

The code HPL (High Pressure Laminate) is standing for flat laminates that are grouted in a special high-pressure method. HPL boards consist mainly of paper that is drenched in special resins. As completion melamine resin makes for a robust and beautiful surface.

The HPL board does not only look elegant it's also resistant, easy-care and light resistant.

The HPL table top is optionally available in:

- **anthracite**



- **cement optics**





Please also note our general details and sales information

Edition 29.08.2024

Errors and amendments excepted. Our General Terms and Conditions are effective.

CARE INSTRUCTIONS

Never use abrasives, polishes or cleaning agents for care respectively for cleaning. Also do not apply acid or base containing chemicals. Just wipe off damply with a soft clean cloth and dry afterwards.

ORDER CHECK LIST

Please pay attention to the following issues respectively to complete specifications when ordering:

- **article / table size**
- **finish of table top** (with version „1“ and „2“ the solid wooden base frame will be delivered on the lines of the table top)
- **finish of base frame** with version „4“ and „6“



Errors and amendments excepted. Our General Terms and Conditions are effective.

I RECTANGULAR VENEER

		Table fixed veneer	Table fixed veneer	Table fixed veneer
H		1F 	1E 	1D
	76			
W	D	90	90	90
		180	160	140

I RECTANGULAR SOLID

		Table fixed solid	Table fixed solid	Table fixed solid
H		2F 	2E 	2D
	76			
W	D	90	90	90
		180	160	140

Beech**Wild oak natural****Wild oak bianco****Wild walnut**

