

TOPAZE II COLLECTION

BY ALEAL



PLANUM[®]
FURNITURE

Swedesford Corporate Center
619 B Swedesford Road
Frazer, PA 19355

Email: info@planumfurniture.com
Website: planumfurniture.com

Tel : 610/251-2120
Tel : 800/343-0042
Fax : 610/251-2290

ALEAL Finishes

LACQUER FINISHES



LC01 BLACK



LC02 WHITE



LC07 BRICK RED



LC11 TOMATO RED



LC12 SLATE GRAY



LC13 IVORY



LC14 METALLIC
GRAY



LC15 GRAY BEIGE



LC16 FOG GRAY



LC18 METALLIC
TAUPE



LC19 CAMOUFLAGE



LC20 GUN
METAL GRAY



LC21 MUSTARD
YELLOW



LC22 ASH GRAY



LC23 SILVER
GRAY



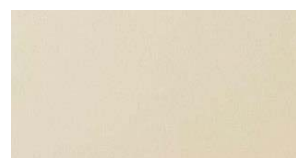
LC26 BURGANDY



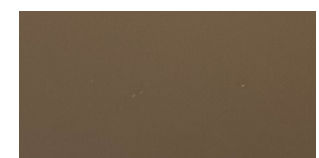
LC27 RUBY



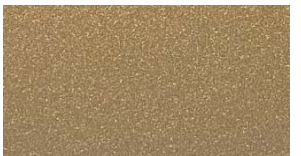
LC28 CAPPUCCINO



LC36 PEARL



LC37 PEWTER



LC38 PALOMINO



LC39 PETROL BLUE



BRONZE



SILVER



GOLD



CHAMPAGNE

PLEASE NOTE ABOVE LACQUERS ARE AVAILABLE IN THE BELOW SHEENS:

5% MATTE OR 30% SEMIGLOSS - USE MATTE PRICING

100% SHEEN - USE HIGH GLOSS PRICING

ALEAL Finishes

OAK & WALNUT FINISHES



BLACK OAK CV01



CHOCOLATE OAK
CV02



SLATE GRAY OAK
CV03



IVORY OAK CV12



METALLIC TAUPE
OAK CV11



METALLIC GRAY
OAK CV10



OPAL GRAY OAK
CVL15



GRAY BEIGE OAK
CV09



WHITE OAK CV04



CHERRY OAK CV05



NATURAL OAK CV06



STEEL GRAY OAK
CVL14



SMOOTH CHOCOLATE
OAK CVL16



CVL19



RUSTIC OAK CVL17



WILD OAK CV06



WALNUT NG01

PLEASE NOTE ABOVE WOODS ARE AVAILABLE IN THE BELOW SHEENS:

5% MATTE OR 30% SEMIGLOSS - USE MATTE PRICING

*THEY ARE NOT AVAILABLE IN 100% SHEEN HIGH GLOSS**

ALEAL Finishes

EBONY



RECONSTITUTED
EBONY

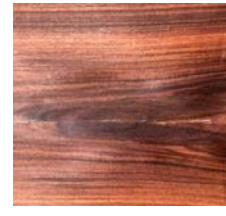


NATURAL EBONY

ROSEWOOD



RECONSTITUTED
ROSEWOOD

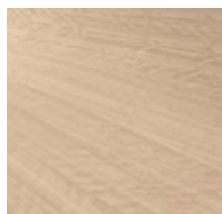


NATURAL
ROSEWOOD

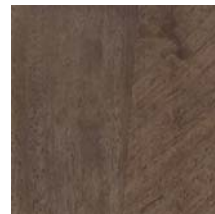
EUCALYPTUS FRISE



GREY EUCALYPTUS



POLAR EUCALYPTUS



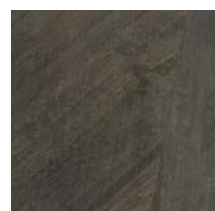
SOFT PLUM



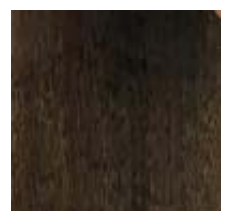
ARGENTO



ESPRESSO EUCALYPTUS



SOFT GREY



TOFFEE

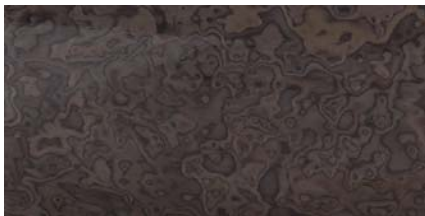
TULIP WOOD



OAK FUME



ASH BURL



BURGANDY



LIGHT GRAY

PLEASE NOTE ABOVE WOODS ARE AVAILABLE IN THE BELOW SHEENS:

5% MATTE OR 30% SEMIGLOSS - USE MATTE PRICING

100% SHEEN - USE HIGH GLOSS PRICING

ALEAL Finishes

STAINLESS STEEL



**POLISHED STAINLESS
STEEL**



**BRUSHED STAINLESS
STEEL**

TABLE OF CONTENTS

	<u>PAGE #</u>
SIDEBOARD	7
VITRINE	7
BAR	8
MEDIA	8
OCCASIONAL	9

SIDEBOARD

Description		Dimensions in Inches		
Item No.	Finish	W	H	D

TOPAZE II Sideboard (Big Version)

4x Doors, 1x Interior Drawer & 3x Wooden Shelves
 Lacquer Top, Structure & Left Doors
 Polished Stainless Steel Base

86 5/8" 35 1/2" 21"



3 vol. / 1.239 m3 / 129 Kg

FINISH OPTIONS	
TOPA-2001/1	Eucalyptus Frise, Ash Burl or Natural Rosewood
TOPA-2001/2	Tulip Wood
TOPA-2001/3	Reconstituted Ebony, Oak Fume or Reconstituted Rosewood
TOPA-2001/4	Natural Ebony
TOPA-2001/5	Eucalyptus Stain
TOPA-2001/6	Oak or Walnut (5% or 30% Sheen)

UPCHARGE	Cutlery Insert
-----------------	----------------

TOPAZE II Sideboard (Small Version)

4x Doors, 1x Interior Drawer & 3x Wooden Shelves
 Lacquer Top, Structure & Left Doors
 Polished Stainless Steel Base

70 7/8" 35 1/2" 21"



3 vol. / 1.025 m3 / 117 Kg

FINISH OPTIONS	
TOPA-2013/1	Eucalyptus Frise, Ash Burl or Natural Rosewood
TOPA-2013/2	Tulip Wood
TOPA-2013/3	Reconstituted Ebony, Oak Fume or Reconstituted Rosewood
TOPA-2013/4	Natural Ebony
TOPA-2013/5	Eucalyptus Stain
TOPA-2013/6	Oak or Walnut (5% or 30% Sheen)

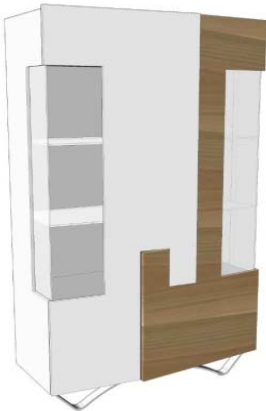
UPCHARGE	Cutlery Insert
-----------------	----------------

VITRINE

TOPAZE II Vitrine

2x Doors & 4x Interior Shelves
 Mirrored Back
 Lacquer Top, Structure & Left Door
 Polished Stainless Steel Base

47 1/4" 78" 21"



3 vol. / 1.440 m3 / 183 Kg

FINISH OPTIONS	
TOPA-2014/1	Eucalyptus Frise, Ash Burl or Natural Rosewood
TOPA-2014/2	Tulip Wood
TOPA-2014/3	Reconstituted Ebony, Oak Fume or Reconstituted Rosewood
TOPA-2014/4	Natural Ebony
TOPA-2014/5	Eucalyptus Stain
TOPA-2014/6	Oak or Walnut (5% or 30% Sheen)

UPCHARGE	2x LED Projector
-----------------	------------------

*** RECOMMENDED THAT UNIT BE ATTACHED TO WALL***

BAR	Description		Dimensions in Inches		
	Item No.	Finish	W	H	D



3 vol. / 1.079 m3 / 157 Kg

TOPAZE II Bar
 2x Doors & 1x Interior Drawer
 Mirrored Back
 Lacquer Top, Structure & Left Door
 Polished Stainless Steel Base

47 1/4" 60 5/8" 21"

FINISH OPTIONS	
TOPA-2003/1	Eucalyptus Frise, Ash Burl or Natural Rosewood
TOPA-2003/2	Tulip Wood
TOPA-2003/3	Reconstituted Ebony, Oak Fume or Reconstituted Rosewood
TOPA-2003/4	Natural Ebony
TOPA-2003/5	Eucalyptus Stain
TOPA-2003/6	Oak or Walnut (5% or 30% Sheen)

UPCHARGE	LED Projector
UPCHARGE	Glass Rack

*** RECOMMENDED THAT UNIT BE ATTACHED TO WALL***

MEDIA



2 vol. / 0.671 m3 / 103 Kg

TOPAZE II Media Cabinet (Big Version)
 4x Doors, 1x Interior Drawer & 2x Wooden Shelves
 Lacquer Top, Structure & Left Doors
 Polished Stainless Steel Base

78 3/4" 22" 21"

FINISH OPTIONS	
TOPA-2002/1	Eucalyptus Frise, Ash Burl or Natural Rosewood
TOPA-2002/2	Tulip Wood
TOPA-2002/3	Reconstituted Ebony, Oak Fume or Reconstituted Rosewood
TOPA-2002/4	Natural Ebony
TOPA-2002/5	Eucalyptus Stain
TOPA-2002/6	Oak or Walnut (5% or 30% Sheen)

TOPAZE II Media Cabinet (Small Version)
 4x Doors, 1x Interior Drawer & 2x Wooden Shelves
 Lacquer Top, Structure & Left Doors
 Polished Stainless Steel Base

63" 22" 21"



2 vol. / 0.546 m3 / 93 Kg

FINISH OPTIONS	
TOPA-2015/1	Eucalyptus Frise, Ash Burl or Natural Rosewood
TOPA-2015/2	Tulip Wood
TOPA-2015/3	Reconstituted Ebony, Oak Fume or Reconstituted Rosewood
TOPA-2015/4	Natural Ebony
TOPA-2015/5	Eucalyptus Stain
TOPA-2015/6	Oak or Walnut (5% or 30% Sheen)

OCCASIONAL	Description		Dimesions in Inches		
	Item No.	Finish	W	H	D



1 vol./ 0,048 m3 / 40 Kg

TOPAZ II Rectangular Mirror				
Polished Stainless Steel Detail				
		70 7/8"	35 1/2"	1 1/4"

FINISH OPTIONS	
TOPA-2000/1	Eucalyptus Frise, Ash Burl or Natural Rosewood
TOPA-2000/2	Tulip Wood
TOPA-2000/2	Reconstituted Ebony, Oak Fume or Reconstituted Rosewood
TOPA-2000/3	Natural Ebony
TOPA-2000/4	Eucalyptus Stain or Lacquer
TOPA-2000/5	Oak or Walnut (5% or 30% Sheen)
TOPA-2000/6	Lacquer

*****IT IS THE RESPONSIBILITY OF THE CUSTOMER TO ENSURE THAT THE CORRECT HARDWARE IS USED WHEN HANGING MIRRORS; MANUFACTURER CANNOT SUPPLY HARDWARE FOR EVERY TYPE OF SITUATION.*****