

VALENTINO COLLECTION

by ALEAL



PLANUM[®]
FURNITURE

Planum, Inc
Swedesford Corporate Center
619 B Swedesford Road
Frazer, PA 19355

Tel : 610/251-2120
Tel : 800/343-0042
Fax : 610/251-2290

email info@planumfurniture.com
visit us planumfurniture.com

ALEAL Finishes

LACQUER FINISHES



LC01 BLACK



LC02 WHITE



LC07 BRICK RED



LC11 TOMATO RED



LC12 SLATE GRAY



LC13 IVORY



LC14 METALLIC GRAY



LC15 GRAY BEIGE



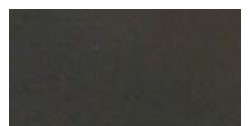
LC16 FOG GRAY



LC18 METALLIC TAUPE



LC19 CAMOUFLAGE



LC20 GUN METAL GRAY



LC21 MUSTARD YELLOW



LC22 ASH GRAY



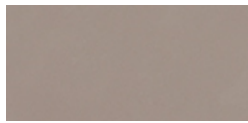
LC23 SILVER GRAY



LC26 BURGANDY



LC27 RUBY



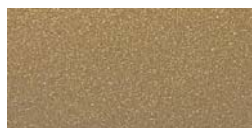
LC28 CAPPUCCINO



LC36 PEARL



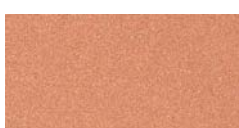
LC37 PEWTER



LC38 PALOMINO



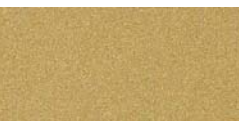
CHAMPAGNE



BRONZE



SILVER



GOLD

***CABINET INTERIORS ARE ALWAYS IN THE SAME LACQUER COLOR AS THE EXTERIOR - INTERIOR ALWAYS IN MATTE SHEEN ** OTHER COLOR OPTIONS AVAILABLE UPON REQUEST

Please Note:

- 1.) Custom RAL colors are acceptable, please add 10% upcharge (or minimum charge of \$260)
- 2.) Custom RAL colors need 60-120 day order delay.
- 3.) Is it the customers responsibility to send the sample of the desired color to Planum.
- 4.) Lastly all orders with custom colors will not be accepted as a return.

ALEAL Finishes

OAK & WALNUT FINISHES (Always 5% Sheen - Matte)



CV01 Black Oak



CV09 Gray Beige Oak



CV02 Chocolate Oak



CV12 Ivory Oak



CV03 Slate Gray Oak



CV04 White Oak



CV11 Metallic Taupe Oak



CV05 Cherry Oak



CV10 Metallic Gray Oak



CV06 Natural Oak



CVL15 Opal Gray Oak



CVL14 Steel Gray Oak



CVL16 Smooth Chocolate Oak



Wild Oak



CVL17 Rustic Oak



NG01 Walnut

Please Note: Any OAK finish can be replaced with WALNUT with a 10% upcharge

ALEAL Finishes

CERAMIC FINISHES



ARENA



ARTIC WHITE



AVORIO



BARRO



BASALT BEIGE



BASALT BLACK



BELGIAN BLUE



BASALT GREY



CEMENT



IRON COPPER



IRON CORTEN



IRON GREY



IRON MOSS



LAVA



PERLA

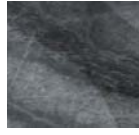
CERAMIC FINISHES (MARBLE IMITATIONS w/ GLOSS FINISH)



SILK GRISS



CARRARA
POLIDO



MEDUSA



ESTUARIO
POLIDO



CALCATA



SILK GRIS
NATURAL



ONICE BEJE (MATTE FINISH)

***Please Note: The above ceramic finishes cannot be applied to Extension tables -- they are too thick (5.6 MM)**

CERAMIC FINISHES (MARBLE IMITATIONS w/ MATTE FINISH)



THUNDER
LIGHT



CALCATA MIX



ESTATUARIO



CARRARA
NATURAL



TEMPO



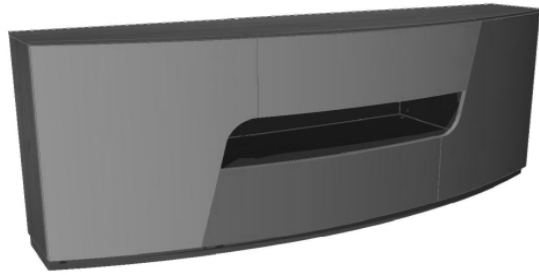
SUPREME
NATURAL

Please Note: Ceramic finishes can only be applied to certain pieces -- check price list

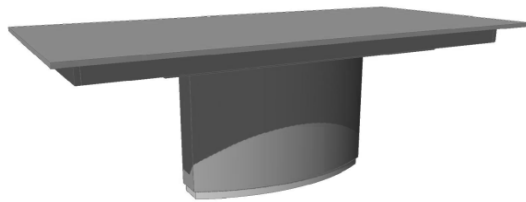
TABLE OF CONTENTS

	<u>PAGE #</u>
DINING ROOM	6
VITRINE / BAR UNITS	6-7
MEDIA CABINETS	7
CONSOLE	8
OCCASIONAL	8

Dining



2 vol. / 1,249 m3 / 157 kg



3 vol. / 0,713 m3 / 199 Kg

Description		Dimensions in Inches		
Item No.	Finish	W	H	D
VALENTINO Sideboard w/ Optional Glass Colors		86 5/8"	35"	21 5/8"
VALEN-3000	Oak Structure & Interior w/ HG Lacquer Fronts			
UPCHARGE	LED Lights in Central Arrangement			
VALENTINO Rectangular Extension Dining Table w/ Pedestal w/ Extension 39 3/8"W w/ Optional Glass & Ceramic Top Colors		82 3/4"	30"	39 3/8"
VALEN-3009/1	HG Lacquer Pedestal/ Top Frame & Extension w/ Glass Top			
VALEN-3009/2	HG Lacquer Pedestal/ Top Frame & Extension w/ Ceramic Top			
VALEN-3009/3	All HG Lacquer			
VALEN-3009/4	HG Lacquer Pedestal & Top w/ Oak Extension			
VALEN-3009/5	HG Lacquer Pedestal & Top w/ Walnut Extension			

Vitrine



Left Side

Right Side

2 vol. / 0,621 m3 / 85 Kg

VALENTINO Vitrines w/ Mirrored Back w/ Tempered Glass Shelves		23 5/8"	74 7/8"	17 3/8"
VALEN-3011/L	Oak Structure & Interior w/ HG Lacquer Fronts			
VALEN-3011/R	Oak Structure & Interior w/ HG Lacquer Fronts			
UPCHARGE	LED Projector			

*** PRICES ARE FOR 1X VITRINE -- EITHER LEFT SIDE OR RIGHT SIDE ***

*** RECOMMENDED THAT UNIT BE ATTACHED TO WALL ***

Bar Unit



3 vol. / 1,155 m3 / 141 kg

Description		Dimensions in Inches		
Item No.	Finish	W	H	D
	VALENTINO Bar w/ Mirrored Back w/ Glass Shelves w/ LED Projector	55 1/8"	57"	17 3/4"
VALEN-3002	Oak Structure & Interior w/ HG Lacquer Fronts			

*** RECOMMENDED THAT UNIT BE ATTACHED TO WALL***

Media Cabinets



1 vol. / 0,044 m3 / 12 kg

	VALENTINO Shelf	47 1/4"	2 3/8"	13"
VALEN-3012	All Oak			

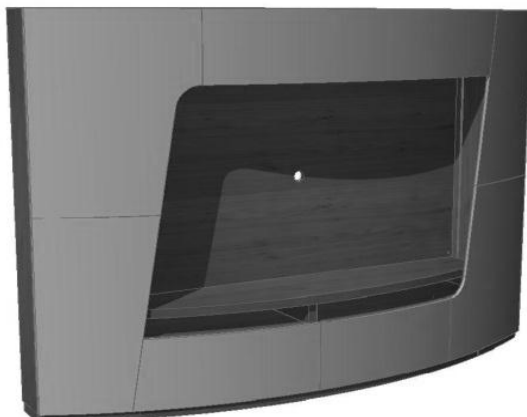
*** PRICE IS FOR 1X SHELF ONLY ***



1 vol. / 0,613 m3 / 102 kg

	VALENTINO TV Unit w/ Optional Glass Colors	78 3/4"	21 1/4"	18 7/8"
VALEN-3010	Oak Structure & Interior w/ HG Lacquer Fronts			
UPCHARGE	LED Lights in Central Arrangement			

*** Cable entry from cabinet Top & Back***



9 vol. / 2,429 m3 / 344 kg

	VALENTINO Wall Unit w/ Bar that includes Tempered Glass Shelf, LED Projector & Mirrored back	118 1/8"	80 3/4"	23 5/8"
VALEN-3004	Oak Structure & Interior w/ HG Lacquer Fronts			
UPCHARGE	LED Lights in Interior Sides			
UPCHARGE	Audio System (Radio w/ RDS + Bluetooth Receiver)			
UPCHARGE	Audio System (TV Connection + Bluetooth Receiver)			

TV Panel Dimensions: 68 3/4" W x 43 7/8" H

Console



1 vol. / 0,730m3 / 52 kg

Description Item No.	Finish	Dimensions in Inches		
		W	H	D
VALENTINA Console w/ Optional Glass Color		70 7/8"	32 1/4"	13 3/4"
VALEN-3008	Glass Top w/ Lacquer Drawers/ Pedestal/Base			

*** RECOMMENDED THAT UNIT BE ATTACHED TO WALL***

Occasional

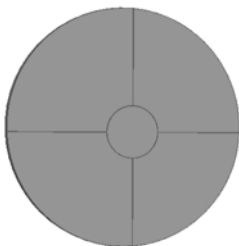


VALENTINO Nesting Tables		19 3/4"	21 5/8"	19 3/4"
VALEN-3006/1	HG Lacquer Top w/ Metal Legs -- BIG			
1 vol. / 0,133 m3 / 9 kg		19 3/4"	17 3/4"	19 3/4"
VALEN-3006/2	HG Lacquer Top w/ Metal Legs -- MEDIUM			
1 vol. / 0,112 m3 / 9 kg		19 3/4"	13 3/4"	19 3/4"



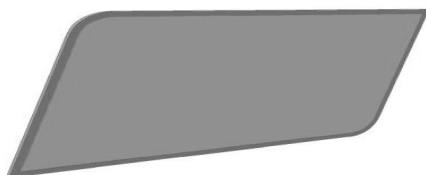
1 vol. / 0,515 m3 / 27 kg

VALEN-3006/3	HG Lacquer Top w/ Metal Legs -- SMALL			
1 vol. / 0,091 m3 / 9kg				
VALENTINO Coffee Table		43 3/8"	17 3/4"	43 3/8"
VALEN-3005	HG Lacquer Top w/ Metal Feet			



1 vol. / 0,026 m3 / 30 kg

VALENTINA Mirror		43 3/8"	43 3/8"	1"
VALEN-3007	Matte Lacquer Detail			



1 vol. / 0,088 m3 / 40 kg

VALENTINO Mirror		74 7/8"	35 1/2"	1 1/8"
VALEN-3001	HG Lacquer Frame			

PLEASE NOTE: It is the responsibility of the customer to ensure that the correct hardware is used when hanging the mirror/wall modules; manufacturer cannot supply hardware for every type of situation.